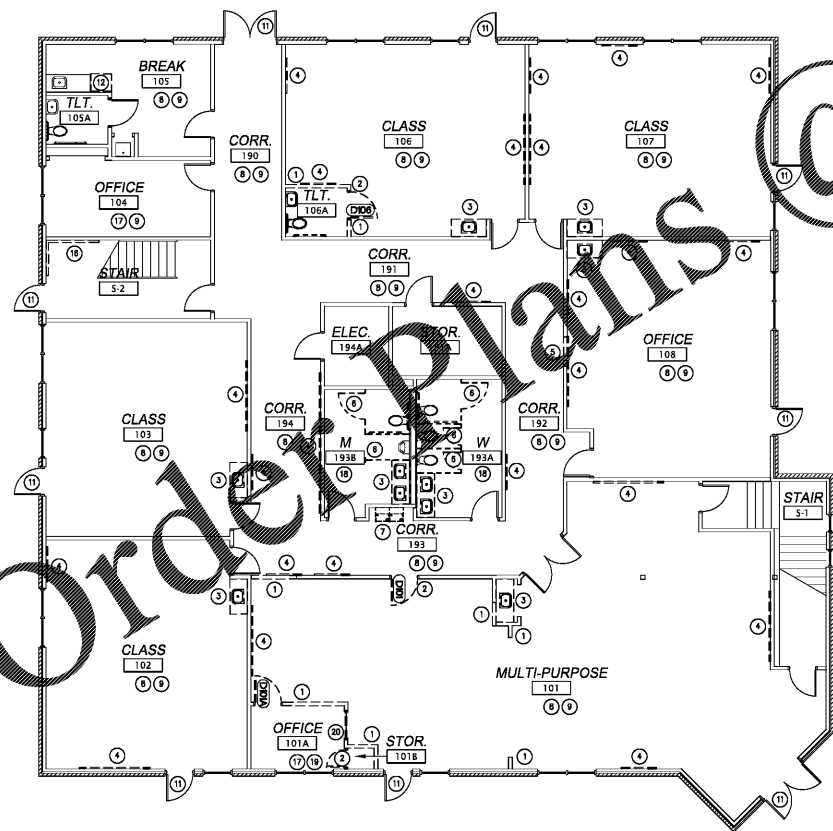


1 Lower Level Renovation Plan
A1.1 Scale: 1/8" = 1'-0"



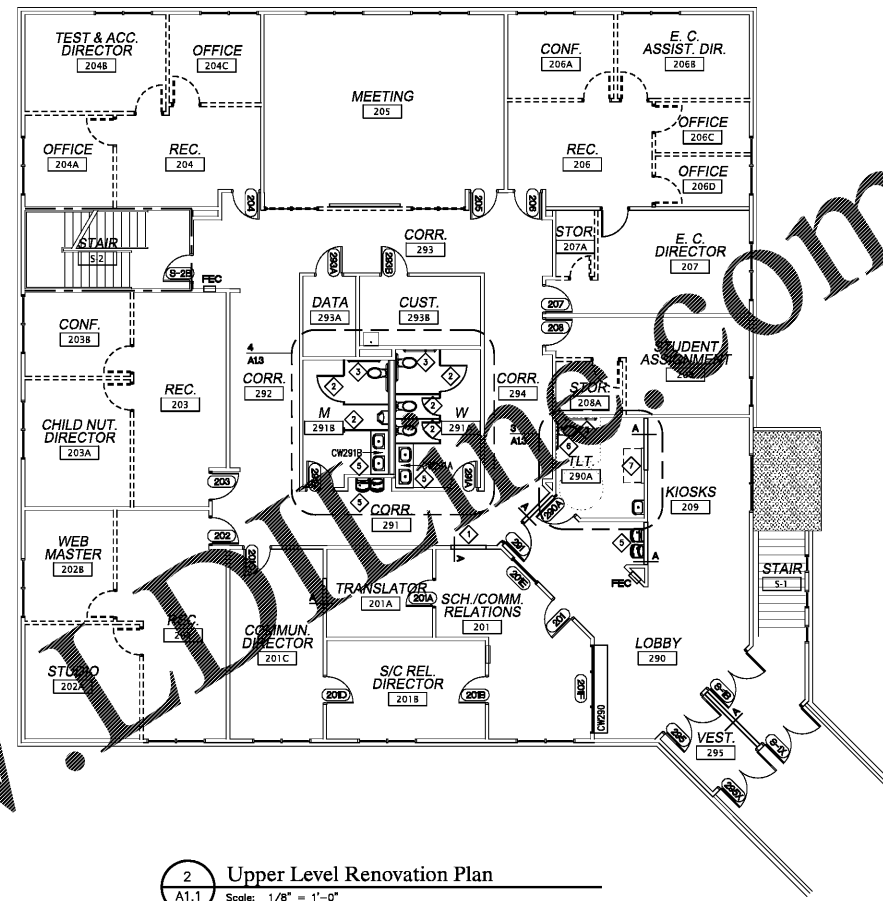
3 Lower Level Demolition Plan
A1.1 Scale: 1/8" = 1'-0"

RENOVATION LEGEND

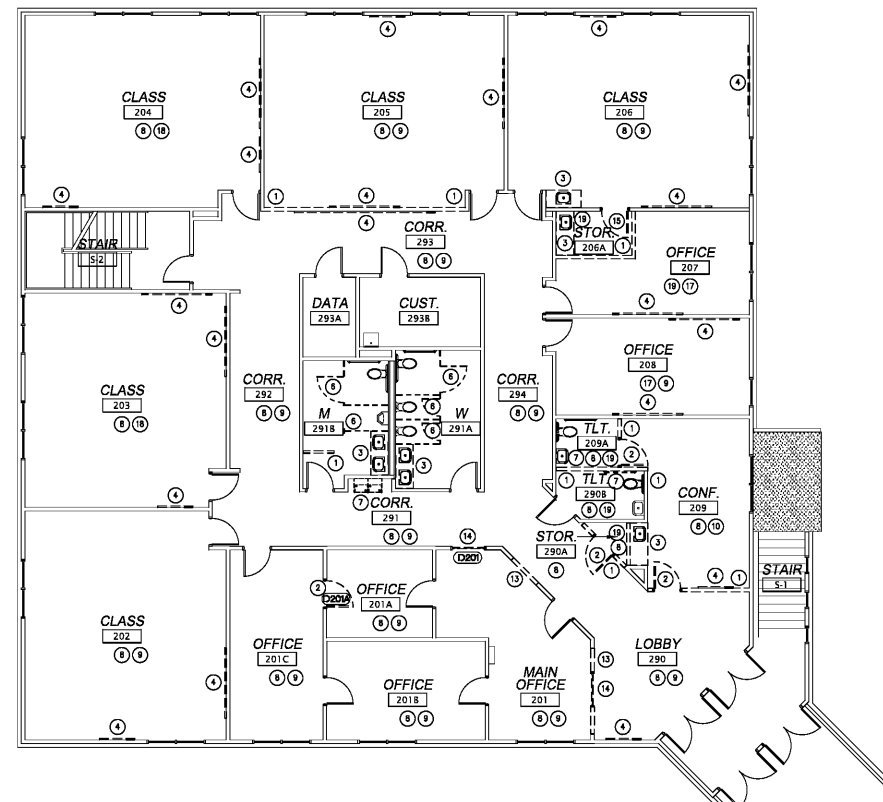
- ◆ INFILL EXISTING DOOR OR WINDOW OPENING WITH DRYWALL. PARTITION TO MATCH ADJACENT WALL: 2" x 4" WOOD STUDS @ 16" C WITH ONE (1) LAYER OF 1/2" TYPE 'X' GYPSUM WALLBOARD ON EACH SIDE OF FRAMING.
- ◇ PROVIDE AND INSTALL NEW TOILET PARTITIONS. LAYOUT AND DIMENSIONS WILL MATCH EXISTING CONDITIONS. PROVIDE WOOD BLOCKING AS REQUIRED.
- ◇ PROVIDE AND INSTALL 18" LONG VERTICAL GRAB BAR. SEE THE TOILET ACCESSORY MOUNTING HEIGHTS. PROVIDE WOOD BLOCKING AS REQUIRED.
- ◇ ALIGN FACE OF NEW PARTITION WITH THE ADJACENT EXISTING PARTITION.
- ◇ PROVIDE AND INSTALL NEW PLUMBING FIXTURES. COORDINATE WITH PLUMBING RENOVATION PLANS.
- ◇ PROVIDE AND INSTALL NEW 42" LONG GRAB BAR.
- ◇ PROVIDE AND INSTALL A NEW DAPER CHANGING STATION.

SYMBOL LEGEND

CLASSROOM 1	ROOM NAME AND NUMBER
122	DOOR AND FRAME NUMBER
100	PARTITION TAG
C	FIRE EXTINGUISHER CABINET
1	ENLARGED PLAN TAG
1	1 HOUR FIRE RATED WALL
---	EXISTING PARTITIONS
---	NEW PARTITIONS
---	DEMOUNTABLE PARTITIONS, N/C
---	OPERABLE PARTITION



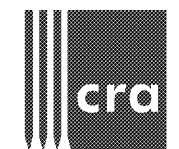
2 Upper Level Renovation Plan
A1.1 Scale: 1/8" = 1'-0"



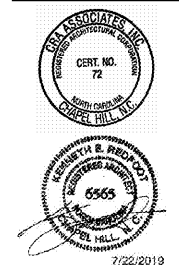
4 Upper Level Demolition Plan
A1.1 Scale: 1/8" = 1'-0"

DEMOLITION LEGEND

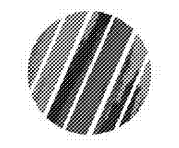
- 1 REMOVE EXISTING DRYWALL AND WOOD STUD PARTITION.
- 2 REMOVE EXISTING DOOR, DOOR FRAME AND DOOR HARDWARE. STORE DOOR AND HARDWARE FOR POSSIBLE REUSE AND RELOCATION.
- 3 REMOVE EXISTING COUNTERTOPS AND BASE CABINETS. SEE PLUMBING DRAWINGS FOR REMOVAL OF SINKS AND PIPING.
- 4 REMOVE WALL-MOUNTED MARKERBOARDS, TACKBOARDS OR OTHER VISUAL DISPLAY BOARDS. GC TO PATCH DRYWALL FOR FUTURE FINISHES.
- 5 REMOVE EXISTING DRYWALL AND WOOD STUD PARTITION TO CREATE A NEW OPENING FOR A DOOR AND DOOR FRAME. COORDINATE WITH RENOVATION PLAN.
- 6 REMOVE EXISTING TOILET PARTITIONS AND TOILET ACCESSORIES. PATCH FLOOR AND WALLS AS NEEDED FOR NEW PARTITIONS OR WALL FINISH.
- 7 REMOVE EXISTING PLUMBING FIXTURES. COORDINATE WITH PLUMBING DRAWINGS FOR PREPARATION OF REPLACEMENT FIXTURES.
- 8 REMOVE EXISTING VINYL COMPOSITION TILE AND FLOOR BASE.
- 9 RETAIN EXISTING CEILING GRID AND TILE TO THE GREATEST EXTENT POSSIBLE. REMOVE ONLY WHAT IS NECESSARY TO RENOVATE MECHANICAL AND ELECTRICAL SYSTEMS. COORDINATE THIS NOTE WITH THE MECHANICAL AND ELECTRICAL RENOVATION PLANS.
- 10 NOT USED.
- 11 REMOVE EXISTING WOOD BRICKMOLD ON EXTERIOR DOOR FRAMES.
- 12 REMOVE EXISTING RANGE/OVEN.
- 13 REMOVE EXISTING DRYWALL AND WOOD STUD PARTITION TO CREATE A NEW OPENING FOR A WINDOW. COORDINATE WITH RENOVATION PLAN.
- 14 REMOVE EXISTING HOLLOW METAL WINDOW. STORE FOR POSSIBLE RELOCATION. COORDINATE WITH RENOVATION PLAN.
- 15 REMOVE EXISTING DOOR AND DOOR HARDWARE. RETAIN EXISTING DOOR FRAME TO BE REUSED WITH RELOCATED DOOR.
- 16 REMOVE EXISTING WOODEN HOOKS.
- 17 REMOVE EXISTING CARPET.
- 18 REMOVE AND DISCARD EXISTING ACOUSTICAL CEILING TILE.
- 19 REMOVE AND DISCARD EXISTING ACOUSTICAL CEILING GRID AND TILE.
- 20 REMOVE EXISTING DRYWALL AND WOOD STUD PARTITION TO AN ELEVATION 9'-6" ABOVE THE FLOOR DUE TO ELECTRICAL SWITCH.



222 cloister court
chapel hill, nc 27514
919.401.8586
www.cra-ae.com



Renovation of
920 Corporate Drive
Orange County Schools
920 Corporate Drive
Hillsborough, North Carolina



no. revisions

no.	revisions

drawn checked
Renovation and Demolition Plans

sheet
A1.1

project no. 1905

date 7/22/19