

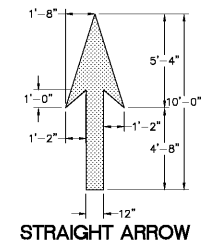
222 cloister court
 chapel hill, nc 27514
 919.401.8586
 www.cra-ga.com

NOTES:
 1. NEW STRIPING SHALL INCLUDE ALL
 ALL EXISTING SITE MARKINGS AS WELL AS
 THE NEW SPACES AND SYMBOLS NOTED.
 2. PARKING STALL MARKINGS TO BE 4" WIDE.

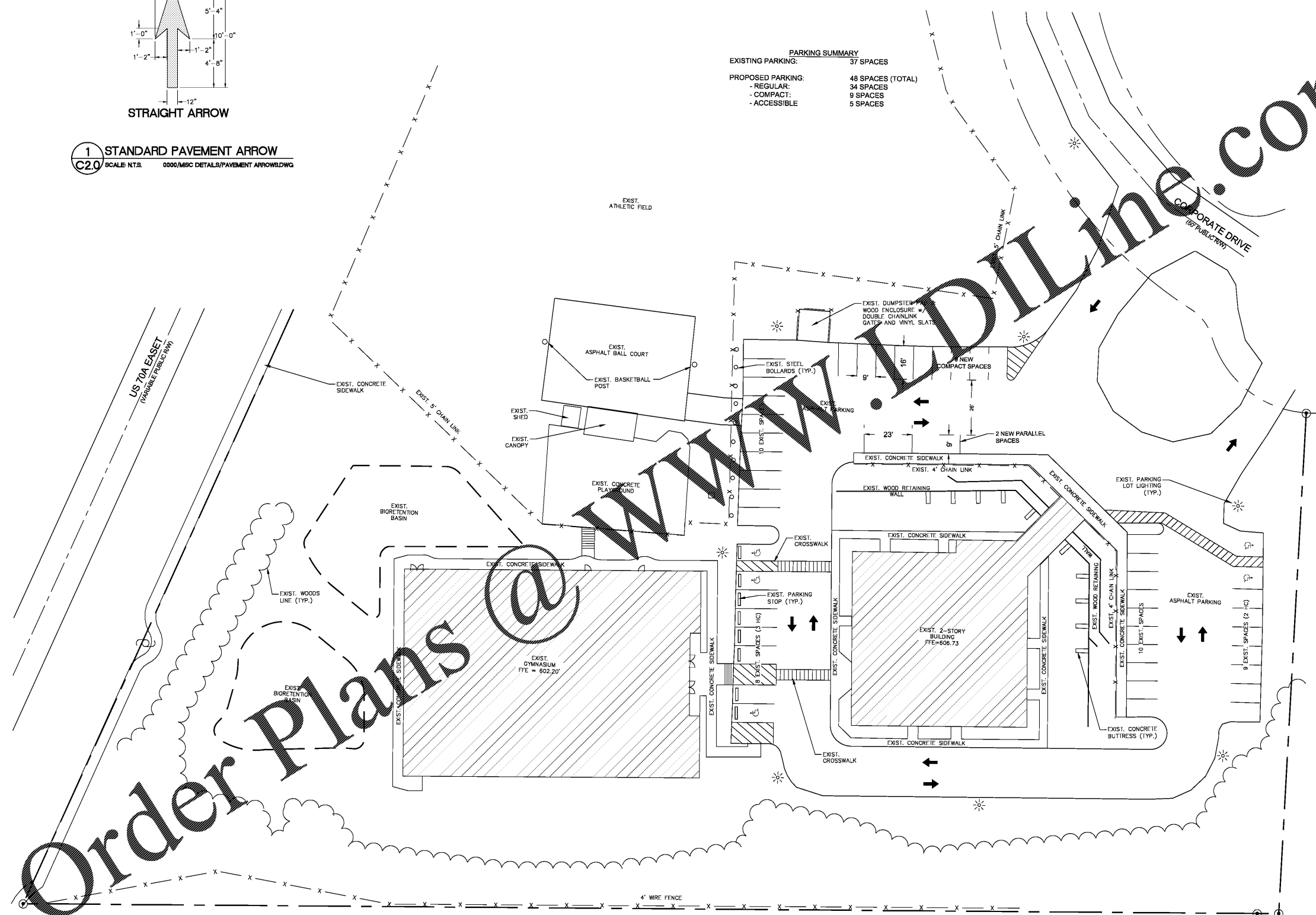
SPECIFICATIONS
 A. Pavement-Marking Paint: Alkyd-resin type, lead and chromate free, ready mixed, complying with AASHTO M 248, Type S; colors complying with FS TT-P-1952.
 1. Color: white.
 B. Sweep and clean surface to eliminate loose material and dust.
 C. Apply paint with mechanical equipment to produce pavement markings, of dimensions indicated, with uniform, straight edges. Apply at manufacturer's recommended rates to provide a minimum wet film thickness of 15 mils (0.4 mm).

PARKING SUMMARY

| | |
|-------------------|-------------------|
| EXISTING PARKING: | 37 SPACES |
| PROPOSED PARKING: | 48 SPACES (TOTAL) |
| - REGULAR: | 34 SPACES |
| - COMPACT: | 9 SPACES |
| - ACCESSIBLE: | 5 SPACES |



1 STANDARD PAVEMENT ARROW
 C2.0 SCALE N.T.S. 0000/MISC DETAILS/PAVEMENT ARROW/DWG



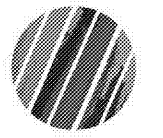
Order Plans @

www.dilling.com



7/22/2019

Renovation of
 920 Corporate Drive
 Orange County Schools
 920 Corporate Drive
 Hillsborough, North Carolina



| no. | revisions |
|-----|-----------|
| | |

The use of these plans and specifications shall be restricted to the original site for which they were prepared and publication hereof is expressly limited to such use. No use, reproduction, or publication by any method, in whole or in part, is permitted. Title to the plans and specifications remain in the original author's possession. It is to be understood that the contractor shall be responsible for the accuracy of the information. Visual contact with these plans and specifications shall constitute notice and acceptance of the acceptance of these specifications.

drawn checked

PROPOSED
 SITE
 PLAN

sheet

C2.0

project no. 1905

date 7/22/19

