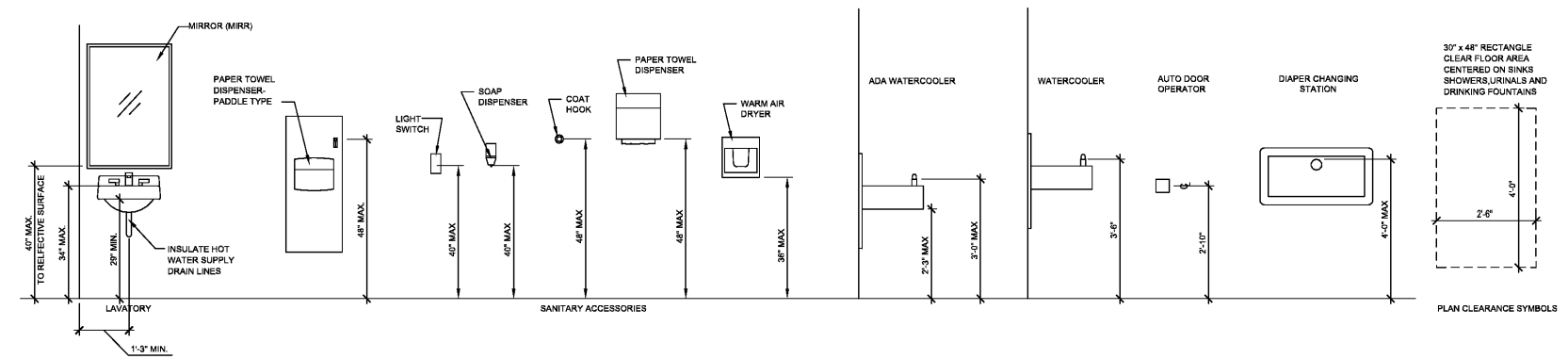
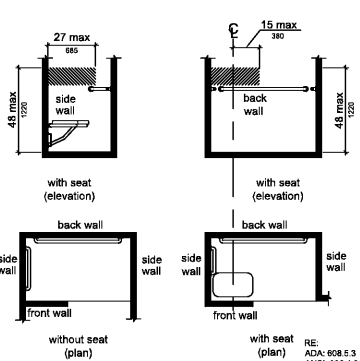


222 cloister court  
chapel hill, nc 27514  
919.401.8586  
www.cra-ae.com

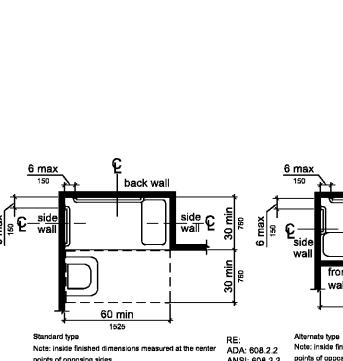


22 TOILET ROOM CLEARANCES & MOUNTING HEIGHTS  
NTS

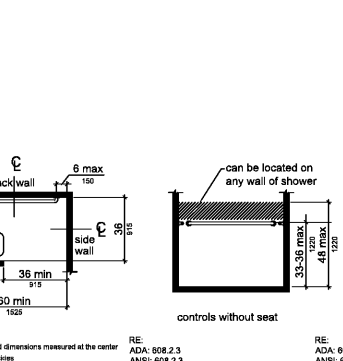


18 ALT. ROLL-IN SHOWER CONTROLS  
NTS

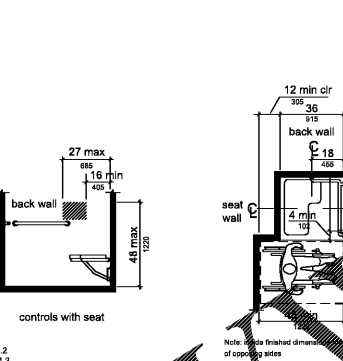
17 ROLL-IN SHOWER COMPARTMENT  
NTS



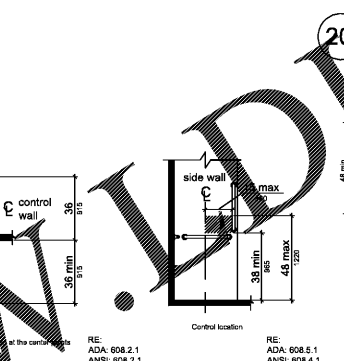
19 SPACING OF GRAB BARS  
NTS



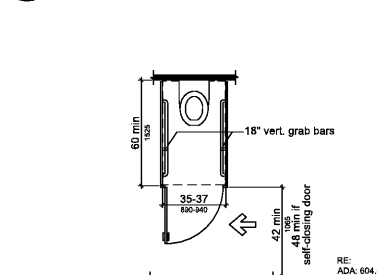
20 SHOWER SEAT SIZE & LOCATION  
NTS



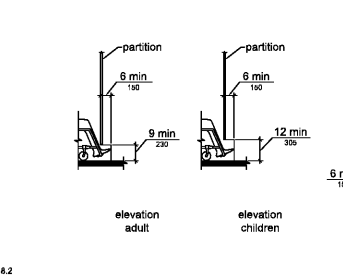
21 NON-CIRCULAR GRAB BAR SIZE  
NTS



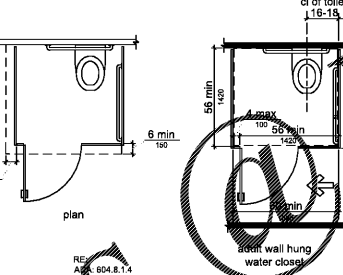
13 AMBULATORY W.C. COMPARTMENT  
NTS



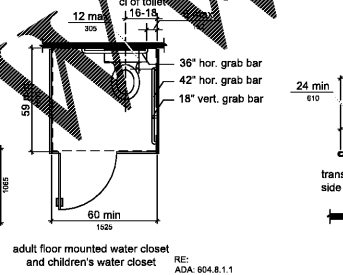
12 W/C ACCESS. COMPARTMENT DOOR CLEARANCE  
NTS



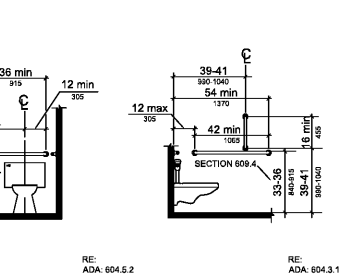
11 W/C ACCESSIBLE W.C. COMPARTMENT SIZE  
NTS



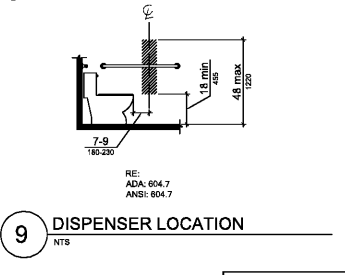
10 WATER CLOSET GRAB BARS  
NTS



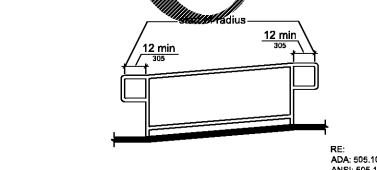
9 DISPENSER LOCATION  
NTS



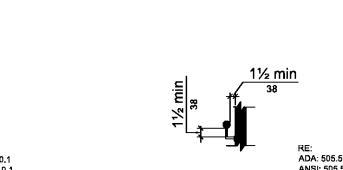
8 WATER CLOSET LOCATION  
NTS



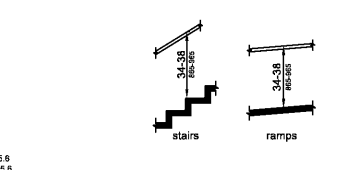
5 HANDRAIL EXTENSIONS @ RAMPS  
NTS



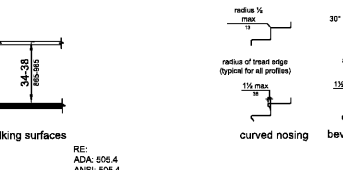
4 HANDRAIL CLEARANCE  
NTS



3 HANDRAIL HEIGHT  
NTS



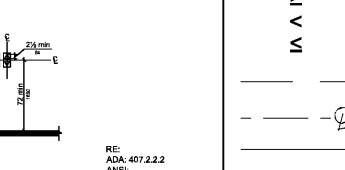
2 STAIR NOSINGS  
NTS



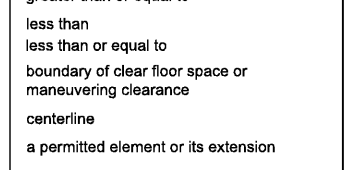
1 VISIBLE HALL SIGNALS  
NTS



7 BOTTOM HANDRAIL EXTENSION @ STAIRS  
NTS

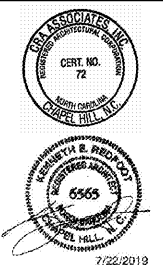


6 TOP HANDRAIL EXTENSION @ STAIRS  
NTS

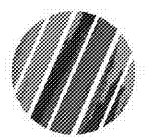


NOTE: THE REQUIREMENTS SHOWN ON THIS SHEET SUPERSEDE ALL OTHER DRAWINGS. CONTRACTOR SHALL NOTIFY ARCHITECT OF DISCREPANCIES. ARCHITECT'S APPROVAL OF SHOP DRAWINGS DOES NOT ABSOLVE CONTRACTOR'S RESPONSIBILITY FOR ADA COMPLIANCE.

Convention	Description
36	dimension showing English units (in inches unless otherwise specified) above the line and SI units (in millimeters unless otherwise specified) below the line
915	
6	dimension for small measurements
150	
33-36	dimension showing a range with minimum - maximum
840-915	
min	minimum
max	maximum
>	greater than
≥	greater than or equal to
<	less than
≤	less than or equal to
—	boundary of clear floor space or maneuvering clearance
—○—	centerline
—○—	a permitted element or its extension
→	direction of travel or approach
—	a wall, floor, ceiling or other element cut in section or plan



Renovation of  
920 Corporate Drive  
Orange County Schools  
920 Corporate Drive  
Hillsborough, North Carolina



no.	revisions

the use of these plans and specifications shall be restricted to the original site for which they were prepared and maintained. If they are used for any other project, the user assumes all responsibility for any errors, omissions, or omissions. The user shall be responsible for obtaining all necessary permits and approvals. The user shall be responsible for obtaining all necessary permits and approvals. The user shall be responsible for obtaining all necessary permits and approvals.

drawn checked

**Accessibility Diagrams Sheet B**

sheet

**A0.4**

project no. 1905

date 7/22/19

Order Plans