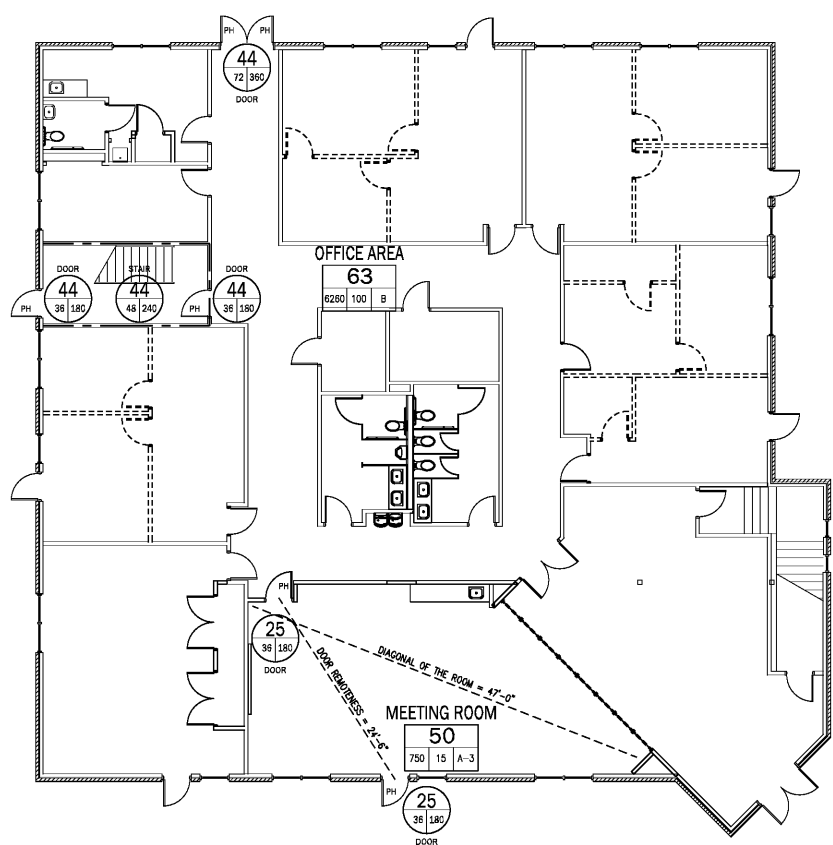


Order Plans @ www.edwinline.com



1 Lower Level Life Safety Plan
A0.2 Scale: 1/8" = 1'-0"

ROOM OCCUPANCY INFORMATION

STORAGE 2

580	500	S
-----	-----	---

ROOM NAME
CALCULATED OCCUPANT LOAD
OCCUPANCY CLASSIFICATION
S.F. PER OCCUPANT
ACTUAL SQUARE FOOTAGE

OCCUPANCY CLASSIFICATION KEY

- A-C ASSEMBLY - CONCENTRATED
- A-F ASSEMBLY - FIDEL SEATING
- A-U ASSEMBLY - UNCONCENTRATED
- B BUSINESS
- E-C EDUCATION, CLASSROOM AREA
- E-S EDUCATION, SHOPS & OTHER
- IN INDUSTRIAL
- L LOCKER AREA
- RR READING ROOM
- ST STACK AREA
- K KITCHEN
- S STORAGE
- M MECHANICAL

EGRESS COMPONENT INFORMATION

DOOR TYPE OF COMPONENT

160 ACTUAL OCCUPANT LOAD
68 540 MAX OCCUPANT LOAD

CLEAR WIDTH (INCHES)

PH PANIC HARDWARE

REQ. EGRESS WIDTH PER OCCUPANT SERVED
STAIRWAYS: 0.20' OTHER: 0.20'
(REFER TO NBCI 1003.1)

RATED CONSTRUCTION LEGEND

- 1 HR FIRE WALL
- 2 HR FIRE WALL

Upper Level Occupant Load

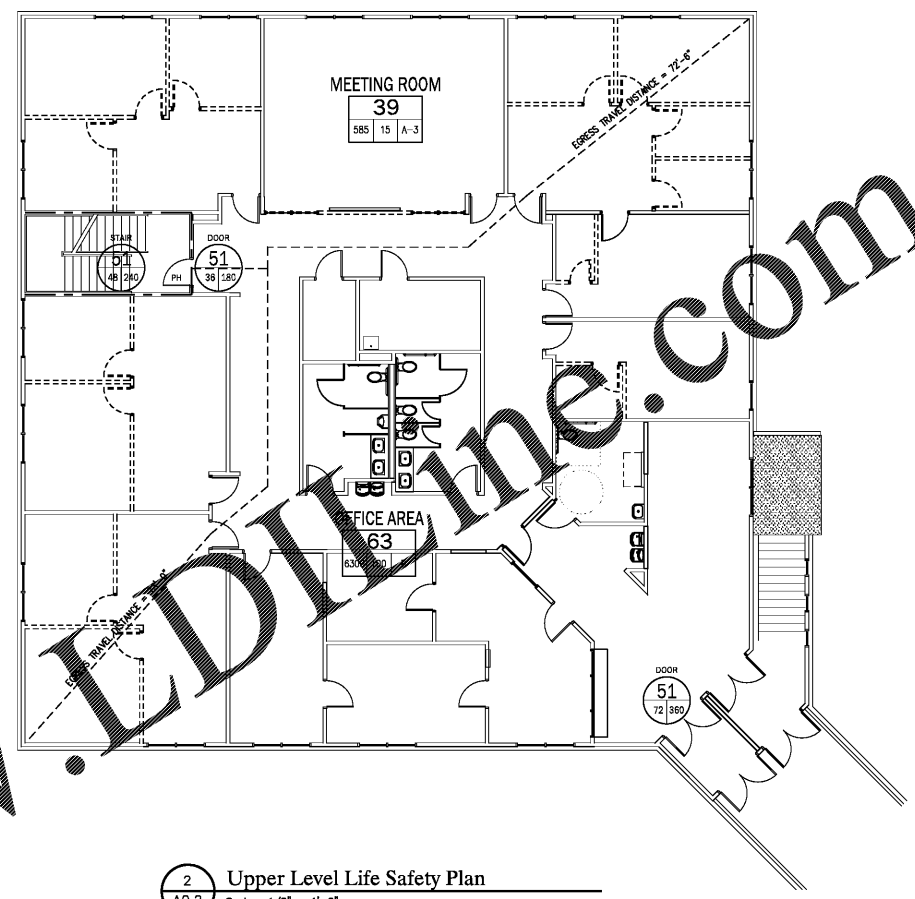
Room	Type	SF	Load	Cap.
Office Area	B	6300	100	63
Meeting Room	A-3	585	15	39

TOTAL CAPACITY 102 PERSONS

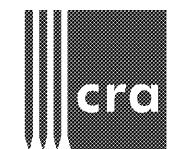
Lower Level Occupant Load

Room	Type	SF	Load	Cap.
Office Area	B	6280	100	63
Meeting Room	A-3	750	15	39

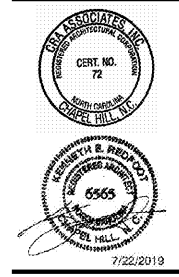
TOTAL CAPACITY 102 PERSONS



2 Upper Level Life Safety Plan
A0.2 Scale: 1/8" = 1'-0"



222 cloister court
chapel hill, nc 27514
919.401.8586
www.cra-ae.com



Renovation of
920 Corporate Drive
Orange County Schools
920 Corporate Drive
Hillsborough, North Carolina



no.	revisions

The use of these plans and specifications shall be restricted to the original site for which they were prepared and maintained. They are not to be used for any other project, modification, or substitution by any person or firm. The use of these plans and specifications remain to the architect without prejudice if it is to be returned upon request to the architect. Must comply with these plans and specifications and applicable state code and regulations at the acceptance of these restrictions.

drawn checked

Life Safety Plans

sheet

A0.2

project no. 1905

date 7/22/19