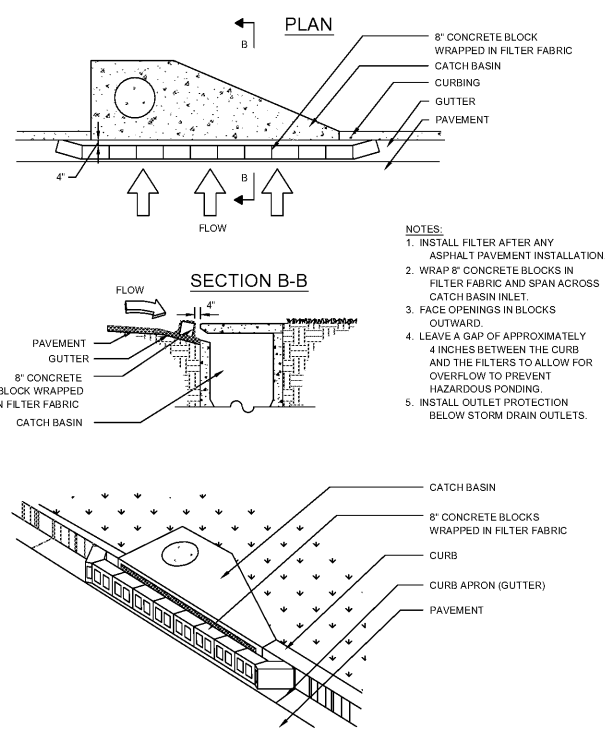


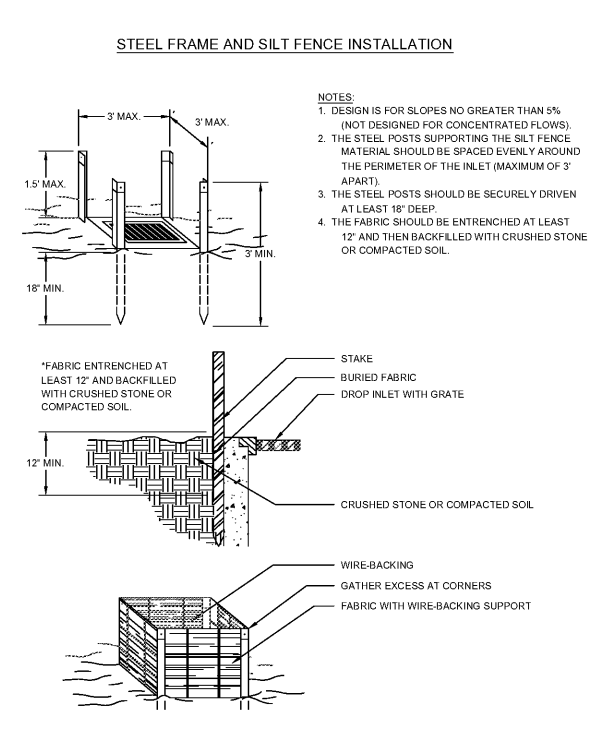
Drawing name: K:\AT_Civil\4023009_Monroe_GA\CAD\Plan\Sheet\C5-81 EROSION CONTROL DETAILS.dwg CS-81 EROSION CONTROL DETAILS Aug 08, 2019 10:55am by davis.woodson

Sd2-P INLET SEDIMENT TRAP: CURB INLET PROTECTION



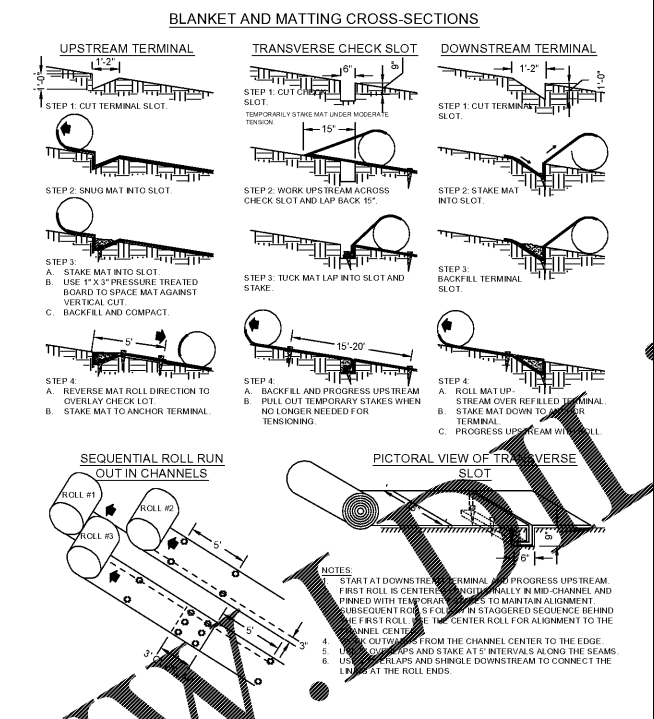
INLET SEDIMENT TRAP - CURB INLET PROTECTION (Sd2-P)

Sd2-F INLET SEDIMENT TRAP: FILTER FABRIC W/ SUPPORTING FRAME



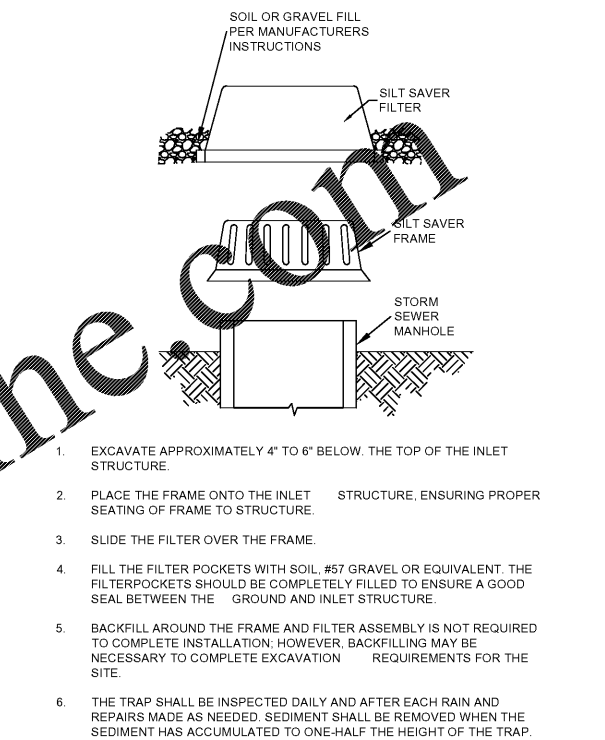
INLET SEDIMENT TRAP - FILTER FABRIC (Sd2-F)

Ss TYPICAL INSTALLATION GUIDELINES FOR ROLLED EROSION CONTROL PRODUCTS (RECP)



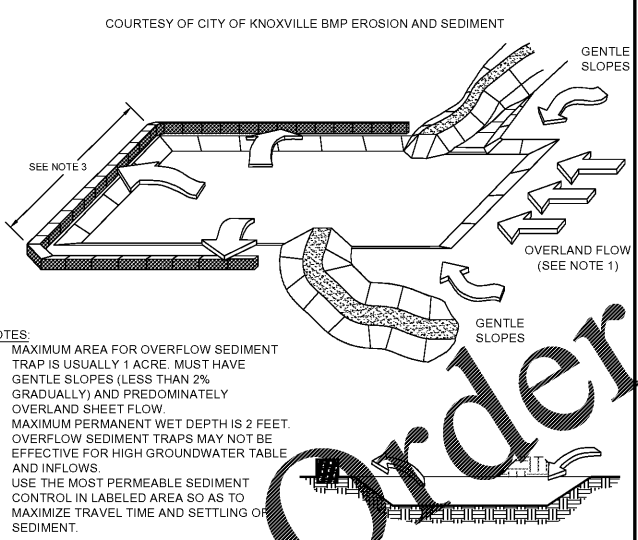
SLOPE STABILIZATION (Ss)

Sd2-SS INLET SEDIMENT TRAP: SILT SAVER DROP INLET PROTECTION



INLET SEDIMENT TRAP - SILT SAVER (Sd2-SS)

Sd4-A TEMPORARY SEDIMENT TRAP: OVERFLOW OUTLET



TEMPORARY SEDIMENT TRAP - OVERFLOW (Sd4-A)

Kimley-Horn
© 2019 Kimley-Horn and Associates, Inc.
6710 BRIDGE STREET, NEW
ATLANTA, GEORGIA 30308
PHONE: (404) 419-8700
WWW.KIMLEY-HORN.COM

OWNER COMPANY
STREET ADDRESS, SUITE NUMBER
CITY, STATE, ZIP
PHONE: 000.000.0000

NO.	ISSUANCE AND REVISION DESCRIPTIONS	DATE	BY

PROJECT NAME
PROJECT STREET ADDRESS, PROJECT CITY, STATE
LAND LOT XXX, ZIP AND DISTRICT

GSWCC NO. (LEVEL II) 00000XXXXX
DRAWN BY JTR
DESIGNED BY BRM
REVIEWED BY JRH
DATE 00/00/0000
PROJECT NO 01XXXXXXX

TITLE
EROSION CONTROL DETAILS

SHEET NUMBER
C5-81