

4. PRODUCT SPECIFIC PRACTICES

- A. PETROLEUM BASED PRODUCTS - CONTAINERS FOR PRODUCTS SUCH AS FUELS, LUBRICANTS, AND TARS WILL BE INSPECTED DAILY FOR LEAKS AND SPILLS. THIS INCLUDES ON-SITE VEHICLE AND MACHINERY DAILY INSPECTIONS AND REGULAR PREVENTATIVE MAINTENANCE OF SUCH EQUIPMENT. EQUIPMENT MAINTENANCE AREAS WILL BE LOCATED AWAY FROM STATE WATER, NATURAL DRAINS, AND STORMWATER DRAINAGE INLETS. IN ADDITION, TEMPORARY FUELING TANKS SHALL HAVE A SECONDARY CONTAINMENT LINER TO PREVENT/MINIMIZE SITE CONTAMINATION. DISCHARGE OF OILS, FUELS, AND LUBRICANTS IS PROHIBITED. PROPER DISPOSAL METHOD WILL INCLUDE COLLECTION IN A SUITABLE CONTAINER AND DISPOSAL AS REQUIRED BY LOCAL AND STATE REGULATIONS.
- B. PAINTS, FINISHES, AND SOLVENTS - ALL PRODUCTS WILL BE STORED IN TIGHTLY SEALED ORIGINAL CONTAINERS WHEN NOT IN USE. EXCESS PRODUCT WILL NOT BE DISCHARGED TO THE STORMWATER COLLECTION SYSTEM. EXCESS PRODUCTS, MATERIALS USED WITH THESE PRODUCTS, AND PRODUCT CONTAINERS WILL BE DISPOSED OF ACCORDING TO MANUFACTURER'S RECOMMENDATIONS AND STANDARDS.
- C. CONCRETE TRUCK WASHING - NO CONCRETE TRUCKS WILL BE ALLOWED TO WASH OUT OR DISCHARGE SURPLUS CONCRETE OR DRUM WASH WATER ON SITE.
- D. FERTILIZER/HERBICIDES - THESE PRODUCTS WILL BE APPLIED AT RATES THAT DO NOT EXCEED THE MANUFACTURER'S SPECIFICATIONS OR ABOVE THE GUIDELINES SET FORTH IN THE CROP ESTABLISHMENT OR IN THE GSWCC MANUAL FOR EROSION AND SEDIMENT CONTROL IN GEORGIA. ANY STORAGE OF THESE MATERIALS WILL BE UNDER ROOF IN SEALED CONTAINERS.
- E. BUILDING MATERIALS - NO BUILDING OR CONSTRUCTION MATERIALS WILL BE BURIED OR DISPOSED OF. ALL SUCH MATERIAL WILL BE DISPOSED OF IN PROPER WASTE DISPOSAL PROCEDURES.

5. WASTE MATERIALS

- A. NO WASTE WILL BE DISPOSED OF INTO STORMWATER INLETS OR WATERS OF THE STATE.
- B. ALL WASTE MATERIALS WILL BE COLLECTED AND STORED IN A SECURELY LIDDED METAL DUMPSTER. THE DUMPSTER WILL MEET ALL SOLID WASTE MANAGEMENT REGULATIONS. ALL TRASH AND CONSTRUCTION DEBRIS FROM THE SITE WILL BE DEPOSITED IN THE DUMPSTER. THE DUMPSTER WILL BE EMPTIED A MINIMUM OF ONCE PER WEEK OR MORE OFTEN IF NECESSARY AND TRASH WILL BE HAULED AS REQUIRED BY LOCAL REGULATIONS. NO CONSTRUCTION WASTE WILL BE BURIED ON SITE.
- C. ALL PERSONNEL WILL BE INSTRUCTED ON PROPER PROCEDURES FOR WASTE DISPOSAL. A NOTICE STATING THESE PRACTICES WILL BE POSTED AT THE JOBSITE AND THE CONTRACTOR WILL BE RESPONSIBLE FOR SEEING THAT THESE PROCEDURES ARE FOLLOWED.

6. HAZARDOUS WASTES

- A. ALL HAZARDOUS WASTE MATERIALS WILL BE DISPOSED OF IN THE MANNER SPECIFIED BY LOCAL, STATE, AND/OR FEDERAL REGULATIONS AND BY THE MANUFACTURER OF SUCH PRODUCTS. THE JOB SITE SUPERINTENDENT, WHO WILL ALSO BE RESPONSIBLE FOR SEEING THAT THESE PRACTICES ARE FOLLOWED, WILL INSTRUCT SITE PERSONNEL IN THESE PRACTICES. MATERIAL SAFETY DATA SHEETS (MSDS) FOR EACH SUBSTANCE WITH HAZARDOUS PROPERTIES THAT IS USED ON THE JOB SITE WILL BE OBTAINED AND USED FOR THE PROPER MANAGEMENT OF POTENTIAL WASTES THAT MAY RESULT FROM THESE PRODUCTS. AN MSDS WILL BE POSTED IN THE IMMEDIATE AREA WHERE PRODUCT IS STORED AND/OR USED AND ANOTHER COPY OF EACH MSDS WILL BE MAINTAINED IN THE ESPCC FILE AT THE JOBSITE. CONSTRUCTION TRAILER EMPLOYEES, EACH EMPLOYEE WHO MUST HANDLE A SUBSTANCE WITH HAZARDOUS PROPERTIES WILL BE INSTRUCTED ON THE USE OF MSDS SHEETS AND THE SPECIFIC INFORMATION IN THE APPLICABLE MSDS FOR THE PRODUCT HE/SHE IS USING, PARTICULARLY REGARDING SPILL CONTROL TECHNIQUES.
- B. THE CONTRACTOR WILL IMPLEMENT THE SPILL PREVENTION CONTROL AND COUNTERMEASURES (SPCC) PLAN FOUND WITHIN THIS ESPCC AND WILL TRAIN ALL PERSONNEL IN THE PROPER CLEANUP AND HANDLING OF SPILLED MATERIALS. NO HAZARDOUS MATERIALS OR HAZARDOUS WASTES WILL BE ALLOWED TO COME IN CONTACT WITH STORMWATER DISCHARGES. IF SUCH CONTACT OCCURS, THE STORMWATER DISCHARGE WILL BE CONTAINED ON SITE UNTIL APPROPRIATE MEASURES IN COMPLIANCE WITH STATE AND FEDERAL REGULATIONS ARE TAKEN TO DISPOSE OF SUCH CONTAMINATED STORMWATER. IT SHALL BE THE RESPONSIBILITY OF THE JOBSITE SUPERINTENDENT TO PROPERLY TRAIN ALL PERSONNEL IN THE USE OF THE SPCC PLAN.

7. SANITARY WASTES

- A. A MINIMUM OF ONE PORTABLE SANITARY UNIT WILL BE PROVIDED FOR EVERY TEN (10) WORKERS ON THE SITE. ALL SANITARY WASTE WILL BE COLLECTED FROM THE PORTABLE UNITS A MINIMUM OF ONE (1) TIME PER WEEK BY A LICENSED PORTABLE FACILITY PROVIDER IN COMPLETE COMPLIANCE WITH LOCAL AND STATE REGULATIONS.
- B. ALL SANITARY WASTE UNITS WILL BE LOCATED IN AN AREA WHERE THE LIKELIHOOD OF THE UNIT CONTRIBUTING TO STORMWATER DISCHARGE WILL BE NEGLIGIBLE. ADDITIONAL CONTAINMENT BMPs MUST BE IMPLEMENTED, SUCH AS GRAVEL BAGS OR SPECIFICALLY DESIGNED PLASTIC SKID CONTAINERS AROUND THE BASE TO PREVENT WASTES FROM CONTRIBUTING TO STORMWATER DISCHARGES. THE LOCATION OF SANITARY WASTE UNITS MUST BE IDENTIFIED ON THE EROSION CONTROL PLAN GRADING PHASE, SHEET C-4B, BY THE CONTRACTOR ONCE THE LOCATIONS HAVE BEEN DETERMINED.
- C. SANITARY SEWER WILL BE PROVIDED BY WALTON COUNTY AT THE COMPLETION OF THIS PROJECT.

8. BUILDING MATERIALS

- A. FOR BUILDING MATERIALS, BUILDING PRODUCTS, CONSTRUCTION WASTES, TRASH, LANDSCAPE MATERIALS, FERTILIZERS, PESTICIDES, HERBICIDES, DETERGENTS, SANITARY WASTE AND OTHER MATERIALS PRESENT ON THE SITE, PROVIDE COVER (e.g. PLASTIC SHEETING, TEMPORARY ROOFS) TO MINIMIZE THE EXPOSURE OF THESE PRODUCTS TO PRECIPITATION AND TO STORMWATER, OR SIMILARLY EFFECTIVE MEANS DESIGNED TO MINIMIZE THE DISCHARGE OF POLLUTANTS FROM THESE AREAS. MINIMIZATION OF EXPOSURE IS NOT REQUIRED IN CASES WHERE EXPOSURE TO PRECIPITATION AND TO STORMWATER WILL NOT RESULT IN A DISCHARGE OF POLLUTANTS, OR WHERE EXPOSURE OF A SPECIFIC MATERIAL OR PRODUCT POSES A LOW RISK TO STORMWATER CONTAMINATION (SUCH AS FINAL PRODUCTS AND MATERIALS INTENDED FOR OUTDOOR USE).

9. OFFSITE VEHICLE TRACKING

- A. A STABILIZED CONSTRUCTION EXIT HAS BEEN PROVIDED TO HELP REDUCE VEHICLE TRACKING OF SEDIMENT. SEE SHEET C5-10 THRU C5-30, AND C5-30 FOR CONSTRUCTION EXIT LOCATIONS AND DETAILS. THE PAVED STREET ADJACENT TO THE EXIT WILL BE INSPECTED DAILY FOR TRACKING OF MUD, DIRT OR ROCK. DUMP TRUCKS HAVING MATERIAL FROM THE CONSTRUCTION SITE WILL BE COVERED WITH A TARPULIN.

EROSION CONTROL LEGEND

VEGETATIVE MEASURES:

- Bf BUFFER ZONE
- Cs COASTAL DUNE STABILIZATION
- Ds1 DISTURBED AREA STABILIZATION: (WITH MULCHING ONLY)
- Ds2 DISTURBED AREA STABILIZATION: (WITH TEMPORARY SEEDING)
- Ds3 DISTURBED AREA STABILIZATION: (WITH PERMANENT VEGETATION)
- Ds4 DISTURBED AREA STABILIZATION: (WITH SODDING)
- Du DUST CONTROL ON DISTURBED AREAS
- Fl-Co FLOCCULANTS COAGULANTS
- Sb STREAMBANK STABILIZATION: (USING PERMANENT VEGETATION)
- Ss SLOPE STABILIZATION
- Sp SAMPLING POINT
- Tac TACKIFIERS AND BINDERS

STRUCTURAL MEASURES:

- Cd-S STONE CHECK DAM
- Cd-Hb STRAW-BALE CHECK DAM
- Cd-Fs STRAW-BALE CHECK DAM
- Ch-1 CHANNEL STABILIZATION: VEGETATED LINING
- Ch-2 CHANNEL STABILIZATION: ROCK RIP-RAP LINING
- Ch-3 CHANNEL STABILIZATION: CONCRETE LINING
- Co CONSTRUCTION EXIT
- Cr CONSTRUCTION ROAD STABILIZATION
- Dc STREAM DIVERSION CHANNEL
- Dj DIVERSION
- Dn1 TEMPORARY DOWNDRAIN STRUCTURE
- Dn2 PERMANENT DOWNDRAIN STRUCTURE
- Fr FILTER RING
- Ga GABION
- Gr GRADE STABILIZATION STRUCTURE
- Lv LEVEL SPREADER
- Rd ROCK FILTER DAM
- Re RETAINING WALL
- Rt-P RETROFITTING: PERFORATED HALF-ROUND PIPE WITH STONE FILTER
- Rt-B RETROFITTING: SLOTTED BOARD DAM WITH STONE OR FILTER FABRIC
- Sd1-S SEDIMENT BARRIER: SENSITIVE AREAS
- Sd1-NS SEDIMENT BARRIER: NON-SENSITIVE AREAS
- Sd1-BB SEDIMENT BARRIER: BRUSH BARRIER

STRUCTURAL MEASURES (continued):

- Sd2-F INLET SEDIMENT TRAP: FILTER FABRIC WITH SUPPORTING FRAME
- Sd2-B INLET SEDIMENT TRAP: Baffle Box
- Sd2-Bc INLET SEDIMENT TRAP: BLOCK AND GRAVEL DROP INLET PROTECTION
- Sd2-G INLET SEDIMENT TRAP: GRAVEL DROP INLET PROTECTION
- Sd2-S INLET SEDIMENT TRAP: SOD INLET PROTECTION
- Sd2-P INLET SEDIMENT TRAP: CURB INLET PROTECTION
- Sd2-SS INLET SEDIMENT TRAP: SILT SAVER
- Sd3 TEMPORARY SEDIMENT BASIN
- Sd4-A TEMPORARY SEDIMENT TRAP: OVERFLOW
- Sd4-B TEMPORARY SEDIMENT TRAP: COMBINATION STRAW BALE & SILT FENCE OUTLET
- Sd4-C TEMPORARY SEDIMENT TRAP: ROCK OUTLET
- Sk FILTER SURFACE SKIMMER
- SpB SEEP BERM
- Sr TEMPORARY STREAM CROSSING
- Sl STORM DRAIN OUTLET PROTECTION
- Su SURFACE ROUGHENING
- Tc TURBIDITY CURTAIN
- Tp TOPSOILING
- Tr TREE PROTECTION
- Wt VEGETATED WATERWAY OR STORMWATER CONVEYANCE CHANNEL

EROSION CONTROL LINETYPES / SYMBOLS

- Tree Protection Fence
- CYB2 Soil Type Delineation
- Flow Arrow
- Limits of Disturbance

**GSWCC** GEORGIA SOIL AND WATER CONSERVATION COMMISSION

**BRADLEY L. HORBAL**  
Level II Certified Design Professional

CERTIFICATION NUMBER: 000022363  
ISSUE DATE: 02/01/2019 EXPIRES: 02/01/2022

**PRIMARY PERMITTEE:**  
NAME: MIKE BIRNBREY  
COMPANY: SOUTHBOUND DEVELOPMENT GROUP  
ADDRESS: 3542 VANET ROAD  
ATLANTA, GA 30341  
PHONE: (404) 987-2402

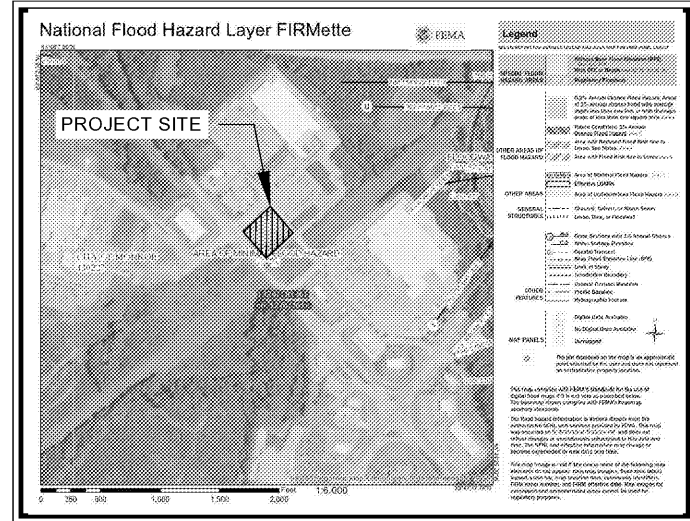
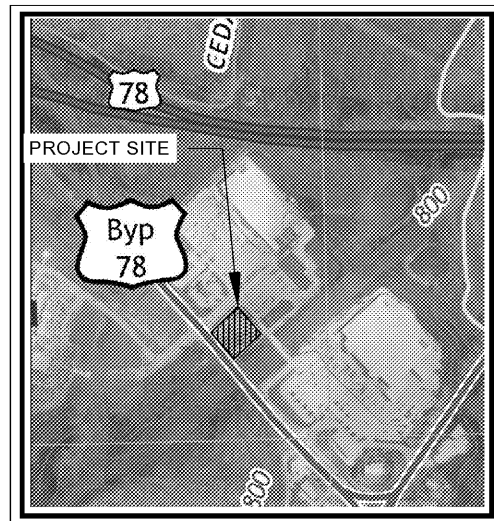
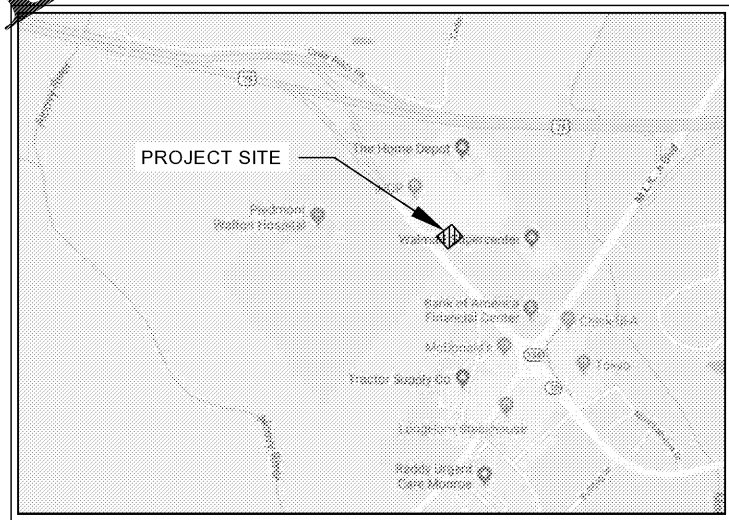
**SITE AREA SUMMARY:**  
TOTAL SITE AREA = 0.92 ACRES  
TOTAL DISTURBED AREA = 0.92 ACRES

**24-HOUR CONTACT:**  
NAME: BRADLEY HORBAL  
COMPANY: KIMLEY-HORN & ASSOCIATES, INC.  
NUMBER: 770-825-0744

START DATE: 11/2019 END DATE: 11/2020

THIS SCHEDULE IS TO BE USED FOR PERMITTING PURPOSES ONLY. REFER TO APPROVED PROJECT SCHEDULE FOR EXACT CONSTRUCTION SEQUENCING.

DESCRIPTION	MONTH											
	1	2	3	4	5	6	7	8	9	10	11	12
INITIAL EROSION CONTROL BMP INSTALL												
7-DAY LETTER												
S&S INSTALLATION AND MAINTENANCE												
DEMOLITION												
CLEARING, GRUBBING, GRADING												
TEMPORARY GRASSING												
PERMANENT GRASSING (IF APPLICABLE)												
INTER-EROSION CONTROL BMPs INSTALL												
MAINT. OF EROSION CONTROL DEVICES												
STORM AND SANITARY SEWER INSTALL												
BUILDING CONSTRUCTION												
FINAL EROSION CONTROL BMPs INSTALL												
FINAL PAVING												
CLEANING OF STORM DRAIN												
FINAL LANDSCAPING												
REMOVAL OF EROSION CONTROL MEASURES												



THE PROJECT SITE DOES NOT LIE WITHIN A FLOOD HAZARD AREA PER FIRM PANEL 13297C0136E DATED 12/08/2016.

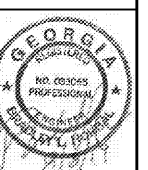
FEMA MAP

**Kimley-Horn**  
© 2019 KIMLEY-HORN AND ASSOCIATES, INC.  
3542 VANET ROAD, SUITE 350  
PEACHTREE CORNERS, GEORGIA 30082  
WWW.KIMLEY-HORN.COM

**SOUTHBOUND DEVELOPMENT GROUP**  
3542 VANET ROAD  
ATLANTA, GA 30341  
PHONE: (404) 987-2402

NO.	ISSUANCE AND REVISION DESCRIPTIONS	DATE	BY

**SPRING STREET EXCHANGE MONROE OUTPARCEL**  
2150 WEST SPRING STREET, MARIETTA, GA 30066  
LAND LOT 8, 3 DISTRICT



GSWCC NO. (LEVEL II) 000022363  
DRAWN BY DEW  
DESIGNED BY RWB  
REVIEWED BY BLH  
DATE 08/08/2019  
PROJECT NO. 014023009

TITLE  
**EROSION CONTROL NOTES**  
SHEET NUMBER  
**C5-03**