

PIPE MATERIAL NOTE:

- STORMDRAIN PIPE SHALL BE ANY OF THE FOLLOWING:
1. SPIRAL RIB CORRUGATED STEEL PIPE PER AASHTO M36 AND ASTM A760 WITH A MANNING'S COEFFICIENT OF 0.012. COATING SHALL BE ALUMINIZED TYPE 2 PER SECTION 26.
 2. MINIMUM PIPE TO BE INSTALLED PER THE REQUIREMENTS OF ASTM A798 AND AASHTO SECTION 26.
 3. HIGH DENSITY POLYETHYLENE (HDPE) PIPE PER THE REQUIREMENTS OF AASHTO M294 TYPE S AND AASHTO M252 TYPE S (SMOOTH INTERIOR, CORRUGATED EXTERIOR). PIPE TO BE INSTALLED PER THE REQUIREMENTS OF ASTM D2321 AND AASHTO SECTION 30. ASTM F2648 PIPE IS NOT AN ACCEPTABLE SUBSTITUTION.
 4. REINFORCED CONCRETE PIPE PER THE REQUIREMENTS OF ASTM C76. PIPE SHALL BE CLASS 3 MINIMUM. PIPE SHALL BE INSTALLED PER THE REQUIREMENTS OF ASTM C1479 AND AASHTO SECTION 27.

NOTE: WHERE THIS SPECIFICATION DISAGREES WITH MUNICIPAL ORDINANCE, MUNICIPAL ORDINANCE SHALL PREVAIL.

PROFILE LINE LEGEND:

- PROPOSED GRADE LINE
- EXISTING GRADE LINE
- 25-YR HYDRAULIC GRADE LINE

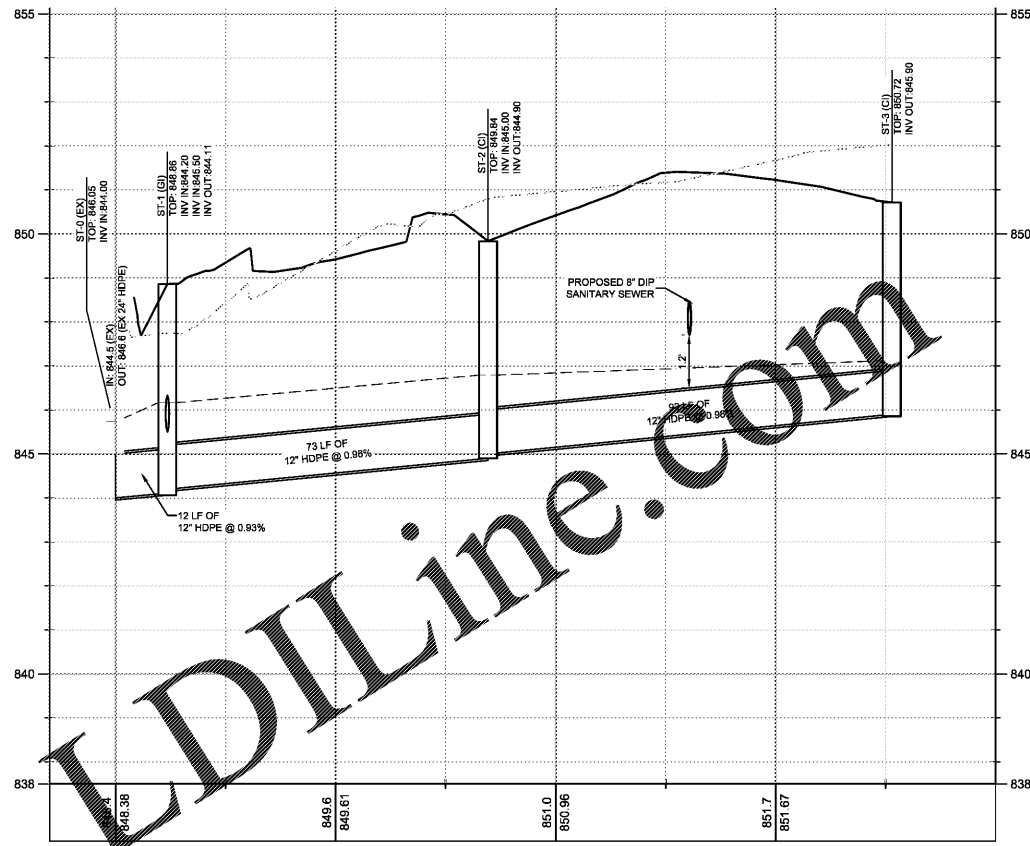
STORM DRAINAGE PROFILE NOTES:

1. ALL PIPE LENGTHS SPECIFIED IN THESE PLANS ARE THE HORIZONTAL DISTANCE AND ARE SHOWN FOR REFERENCE ONLY. IT IS THE RESPONSIBILITY OF THE CONTRACTOR TO DETERMINE ACTUAL LENGTHS BASED ON PROPOSED PIPE SLOPE. PIPE LENGTHS IN PLANS ARE MEASURED FROM CENTER OF STRUCTURE TO CENTER OF STRUCTURE UNLESS OTHERWISE NOTED.
2. CONTRACTOR TO FIELD VERIFY EXISTING INVERT FOR STORM DRAINAGE SERVICE CONNECTIONS PRIOR TO CONSTRUCTION. CONTRACTOR SHALL NOTIFY ENGINEER OF DISCREPANCY PRIOR TO PROCEEDING.
3. ALL STORM PIPE SHALL HAVE BEDDING PER BEDDING DETAILS IN CONSTRUCTION DETAIL SHEETS.
4. ALL STORM PIPING TO BE RCP UNLESS OTHERWISE NOTED. SEE CHART FOR PIPE CLASS.
5. RIM ELEVATIONS GIVEN ARE APPROXIMATE. CONTRACTOR SHALL REFERENCE GRADING PLAN FOR STRUCTURE THROAT / RIM ELEVATIONS.
6. IF ANY CONFLICTS, DISCREPANCIES, OR ANY OTHER UNSATISFACTORY CONDITIONS ARE DISCOVERED, EITHER ON THE CONSTRUCTION DOCUMENTS OR FIELD CONDITIONS, THE CONTRACTOR MUST NOTIFY THE ENGINEER IMMEDIATELY AND SHALL NOT COMMENCE FURTHER OPERATION UNTIL THE CONFLICTS, DISCREPANCIES, OR OTHER UNSATISFACTORY CONDITIONS ARE RESOLVED.
7. ALL STORM JOINTS TO BE WATER TIGHT.

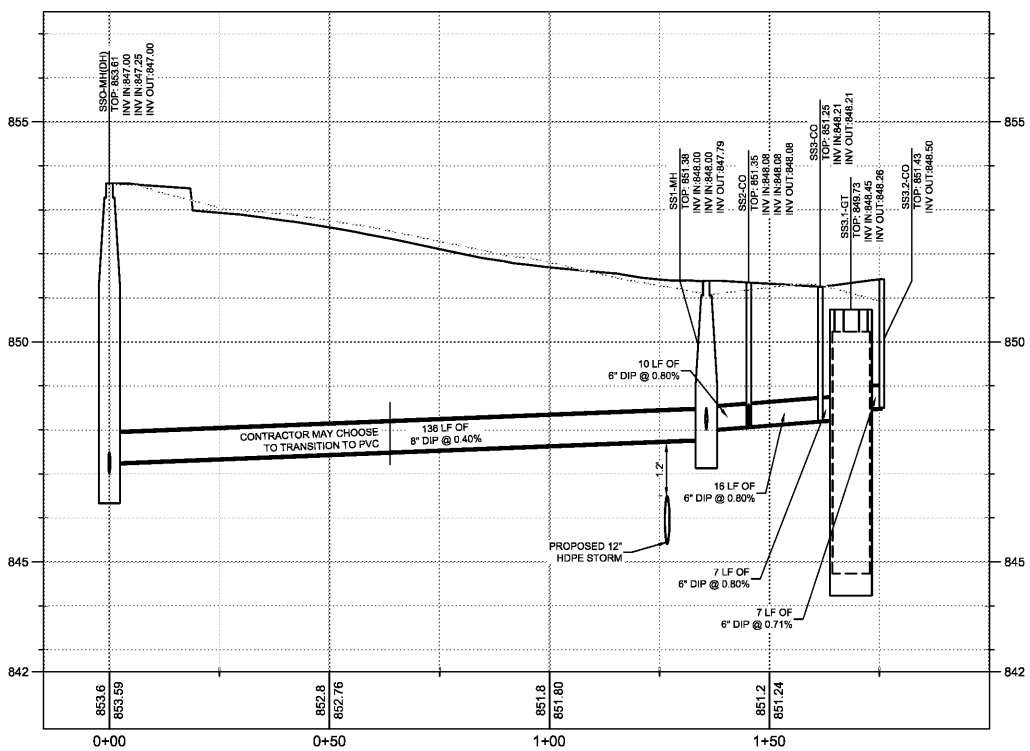
PipeChart (25-YR STORM EVENT)

Line No.	Line ID	Line ID	Inlet ID	Line Size (in)	Line Length (ft)	Line Slope (%)	Invert Up (ft)	Invert Dn (ft)	Line Type	n-val Pipe	Drng Area (ac)	Runoff Coeff (C)	Tc (min)	I Sys (in/hr)	Total Runoff (cfs)	Known Q (cfs)	Flow Rate (cfs)	Capac Full (cfs)	Vel Dn (ft/s)	HGL Up (ft)	HGL Dn (ft)
1	PIPE -12	PIPE -12	ST-1 (G)	12	11.787	2.00	845.24	845.00	Cir	0.011	0.20	0.90	5.7	8.65	5.29	0.00	5.29	5.95	8.55	846.17	845.73
2	PIPE -13	PIPE -13	ST-2 (C)	12	72.884	1.00	845.98	845.24	Cir	0.011	0.17	0.90	5.5	8.79	3.80	0.00	3.80	4.21	4.99	846.79	846.17
3	PIPE -14	PIPE -14	ST-3 (C)	12	91.750	0.50	846.42	845.96	Cir	0.011	0.31	0.90	5.0	9.07	2.56	0.00	2.56	2.98	3.69	847.12	846.79

Page 1



PROFILE VIEW
STRM
1" = 10' HORZ.
1" = 1' VERT.



PROFILE VIEW
SSWR
1" = 10' HORZ.
1" = 1' VERT.

SANITARY SEWER PROFILE NOTES:

1. ALL PIPE LENGTHS SPECIFIED IN THESE PLANS ARE THE HORIZONTAL DISTANCE AND ARE SHOWN FOR REFERENCE ONLY. IT IS THE RESPONSIBILITY OF THE CONTRACTOR TO DETERMINE ACTUAL LENGTHS BASED ON PROPOSED PIPE SLOPE. PIPE LENGTHS IN PLANS ARE MEASURED FROM CENTER OF STRUCTURE TO CENTER OF STRUCTURE UNLESS OTHERWISE NOTED.
2. CONTRACTOR TO FIELD VERIFY EXISTING INVERT FOR SANITARY SEWER SERVICE CONNECTIONS PRIOR TO CONSTRUCTION. CONTRACTOR SHALL NOTIFY ENGINEER OF DISCREPANCY PRIOR TO PROCEEDING.
3. ALL SANITARY SEWER PIPE SHALL HAVE BEDDING PER BEDDING DETAILS IN CONSTRUCTION DETAIL SHEETS.
4. IF ANY CONFLICTS, DISCREPANCIES, OR ANY OTHER UNSATISFACTORY CONDITIONS ARE DISCOVERED, EITHER ON THE CONSTRUCTION DOCUMENTS OR FIELD CONDITIONS, THE CONTRACTOR MUST NOTIFY THE ENGINEER IMMEDIATELY AND SHALL NOT COMMENCE FURTHER OPERATION UNTIL THE CONFLICTS, DISCREPANCIES, OR OTHER UNSATISFACTORY CONDITIONS ARE RESOLVED.

Order Plans

Drawing name: K:\ATL_Civil\4023009_Monroe_GA\CAD\PlanSheet\C4-50_PIPE_PROFILES.dwg C4-50 PIPE PROFILES Aug 06, 2019 10:57am by david.woodson

PREPARED FOR

SOUTHBOUND DEVELOPMENT GROUP

3542 VANET ROAD
ATLANTA, GA 30341
PHONE: (404) 987-2402

DESIGNED BY

Kimley»Horn

© 2019 KIMLEY-HORN AND ASSOCIATES, INC.
3930 EAST JONES BRIDGE ROAD, SUITE 350
PEACHTREE CORNERS, GEORGIA 30082
WWW.KIMLEY-HORN.COM

ISSUANCE AND REVISION DESCRIPTIONS

NO.	DATE	BY

PROJECT

SPRING STREET EXCHANGE MONROE OUTPARCEL

2130 WEST SPRING STREET, MONROE, GA 30656
LAND LOT 8, 3 DISTRICT

GSWCC NO. (LEVEL II)

0000022363

DRAWN BY

DEW

DESIGNED BY

RWB

REVIEWED BY

BLH

DATE

08/08/2019

PROJECT NO.

014023009

TITLE

PIPE PROFILES

SHEET NUMBER

C4-50



This document, together with the concepts and designs presented herein, as an instrument of service, is intended only for the specific purpose and client for which it was prepared. Reuse of and improper reliance on this document without written authorization and adaptation by Kimley-Horn and Associates, Inc. shall be without liability to Kimley-Horn and Associates, Inc.