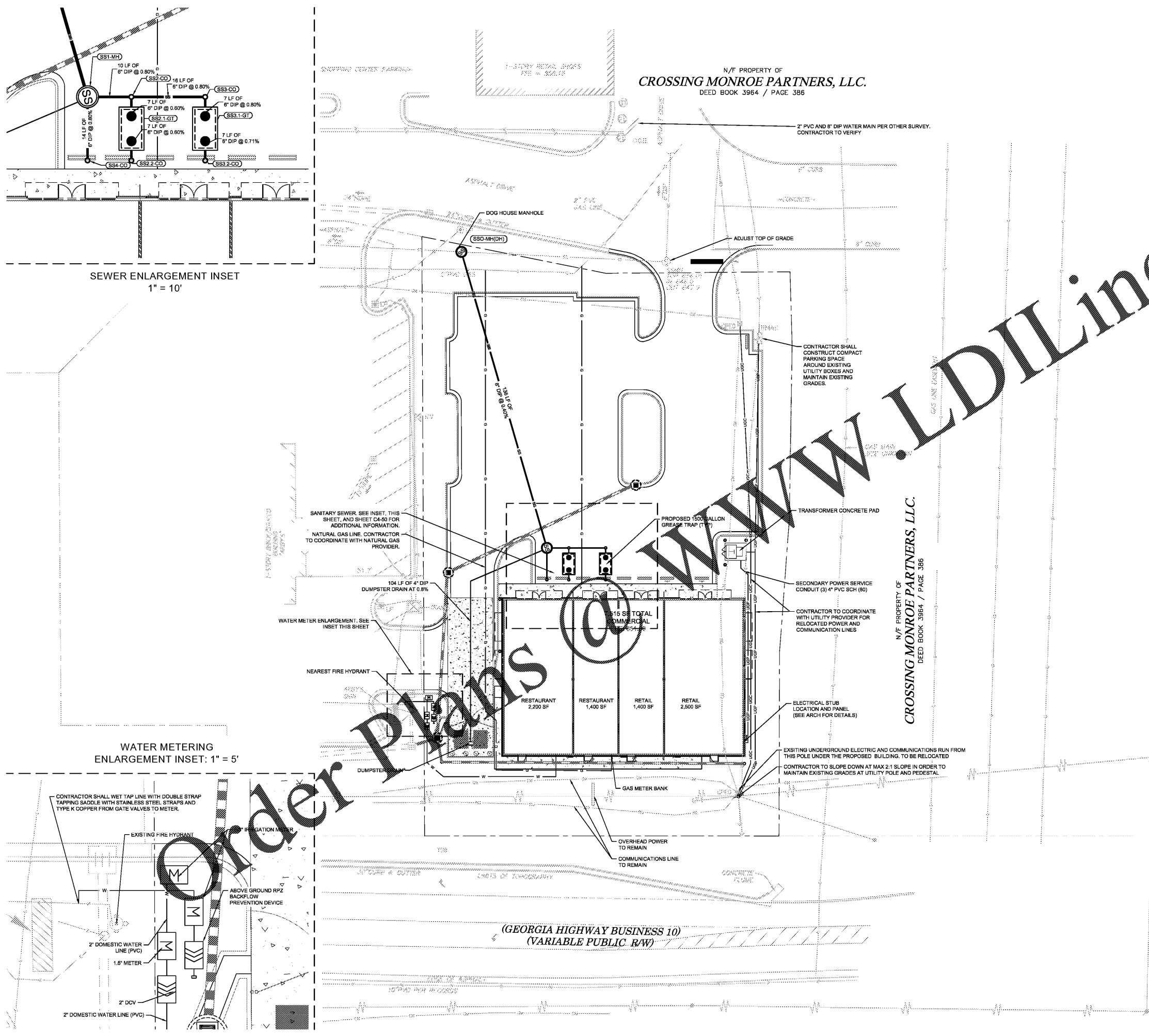


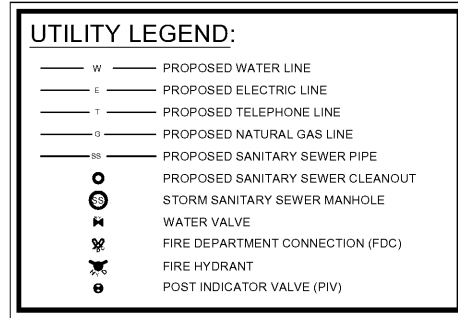
Drawing name: K:\ATL_Civil\14023009_Monroe_GA\CAD\Plan\Sheet\C4-00 - UTILITY PLAN.dwg C:\400 UTILITY PLAN Aug 06, 2019 11:48am by david.woodson



N/F PROPERTY OF
CROSSING MONROE PARTNERS, LLC.
DEED BOOK 3964 / PAGE 386

N/F PROPERTY OF
CROSSING MONROE PARTNERS, LLC.
DEED BOOK 3964 / PAGE 386

- UTILITY NOTES:**
1. ALL SANITARY SEWER CLEANOUTS IN PAVED AREAS SHALL HAVE A BRASS CAP SET FLUSH WITH THE PROPOSED GRADE.
 2. CONTRACTOR SHALL COORDINATE UTILITY CONNECTION AND REROUTING, AND ANY REMOVAL LOCATIONS WITH APPLICABLE AGENCIES.
 3. ALL UTILITIES SHALL BE CONSTRUCTED IN ACCORDANCE WITH CITY OF MONROE SANITARY SEWER AND CITY OF MONROE WATER DETAILS AND SPECIFICATIONS.
 4. ALL PIPE LENGTHS SPECIFIED IN THESE PLANS ARE THE HORIZONTAL DISTANCE AND ARE SHOWN FOR REFERENCE ONLY. IT IS THE RESPONSIBILITY OF THE CONTRACTOR TO DETERMINE ACTUAL LENGTHS BASED ON PROPOSED PIPE SLOPE. PIPE LENGTHS SHOULD BE MEASURED FROM CENTER OF STRUCTURE TO CENTER OF STRUCTURE UNLESS OTHERWISE NOTED.
 5. UTILITIES MAY EXIST WHICH ARE NOT SHOWN ON THE PLANS. THE CONTRACTOR SHALL BE RESPONSIBLE FOR CONTACTING ALL UTILITY COMPANIES HAVING UTILITIES WITHIN OR ADJACENT TO THE WORK AREA. THE CONTRACTOR SHALL HAVE THE UTILITIES FIELD LOCATED AND COORDINATE WITH THE UTILITY COMPANIES TO HAVE CONFLICTS RELOCATED WHEN NECESSARY OR ADAPTED FOR TIE-INS.
 6. ALL UTILITY CONNECTIONS END AT 5' OUTSIDE OF THE BUILDING FOOTPRINT. REFER TO ARCHITECTURAL, MECHANICAL, ELECTRICAL, AND PLUMBING PLANS FOR BUILDING LAYOUT AND INTERNAL UTILITY SERVICE.
 7. ALL ONSITE UTILITIES SHALL BE LOCATED UNDERGROUND.
 8. CONTRACTOR TO FIELD VERIFY EXISTING INVERT FOR SANITARY SEWER SERVICE CONNECTIONS PRIOR TO CONSTRUCTION. CONTRACTOR SHALL NOTIFY ENGINEER OF DISCREPANCY PRIOR TO PROCEEDING.



GEORGIA HYDRANT SERVICES, INC.
2414 Lance Ct.
LOGANVILLE, GA. 30052
(770) 466-6033

FLOW TEST REPORT

Customer: Kimley-Horn
Location: 2180 W. Spring St. Monroe, GA - S.E. of Acker's Lane 77352619
Type: Mainline, 18" Dia. 100' Run
Approximate Date of Installation: 10/20/18
Inspector: [Blank]
State Program of Test: [Blank]
Consumption Rate During Test: 100 gal./hour
If Flowmeter Used, Indicate Flowmeter Operating: [Blank]
Flow Hydrant: [Blank]
Flow Head: 50' [Blank]
Flow Rate: 50 gpm [Blank]
Flow Pressure: 20 psig [Blank]
Remarks: [Blank]
Indicate if: [Blank]

Kimley-Horn
© 2018 KIMLEY-HORN AND ASSOCIATES, INC.
3930 EAST JONES BRIDGE ROAD, SUITE 350
PEACHTREE CORNERS, GEORGIA 30082
WWW.KIMLEY-HORN.COM

SOUTHBOUND DEVELOPMENT GROUP
3542 VANET ROAD
ATLANTA, GA 30341
PHONE (404) 987-2402

NO.	ISSUANCE AND REVISION DESCRIPTIONS	DATE	BY

SPRING STREET EXCHANGE MONROE OUTPARCEL
2180 WEST SPRING STREET, MONROE, GA 30056
LAND LOT 8, 3 DISTRICT

GEORGIA
NO. 014023009
PREPARED BY
CIVIL ENGINEER
DAVID WOODSON

GSWCC NO. (LEVEL II) 0000022363
DRAWN BY DEW
DESIGNED BY RWB
REVIEWED BY BLH
DATE 08/08/2019
PROJECT NO. 014023009
TITLE
UTILITY PLAN
SHEET NUMBER
C4-00

GEORGIA811.
Utilities Protection Center, Inc.
Know what's below.
Call before you dig.

GRAPHIC SCALE IN FEET
0 10 20 40

GEORGIA811
Utilities Protection Center, Inc.
Know what's below.
Call before you dig.

This document, together with the concepts and designs presented herein, as an instrument of service, is intended only for the specific purpose and client for which it was prepared. Reuse of and improper reliance on this document without written authorization and adaptation by Kimley-Horn and Associates, Inc. shall be without liability to Kimley-Horn and Associates, Inc.