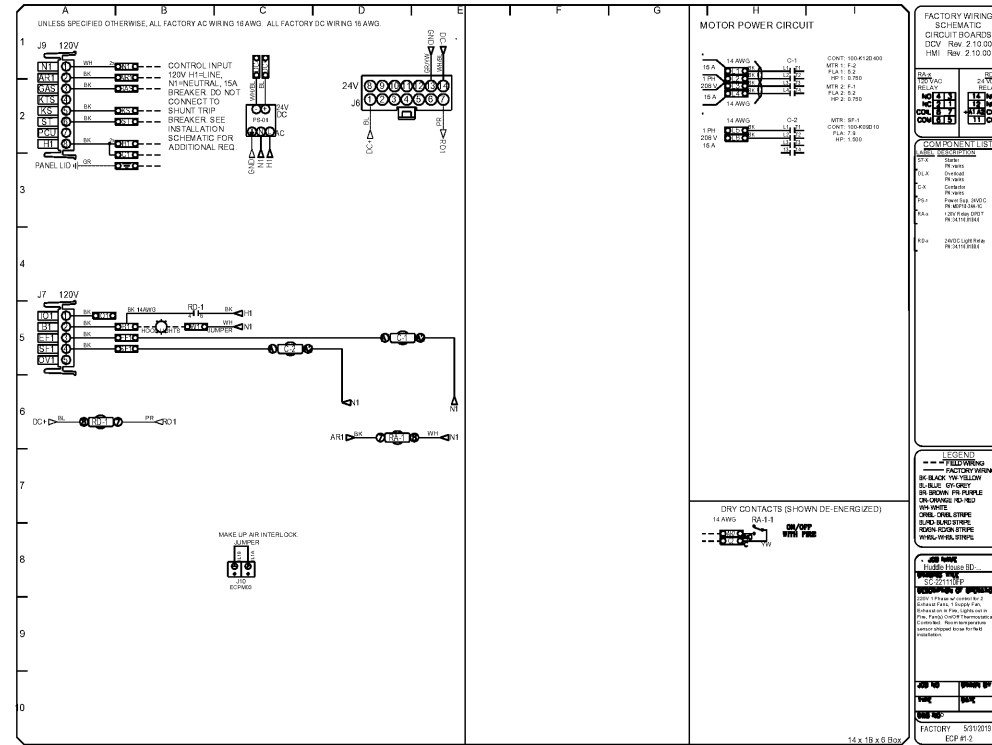


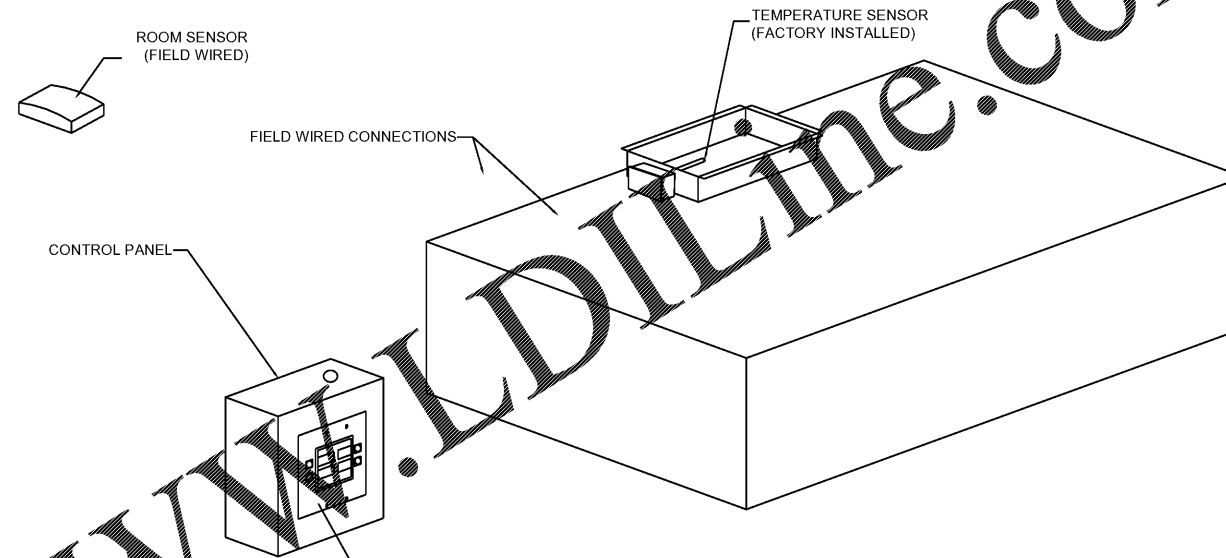
ELECTRICAL PACKAGE -- Job#3803505

NO.	TAG	PACKAGE #	LOCATION	SWITCHES		OPTION	FANS CONTROLLED					
				LOCATION	QUANTITY		FAN TAG	TYPE	#	H.P.	VOLT	FLA
1		SC-22110FP	Wall Mount In SS Box	05 - SS Wall Mount Box	1 Light		F-2	Exhaust	1	0.750	208	5.2
				02 - 1 Face Mount Right Side of Hood # 3	1 Fan		F-1	Exhaust	1	0.750	208	5.2
2		Switches					SF-1	Supply	1	1.500	208	6.7

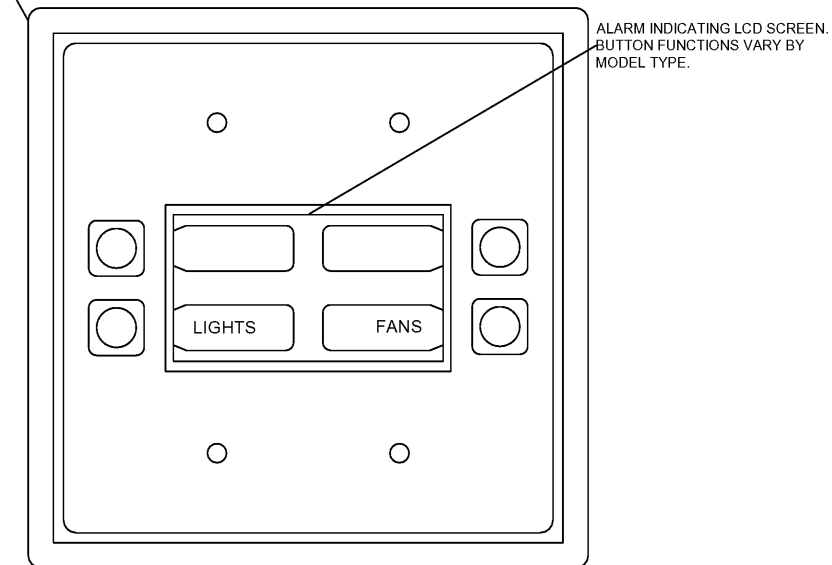


TEMPERATURE SENSOR INTERLOCK

The Temperature Sensor Interlock option complies with IMC 2006 507.2.1.1 and NFPA 96 11.1.1 by interlocking with cooking appliances through means of a heat sensor to automatically activate exhaust fans during cooking operations.

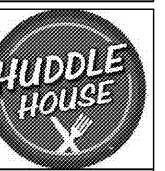


TYPICAL HOOD WITH TEMPERATURE SWITCH



ELECTRICIAN NOTES :
 All Hood/Fan/EMS/UDS/PCU electrical connections and interconnections to be provided and installed by Electrician. Electrician to provide, install and label wiring between hood lights, hood temp sensors, remote reset system microswitches, and any other component requiring an electrical connection to the Captive-Aire electrical package.
 Failure by the Electrician to make ALL required electrical connections and interconnections will result in the electrical controls not working properly. Any loss or failure as a result of electrical controls not working properly is the responsibility of the Electrician.
 Light bulbs for kitchen hoods to be provided and installed by electrician.

Order Plans @ WWW.LDILine.com



JOB NO. L1908

NORWOOD ARCHITECTS
 807 Corporate Blvd. N.W.
 Atlanta, Georgia 30318
 Ph. 678-921-0302 fax. 678-921-0301
 www.norwoodarchitects.com

HUDDLE HOUSE
 EVO 2000 RESTAURANT
 US HWY 43 RUSSELLVILLE, AL
 FRANKLIN CO. 35653

NO.	ISSUE DATE
	PERMIT SET / 2019

DRAWING NUMBER

MH103