



**SITE DETAILS**

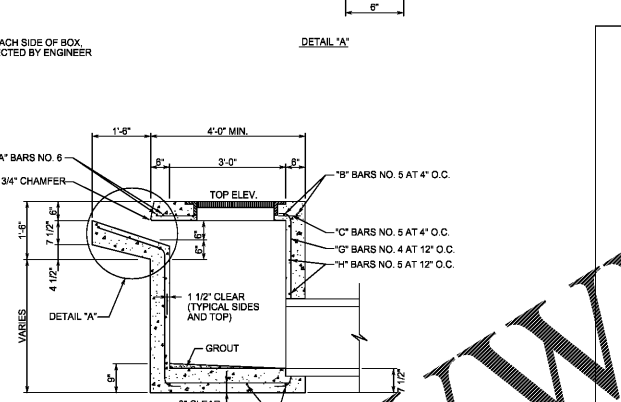
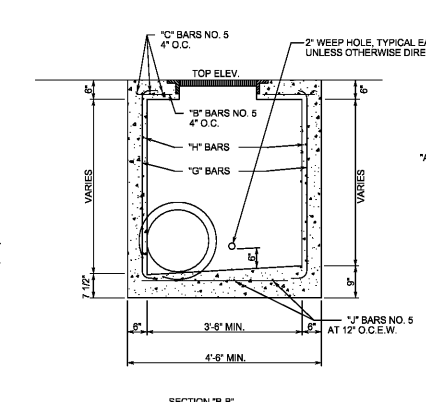
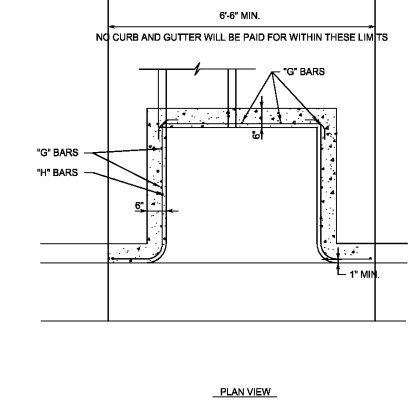
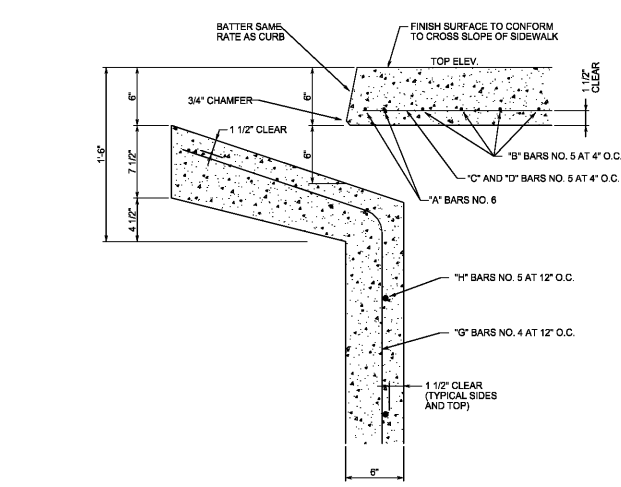
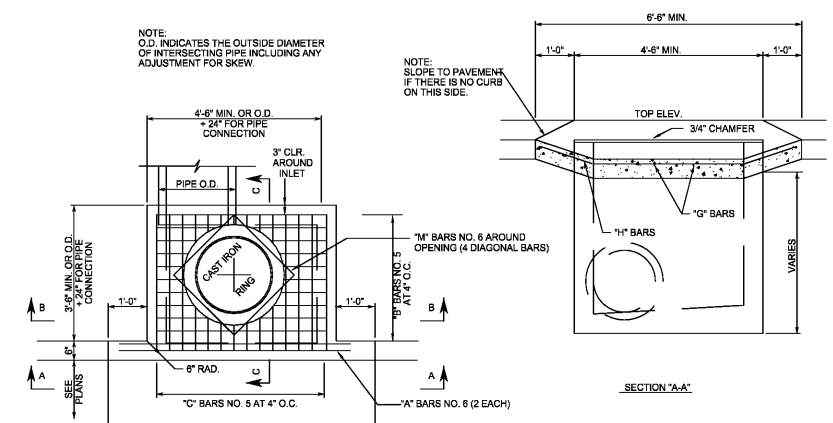
**HUDDLE HOUSE RESTAURANT**  
RUSSELLVILLE, AL  
FRANKLIN COUNTY

**ELECTRONIC FILE DISCLAIMER:**  
The official drawings are those that have been signed and sealed by the Professional Engineer/Surveyor. Information transferred electronically to clients is not necessarily a true and accurate copy of the original. Civil Group, LLC is not responsible for information on these plans in electronic form, provided verbally by email, or otherwise, unless specifically interpreted by others.

**REVISIONS:**

NO.	DATE	DESCRIPTION

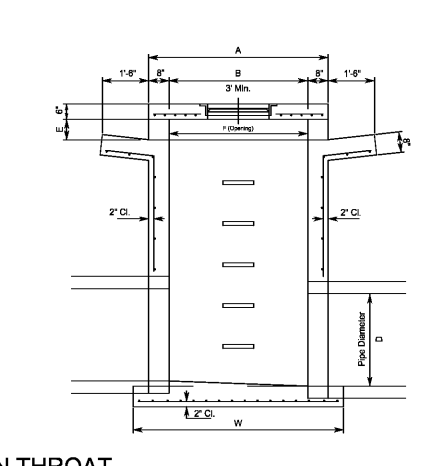
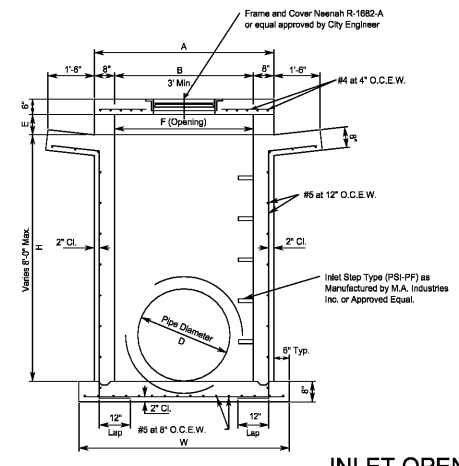
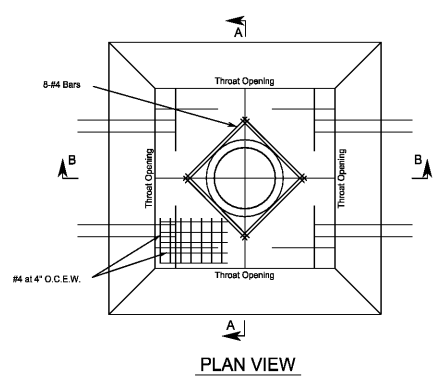
PROJECT: 23809, Smith & Draining Details  
DRAWN BY: [blank]  
CHECKED BY: [blank]  
DATE: 07/22/19  
JOB NO.: 0191486 Huddle Hse, US 43, DESIGN, ROUND, ENG  
SCALE: [blank]  
HORZ 1"= [blank] N/A  
VERT 1"= [blank] N/A



- GENERAL NOTES**
- CONCRETE ALL CONCRETE SHALL BE 3,000 PSI, 28 DAY COMPRESSIVE STRENGTH.
  - REINFORCING ALL REINFORCEMENT SHALL BE DEFORMED BAR, GRADE 60.
  - INLET WINGS WHERE THE DIRECTION OF FLOW IS FROM BOTH SIDES OF THE INLET, SIDE WING OPENINGS (AS SHOWN ON ONE SIDE ONLY) SHALL BE BUILT ON BOTH SIDES OF INLET. FOR EACH INLET SO BUILT, PAYMENT WILL BE MADE UNDER ITEM "INLETS TYPE S, (DOUBLE WING)". WHERE ONE WING ONLY IS BUILT, PAYMENT WILL BE MADE UNDER ITEM "INLETS TYPE S, (SINGLE WING)".
  - LARGE PIPE TO ACCOMMODATE LARGE DIAMETER PIPE, OR TO FIT OTHER CONDITIONS, IT MAY BE NECESSARY TO INCREASE ONE OR BOTH PLAN DIMENSIONS OF THE INLET BOX AND COVER SLAB. NO ADDITIONAL COMPENSATION WILL BE ALLOWED FOR THE CORRESPONDING INCREASE IN CONSTRUCTION MATERIALS WHERE CHANGES IN DIMENSIONS ARE REQUIRED.
  - PIPE CONNECTIONS PIPE MAY CONNECT WITH INLETS FROM ANY DIRECTION, AND AS MANY CONNECTIONS SHALL BE MADE AS ARE NECESSARY.
  - WEEP HOLES 2" MINIMUM DIAMETER WEEP HOLES SHALL BE CONSTRUCTED IN INLETS AS DIRECTED BY THE ENGINEER TO FACILITATE SUBGRADE DRAINAGE.
  - RING AND COVER SHALL CONFORM TO THE REQUIREMENTS OF CLASS 30 FOR GRAY IRON CASTING A.S.T.M. DESIGNATION A48.
  - MANHOLE STEPS MANHOLE STEPS ARE REQUIRED WHEN DIMENSION FROM BOTTOM SLAB FLOW LINE TO TOP SLAB IS GREATER THAN 4'-0". STEPS SHALL BE INSTALLED AT 1'-4" O.C. VERTICALLY.

- NOTES**
- Dimension "A" is determined by the largest diameter pipe entering the curb inlet.
  - Reinforcing required on all inlets when dimension from bottom slab flow line to top of slab is greater than 4'-0".
  - All concrete shall be class "A" and shall develop a minimum compressive strength of 3000 PSI in 28 days.
  - Reinforcing shall be intermediate grade deformed bars and shall conform to the requirements of the Standard Specifications for steel reinforced concrete reinforcement bars ASTM A-63 and deformations conforming to ASTM A-305.
  - When brick construction is used, walls will be 8" brick when "A" is less than 5'-0". Use 12" brick when "A" is more than 5'-0". Float with 1/2" mortar on both sides.
  - Provide concrete apron at throat openings.

Pipe Size	A	B & F	D	E	W
12"	4'-4"	3'-0"	12"	8"	5'-4"
15"	4'-4"	3'-0"	15"	8"	5'-4"
18"	4'-4"	3'-0"	18"	8"	5'-4"
21"	4'-8"	3'-0"	21"	8"	5'-8"
24"	4'-8"	3'-0"	24"	8"	5'-8"
30"	5'-4"	4'-0"	30"	8"	6'-4"
36"	5'-10"	4'-8"	36"	8"	6'-10"



Order Plans @ [www.LDILine.com](http://www.LDILine.com)