

JOB NO. L1908

NORWOOD ARCHITECTS
807 FORREST ST. N.W.
ATLANTA, GEORGIA 30318
PH: 678-921-0302 FAX: 678-921-0301 WWW.NORWOODARCHITECTS.COM

HUDDLE HOUSE
EVO 2000 RESTAURANT
15477 HWY 43 RUSSELLVILLE, AL
FRANKLIN CO. 35653

NO. ISSUE DATE
PERMIT SET
07/05/2019

DRAWING NUMBER
DOOR & WINDOW
TYPES AND
SCHEDULES
A600
ISSUED FOR CONSTRUCTION

DOOR SCHEDULE

DOOR #	LOCATION	DOOR MATERIAL	TYPE	WIDTH	HEIGHT	THICKNESS	FRAME	FRAME TYPE	HEAD	JAMB	THRESHOLD	DOOR FINISH	FRAME FINISH	GLAZING	HW. SET #	REMARKS		
1	ENTRY VESTIBULE	ALUM. W/ INSL. TEMPERED GLASS	A	3'-0"	7'-0"	1 3/4"	STOREFRONT	◆◆	3/A601	4,5/A601 & 6,7/A601	Y	SF-01	SF-01	INSUL. TINTED TEMPERED GLASS	HW01			
2	ENTRY VESTIBULE	ALUM. W/ INSL. TEMPERED GLASS	A	3'-0"	7'-0"	1 3/4"	STOREFRONT	◆◆	3/A601	4,5/A601 & 6,7/A601	Y	SF-01	SF-01	INSUL. TINTED TEMPERED GLASS	HW01			
3	ENTRY VESTIBULE	ALUM. W/ INSL. TEMPERED GLASS	B	3'-0"	7'-0"	1 3/4"	STOREFRONT	◆	5/A602	9,10/A601 SIM.	N/A	PT-01	SF-01	PREFIN. TEMPERED GLASS	HW02			
4	KITCHEN EXIT	HOLLOW METAL	D	3'-6"	7'-0"	1 3/4"	HOLLOW MTL.	D	8/A601	9,10/A601	Y	PT-03	EF-12	PT-03	EF-12	PEEK HOLE		
5	OFFICE	HOLLOW METAL W/ WIRE GLASS	E	2'-8"	7'-0"	1 3/4"	HOLLOW MTL.	E	13/A602	14/A602	N/A	PT-03	PT-03	PT-03	PT-03	WIRE GLASS	HW05	UNDERCUT DOOR 1"
6	MEN'S RESTROOM	WOOD	F	3'-0"	7'-0"	1 3/4"	HOLLOW MTL.	F	9/A602	10/A602	N/A	PT-01	PT-01	PT-01	PT-01	N/A	HW06	UNDERCUT DOOR 1"
7	WOMEN'S RESTROOM	WOOD	F	3'-0"	7'-0"	1 3/4"	HOLLOW MTL.	F	9/A602	10/A602	N/A	PT-01	PT-01	PT-01	PT-01	N/A	HW06	UNDERCUT DOOR 1"
8	EXIT	HOLLOW METAL	C	3'-0"	7'-0"	1 3/4"	HOLLOW MTL.	C	3/A601	9,10/A601	Y	PT-03	EF-12	PT-03	EF-12	N/A	HW03	
9	BACKBAR/COOKLINE	H.P. LAM.	G	(2) 2'-3"	3'-0" VERIFY	1"	N/A	G	-	15/A602	N/A	P.L.A.M.	P.L.A.M.	S.S.	S.S.	N/A	-	SEE NOTE #5

NOTES:

- ALL HANDLES FOR LOCK SETS OF SWING DOORS SHALL BE LEVER TYPE (SCHLAGE OR EQUAL)
- DOORS 1,2,8 AND 4 TO HAVE MASTER KEY ACCESS (MASTER KEY TO OPEN DOOR 5 ONLY)
- PROVIDE ADA APPROVED SIGNAGE AT RESTROOM DOORS; SIGNS SHALL INCORPORATE RAISED & BRAILLE CHARACTERS & SYMBOLS; INSTALL ON WALLS ADJACENT TO THE LATCH SIDE OF RESTROOM DOOR, MOUNT W/ CENTERLINE OF SIGN @ 60" ABOVE FINISHED FLOOR
- DOOR # 9: ELIASON LWP CAFE (VERIFY MOUNTING HEIGHT IN FIELD). HARDWARE IS PROVIDED / DOOR BY DOORSET.

DOOR HARDWARE SCHEDULE

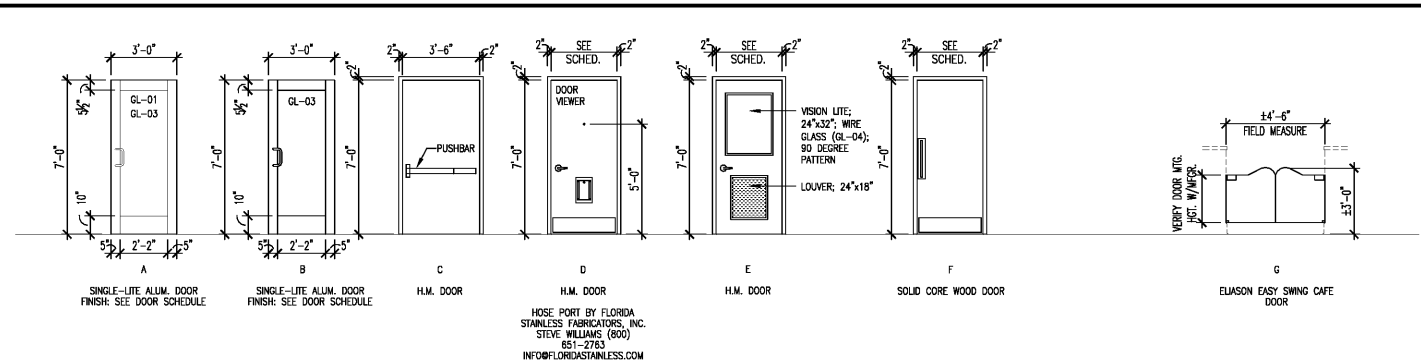
HARDWARE SET	DESCRIPTION	QTY	UNIT	MANUFACTURER
HARDWARE SET HW01 - SINGLE 3' x 7' ALUM. DOORS x ALUM. FRAME	(3) OFFSET PIVOT HINGES	OP400 (SET)	-	ALUMINUM
	(1) LOCKSET	MS1850S/INSIDE THUMB LK	-	ALUM. RITE
	(1) OFFSET PULL	PRO32x9"	US28	US ALUMINUM
	(1) PUSH BAR	PRO31	US28	US ALUMINUM
	(1) SURFACE MTD. CLOSER	4040	-	ALUM. ANOD. LC
	(1) WEATHER STRIPPING	2525C	-	NATIONAL GUARD
	(1) SNEEP	2025A	-	NATIONAL GUARD
	(1) THRESHOLD	325	-	NATIONAL GUARD
	(1) DRIP CAP	16A	-	NATIONAL GUARD
HARDWARE SET HW02 - SINGLE 3' x 7' ALUM. DOORS x ALUM. FRAME	(3) OFFSET PIVOTS	-	-	US ALUMINUM
	(1) PULL/PUSH	PRO33x	US28	US ALUMINUM
	(1) CONCEALED LAMP	CL301x 105 DEGREE CENTER HUNG	-	US ALUMINUM
	(1) DOOR STOP	438 B	US260	MES
HARDWARE SET HW03 - SINGLE 3'-6" x 7' H.M. DOOR x H.M. FRAME	(3) FULL MORTISE HINGES	BB1168 4 1/2" x 4 1/2" x NRP	260	HAGER
	(1) EXIT DEVICE	GUARD-X EXIT ALARM	-	VON DUPRIN
	(1) CLOSER	CLP-8301	-	NORTON
	(1) KICKPLATE	8400 x 12" x 40"	US260	MES
	(1) WEATHERSTRIP	2525C	-	NATIONAL GUARD
	(1) THRESHOLD	315 x 42"	-	NATIONAL GUARD
HARDWARE SET HW04 - SINGLE 3'-6" x 7' H.M. DOOR x H.M. FRAME	(1) CONTINUOUS HINGES	CM83ND GEAR HINGE	-	PEMKO
	(1) EXIT DEVICE	GUARD-X EXIT ALARM	-	VON DUPRIN
	(1) CLOSER	CLP-8301	-	NORTON
	(1) KICKPLATE	8400 x 12" x 40"	US260	MES
	(1) WEATHER STRIPPING	2525C	-	NATIONAL GUARD
	(1) THRESHOLD	315 x 36"	-	NATIONAL GUARD
	(1) DOOR VIEWER	698	US260	MES
	(1) BOTTOM SEAL	2029A	-	NATIONAL GUARD

GENERAL NOTES

- PROVIDE DOOR STOPS AT ALL DOORS & WALL BUMPERS WHERE REQUIRED AGAINST ADJACENT WALL
- ALL H.M. DOOR FRAMES (EXTERIOR & INTERIOR) TO BE 16 GA. GALVANIZED WHERE EXPOSED TO WEATHER (U.N.O.)
- ALL HOLLOW METAL DOORS TO BE 18 GA. GALV. FLUSH; EXTERIOR DOORS TO BE INSULATED
- SEE FINISH SCHEDULE FOR PAINT & STAIN COLORS & BRANDS
- ALL DOOR CLOSERS SHALL BE THRU-BOLTED
- ALL SPACERS IN ALUMINUM STOREFRONT GLASS SHALL MATCH FRAME COLOR

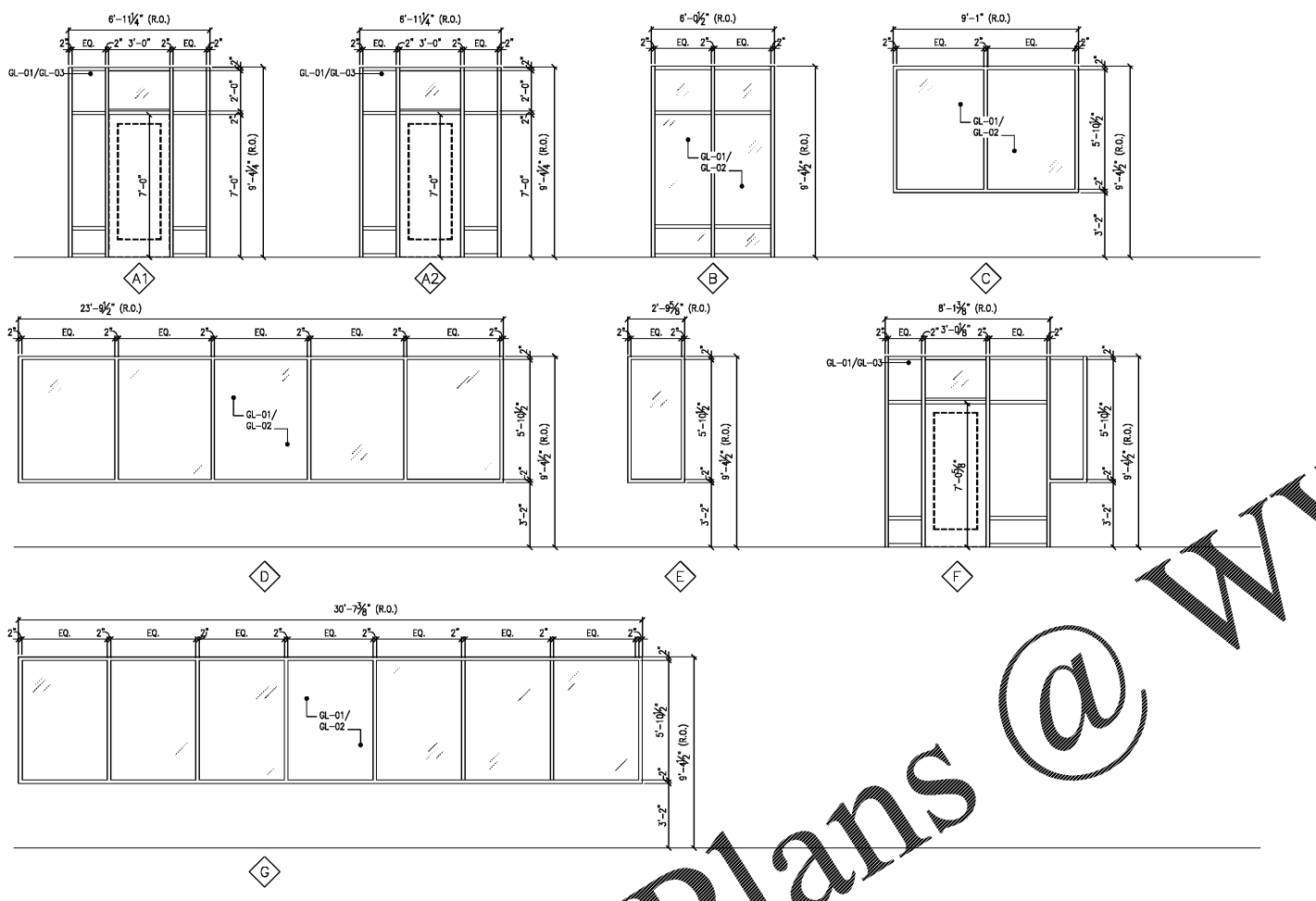
GLAZING NOTES

- GL-01 CLEAR WINDOW GLASS INSULATED LOW-E TRULITE
- GL-02 CLEAR, FLOAT GLASS
- GL-03 CLEAR, TEMPERED GLASS
- GL-04 WIRE GLASS, 90 DEGREE PATTERN U.N.O.



DOOR/FRAME ELEVATIONS

SCALE: 1/4"=1'-0"



WINDOW ELEVATIONS

SCALE: 1/4"=1'-0"

Order Plans @ WWW.IDLINE.COM