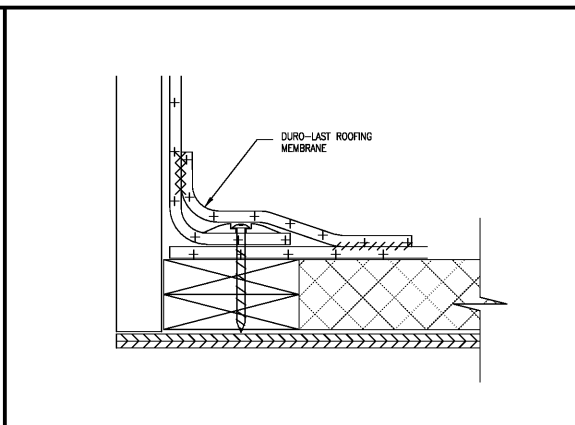
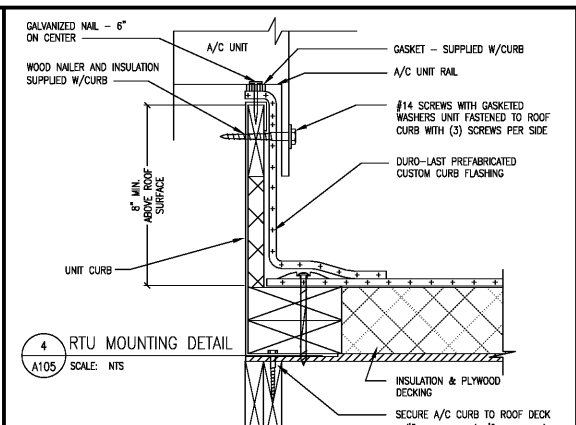


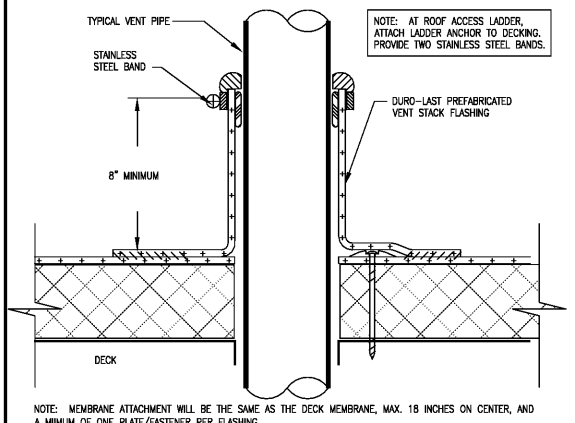
2 COPING SPLICE PLATE DETAIL
SCALE: 1/4"=1'-0"



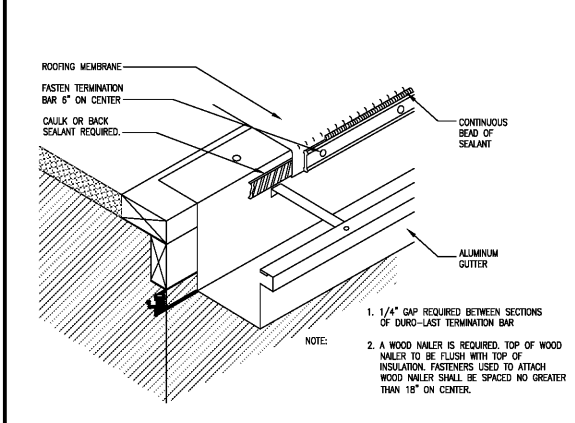
3 STANDARD BASE FLASHING DETAIL
SCALE: N.T.S.



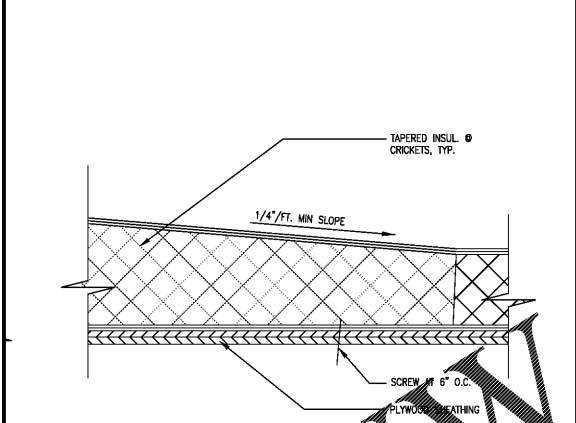
3 STANDARD BASE FLASHING DETAIL
SCALE: N.T.S.



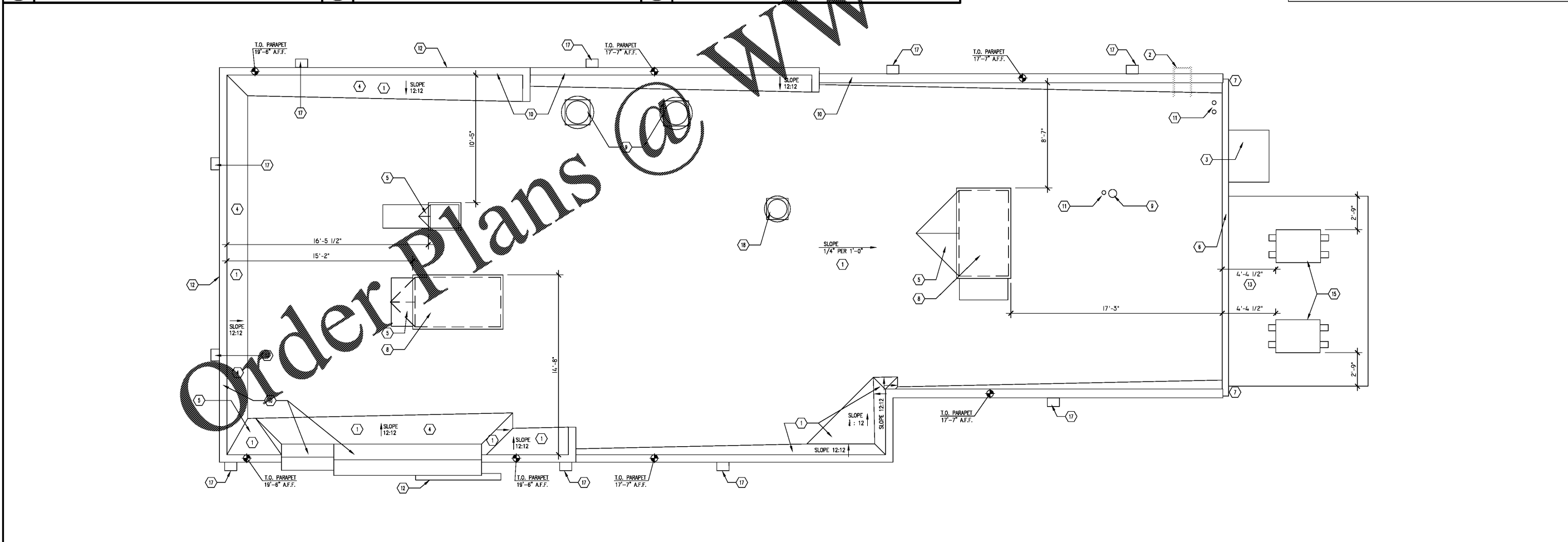
5 TYP. ROUND PENETRATION DETAIL
SCALE: 1/4"=1'-0"



6 STANDARD BASE FLASHING DETAIL
SCALE: N.T.S.



7 TYP. CRICKET DETAIL
SCALE: N.T.S.

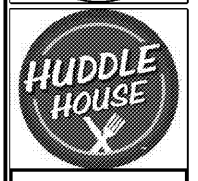
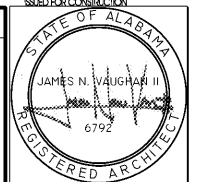


1 ROOF PLAN
SCALE: 1/4"=1'-0"

GENERAL NOTES

1. ROOFING SUBCONTRACTOR TO COORDINATE LOCATION OF H.V.A.C. UNITS & ROOF TOP ACCESSORIES W/ STRUCTURAL, MECHANICAL & ELECTRICAL DWGS. FOR LAY-OUT/PLACEMENT OF ROOF BOARD INSULATION & SUBSEQUENT INSTALLATION IN ORDER TO AVOID PONDING WATER CONDITIONS ATTRIBUTABLE TO BOARD LAY-OUT ISSUES
2. ROOF SYSTEMS SPECIFIED SHALL BE APPLIED ONLY BY MFR. APPROVED APPLICATOR IN ORDER TO MEET WARRANTY REQUIREMENTS
3. HVAC CONDENSATE LINES TO TERMINATE INTO GUTTER. COORD. W/ LOCAL AHJ TO DETERMINE IF CONDENSATE LINES ARE REQUIRED TO THE INTD SANITARY
4. ALL CURBS FOR ROOF TOP EQUIPMENT TO BE FLASHED USING PRE-FABRICATED CUSTOM CURB FLASHING BY THE ROOFING MFR.
5. ALL FLASHING CEMENTS, PRODUCTS & ACCESSORIES SHALL BE SUPPLIED & APPROVED BY ROOFING MFR.
6. RIDIC INSULATION TO BE MECHANICALLY FASTENED PER FACTORY MUTUAL-28
7. THE ROOF STRUCTURE SHALL NOT BE USED FOR STOCKING OF EQUIPMENT OR MATERIALS UNLESS APPROVED BY THE ARCHITECT, STRUCTURAL ENGINEER & THE JOIST MFR.
8. COORDINATE ROOF ELEVATIONS W/ STRUCTURAL DWGS.
9. ALL ROOFING DETAILS TO BE VERIFIED & COORDINATED W/ MFR'S. RECOMMENDED INSTALLATION PROCEDURES, SPECIFICATIONS & WARRANTIES

- KEY NOTES**
- 1 DURO-LAST SINGLE PLY WHITE 45 MIL POLYURETHANE ROOFING SYSTEM INSTALLED OVER 1/2\"/>
 - 2 ROOF LADDER
 - 3 PRE-FIN. MTL. RAINING/CANOPY BY VENDOR, SIGNAGE MANUFACTURER
 - 4 PARAPET BRACING; SEE STRUCT. DWGS. FOR ADDITIONAL INFO.
 - 5 TYP. OF CRICKET, SLOPE EQUAL TO ROOF
 - 6 6"x6" PRE-FABRICATED CONT. ALUMINUM GUTTER
 - 7 4"x6" (MIN.) DOWNSPOUT BELOW (TYP. OF 2)
 - 8 ROOFTOP UNIT
 - 9 EXHAUST FAN
 - 10 PRE-FIN. MTL. PARAPET COPING/CAP
 - 11 VENT THRU ROOF (V.T.R.)
 - 12 HUDDLE HOUSE SIGN (BELOW)
 - 13 WALK-IN BOX (BELOW)
 - 14 FLASHING OVERLAP/JOINT LOCATION
 - 15 WALK-IN MECHANICAL EQUIPMENT
 - 16 RTU GAS SUPPLY PIPE PENETRATION
 - 17 EXTERIOR FLOOD LIGHT FIXTURE
 - 18 DISHWASHER HOOD EXHAUST OPTION
 - 19 TOWER FLOOD LIGHT



JOB NO. L1908

NORWOOD ARCHITECTS
807 FORREST ST. N.W.
ATLANTA, GEORGIA 30318
PH: 478-921-0302 FAX: 478-921-0301 www.norwoodarchitect.com

HUDDLE HOUSE
EVO 2000 RESTAURANT
15477 HWY 43 RUSSELLVILLE, AL
FRANKLIN CO. 35653

NO.	ISSUE DATE
	PERMIT SET 07/05/2019

DRAWING NUMBER
ROOF PLAN & DETAILS
A105