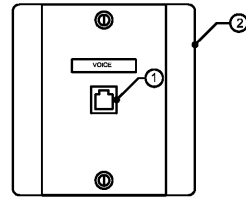


TELECOM GROUNDING BUSBAR
SCALE: NONE

NOTES:
(TELECOM GROUNDING BUSBAR DETAIL ONLY)

- 1 ELECTRICAL & TELECOM ROOM COPPER GROUND BAR, 1/4" X 4" X 10", PER J-STD-607-A.
- 2 STANDOFF BRACKET ASSEMBLY WITH INSULATORS, TYP FOR 2.
- 3 LOCK WASHER, TYP FOR 2.
- 4 A CONTINUOUS #3/0 GREEN INSULATED CONDUCTOR SHALL BE RUN FROM MAIN SYSTEM GROUND BAR (MSGB) TO MAIN TELECOM ROOM GROUND BAR (TMGB).

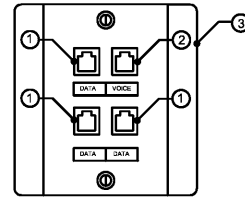


VOICE OUTLET
SCALE: NONE

- A. ALL NEW VOICE AND DATA OUTLETS SHALL BE CATEGORY-6, 8-POSITION RJ-45 NON-KEYED.
- B. PROVIDE 1-1/4" INCH CONDUIT FOR ALL VOICE OUTLETS AND VOICE CABLES TO THE CABLE TRAY. J-HOOKS ARE PERMISSIBLE FOR CABLES ROUTED FROM BASKET TRAY TO EACH VOICE CABLE DROP CONDUIT.
- C. PROVIDE UNSHIELDED TWISTED PAIR 24 AWG WA CABLE FROM EACH JACK TO I.A.W. EIA/TIA 568 AND 606.
- D. ALL OUTLETS IN PATIENT AREAS SHALL BE INSTALLED WITH TAMPER RESISTANT SCREWS.

NOTES:
(VOICE OUTLET DETAIL ONLY)

- 1 PROVIDE WHITE RJ-45 CATEGORY-6 DATA JACK. PROVIDE LABEL PER APPLICABLE VA STANDARD(S).
- 2 PROVIDE 4-11/16" SQ. X 2-1/8" BOX WITH SINGLE-GANG RING AND WALL PHONE MOUNTING FACEPLATE. MOUNT AT 18" AFF UON.

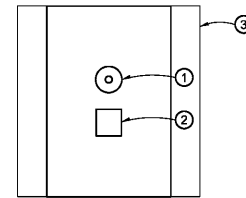


DATAVOICE OUTLET
SCALE: NONE

- A. NEW DATA OUTLETS SHALL BE COLOR COORDINATED QUAD CONNECTORS WITHIN A QUAD PLEX FLUSH MOUNTED FACEPLATE. EACH CABLE SHALL HAVE A UNIQUE COLOR AS INDICATED IN THIS DETAIL.
- B. PROVIDE 1-1/4" INCH CONDUIT FOR ALL DATA OUTLETS AND DATA CABLES TO THE BASKET TRAY. J-HOOKS ARE PERMISSIBLE FOR CABLES ROUTED FROM BASKET TRAY TO EACH DATA CABLE DROP CONDUIT.
- C. PROVIDE UNSHIELDED TWISTED PAIR 24 AWG CAT-6 CABLE FROM EACH JACK TO I.A.W. EIA/TIA 568 AND 606.
- D. ALL OUTLETS IN PATIENT AREAS SHALL BE INSTALLED WITH TAMPER RESISTANT SCREWS.

NOTES:
(DATAVOICE OUTLET DETAIL ONLY)

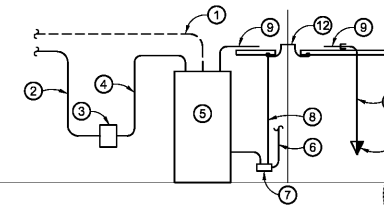
- 1 PROVIDE BLUE RJ-45 CAT-6 DATA JACK. PROVIDE LABEL.
- 2 PROVIDE WHITE RJ-45 CAT-6 DATA JACK. PROVIDE LABEL.
- 3 PROVIDE 4-11/16" SQ. X 2-1/8" BOX WITH SINGLE-GANG RING AND FACEPLATE.



TELECOMMUNICATIONS OUTLET CABLE TV OUTLET
SCALE: NONE

NOTES:
(TYPICAL CABLE TV DETAIL ONLY)

- 1 CABLE TV FEMALE F CONNECTOR.
- 2 NURSE CALL PATIENT STATION JACK. COORDINATE TYPE WITH OWNER. PROVIDE LABEL PER VA.
- 3 4-11/16" SQ. X 2-1/8" BOX WITH SINGLE GANG RING AND FACEPLATE.



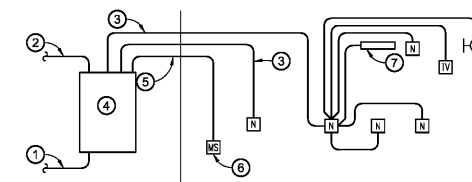
TELECOMMUNICATIONS RISER DIAGRAM
SCALE: NONE

- 1 EXISTING 12 STRAND 62.5/125 MM FIBER OPTIC BACKBONE CABLE. TERMINATE FIBER ON 12 PORT LC PATCH PANEL.
- 2 100 PAIR COPPER BACKBONE RISER RATED CMR CAT 3 CABLE IN 2" CONDUIT TO 110 PUNCH DOWN BLOCKS IN ROOM L2A2.
- 3 110 CAT 6 PUNCH DOWN BLOCKS.
- 4 CAT 6 PATCH CABLES TO VOICE PATCH PANELS.
- 5 48 TWO PORT TELECOMMUNICATIONS RACK WITH 19" MOUNTING RAIL AND 6" X 9" VERTICAL AND HORIZONTAL CABLE MANAGEMENT EACH SIDE.
- 6 18 AWG COPPER GROUND CONDUCTOR TO THE PANELBOARD LNS-2A GROUND BAR.
- 7 TELECOMMUNICATIONS GROUND BAR (TGB).
- 8 #6 AWG GREEN INSULATED BONDING CONDUCTOR. BOND ALL METAL COMPONENT AND STRUCTURAL MEMBERS IN THE TR.
- 9 CAT 6 HORIZONTAL CABLE IN CABLE TRAY.
- 10 TELECOMMUNICATIONS OUTLET WITH QUANTITY OF CAT 6 JACKS AS INDICATED ON PLANS.
- 11 1 CAT 6 CABLE FOR EACH JACK TO PATCH PANEL IN TELECOMMUNICATIONS ROOM. 1" CONDUIT TO ABOVE CEILING WITH ELBOW. SEE TELECOMMUNICATIONS OUTLETS DETAIL ON THIS SHEET.
- 12 4" THROUGH-WALL CONDUIT WITH INSULATED BUSHINGS ON BOTH ENDS.

MATV RISER DIAGRAM
SCALE: NONE

NOTES:
(MATV RISER DIAGRAM ONLY)

- 1 EXISTING COAX CABLE.
- 2 PROVIDE RG-6 COAX CABLE FROM SPLITTER TO OUTLET. PROVIDE F CONNECTOR AT EACH OUTLET. TEST CABLE FOR CONTINUITY.
- 3 PROVIDE SPLITTER, AND AMPLIFIER AS NECESSARY TO SERVE JACKS SHOWN ON EY101.



TYPICAL NURSE CALL RISER DIAGRAM
SCALE: NONE

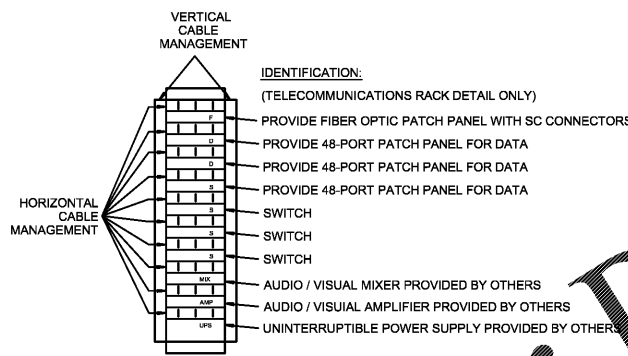
- A. NURSE CALL RISER DIAGRAM IS SHOWN FOR REFERENCE ONLY. LOCATIONS AND QUANTITIES MUST BE AS SHOWN ON THE FLOOR PLAN.
- B. ALL WIRING MUST BE AS RECOMMENDED BY EQUIPMENT MANUFACTURER.
- C. ALL CONDUITS SHOWN ON THIS RISER ARE 3/4".

NOTES:
(TELECOMMUNICATIONS RISER DIAGRAM ONLY)

- 1 EXISTING 12 STRAND 62.5/125 MM FIBER OPTIC BACKBONE CABLE. TERMINATE FIBER ON 12 PORT LC PATCH PANEL.
- 2 100 PAIR COPPER BACKBONE RISER RATED CMR CAT 3 CABLE IN 2" CONDUIT TO 110 PUNCH DOWN BLOCKS IN ROOM L2A2.
- 3 110 CAT 6 PUNCH DOWN BLOCKS.
- 4 CAT 6 PATCH CABLES TO VOICE PATCH PANELS.
- 5 48 TWO PORT TELECOMMUNICATIONS RACK WITH 19" MOUNTING RAIL AND 6" X 9" VERTICAL AND HORIZONTAL CABLE MANAGEMENT EACH SIDE.
- 6 18 AWG COPPER GROUND CONDUCTOR TO THE PANELBOARD LNS-2A GROUND BAR.
- 7 TELECOMMUNICATIONS GROUND BAR (TGB).
- 8 #6 AWG GREEN INSULATED BONDING CONDUCTOR. BOND ALL METAL COMPONENT AND STRUCTURAL MEMBERS IN THE TR.
- 9 CAT 6 HORIZONTAL CABLE IN CABLE TRAY.
- 10 TELECOMMUNICATIONS OUTLET WITH QUANTITY OF CAT 6 JACKS AS INDICATED ON PLANS.
- 11 1 CAT 6 CABLE FOR EACH JACK TO PATCH PANEL IN TELECOMMUNICATIONS ROOM. 1" CONDUIT TO ABOVE CEILING WITH ELBOW. SEE TELECOMMUNICATIONS OUTLETS DETAIL ON THIS SHEET.
- 12 4" THROUGH-WALL CONDUIT WITH INSULATED BUSHINGS ON BOTH ENDS.

NOTES:
(TYPICAL NURSE CALL RISER DIAGRAM ONLY)

- 1 120 VAC TO POWER THE EQUIPMENT.
- 2 PROVIDE ONE CAT6 FROM NEW LOCAL CONTROL PANEL TO DATA SWITCH IN SAME ROOM. COORDINATE WITH VA IT DEPT. FOR TERMINATION PORT ON SWITCH.
- 3 LOW VOLTAGE POWER CABLE AND CAT 6 CABLE IN SAME CONDUIT.
- 4 LOCAL CONTROL PANEL.
- 5 MASTER STATION CABLING IN CONDUIT.
- 6 OUTLET AT LOCATION OF THE MASTER STATION. PROVIDE CONNECTION FROM OUTLET TO MASTER STATION.
- 7 PATIENT ROOM LIGHT FIXTURE OVER BED.



TELECOM RACK DETAIL
SCALE: NONE

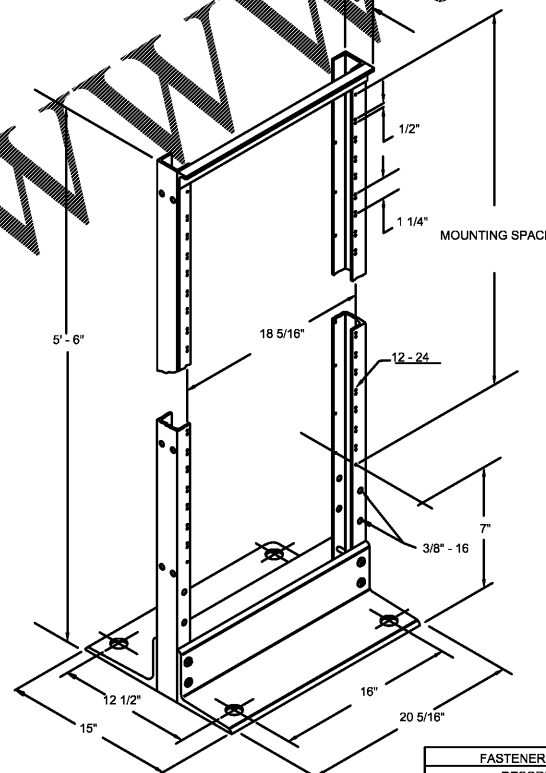
- A. ALL COMPONENTS AND TERMINATIONS BY THE CONTRACTOR EXCEPT OWNER EQUIPMENT.
- B. PROVIDE 48 PORT PATCH PANELS AS REQUIRED PER DROPS SHOWN PLUS 25% FOR FUTURE.
- C. PROVIDE FLOOR MOUNTED TELECOMMUNICATIONS RACK COMPLETE WITH WIRE MANAGEMENT AND POWER PLUG STRIPS WITH 12" CORD MINIMUM

DATAVOICE OUTLET AND RACEWAY RECEPTACLE WIRING DETAIL
SCALE: NONE

- A. PROVIDE ONE CAT-6 CABLE DROP PER OUTLET JACK. REFER TO VOICE OUTLET AND DATAVOICE OUTLET FOR EXACT NUMBER OF JACKS PER OUTLET.
- B. PROVIDE 1-1/4" INCH CONDUIT FOR TELECOM CABLE DROPS.

NOTES:
(RACEWAY RECEPTACLE WIRING DETAIL ONLY)

- 1 CONDUIT BUSHING (TYPICAL).
- 2 CORRIDOR CABLE TRAY.
- 3 TYPICAL BOND #6 TO CONDUIT AND CABLE TRAY. SEE DETAIL ON THIS SHEET.
- 4 ACCESSIBLE CEILING REFERENCE.
- 5 PROVIDE 1-1/4" CONDUIT WITH 1 CAT-6 CABLE PER JACK TO PATCH PANEL IN TELECOM ROOM. PER PLANS ON SHEETS EY101 AND DETAILS ON THIS SHEET.
- 6 SEE TYPICAL VOICE AND DATA OUTLET DETAILS ON THIS SHEET.



TELECOM RACK HARDWARE DETAIL
SCALE: NONE

| FASTENERS SUPPLIED | DESCRIPTION |
|--------------------|-------------|
| 5/16"-18 X 4 1/2" | H.H.C.S. |
| 5/16"-18 X 1" | H.H.M.S. |
| 5/16"-18 | HEX NUT |
| 5/16" | FLAT WASHER |
| 5/16" | LOCK WASHER |

| Revisions: | Date: |
|------------|-------|
| | |
| | |
| | |
| | |

CONSULTANT

CLARK NEXSEN

440 Martin Luther King Jr. Blvd
Macon, GA 31201
478.743.8415 Fax: 478.743.8239
www.clarknexsen.com

ARCHITECT/ENGINEER OF RECORD

TOLAND MIZELL MOLNAR

590 MEANS STREET NW
STE. 200
ATLANTA, GA 30318

STAMP

GEORGIA REGISTERED PROFESSIONAL ARCHITECT

NO. 043850

DATE 07/2019

NEW SAM

Office of Construction and Facilities Management

VA U.S. Department of Veterans Affairs

Drawing Title

SPECIAL SYSTEMS DETAILS

Approved: Project Director

Phase

FINAL SUBMITTAL

FULLY SPRINKLERED

Project Title

RENOVATE GERIATRIC-MED-PSYCH INPATIENT 5TH FLOOR

Location

Atlanta VA Medical Center - Atlanta, Ga.

Issue Date

06-07-2019

Checked

-

Drawn

-

Project Number

508-17-101

Building Number

Bldg C: Main Tower

Drawing Number

ET501