

**MEDICAL GAS AND VACUUM ALARM PANEL SCHEDULE**

LOCATION	TYPE OF PANEL	GAGES	SERVICE INDICATED LIGHTS
FIFTH FLOOR GERIATRIC-MED-PSYC NURSE STATION 5C120	AREA (ZONE) ALARM PANEL 'A'	YES	MEDICAL AIR LINE PRESSURE ABNORMAL. OXYGEN LINE PRESSURE ABNORMAL. MEDICAL VACUUM LINE LOW. TEST BUTTON. SILENCE BUTTON.

**NOTES:**

- DIGITAL LCD AREA ALARM SYSTEM PANELS DESIGN BASIS: MANUFACTURER: AMICO, MODEL AAAR-U-AOV OR A3AR-U-OAV.
- REFER TO DRAWINGS FOR LOCATION OF ALARM PANELS.

**MEDICAL GAS AND VACUUM VALVE BOX SCHEDULE**

MARK	GAS TYPE	VALVE SIZE INCHES	PRESSURE	DESIGN SCFM	REMARKS
VB-1	MEDICAL AIR OXYGEN MEDICAL VACUUM	1 1 1-1/2	55 PSI 55 PSI 19inHgV	126.0 126.0 54.0	1 AND 2

**NOTES:**

- MULTIPLE SENSOR INDICATOR PANEL COMBO UNIT DESIGN BASIS: MANUFACTURER: AMICO, MODEL ZIU4P335. ZONE INDICATOR PANEL BOXES SHALL BE AN AMICO ALERT-1 SERIES.
- REFER TO DRAWINGS FOR LOCATION OF ZONE VALVE BOX.

**DOMESTIC WATER BRANCH LENGTH SCHEDULE**

SIZE INCH	TEMPERATURE	VOLUME			FLUSH VALVE WSFU	MAXIMUM PIPE LENGTH FEET
		LITERS	OUNCES	GALLONS		
3/8	HOT	0.35	12	0.0938	PUBLIC LAVATORY LOW FLOW LAVATORY	16.38
3/8	HOT	0.35	12	0.0938	PRIVATE LAVATORY PATIENT AND EXAM ROOMS	9.38
1/2	HOT	0.70	24	0.1875	SINKS AND SHOWER	18.75
3/8	COLD	0.35	12	0.0938	PUBLIC LAVATORY LOW FLOW LAVATORY	16.38
3/8	COLD	0.35	12	0.0938	PRIVATE LAVATORY PATIENT AND EXAM ROOMS	9.38
3/8	COLD	0.70	24	0.1875	ICE MACHINE	9.38
1/2	COLD	0.70	24	0.1875	SINKS AND SHOWER	18.75
3/4	COLD	1.90	64	0.5000	URINALS	21.74
1	COLD	4.85	164	1.2800	TOILETS	31.22

**NOTES:**

- MAXIMUM DEAD END LENGTH IS TWO (2) PIPE DIAMETER OFF THE MAIN.

**PLUMBING FIXTURE UNIT CALCULATION**

MARK	FIXTURE	QTY	DRAINAGE FU		DOMESTIC WATER FU						
			EACH	TOTAL	COLD WATER EACH	COLD WATER TOTAL	HOT WATER EACH	HOT WATER TOTAL	WATER SUPPLY EACH	WATER SUPPLY TOTAL	
P-101	WATER CLOSET, FLUSH VALVE, PUBLIC	4	4.00	16.00	10.00	40.00	-	-	10.00	40.00	
P-418	LAVATORY, PUBLIC	5	1.00	5.00	1.50	7.50	1.50	7.50	2.00	10.00	
P-502	SERVICE SINK	2	2.00	4.00	3.00	6.00	3.00	6.00	4.00	8.00	
P-505	CLINICAL SERVICE SINK	3	5.00	15.00	10.00	30.00	3.00	9.00	10.00	30.00	
P-524	SINK, CRS	4	3.00	12.00	1.50	6.00	1.50	6.00	2.00	8.00	
P-528	SINK, CRS	4	3.00	12.00	1.50	6.00	1.50	6.00	2.00	8.00	
P-529	SINK, CRS	1	3.00	3.00	1.50	1.50	1.50	1.50	2.00	2.00	
P-701	SHOWER, PUBLIC	1	2.00	2.00	3.00	3.00	3.00	3.00	4.00	4.00	
P-708	EMERGENCY EYE & FACE WASH	3	-	-	-	-	-	-	-	-	
P-808	WASHING MACHINE SUPPLY AND DRAIN UNIT	1	3.00	3.00	3.00	3.00	3.00	3.00	4.00	4.00	
P-910	LIGATURE RESISTANT WATER CLOSET, FLUSH VALVE, PUBLIC	24	4.00	96.00	10.00	240.00	-	-	10.00	240.00	
P-935	LIGATURE RESISTANT LAVATORY, PUBLIC	36	1.00	36.00	1.50	54.00	1.50	54.00	2.00	72.00	
P-940	LIGATURE RESISTANT SHOWER, PUBLIC	18	2.00	36.00	3.00	54.00	3.00	54.00	4.00	72.00	
P-960	LIGATURE RESISTANT ELECTRIC WATER COOLER BOTTLE FILLER STATION	3	0.50	1.50	0.25	0.75	-	-	0.25	0.75	
			241.50	45	198.75	43.00	150.00	498.75			

DOMESTIC WATER SUPPLY 498.75 WSFU 43.00 GPM  
 DOMESTIC COLD WATER SUPPLY 198.75 WSFU 43.00 GPM  
 DOMESTIC HOT WATER SUPPLY 150.00 WSFU 43.00 GPM  
 PIPE SIZE: DRAINAGE 2-1/2" DCWS - 2" DHWS

**DOMESTIC WATER CALCULATIONS**

SIZE INCH	FLUSH VALVE WSFU	FLUSH TANK WSFU
1/2"	2	0.25
3/4"	3	1
1"	6	2
1-1/4"	14	9
1-1/2"	38	80
2"	62	180
2-1/2"	90	300
3"	125	500

**NOTES:**

- FIXTURE UNIT VALUES BASED ON THE INTERNATIONAL PLUMBING CODE SIZING CHARTS.
- MAX VELOCITY FOR HOT WATER - 5 FT/SECOND, FOR COLD WATER 6 FT/SECOND.

**THERMOSTATIC TYPE PRESSURE BALANCE MIXING VALVE SCHEDULE**

MARK	PIPING		PRESSURE DROP PSI	CAPACITY GPM	TEMPERATURE			REMARKS
	INLET	OUTLET			COLD	HOT	TEMPERED	
MV-1	3/8	3/8	5	0.5	50°F	130°F	110°F	1, 3, AND 4
MV-2	1/2	1/2	5	1	50°F	130°F	110°F	2, 3, AND 4

**NOTES:**

- DESIGN BASIS: POWERS LFG480-10 OR APPROVED EQUAL.
- DESIGN BASIS: POWERS LFG480-01 OR APPROVED EQUAL.
- EXPOSED, ROUGH BRONZE CHROME PLATED FINISH, SIDE CONNECTIONS, TOP OUTLET.
- MINIMUM FLOW SHALL BE 0.25 GPM.

**SHOCK ABSORBER SCHEDULE**

ABSORBOTRON TYPE NO.	5005	5010	5020	5030	5040	5050
P.D.I. SYMBOL	A	B	C	D	E	F
FIXTURE UNIT RATING	1-11	12-32	33-60	61-113	114-154	155-330

**NOTES:**

- J.R. SMITH MANUFACTURING COMPANY NUMBER SHOWN. JOSAM, ZURN, OR APPROVED EQUAL IS ACCEPTABLE.

**PLUMBING FIXTURE SCHEDULE**

MARK	FIXTURE	DFU	DCWS WSFU	DHWS WSFU	TOTAL WSFU	CONNECTION PIPE SIZE				REMARKS
						WASTE	VENT	DCWS	DHWS	
P-101	WATER CLOSET, FLUSH VALVE, PUBLIC	4.00	10.00	-	10.00	4.00	2.00	1.00	-	1 AND 14
P-418	LAVATORY, PUBLIC	1.00	1.50	1.50	2.00	1.50	1.50	0.375	0.375	2 AND 14
P-502	SERVICE SINK	2.00	3.00	3.00	4.00	3.00	1.50	0.50	0.50	3
P-505	CLINICAL SERVICE SINK	5.00	10.00	3.00	10.00	4.00	2.00	1.25	0.50	4
P-524	SINK, CRS	3.00	1.50	1.50	2.00	1.50	1.50	0.375	0.375	5 AND 14
P-528	SINK, CRS	3.00	1.50	1.50	2.00	1.50	1.50	0.375	0.375	6 AND 14
P-529	SINK, CRS	3.00	1.50	1.50	1.50	1.50	1.50	0.375	0.375	7 AND 14
P-701	SHOWER, PUBLIC	2.00	3.00	3.00	4.00	2.00	1.50	0.00	0.50	8 AND 14
P-708	EMERGENCY EYE & FACE WASH	-	-	-	-	-	-	-	0.75	0.75
P-808	WASHING MACHINE SUPPLY AND DRAIN UNIT	3.00	3.00	3.00	3.00	2.00	1.50	0.50	0.50	
P-910	LIGATURE RESISTANT WATER CLOSET, FLUSH VALVE, PUBLIC	4.00	10.00	-	10.00	4.00	2.00	1.00	-	10 AND 14
P-935	LIGATURE RESISTANT LAVATORY, PUBLIC	1.00	1.50	1.50	2.00	1.50	1.50	0.375	0.375	11 AND 14
P-940	LIGATURE RESISTANT SHOWER, PUBLIC	2.00	3.00	3.00	4.00	2.00	1.50	0.00	0.50	12 AND 14
P-960	LIGATURE RESISTANT ELECTRIC WATER COOLER BOTTLE FILLER STATION	0.50	0.25	-	0.25	1.50	1.50	0.375	-	13 AND 14

**NOTES:**

- FLOOR MOUNTED, VITREOUS CHINA, SIPHON JET, MANUAL FLUSH VALVE, 1.28 GPF MAXIMUM.
- WALL HUNG, 120/24 VOLT SOLENOID PLUG IN TRANSFORMER, SENSOR CONTROL FAUCET WITH 0.35 GPM MAXIMUM LAMINAR FLOW DEVICE. PROVIDE ASSE 1070 LISTED POINT OF USE THERMOSTATIC TYPE PRESSURE BALANCE MIXING VALVE (MV-1) UNDER LAVATORY.
- FLOOR MOUNTED, TERRAZZO, 36-INCH X 24-INCH RECTANGLE, MOP SERVICE BASIN, 12 INCH DEPTH WITH 6 INCH DROP FRONT, STAINLESS STEEL CAPS ON ALL CURBS, HOSE & HOSE BRACKET, SERVICE FAUCET, CHROME PLATED WITH VACUUM BREAKER, INTEGRAL CHECK STOPS, ADJUSTABLE WALL BRACE, PAUL HOOK AND 3/4" HOSE THREAD ON SPOUT, BODY INLETS 8" CENTERS, FOUR ARM HANDLES.
- WALL HUNG, VITREOUS CHINA, FOOT PEDAL 3.5 GPF MAXIMUM FLUSH VALVE, SINGLE SPOUT WALL MOUNTED ELBOW CONTROL FAUCET WITH VACUUM BREAKER, AND FLOOR MOUNTED FLUSHING RIM SERVICE SINK SUPPORT.
- DOUBLE COMPARTMENT, SELF-RIMMING 18 GAUGE, 20-INCH X 24-INCH STAINLESS STEEL, SINGLE LEVER HANDLE SWING SPOUT CONTROL WITH 0.50 GPM LAMINAR FLOW DEVICE. PROVIDE ASSE 1070 LISTED POINT OF USE THERMOSTATIC TYPE PRESSURE BALANCE MIXING VALVE (MV-2) UNDER SINK.
- SINGLE COMPARTMENT, SELF-RIMMING 18 GAUGE, 16-INCH X 19-INCH STAINLESS STEEL, SINGLE LEVER HANDLE GOOSENECK CONTROL WITH 0.50 GPM LAMINAR FLOW DEVICE. PROVIDE ASSE 1070 LISTED POINT OF USE THERMOSTATIC TYPE PRESSURE BALANCE MIXING VALVE (MV-2) UNDER SINK.
- SINGLE COMPARTMENT, SELF-RIMMING 18 GAUGE, 15-INCH X 15-INCH STAINLESS STEEL, SINGLE LEVER HANDLE GOOSENECK CONTROL WITH 0.50 GPM LAMINAR FLOW DEVICE. PROVIDE ASSE 1070 LISTED POINT OF USE THERMOSTATIC TYPE PRESSURE BALANCE MIXING VALVE (MV-2) UNDER SINK.
- WALL MOUNTED SHOWERHEAD CONNECTED TO ARM AT 78-INCHES ABOVE FINISHED FLOOR AND REMOVABLE SPRAYER HEAD ASSEMBLY ON 5 FOOT FLEXIBLE HOSE ON 30-INCH SLIDE BAR. SHOWERHEAD WITH 1.5 GPM MAXIMUM. MOUNT PRESSURE-BALANCED ASSE 1016 THERMOSTATIC MIXING VALVE AT 36-INCHES AND DIVERTER VALVE AT 44-INCHES ABOVE FINISHED FLOOR.
- WALL HUNG, PRE-BUILT VALVE ASSEMBLY, 11 INCH ROUND STAINLESS STEEL RECEPTOR, INVERTED DIRECTIONAL LAMINAR FLOW EYE/FACE WASH WITH STAY OPEN BALL VALVE AND MESH STRAINER.
- FLOOR MOUNTED, STAINLESS STEEL, SIPHON JET, REAR SPUD, POWERED COATED WHITE, REAR INLET, FLOOR OUTLET, PUSH PLATE PISTON TYPE FLUSH VALVE, 1.28 GPF MAXIMUM. WATER CLOSET DESIGN BASIS: MANUFACTURER: WILLOUGHBY IND., MODEL: 1490 SERIES. FLUSHMETER DESIGN BASIS: MANUFACTURER SLOAN, MODEL: TRF 156.
- WALL HUNG, 120/24 VOLT SOLENOID PLUG IN TRANSFORMER, SENSOR CONTROL FAUCET WITH 0.35 GPM MAXIMUM LAMINAR FLOW DEVICE. PROVIDE ASSE 1070 LISTED POINT OF USE THERMOSTATIC TYPE PRESSURE BALANCE MIXING VALVE MV-1 UNDER LAVATORY. DESIGN BASIS: MANUFACTURER: INTERSAN, MODEL LRHD SERIES.
- WALL MOUNTED SHOWERHEAD CONNECTED TO ARM AT 84-INCHES ABOVE FINISHED FLOOR. SHOWERHEAD WITH 1.5 GPM MAXIMUM. MOUNT PRESSURE-BALANCED ASSE 1016 THERMOSTATIC MIXING VALVE AT 40-INCHES ABOVE FINISHED FLOOR. SHOWERHEAD BASIS OF DESIGN: MANUFACTURER: INTERSAN, MODEL: U270 610. THERMOSTATIC MIXING VALVE BASIS OF DESIGN: MANUFACTURER: INTERSAN, MODEL: WM07MVPMSCS. SHOWER DRAIN DESIGN BASIS: MANUFACTURER: INTERSAN, MODEL: 3030/0X.
- WALL HUNG, SELF CONTAINED, STAINLESS STEEL, MECHANICALLY COOLED, FLUSH PUSH BUTTON, HANDICAPPED FIXTURE. FIXTURE SHALL MEET THE AMERICANS WITH DISABILITIES ACT AND THE BARRIER-FREE HEALTHCARE INITIATIVE REQUIREMENTS.

**FLOOR DRAIN SCHEDULE**

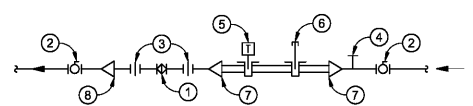
LOCATION	DRAIN TYPE	SIZE INCHES	SEWER	REMARKS
SHOWER	C/D	2"	S	1
SOILED UTILITY	C/D	3"	S	1
MECHANICAL ROOM EQUIPMENT	E	4"	S	1
ICE MAKER	M	2"	S	1

**LEGEND:**  
S = SANITARY

**TYPE:**  
C = FINISHED AREA.  
D = LATEX MASTIC/THIN SET TILE.  
E = HEAVY DUTY, IRON GRATE, SEDIMENT BUCKET.  
M = FUNNEL STRAINER

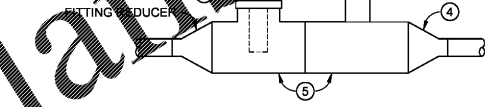
**NOTES:**

- REFER TO DRAWINGS FOR LOCATION OF FLOOR DRAIN.



- NOTES:**  
(BALANCING VALVE ASSEMBLY DETAIL ONLY)
- THERMOSTATIC BALANCING VALVE WITH INTEGRAL CHECK VALVE AND UNION. CONTRACTOR SHALL PROVIDE THERMOSTATIC BALANCING VALVE. MINIMUM SIZE SHALL BE 3/4".
  - ISOLATION VALVE (BALL VALVE).
  - UNION.
  - PETE'S PLUG.
  - DIGITAL THERMOMETER.
  - PLUGGED 3/4" FIP ADAPTER FOR BUILDING MANAGEMENT SYSTEM SENSOR CONNECTION. REFER TO THERMOWELL AND APPARATUS DETAIL THIS SHEET.
  - REDUCER FOR LINE SIZE ADJUSTMENT. REFER TO THERMOWELL AND APPARATUS DETAIL ON THIS SHEET.
  - REDUCER FOR LINE SIZE ADJUSTMENT (IF REQUIRED).

**HOT WATER RETURN THERMOSTATIC BALANCING VALVE ASSEMBLY DETAIL**  
SCALE: NONE



- NOTES:**  
(THERMOWELL AND APPARATUS DETAIL ONLY)
- PLUGGED 3/4" FIP ADAPTER FOR CONTROL CONTRACTOR SUPPLIED THERMOWELL AND SENSOR (INSTALLED BY PLUMBING CONTRACTOR).
  - 3/4" FIP ADAPTOR FOR THERMOWELL INSERTION.
  - THERMOWELL AND DIGITAL THERMOMETER AS SPECIFIED.
  - REDUCER AS NEEDED FOR ALL PIPE SIZES 1/2" THROUGH 1 1/2".
  - 2" X 3/4" TEE.

**THERMOWELL AND APPARATUS DETAIL**  
SCALE: NONE

Revisions:

No.	Description	Date

**CONSULTANT**

**CLARK NEXSEN**

440 Martin Luther King Jr. Blvd  
Macon, GA 31201  
478.743.8415 Fax: 478.743.8239  
www.clarknexsen.com

**ARCHITECT/ENGINEER OF RECORD**

**TOLAND MIZELL MOLNAR**

990 MEANS STREET NW  
STE. 200  
ATLANTA, GA 30316

**STAMP**

Professional Engineer Seal for Georgia, State of Georgia, License No. 10000, Name: TOLAND MIZELL MOLNAR.

**Office of Construction and Facilities Management**

VA U.S. Department of Veterans Affairs

**Drawing Title**  
SCHEDULES AND DETAILS

**Approved:** Project Director

**Phase**  
FINAL SUBMITTAL

**FULLY SPRINKLERED**

**Project Title**  
RENOVATE GERIATRIC-MED-PSYCH INPATIENT 5TH FLOOR

**Project Number**  
508-17-101

**Building Number**  
Bldg C: Main Tower

**Drawing Number**  
P-501

**Location**  
Atlanta VA Medical Center - Atlanta, Ga.

**Issue Date**  
06-07-2019

**Checked**  
WAW

**Drawn**  
DLB

PROJECTS/2020/240-1-TM-VA-ATLANTA RENOVATE GERIATRIC MED/240-1-TM-VA-ATLANTA RENOVATE GERIATRIC MED/SHEETS/SP468-P-501.DWG