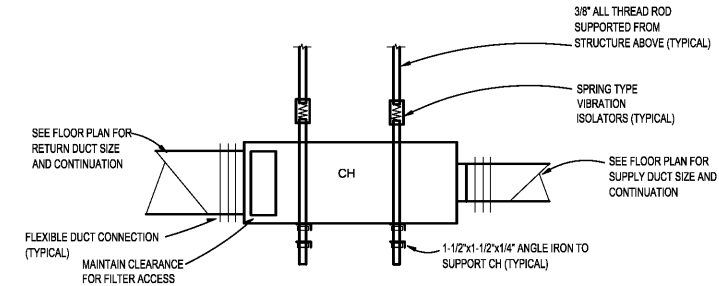
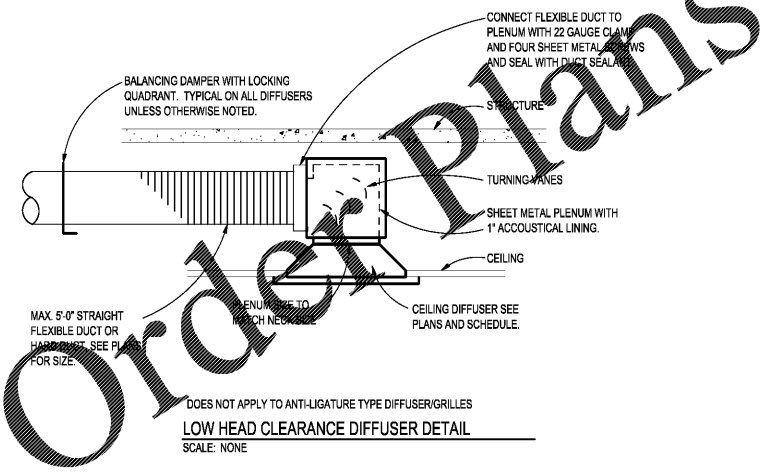


- NOTES:**
(DUCT CONNECTIONS - AIR TERMINAL UNITS ONLY)
- RIGID STRAIGHT TERMINAL UNIT INLET LENGTH SHALL BE A MINIMUM OF 3 TIMES THE DIAMETER OF INLET.
 - A FLEXIBLE AIR DUCT CONNECTOR IS NOT MANDATORY FOR INLET TO THIS BOX, BUT ALLOWED TO ACCOMMODATE MINOR OFFSETS. MAXIMUM LENGTH 3'-0" (900mm). USE CONNECTORS RATED FOR MEDIUM PRESSURE DUCT.
 - A BRANCH DUCT SERVING AN INDIVIDUAL BOX MAY BE THE SAME SIZE AS THE BOX INLET, PROVIDED THE EQUIVALENT LENGTH OF THE BRANCH DUCT, AS SHOWN, DOES NOT EXCEED 10 FEET (3 METERS). FOR LONGER LENGTHS, INCREASE THE DUCT SIZE AND PROVIDE A DUCT TRANSITION TO MAINTAIN THE DUCT STATIC PRESSURE DROP AT OR BELOW 0.2"/100' (1.64Pa/m).
 - FLEXIBLE AIR DUCT CONNECTORS, WHEN USED FROM TERMINAL UNIT SUPPLY AIR DUCT TO DIFFUSER, SHALL NOT EXCEED 5'-0" (1500mm). USE RIGID ELBOWS FOR CHANGE OF DIRECTION GREATER THAN 45°.
 - COMPONENT ARRANGEMENT MAY VARY BY MANUFACTURER. PROVIDE INSULATION W/VAPOR BARRIER FOR CONNECTING DUCT SECTIONS.

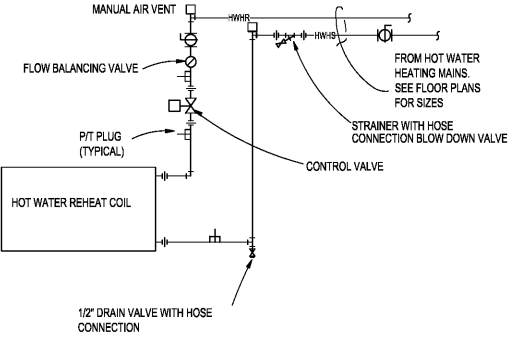
DUCT CONNECTIONS - AIR TERMINAL UNITS
SCALE: NONE



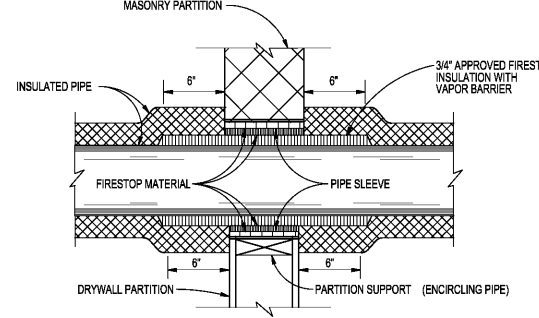
CABINET HEATER INSTALLATION DETAIL
SCALE: NONE



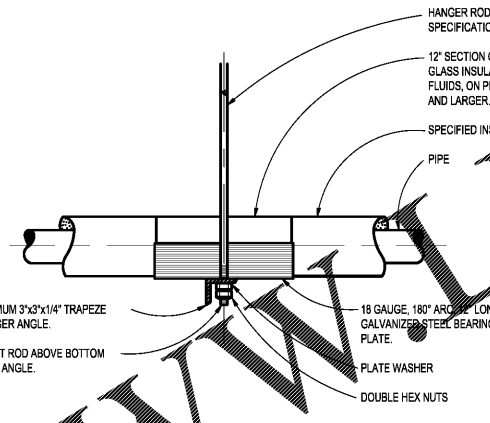
LOW HEAD CLEARANCE DIFFUSER DETAIL
SCALE: NONE



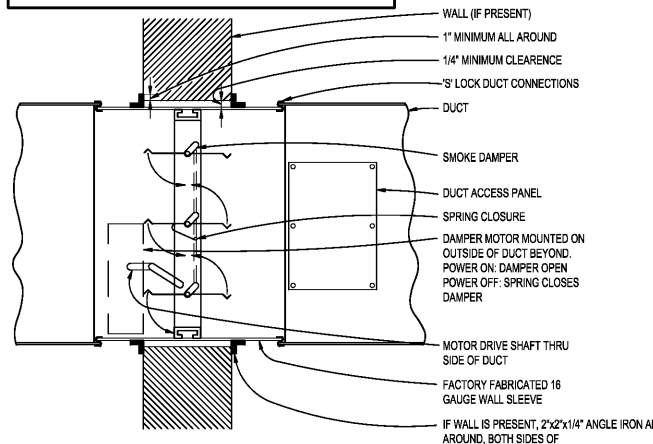
VAV TERMINAL AND CABINET HEATER HOT WATER COIL PIPING
SCALE: NONE



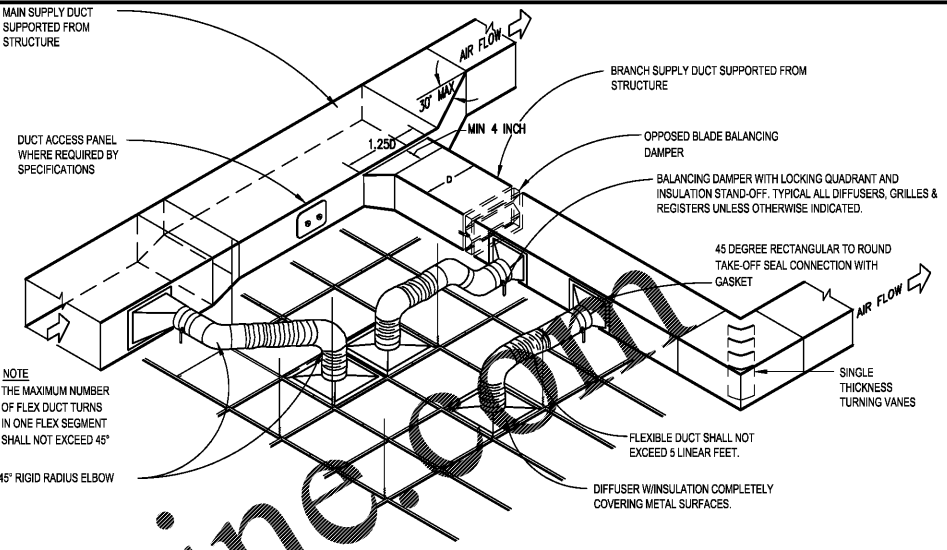
PARTITION OR CHASE PENETRATION
PIPE PENETRATION OF FIRE/SMOKE BARRIERS
SCALE: NONE



- NOTES:**
- DESIGNER GENERAL GUIDANCE. INSTALL EACH SMOKE DAMPER IN ACCORDANCE WITH INSTALLATION INSTRUCTIONS PACKAGED WITH DAMPER TO ENSURE UL RATING.
 - PROVIDE 24V OR 120V POWER AS REQUIRED. COORDINATE WITH ELECTRICAL CONTRACTOR.
 - DAMPER IS SHOWN IN WALL, BUT SHALL BE INSTALLED WITHIN 12\"/>

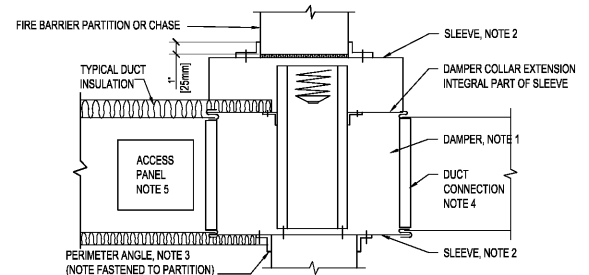


SMOKE DAMPER DETAIL
SCALE: NONE



TYPICAL DUCTWORK SYSTEM AND MATERIAL INSTALLATION
SCALE: NONE

- NOTES:**
(TYPICAL DUCTWORK SYSTEM AND MATERIAL INSTALLATION ONLY)
- THIS DETAIL APPLIES TO LOW PRESSURE SUPPLY AIR, ALL RETURN AIR AND ALL EXHAUST AIR DUCTS.
 - THE VOLUME DAMPERS SHOWN HERE SHALL BE IMPLEMENTED REGARDLESS IF SHOWN ON THE PLANS OR NOT.



- NOTES:**
- A VERTICAL DAMPER IS SHOWN. HORIZONTAL DAMPER INSTALLATION, IS SIMILAR. FOLLOW DAMPER MANUFACTURER'S INSTRUCTIONS, INCLUDING FASTENER OPTIONS AND GAGES FOR SLEEVE AND PERIMETER ANGLES. FIRE DAMPERS MUST BE INSTALLED IN THE PARTITION OR FLOOR AND NOT OUTSIDE THE PENETRATION.
 - GALVANIZED SLEEVE: GAGE NOT LESS THAN CONNECTING DUCT. FASTEN SLEEVE TO DAMPER FRAME AND TO PERIMETER ANGLES.
 - PERIMETER ANGELS: GALVANIZED STEEL, NOT LESS THAN 1 1/2"x1 1/2" (40x40mm), 14 GAGE, TO PROVIDE 1" (25mm) MINIMUM OVERLAP OF OPENINGS ON ALL 4 SIDES.
 - BREAKAWAY DUCT CONNECTION: CONTRACTOR'S OPTION OF TYPES SHOWN IN SMACNA. ACCESS PANELS: SIZE AND LOCATION TO PERMIT SERVICING THE FUSIBLE LINK OR LINKS.
 - PROVIDE 1/4" TO 1/2" (6 TO 15mm) CLEARANCE ON HEIGHT AND WIDTH. FILL OPEN SPACE WITH ROCK WOOL FIRESTOP FIBER.

FIRE DAMPER DETAIL
SCALE: NONE

Order Plans @

Revisions: Date:	CONSULTANT CLARKNEXSEN 440 Martin Luther King Jr. Blvd Macon, GA 31201 478.743.8415 Fax: 478.743.8239 www.clarknexsen.com	ARCHITECT/ENGINEER OF RECORD TOLAND MIZELL MOLNAR 590 MEANS STREET NW STE. 200 ATLANTA, GA 30318	STAMP 	Office of Construction and Facilities Management VA U.S. Department of Veterans Affairs	Drawing Title DETAILS Approved: Project Director	Phase FINAL SUBMITTAL FULLY SPRINKLERED	Project Title RENOVATE GERIATRIC-MED-PSYCH INPATIENT 5TH FLOOR Location Atlanta VA Medical Center - Atlanta, Ga. Issue Date 08-07-2019	Project Number 508-17-101 Building Number Bldg C: Main Tower Drawing Number M-501
	Checked WAW	Drawn KAG						