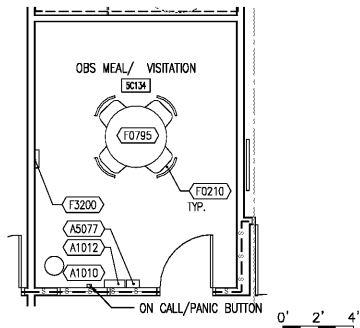


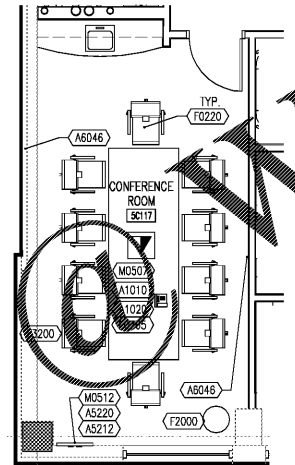
A
B
C
D
E
F

QTY/RM	JSN #	AI	DESCRIPTION
OBS MEAL/VISITATION ROOM			
	A1010	C/C	TELECOMMUNICATION OUTLET-SEE PLAN
1	A1012	V/C	TELEPHONE, DESK, 1 LINE
1	A5077	V/C	DISPENSER, HAND SANITIZER, HANDS FREE
4	F0210	V/V	CHAIR, SIDE, WITHOUT ARMS
1	F0795	V/V	TABLE, DINING
1	F3200	V/V	CLOCK, BATTERY, 12" DIAMETER
		C/C	ON CALL/PANIC BUTTON



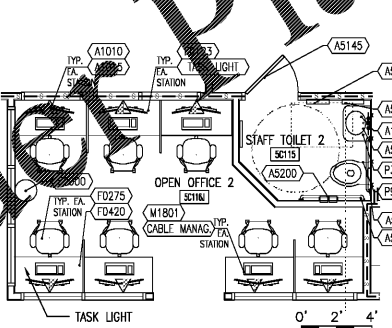
5 MEAL VISITATION ROOM SHOWN AS ROOM SC134

QTY/RM	JSN #	AI	DESCRIPTION
CONFERENCE ROOM			
1	A1010	C/C	TELECOMMUNICATION OUTLET-SEE PLAN
1	A1020	V/C	TELEPHONE, CONFERENCE SYSTEM
1	A5212	C/C	BRACKET, TELEVISION, WALL MOUNTED, TILT/ANGLE
1	A5220	C/C	BRACKET, TELEVISION, WALL BACKING
1	A6046	V/V	ARTWORK, DECORATIVE, WITH FRAME
10	F0220	V/V	CHAIR, CONFERENCE
1	F0765	V/V	TABLE, FOLDING/NESTING
1	F2000	V/V	BASKET, WASTEPAPER, STEP-ON, 23GAL.
1	F3200	V/V	CLOCK, BATTERY, 12" DIAMETER
1	M0507	V/V	VIDEO TELECONFERENCE SYSTEM
1	M0512	V/V	TELEVISION, HD/IV, LARGE SCREEN 70"
		C/C	CABLE MANAGEMENT



4 CONFERENCE ROOM SHOWN AS ROOM SC117

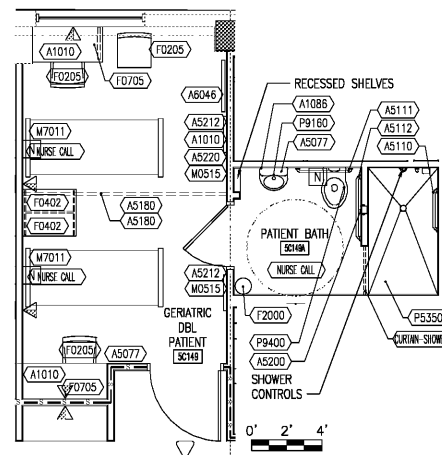
QTY/RM	JSN #	AI	DESCRIPTION
OPEN AREA 2 - WORK STATIONS			
1	A1010	C/C	TELECOMMUNICATION OUTLET-SEE PLAN
1	A1015	V/C	TELEPHONE, DESK, MULTIPLE LINE
15	F0123	V/V	48Wx24D DESK CONFIG. OVERHEAD W/LINEAR LIGHT W/PARTITION ERGO TOOLS, STUOL B/B/F (PEDESTAL CABINET)
15		V/V	TASK LIGHT
15	F0275	V/V	TASK CHAIR
2	F0420	V/V	24"Wx24"W LATERAL FILE
1	F2000	V/V	BASKET, WASTEPAPER
15	M1801	V/V	COMPUTER, MICROPROCESSING, W/FLAT PANEL MONITORS
		V/V	CABLE MANAGEMENT



3 OPEN OFFICE 2 AND STAFF TOILET 2 SHOWN AS OPEN OFFICE SC116J AND STAFF TOILET SC115

QTY/RM	JSN #	AI	DESCRIPTION
STAFF TOILET 2			
1	A1067	C/C	MIRROR, FLOAT GLASS, ADA ACCESSIBLE
1	A5075	V/C	DISPENSER, SOAP, DISPOSABLE
1	A5082	C/C	DISPENSER, PAPER TOWEL, SENSOR, HANDS FREE
1	A5090	C/C	DISPOSAL, SANITARY NAPKIN, SS, SURFACE MOUNTED
1	A5075	V/C	NAPKIN/TAMPON VENDING MACHINE
1	A5111	C/C	GRAB BAR, 1-1/4" DIA., SS, 2 WALL, W/C ACCESSIBLE
1	A5112	C/C	GRAB BAR, 1-1/4" DIA., SS, 2 WALL, W/C ACCESSIBLE
1	A5145	C/C	HOOK, GARMENT, DOUBLE, SS, SURFACE MOUNTED
1	A5200	V/V	DISPENSER, TOILET TISSUE, SS, 2-ROLL, SURFACE MOUNTED
1	F2010	V/V	BASKET, WASTEPAPER, STEP-ON
1	P3200	C/C	LAVATORY, VITREOUS CHINA, SLAB TYPE W/SENS OP FAUC
1	P9050	C/C	TOILET, WALL HUNG, SIPHON JET

2 DOUBLE PATIENT BEDROOM - BRNP2 SHOWN AS ROOM SC149 W/ BATHROOM SC149A SIM AT ROOMS SC138, SC140, SC141, SC147, SC150 AND SC152



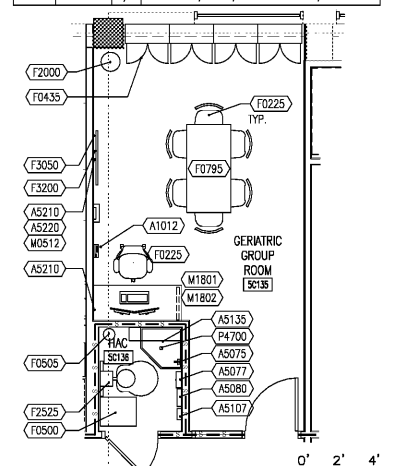
QTY/RM	JSN #	AI	DESCRIPTION
DESCRIPTION DOUBLE PATIENT BEDROOM			
1	A6046	V/V	ARTWORK/WHITE BOARD, DECORATIVE PSYCHIATRY
2	F0402	V/V	THREE SHELF STORAGE UNIT 27"Wx13.75"Dx53.25"H
	A1010	C/C	TELECOMMUNICATION OUTLET-SEE PLAN
1	A5077	V/C	BEHAVIORAL HEALTH DISPENSER HAND SANITIZER
2	A5212	C/C	43" TELEVISION/CLOCK, RECESSED WALL-MOUNTED BOX
2	A5220	C/C	TELEVISION, WALL BACKING
2	F0205	V/V	CHAIR, SIDE WITH ARMS
2	F0705	V/V	TABLE, COMPUTER, SMALL
1	M0515	V/V	TELEVISION, HD 1080P LED 43" CLASS
2	M7011	V/V	BED, PLATFORM, WITHOUT VISIBLE LEGS, PSYCHIATRIC
2		C/C	NURSE CALL, PSYCHIATRY

QTY/RM	JSN #	AI	DESCRIPTION
TOILET/SHOWER, PATIENT AT DOUBLE BEDROOM			
1	A1086	C/C	MIRROR, SAFETY, PSYCHIATRIC
1	A5077	V/C	BEHAVIORAL HEALTH DISPENSER HAND SANITIZER
1	A5110	C/C	GRAB BAR, PSYCHIATRIC
1	A5111	C/C	GRAB BAR, PSYCHIATRIC
1	A5112	C/C	GRAB BAR, PSYCHIATRIC
1	A5200	C/C	DISPENSER, TOILET TISSUE, PSYCHIATRIC
1	F2000	V/V	COLLAPSIBLE WASTE RECEPTACLE
1	P5350	C/C	SHOWER, PATIENT, PSYCHIATRIC
1		C/C	RECESSED SHELVES
1		C/C	PSYCHIATRIC PATIENT SHOWER CONTROLS
1	P9160	C/C	LAVATORY, CHINA, FOR DISTURBED PATIENT
1	P9400	C/C	TOILET, SIPHON JET, PSYCHIATRIC
1		C/C	CURTAIN TRACK, RECESSED
1		C/C	CURTAIN-SHOWER (BREATHABLE WITH COLLAPSIBLE HOOKS)
1		C/C	NURSE CALL

1 GERIATRIC GROUP ROOM AND HAC SHOWN AS ROOM SC135 AND SC136, SIM EL2

QTY/RM	JSN #	AI	DESCRIPTION
HOUSEKEEPING AIDES CLOSET (HAC)			
1	A5075	V/C	DISPENSER, SOAP, DISPOSABLE
1	A5077	V/C	DISPENSER, HAND SANITIZER, HANDS FREE
1	A5080	V/C	DISPENSER, PAPER TOWEL, SS, SURFACE MOUNTED
1	A5107	V/C	DISPENSER, GLOVE, SURGICAL/EXAMINATION, WALL MOUNTED
1	A5135	C/C	SHELF, UTILITY W/MOP/BROOM HOLDERS, SS, SURFACE MOUNTED
1	F0500	V/V	CART, JANITOR'S
1	F0505	V/V	BUCKET, MOP, WITH WRINGER, 26 QUART
1	P4700	C/C	SINK, MOP, MOLDED STONE
1	F2525	V/V	BURNISHER, FLOOR

QTY/RM	JSN #	AI	DESCRIPTION
GERIATRIC GROUP ROOM			
1	A1012	V/C	TELEPHONE, DESK, 1 LINE
1	A5210	C/C	CUSTOM 55" TELEVISION AND DVD/DVR, SURFACE WALL MOUNTED BOX, PSY/CHAIRY
1	A5220	C/C	BRACKET, TELEVISION, WALL BACKING
1	M1802	V/V	WORK STATION, COMPUTER, RETRACTABLE, WALL MOUNTED
1	M1801	V/V	COMPUTER, MICROPROCESSING, W/FLAT PANEL MONITOR
7	F0225	V/V	CHAIR, DINING ROOM
1	F2000	V/V	BASKET, WASTEPAPER, STEP ON, 23GAL.
1	F3200	V/V	CLOCK, BATTERY, 12" DIAMETER
1	F3050	V/V	WHITEBOARD DRY ERASE, 48X36
1	F0435	V/V	CABINET, STORAGE, MULTI MEDIA, PSYCHIATRIC
1	F0795	V/V	TABLE, DINING
1	M0512	V/V	TELEVISION, HD/IV, LARGE SCREEN, 55"

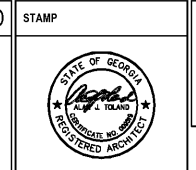


1 GERIATRIC GROUP ROOM AND HAC SHOWN AS ROOM SC135 AND SC136, SIM EL2

Revisions:	Date:

CONSULTANT

ARCHITECT/ENGINEER OF RECORD
TOLAND MIZELL MOLNAR
 590 MEANS STREET NW
 STE. 200
 ATLANTA, GA 30318



Office of Construction and Facilities Management
 U.S. Department of Veterans Affairs

Drawing Title: ROOM TYPE EQUIPMENT LAYOUTS
 Phase: FINAL SUBMITTAL
 Approved: Project Director

FULLY SPRINKLERED

Project Title: RENOVATE GERIATRIC-MED-PSYCH INPATIENT 5TH FLOOR	Project Number: 508-17-101
Location: Atlanta VA Medical Center - Atlanta, Ga.	Building Number: Bldg C: Main Tower
Issue Date: 06-07-2019	Checked: AJT
Drawn: DB/MCC	Drawing Number: A803

WWW.LDILine.com