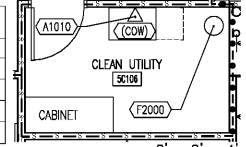


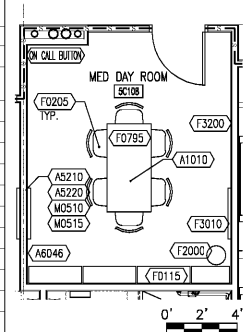
QTY/RM	JSN #	AI	DESCRIPTION
	A1010	C/C	TELECOMMUNICATION OUTLET-SEE PLAN
1	F2000	V/V	BASKET, WASTEPAPER, STEP-ON
1		V/V	COMPUTER ON WHEELS (COW)



10 CLEAN UTILITY
1/4" = 1'-0"

SHOWN AS CLEAN UTILITY 5C106
SIM AT 5C143

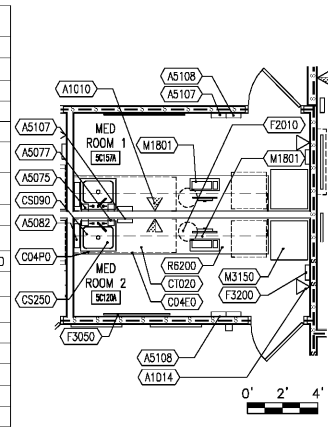
QTY/RM	JSN #	AI	DESCRIPTION
	A1010	C/C	TELECOMMUNICATION OUTLET-SEE PLAN
1	A5210	C/C	CUSTOM 55" TELEVISION AND DVD/DVR, SURFACE MOUNTED BOX, PSYCHIATRY
1	A5220	C/C	BRACKET, TELEVISION, WALL BACKING
1	A6046	V/V	ARTWORK, DECORATIVE, WITH FRAME
1	F0115	V/V	BOOKCASE, OPEN, 5 SHELF, PSYCH.
6	F0205	V/V	CHAIR, SIDE WITH ARMS, PSYCH.
1	F0795	V/V	TABLE, DINNING
1	F2000	V/V	BASKET, WASTEPAPER, FIRE RESISTANT BEIGE
1	F3200	V/V	CLOCK, BATTERY, 12" DIAMETER
1	F3010	V/V	BOARD, BULLETIN, 48x48, PSYCH.
1	M0510	V/V	TV/DVD COMBINATION
1	M0515	V/V	TELEVISION, HD 1080P LED 43" CLASS
1		C/C	ON CALL/PANIC BUTTON



9 MED DAY ROOM
1/4" = 1'-0"

SHOWN AS ROOM 5C108

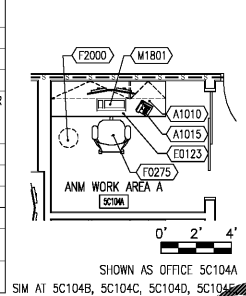
QTY/RM	JSN #	AI	DESCRIPTION
	A1010	C/C	TELECOMMUNICATION OUTLET-SEE PLAN
1	A1014	V/C	TELEPHONE, WALL, 1 LINE WITH SPEAKER
1	A5075	V/C	DISPENSER, SOAP, DISPOSABLE
1	A5077	V/C	DISPENSER, HAND SANITIZER, HANDS-FREE
1	A5082	C/C	DISPENSER, PAPER TOWEL, SENSOR, HANDS-FREE
1	A5107	V/C	DISPENSER, GLOVE, SURGICAL/EXAMINATION, WALL MOUNTED
1	A5108	V/C	WASTE DISPOSAL UNIT, SHARPS, 3 GAL
1	CD4P0	C/C	CABINET, SINK, U/C/B, 2 DOOR, 36X36X22
1	CS250	C/C	SINK, SS, SINGLE COMPARTMENT, 6"x12"x9" ID
1	CI020	C/C	COUNTERTOP, SOLID SURFACE
1	F2010	V/V	BASKET, WASTEPAPER, STEP-ON
1	F3050	V/V	WHITEBOARD, DRY ERASER
1	F3200	V/V	CLOCK, BATTERY, 12" DIAMETER
1	M1801	V/V	COMPUTER, MICROPROCESSING, W/FLAT PANEL MONITOR
1	M3150	V/V	DISTRIBUTION SYSTEM, MEDICATION, AUTOMATIC
1	R6200	V/V	REFRIGERATOR, UC or F/S, 5Cu.Ft.



6 MEDICATION ROOM (MEDP1)
1/4" = 1'-0"

SHOWN AS MED ROOM 5C-120A
ROOMS 5C-157A & 5C127 SIMILAR ALL KEYNOTES APPLY TO BOTH ROOMS

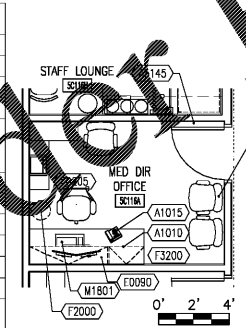
QTY/RM	JSN #	AI	DESCRIPTION
	A1010	C/C	TELECOMMUNICATION OUTLET-SEE PLAN
1	A1015	V/C	TELEPHONE, DESK, MULTIPLE LINE
1	E0123	V/V	72Wx24D DESK CONFIG. OVERHEAD W/LINEAR LIGHT W/PARTITION ERGO TOOLS, FOOT STOOL B/B/F (PEDESTAL CABINET)
1		V/V	TASK LIGHT
1	F0275	V/V	TASK CHAIR
1	F2000	V/V	BASKET, WASTEPAPER, FIRE RESISTANT
1		V/V	CABLE MANAGEMENT
1	M1801	V/V	COMPUTER, MICROPROCESSING, W/FLAT PANEL MONITORS
1		V/V	CABLE MANAGEMENT



5 TYPICAL OFFICE (OFA07)
1/4" = 1'-0"

SHOWN AS OFFICE 5C104A
SIM AT 5C104B, 5C104C, 5C104D, 5C104E, 5C104F, 5C116D, 5C116E, 5C116F AND 5C116G

QTY/RM	JSN #	AI	DESCRIPTION
	A1010	C/C	TELECOMMUNICATION OUTLET-SEE PLAN
1	A1015	V/C	TELEPHONE, DESK, MULTIPLE LINE
1	A5145	C/C	HOOK, GARMENT, DOUBLE, SS, SURFACE MOUNTED
1	E0090	V/V	72Wx24Dx48Wx24D RETURN DESK CONFIG. OVERHEAD W/LINEAR LIGHT ERGO TOOLS FOOT STOOL B/B/F (PEDESTAL CABINET)
1		V/V	TASK LIGHT
1	F0205	V/V	TASK CHAIR
3	F0275	V/V	GUEST CHAIR
1	F0420	V/V	42Wx20D LATERAL FILE
1	F3200	V/V	CLOCK, BATTERY, 12" DIAMETER
1	F2000	V/V	BASKET, WASTEPAPER, 10 L
1	M1801	V/V	COMPUTER, MICROPROCESSING, W/FLAT PANEL MONITORS

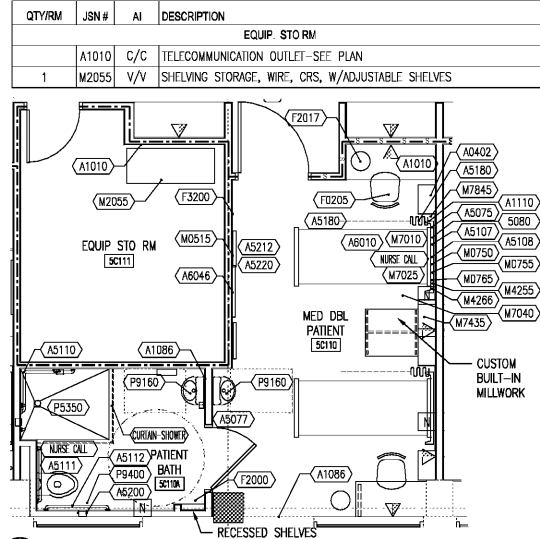


4 TYPICAL OFFICE (OFA09)
1/4" = 1'-0"

SHOWN AS OFFICE 5C118A
SIM AT 5C116B, 5C123, 5C139, 5C151 AND 5C161

QTY/RM	JSN #	AI	DESCRIPTION
	A1086	C/C	MIRROR, SAFETY, PSYCHIAIRIC
1	A5110	C/C	GRAB BAR, PSYCHIAIRIC
1	A5111	C/C	GRAB BAR, PSYCHIAIRIC
1	A5112	C/C	GRAB BAR, PSYCHIAIRIC
1	A5200	C/C	DISPENSER, TOILET TISSUE, PSYCHIAIRIC
1	F2000	V/V	COLLAPSIBLE WASTE RECEPTACLE
1	P5350	C/C	SHOWER, PATIENT, PSYCHIAIRIC
1	NO JSN	C/C	PSYCHIAIRIC PATIENT SHOWER CONTROLS
1	P9160	C/C	LAVATORY, CHINA, FOR DISTURBED PATIENT
1	P9400	C/C	TOILET, SIPHON JET, PSYCHIAIRIC
1		C/C	CURTAIN TRACK, RECESSED
1		V/V	CURTAIN-SHOWER (BREATHABLE WITH COLLAPSIBLE HOOKS)
1		C/C	RECESSED SHELVES
1		C/C	NURSE CALL

QTY/RM	JSN #	AI	DESCRIPTION
	A6046	V/V	ARTWORK/WHITE BOARD, DECORATIVE, PSYCHIAIRY
2	F0402	V/V	THREE SHELF STORAGE UNIT (27"Wx3.75"Dx53.25"H)
	A1010	C/C	TELECOMMUNICATION OUTLET-SEE PLAN
2	A1086	C/C	MIRROR, SAFETY, PSYCHIAIRIC
2	A1110	C/C	HEADWALL GENERAL, 1-2 B/D
1	A5075	V/V	DISPENSER, SOAP, DISPOSABLE
1	A5077	V/C	BEHAVIORAL HEALTH DISPENSER HAND SANITIZER
2	A5080	V/C	DISPENSER, PAPER TOWEL, SS SURFACE MOUNTED
2	A5107	V/C	DISPENSER, GLOVE, SURGICAL/EXAMINATION, WALL MOUNTED
2	A5108	V/C	WASTE DISPOSAL UNIT, SHARPS, 3 GAL
1	A5180	C/C	TRACK, CUBICLE, SURFACE MOUNTED
1	A5180	V/V	PRIVACY CURTAIN
2	A5212	C/C	43" TELEVISION/CLOCK, RECESSED WALL-MOUNTED BOX
2	A5220	C/C	TELEVISION, WALL BACKING
2	A6010	C/C	BUMPER, WALL, BED LOCATOR
2	F0205	V/V	CHAIR, SIDE WITH ARMS
2	F2017	V/V	COLLAPSIBLE WASTE RECEPTACLE
1	F3200	V/V	CLOCK, BATTERY, 12" DIAMETER
1	M0515	V/V	TELEVISION, HD 1080P LED 43" CLASS
2	M0750	V/V	FLOWMETER, AIR, CONNECT W/50 PSI SUPPLY
2	M0755	V/V	FLOWMETER, OXYGEN, LOW FLOW
2	M0765	V/V	REGULATOR, VACUUM
2	M4255	V/V	STAND, IV, ADJUSTABLE
2	M4266	V/V	PUMP, VOLUMETRIC, INFUSION, MULTIPLE LINE
2	M7010	V/V	BEHAVIORAL BED, PATIENT, ELECTRIC
2	M7025	V/V	MATTRESS, BED, HOSPITAL
2	M7040	V/V	TABLE, OVERBED
2	M7435	C/C	LIGHT, OVERBED, DIRECT AND INDIRECT CHANNELED
1	P9160	C/C	LAVATORY, CHINA, FOR DISTURBED PATIENT
1		C/C	CUSTOM BUILT-IN MILLWORK OR ROLLED UP DOOR
2		C/C	NURSE CALL, PSYCHIAIRY

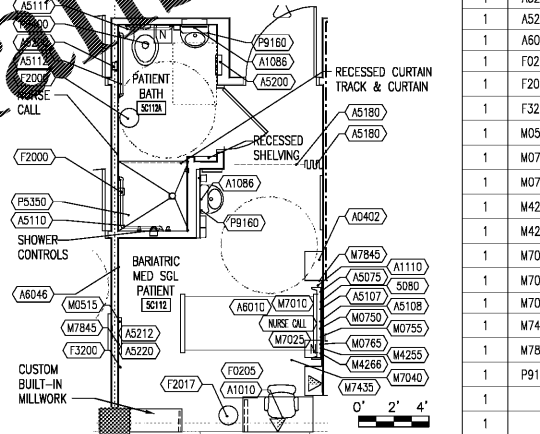


8 DOUBLE PATIENT BEDROOM - BRNP2
1/4" = 1'-0"

QTY/RM	JSN #	AI	DESCRIPTION
	A1010	C/C	TELECOMMUNICATION OUTLET-SEE PLAN
1	M2055	V/V	SHELVING STORAGE, WIRE, CRS, W/ADJUSTABLE SHELVES

QTY/RM	JSN #	AI	DESCRIPTION
	A1086	C/C	MIRROR, SAFETY, PSYCHIAIRIC
1	A5110	C/C	GRAB BAR, PSYCHIAIRIC
1	A5111	C/C	GRAB BAR, PSYCHIAIRIC
1	A5112	C/C	GRAB BAR, PSYCHIAIRIC
1	A5200	C/C	DISPENSER, TOILET TISSUE, PSYCHIAIRIC
1	F2000	V/V	COLLAPSIBLE WASTE RECEPTACLE
1	P5350	C/C	SHOWER, PATIENT, PSYCHIAIRIC
1	NO JSN	C/C	PSYCHIAIRIC PATIENT SHOWER CONTROLS
1	P9160	C/C	LAVATORY, CHINA, FOR DISTURBED PATIENT
1	P9400	C/C	TOILET, SIPHON JET, PSYCHIAIRIC
1		C/C	CURTAIN TRACK, RECESSED
1		V/V	CURTAIN-SHOWER (BREATHABLE WITH COLLAPSIBLE HOOKS)
1		C/C	RECESSED SHELVES
1		C/C	NURSE CALL

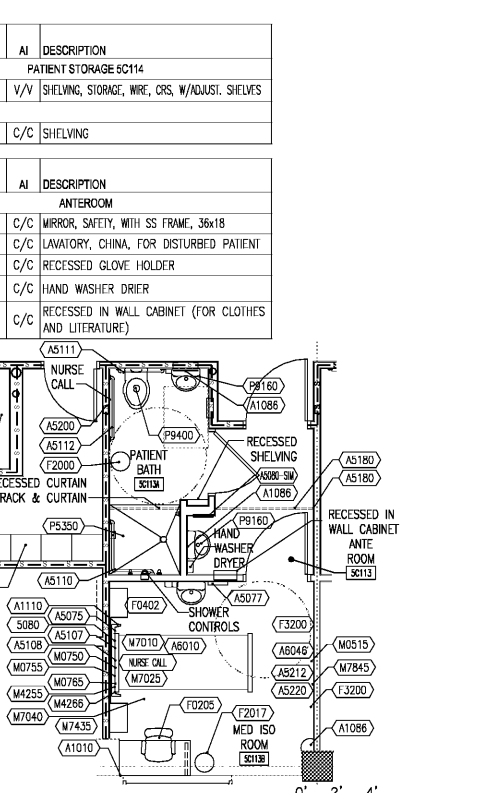
QTY/RM	JSN #	AI	DESCRIPTION
	A6046	V/V	ARTWORK/WHITE BOARD, DECORATIVE, PSYCHIAIRY
1	F0402	V/V	THREE SHELF STORAGE UNIT (27"Wx3.75"Dx53.25"H)
	A1010	C/C	TELECOMMUNICATION OUTLET-SEE PLAN
1	A1086	C/C	MIRROR, SAFETY, PSYCHIAIRIC
1	A1110	C/C	HEADWALL GENERAL, 1-2 B/D
1	A5075	V/V	DISPENSER, SOAP, DISPOSABLE
1	A5077	V/C	BEHAVIORAL HEALTH DISPENSER HAND SANITIZER
1	A5080	V/C	DISPENSER, PAPER TOWEL, SS SURFACE MOUNTED
1	A5107	V/C	DISPENSER, GLOVE, SURGICAL/EXAMINATION, WALL MNTD.
1	A5108	V/C	WASTE DISPOSAL UNIT, SHARPS, 3 GAL.
1	A5180	C/C	TRACK, CUBICLE, SURFACE MOUNTED
1	A5180	V/V	PRIVACY CURTAIN
1	A5212	C/C	43" TELEVISION/CLOCK, RECESSED WALL MNTD. BOX
1	A5220	C/C	TELEVISION, WALL BACKING
1	A6010	C/C	BUMPER, WALL, BED LOCATOR
1	F0205	V/V	CHAIR, SIDE WITH ARMS
1	F2017	V/V	COLLAPSIBLE WASTE RECEPTACLE
1	F3200	V/V	CLOCK, BATTERY, 12" DIAMETER
1	M0515	V/V	TELEVISION, HD 1080P LED 43" CLASS
1	M0750	V/V	FLOWMETER, AIR, CONNECT W/50 PSI SUPPLY
1	M0755	V/V	FLOWMETER, OXYGEN, LOW FLOW
1	M4255	V/V	STAND, IV, ADJUSTABLE
1	M4266	V/V	PUMP, VOLUMETRIC, INFUSION, MULTIPLE LINE
1	M7010	V/V	BED, PLATFORM W/ MATTRESS 40"x83"
1	M7040	V/V	TABLE, OVERBED
1	M7435	C/C	LIGHT, OVERBED, DIRECT AND INDIRECT
1	M7845	V/V	MONITOR, PHYSIOLOGICAL, BEDSIDE, 4 CHANNEL
1	P9160	C/C	LAVATORY, CHINA, FOR DISTURBED PATIENT
1		C/C	CUSTOM BUILT-IN MILLWORK OR ROLLED UP DOOR
1		C/C	NURSE CALL, PSYCHIAIRY



3 SINGLE PATIENT BEDROOM & BATHROOM - BRMS1-BRNP1
1/4" = 1'-0"

QTY/RM	JSN #	AI	DESCRIPTION
	A6155	V/V	SHELVING STORAGE, WIRE, CRS, W/ADJUST. SHELVES
1	M2055	C/C	SHELVING

7 PATIENT ROOM SECLUSION - BRNP5
1/4" = 1'-0"

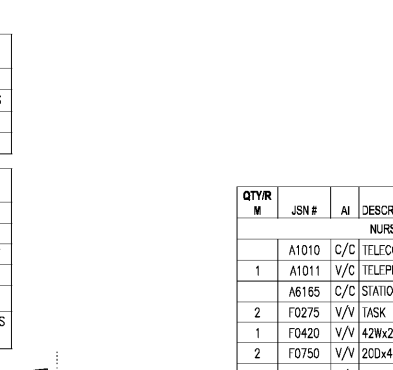


2 ISOLATION ROOM - BRNP5
1/4" = 1'-0"

QTY/RM	JSN #	AI	DESCRIPTION
	A1085	C/C	MIRROR, SAFETY, WITH SS FRAME, 36x18
1	P9160	C/C	LAVATORY, CHINA, FOR DISTURBED PATIENT
1	A5077	V/C	BEHAVIORAL HEALTH DISPENSER HAND SANITIZER
1		C/C	RECESSED GLOVE HOLDER
1		C/C	HAND WASHER DRIER
1		C/C	RECESSED IN WALL CABINET (FOR CLOTHES AND LITERATURE)

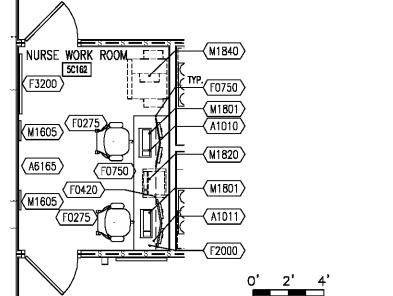
QTY/RM	JSN #	AI	DESCRIPTION
	A1086	C/C	MIRROR, SS, WITH SS FRAME, 36x18
1	A5110	C/C	GRAB BAR, PSYCHIAIRIC
1	A5111	C/C	GRAB BAR, PSYCHIAIRIC
1	A5112	C/C	GRAB BAR, PSYCHIAIRIC
1	A5200	C/C	DISPENSER, TOILET TISSUE, PSYCHIAIRIC
1	F2000	V/V	COLLAPSIBLE WASTE RECEPTACLE
1	P9400	C/C	TOILET, SIPHON JET, PSYCHIAIRIC
1	P9160	C/C	LAVATORY, CHINA, FOR DISTURBED PATIENT

6 ANTEROOM
1/4" = 1'-0"



5 NURSE WORK ROOM
1/4" = 1'-0"

QTY/RM	JSN #	AI	DESCRIPTION
	A1010	C/C	TELECOMMUNICATION OUTLET-SEE PLAN
1	A1011	V/C	TELEPHONE, DESK, 1 LINE
1	A6165	C/C	STATION, PNEUMATIC TUBE SYSTEM-SEE PLAN
2	F0275	V/V	TASK CHAIR
1	F0420	V/V	42Wx20D LATERAL FILE
2	F0750	V/V	20Dx48W DESK UNDERWORK SURFACE OUTLET
1	F2000	V/V	BASKET, WASTEPAPER, FIRE RESISTANT
1	F3200	V/V	CLOCK, BATTERY, 12" DIAMETER
1	M1805	V/V	HOLDER, CHART, 20 EACH
2	M1801	V/V	COMPUTER, MICROPROCESSING, W/FLAT PANEL MONITOR
1	M1820	V/V	LABEL PRINTER
1	M1840	V/V	PRINTER/COPIER/FAX COMBINATION



1 NURSE WORK ROOM
1/4" = 1'-0"

CONSULTANT	ARCHITECT/ENGINEER OF RECORD	STAMP	Office of Construction and Facilities Management	Drawing Title ROOM TYPE EQUIPMENT LAYOUTS	Phase FINAL SUBMITTAL	Project Title RENOVATE GERIATRIC-MED-PSYCH INPATIENT 5TH FLOOR	Project Number 508-17-101
	TOLAND MIZELL MOLNAR 590 MEANS STREET NW STE. 200 ATLANTA, GA 30318	STATE OF GEORGIA REGISTERED ARCHITECT	VA U.S. Department of Veterans Affairs	Approved: Project Director	FULLY SPRINKLERED	Location Atlanta VA Medical Center - Atlanta, Ga.	Drawing Number A801