

5TH FLOOR RCP DEMO LEGEND

(NOT ALL SYMBOLS USED AT ALL SHEETS)

- LAY-IN LIGHT FIXTURES
- RECESSED CAN LIGHT - SEE ELECTRICAL
- SURFACE-MOUNTED LIGHT - SEE ELECTRICAL
- EXIT SIGN WITH DIRECTION ARROW(S)
- SPRINKLER HEAD - SEE FIRE PROTECTION
- SUPPLY / RETURN GRILLE - SEE MECHANICAL
- SLOTTED SUPPLY AIR DIFFUSER
- DEMO ACT GRID
- DEMO GYP BD CEILING/SOFFT
- P.A. COMPONENT
- SMOKE DETECTOR
- CEILING-MOUNTED SECURITY EQUIPMENT
- CEILING-MOUNTED MOTION DETECTION EQUIP.
- CEILING-MOUNTED PRIVACY COMPONENTS
- LIMITS OF EXISTING 2 HR FIRE WALLS
- NOT IN CONTRACT AREAS (NIC)

5TH FLOOR RCP DEMO NOTES

- A. IN ALL ROOMS SHOWN TO BE DEMOLISHED, REMOVE ALL CEILING TILES AND GRID, GYP BULKHEADS AND ASSOCIATED FRAMING, CEILING FIXTURES AND EQUIPMENT UNO. REMOVE ALL ABANDONED WIRING TO ITS RESPECTIVE PANEL BOARD.
- B. CONTRACTOR SHALL MAINTAIN ALL FIRE-RATED ASSEMBLIES WITHIN THE PROJECT AREA DURING PERFORMANCE OF THE WORK.
- C. CONTRACTOR SHALL PROVIDE AND MAINTAIN ALL REQUIRED LIGHTING AND EXIT SIGNAGE REQUIRED FOR EGRESS WITHIN AND ADJACENT TO THE PROJECT AREA DURING PERFORMANCE OF THE WORK.
- D. CONFIRM BEFOREHAND WITH THE VA COR THE REMOVAL, SALVAGE, STORAGE AND POSSIBLE REUSE OF ALL EXIST CEILING SECURITY, WIFI, SMOKE DETECTORS, ETC.
- E. CONTRACTOR TO UTILIZE HEAT DETECTOR WIRE IN AREAS OF CONSTRUCTION WHERE FIRE ALARM IS NOT FULLY FUNCTIONAL.

5TH FLOOR RCP DEMO KEYNOTES

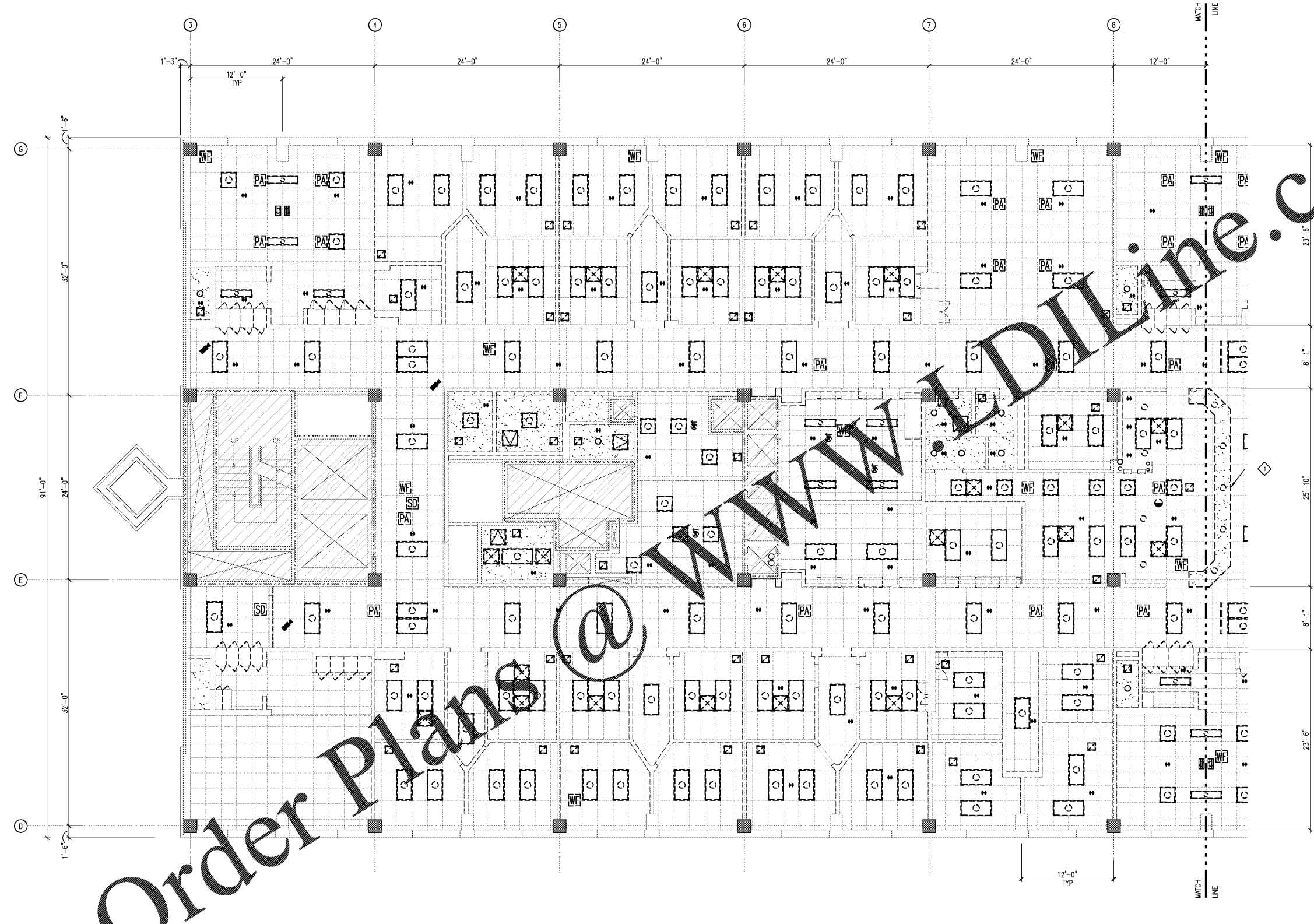
RCP DEMOLITION PLAN KEY NOTES
(ALL NOTES NOT USED ON ALL SHEETS)

- DEMOLISH W/L FRAMING AND GYP BD BULKHEAD/SOFFT

PLAN NORTH TRUE NORTH

SCALE: 3/16"=1'-0"

KEY PLAN



Order Plans @ www.dline.com

1 FIFTH FLOOR ENLARGED DEMO RCP - ZONE A
A/E104/3/16" = 1'-0"

<p>Revisions:</p> <table border="1" style="width: 100%; border-collapse: collapse;"> <tr><td style="width: 50px; height: 15px;"> </td><td style="width: 50px; height: 15px;"> </td></tr> <tr><td style="width: 50px; height: 15px;"> </td><td style="width: 50px; height: 15px;"> </td></tr> <tr><td style="width: 50px; height: 15px;"> </td><td style="width: 50px; height: 15px;"> </td></tr> <tr><td style="width: 50px; height: 15px;"> </td><td style="width: 50px; height: 15px;"> </td></tr> <tr><td style="width: 50px; height: 15px;"> </td><td style="width: 50px; height: 15px;"> </td></tr> <tr><td style="width: 50px; height: 15px;"> </td><td style="width: 50px; height: 15px;"> </td></tr> <tr><td style="width: 50px; height: 15px;"> </td><td style="width: 50px; height: 15px;"> </td></tr> <tr><td style="width: 50px; height: 15px;"> </td><td style="width: 50px; height: 15px;"> </td></tr> <tr><td style="width: 50px; height: 15px;"> </td><td style="width: 50px; height: 15px;"> </td></tr> <tr><td style="width: 50px; height: 15px;"> </td><td style="width: 50px; height: 15px;"> </td></tr> </table> <p>Date:</p>																					<p>CONSULTANT</p>	<p>ARCHITECT/ENGINEER OF RECORD</p> <p>590 MEANS STREET NW STE. 200 ATLANTA, GA 30318</p>	<p>STAMP</p>	<p>Office of Construction and Facilities Management</p> <p>VA U.S. Department of Veterans Affairs</p>	<p>Drawing Title</p> <p>FIFTH FLOOR DEMO RCP - ZONE A</p> <p>Approved: Project Director</p>	<p>Phase</p> <p>FINAL SUBMITTAL</p> <p>FULLY SPRINKLERED</p>	<p>Project Title</p> <p>RENOVATE GERIATRIC-MED-PSYCH INPATIENT 5TH FLOOR</p> <p>Location</p> <p>Atlanta VA Medical Center - Atlanta, Ga.</p> <p>Issue Date</p> <p>06-07-2019</p>	<p>Project Number</p> <p>508-17-101</p> <p>Building Number</p> <p>Bldg C: Main Tower</p> <p>Drawing Number</p> <p>AD104</p>