



JOB NO. L1907

NORWOOD ARCHITECTS
807 FORREST ST. N.W.
ATLANTA, GEORGIA 30318
PH: 678-921-0302 FAX: 678-921-0301 WWW.NORWOODARCHITECTS.COM

HUDDLE HOUSE
EVO 2000 RESTAURANT
2029 HWY 78 E JASPER, AL
WALKER CO. 35501

NO. ISSUE DATE
PERMIT SET
07/12/2019

DRAWING NUMBER
DOOR & WINDOW
TYPES AND
SCHEDULES

A600

DOOR SCHEDULE

DOOR #	LOCATION	DOOR MATERIAL	TYPE	WIDTH	HEIGHT	THICKNESS	FRAME	FRAME TYPE	HEAD	JAMB	THRESHOLD	DOOR FINISH	FRAME FINISH	GLAZING	HW. SET #	REMARKS		
1	ENTRY VESTIBULE	ALUM. W/ INSL. TEMPERED GLASS	A	3'-0"	7'-0"	1 3/4"	STOREFRONT	◆	3/A601	4,5/A601 & 6,7/A601	Y	SF-01	SF-01	INSUL. TINTED TEMPERED GLASS	HW01			
2	ENTRY VESTIBULE	ALUM. W/ INSL. TEMPERED GLASS	A	3'-0"	7'-0"	1 3/4"	STOREFRONT	◆	3/A601	4,5/A601 & 6,7/A601	Y	SF-01	SF-01	INSUL. TINTED TEMPERED GLASS	HW01			
3	ENTRY VESTIBULE	ALUM. W/ INSL. TEMPERED GLASS	B	3'-0"	7'-0"	1 3/4"	STOREFRONT	◆	5/A602	9,10/A601 SIM.	N/A	PT-01	SF-01	PREFIN. TEMPERED GLASS	HW02			
4	KITCHEN EXIT	HOLLOW METAL	D	3'-6"	7'-0"	1 3/4"	HOLLOW MTL.	D	8/A601	9,10/A601	Y	PT-03	EF-12	PT-03	EF-12	PEEK HOLE		
5	OFFICE	HOLLOW METAL W/ WIRE GLASS	E	2'-8"	7'-0"	1 3/4"	HOLLOW MTL.	E	13/A602	14/A602	N/A	PT-03	PT-03	PT-03	PT-03	WIRE GLASS	HW05	UNDERCUT DOOR 1"
6	MEN'S RESTROOM	WOOD	F	3'-0"	7'-0"	1 3/4"	HOLLOW MTL.	F	9/A602	10/A602	N/A	PT-01	PT-01	PT-01	PT-01	N/A	HW06	UNDERCUT DOOR 1"
7	WOMEN'S RESTROOM	WOOD	F	3'-0"	7'-0"	1 3/4"	HOLLOW MTL.	F	9/A602	10/A602	N/A	PT-01	PT-01	PT-01	PT-01	N/A	HW06	UNDERCUT DOOR 1"
8	EXIT	HOLLOW METAL	C	3'-0"	7'-0"	1 3/4"	HOLLOW MTL.	C	3/A601	9,10/A601	Y	PT-03	EF-12	PT-03	EF-12	N/A	HW03	
9	BACKBAR/COOKLINE	H.P. LAM.	G	(2) 2'-3"	3'-0"	1"	N/A	G	-	15/A602	N/A	P.L.A.M.	P.L.A.M.	S.S.	S.S.	N/A	-	SEE NOTE #5

NOTES:

1. ALL HANDLES FOR LOCK SETS OF SWING DOORS SHALL BE LEVER TYPE (SCHLAGE OR EQUAL)
2. DOORS 1,2,8 AND 4 TO HAVE MASTER KEY ACCESS (MASTER KEY TO OPEN DOOR 5 ONLY)
3. PROVIDE ADA APPROVED SIGNAGE AT RESTROOM DOORS; SIGNS SHALL INCORPORATE RAISED & BRAILLE CHARACTERS & SYMBOLS; INSTALL ON WALLS ADJACENT TO THE LATCH SIDE OF RESTROOM DOOR, MOUNT W/ CENTERLINE OF SIGN @ 60" ABOVE FINISHED FLOOR
4. DOOR # 9: ELIASON LWP CAFE (VERIFY MOUNTING HEIGHT IN FIELD). HARDWARE IS PROVIDED BY DOORARY DOORS.

DOOR HARDWARE SCHEDULE

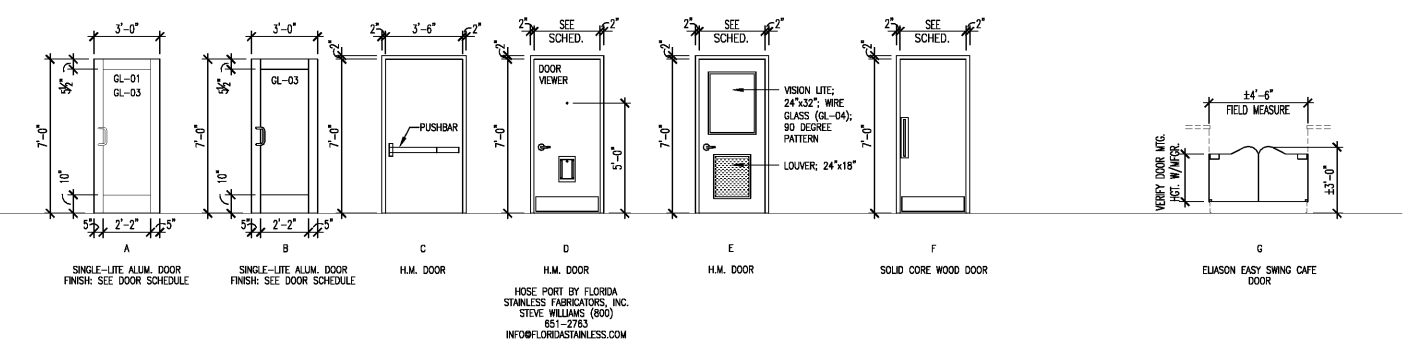
HARDWARE SET	DESCRIPTION	QTY	UNIT	MANUFACTURER	REMARKS
HARDWARE SET HW01	SINGLE 3' x 7' ALUM. DOORS x ALUM. FRAME				
(3)	OFFSET PIVOT HINGES	OP400 (SET)		ALUMINUM	
(1)	LOOKSET	MS1850SINSIDE THUMB LK		ALUMINUM	
(1)	OFFSET PULL	PRO32x9"		US28	US ALUMINUM
(1)	PUSH BAR	PRO31		US28	US ALUMINUM
(1)	SURFACE MTD. CLOSER	4040		US28	US ALUMINUM
(1)	WEATHER STRIPPING	2525C		NATIONAL GUARD	
(1)	SNEEP	2025A		NATIONAL GUARD	
(1)	THRESHOLD	315		NATIONAL GUARD	
(1)	DRIP CAP	16A		NATIONAL GUARD	
HARDWARE SET HW02	SINGLE 3' x 7' ALUM. DOORS x ALUM. FRAME				
(3)	OFFSET PIVOT HINGES	OP400 (SET)		ALUMINUM	
(1)	LOOKSET	MS1850SINSIDE THUMB LK		ALUMINUM	
(1)	OFFSET PULL	PRO32x9"		US28	US ALUMINUM
(1)	PUSH BAR	PRO31		US28	US ALUMINUM
(1)	SURFACE MTD. CLOSER	4040		US28	US ALUMINUM
(1)	WEATHER STRIPPING	2525C		NATIONAL GUARD	
(1)	SNEEP	2025A		NATIONAL GUARD	
(1)	THRESHOLD	315		NATIONAL GUARD	
(1)	DRIP CAP	16A		NATIONAL GUARD	
HARDWARE SET HW03	SINGLE 3'-6" x 7' H.M. DOOR x H.M. FRAME				
(3)	FULL MORTISE HINGES	BB1168 4 1/2" x 4 1/2" x NRP	260	HAGER	
(1)	EXIT DEVICE	GUARD-X EXIT ALARM		VON DUPRIN	
(1)	CLOSER	CLP-8301		NORTON	
(1)	KICKPLATE	8400 x 12" x 40"		US260	MES
(1)	WEATHERSTRIP	2525C		NATIONAL GUARD	
(1)	THRESHOLD	315 x 42"		NATIONAL GUARD	
HARDWARE SET HW04	SINGLE 3'-6" x 7' H.M. DOOR x H.M. FRAME				
(1)	CONTINUOUS HINGES	CFM83HD GEAR HINGE		PEMKO	
(1)	EXIT DEVICE	GUARD-X EXIT ALARM		VON DUPRIN	
(1)	CLOSER	CLP-8301		NORTON	
(1)	KICKPLATE	8400 x 12" x 40"		US260	MES
(1)	WEATHER STRIPPING	2525C		NATIONAL GUARD	
(1)	THRESHOLD	315 x 36"		NATIONAL GUARD	
(1)	DOOR VIEWER	698		US260	MES
(1)	BOTTOM SEAL	2029A		NATIONAL GUARD	

GENERAL NOTES

- A. PROVIDE DOOR STOPS AT ALL DOORS & WALL BUMPERS WHERE REQUIRED AGAINST ADJACENT WALL
- B. ALL H.M. DOOR FRAMES (EXTERIOR & INTERIOR) TO BE 16 GA. GALVANIZED WHERE EXPOSED TO WEATHER (U.N.O.)
- C. ALL HOLLOW METAL DOORS TO BE 18 GA. GALV. FLUSH; EXTERIOR DOORS TO BE INSULATED
- D. SEE FINISH SCHEDULE FOR PAINT & STAIN COLORS & BRANDS
- E. ALL DOOR CLOSERS SHALL BE THRU-BOLTED
- F. ALL SPACERS IN ALUMINUM STOREFRONT GLASS SHALL MATCH FRAME COLOR

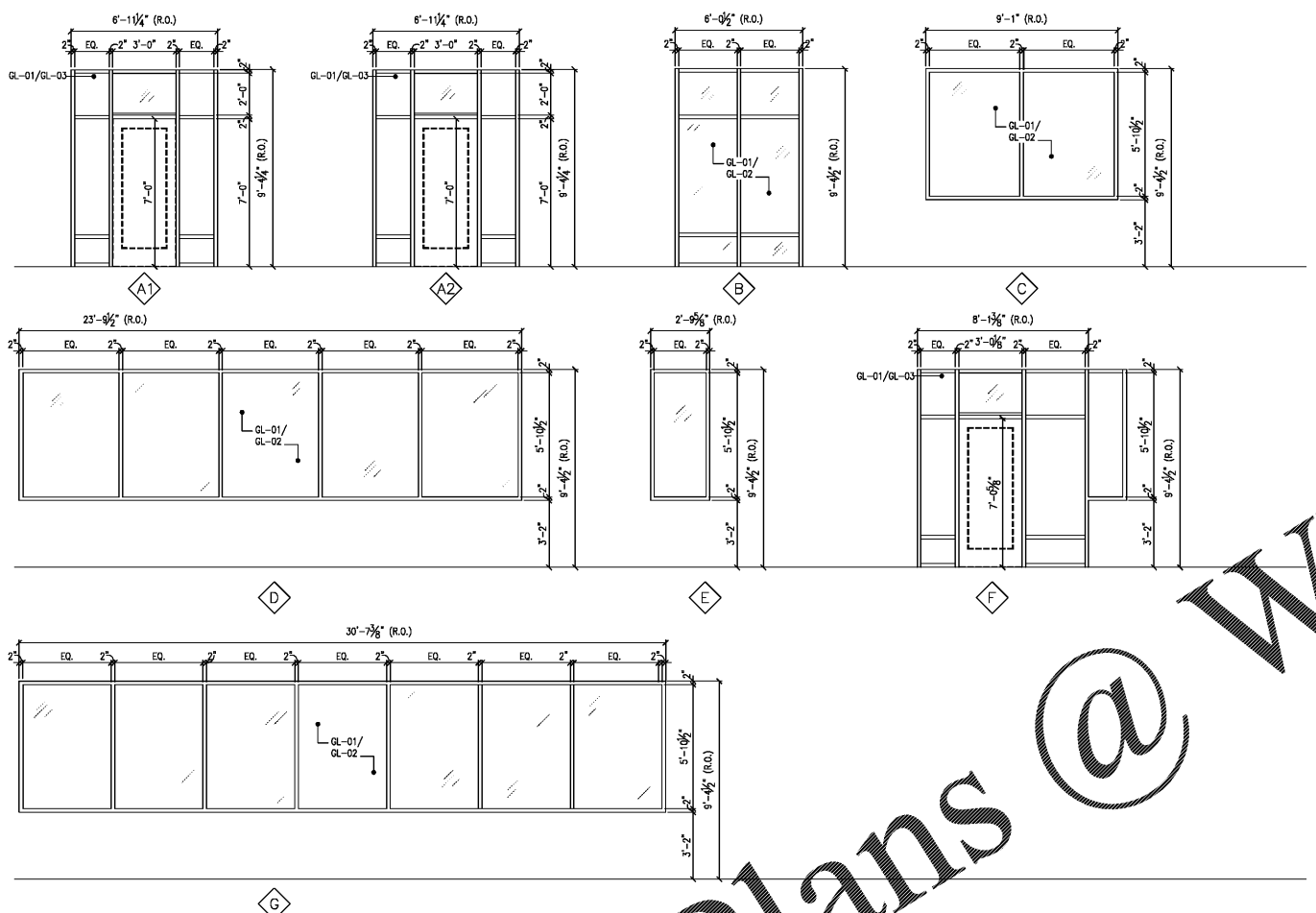
GLAZING NOTES

- GL-01 CLEAR WINDOW GLASS INSULATED LOW-E TRULITE
- GL-02 CLEAR, FLOAT GLASS
- GL-03 CLEAR, TEMPERED GLASS
- GL-04 WIRE GLASS, 90 DEGREE PATTERN U.N.O.



DOOR/FRAME ELEVATIONS

SCALE: 1/4"=1'-0"



WINDOW ELEVATIONS

SCALE: 1/4"=1'-0"

Order Plans @ WWW.IDLINE.COM