



JOB NO. LI907

NORWOOD ARCHITECTS  
807 Forest St. N.W.  
Atlanta, Georgia 30318  
PH: 678-921-0302 FAX: 678-921-0301 www.norwoodarchitects.com

**HUDDLE HOUSE**  
EVO 2000 RESTAURANT  
2029 HWY 78 E JASPER, AL  
WALKER CO. 35501

NO.	ISSUE DATE
	PERMIT SET 07/12/2019

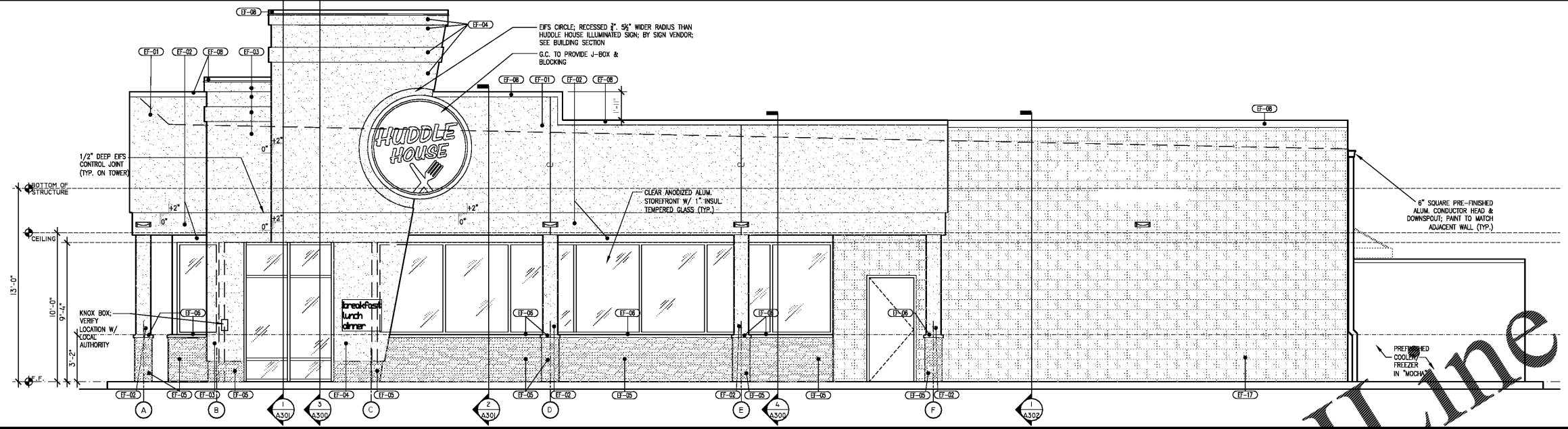
DRAWING NUMBER

**A200**

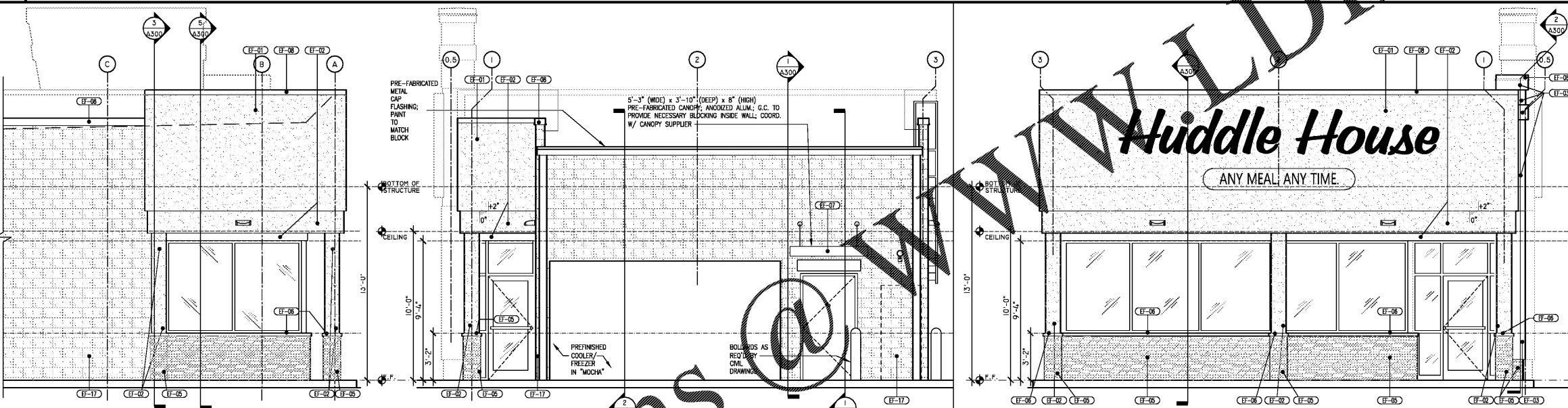
**EXTERIOR FINISH LEGEND**  
SEE SHEET A003 FOR FINISH SCHEDULE

**GENERAL NOTES**

- DIMENSIONS ARE FROM FINISH FLOOR.
  - SEE A101 FOR LIGHT FIXTURE LOCATIONS; SEE ELECTRICAL FOR FIXTURE TYPES & REQUIREMENTS.
  - ELECTRICAL OUTLET MOUNTING HEIGHTS PER ELECTRICAL DWGS.
  - EXTERIOR WALL COLORS TO MATCH SHOWN WILLIAMS PAINT.
  - PRE-FINISHED METAL COPING; COLOR AS NOTED ON EXTERIOR ELEVATIONS; SEE COLOR SPECIFICATION LEGEND, A003.
- EIFS NOTES:
- EIFS SYSTEM TO BE "OUTSULATION PLUS MD" BY "DRYVIT SYSTEMS" W/ 1-1/2" THICK INSULATION UNLESS OTHERWISE NOTED. SEE ENTRY TOWER THICKNESS OVER 1-3/4".
  - FOR FINISH COLORS SEE COLOR SPECIFICATION LEGEND, A003.
- METAL COPINGS:
- WELDED 2" X 8" ALUMINUM FRAME W/ 0.063 ALUMINUM FASCIA FINISHED TO MATCH STOREFRONT SYSTEM FINISH.
  - G.C. TO COORDINATE W/ METAL CANOPY SUPPLIER & PROVIDE NECESSARY BLOCKING TO SECURE CANOPIES TO WALL TRIMMING.
  - G.C. TO COORDINATE CANOPY LIGHTING W/ SUPPLIER.
- STOREFRONT / WINDOW:
- CLEAR ANODIZED FINISH ON ALUMINUM FRAMES.
  - 2" WIDE X 4-1/2" DEEP X 1" INSULATING CLEAR GLASS (TYP.).
  - US ALUMINUM SERIES 4515F; SEE A000 SERIES DRAWINGS.
- NOTE:  
COORDINATE INSULATED GLASS & SHADING COEFFICIENT W/ EC REQUIREMENTS



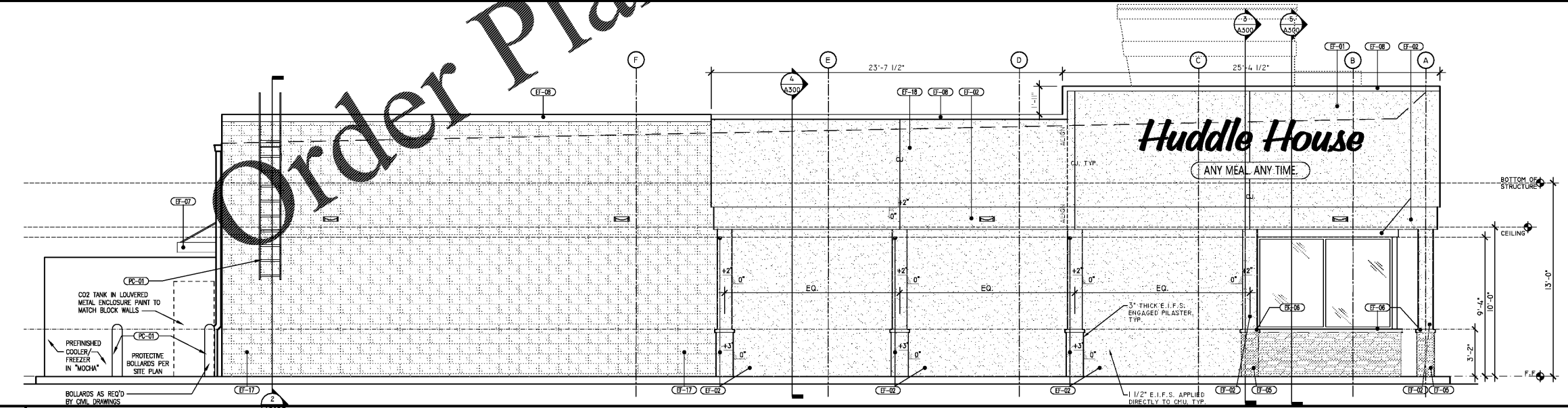
**1 ENTRY ELEVATION**  
SCALE: 1/4"=1'-0"



**4 BACK ELEV. OPTN PER OWNER**  
SCALE: 1/4"=1'-0"

**3 SERVICE END ELEVATION**  
SCALE: 1/4"=1'-0"

**2 FRONT END ELEVATION**  
SCALE: 1/4"=1'-0"



**5 BACK ELEVATION**  
SCALE: 1/4"=1'-0"

EXTERIOR ELEVATIONS

Order Plans @ [www.WALWORLDLINE.com](http://www.WALWORLDLINE.com)