

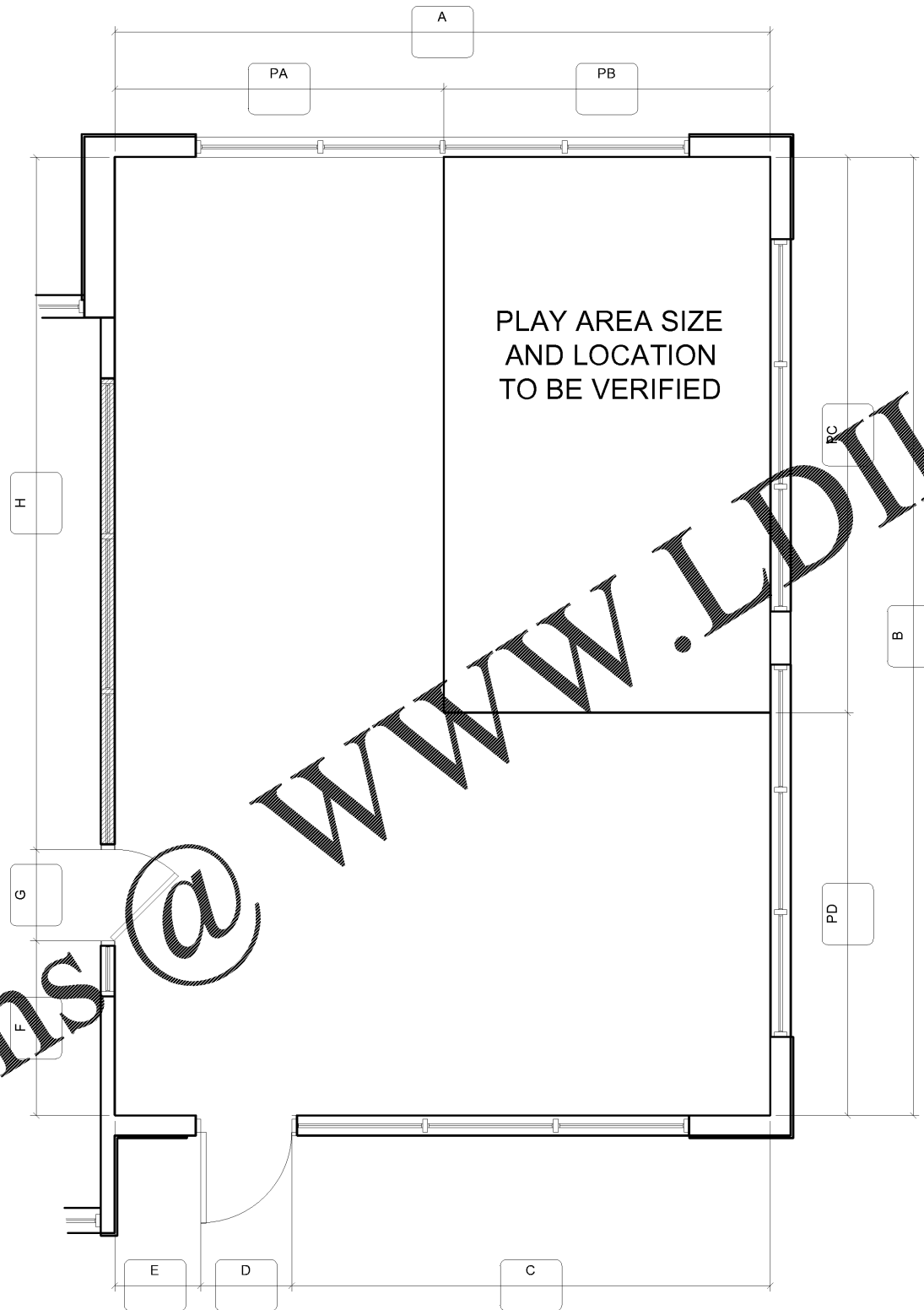
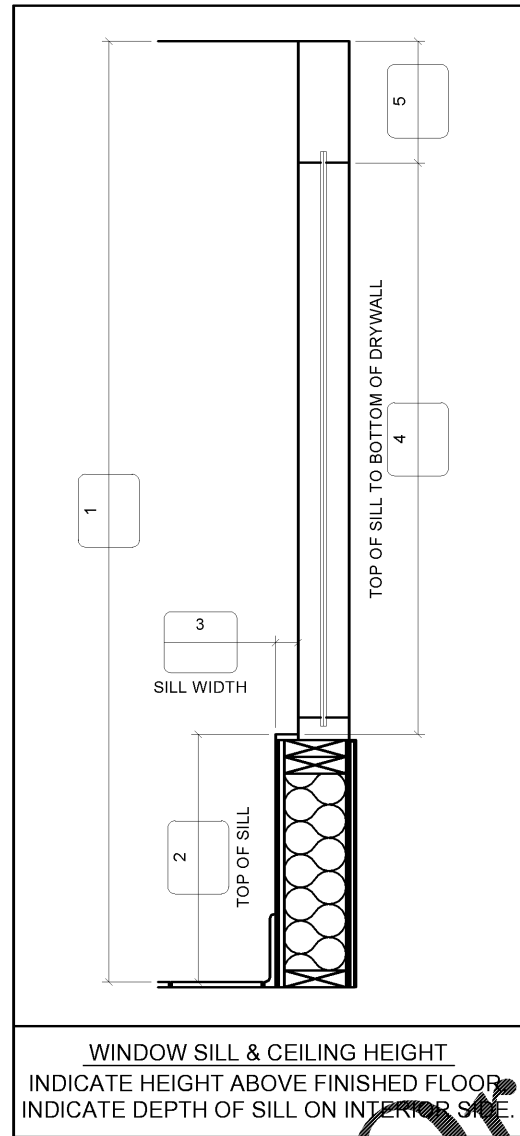
PLEASE PROVIDE THE INFORMATION REQUESTED BELOW  
IN CASE THERE ARE ANY QUESTIONS ABOUT DIMENSIONS.

CONTACT: \_\_\_\_\_

PHONE #: \_\_\_\_\_

DIMS ARE FROM:

- STUD TO STUD
- DRYWALL TO DRYWALL



PLACE REQUIRED DIMENSIONS IN LETTERED BOXES.  
PLEASE INDICATE OR NOTIFY FCC REGARDING CHANGES  
OR MODIFICATIONS TO THE BUILDING; SUCH AS:  
DOOR LOCATIONS, VESTIBULE(S), FURRING & WINDOWS.



FCC COMMERCIAL FURNITURE INC.  
8452 OLD HWY 99 N. ROSEBURG, OR 97470 USA  
T. 800.322.7328 | F. 541.673.7441 | WWW.FCCFURN.COM  
DESIGNED AND BUILT IN U.S.A.

PROPERTY OF FCC COMMERCIAL FURNITURE  
THIS IS A FOR DESIGN PURPOSE TO EXPRESS DESIGN  
CONCEPTS TO THE ARCHITECT, CLIENT, CONTRACTOR  
AND INSTALLER FOR THE PROJECT SHOWN. THIS DESIGN  
AND THE CONCEPTS HEREIN SHALL  
NOT BE ALTERED OR USED AS CONSTRUCTION  
DOCUMENTS. DO NOT REPRODUCE OR LEND WITHOUT  
WRITTEN PERMISSION FROM FCC COMMERCIAL  
FURNITURE INC.

**IMPORTANT**

WRITTEN DIMENSIONS HAVE PRECEDENCE OVER SCALE  
IN ALL CASES.

**DO NOT SCALE OFF PLANS.** CONTACT FCC COMMERCIAL  
FURNITURE'S REPRESENTATIVE TO VERIFY ANY  
QUESTIONABLE DIMENSIONS AT TELEPHONE #  
800.322.7328

THE GENERAL CONTRACTOR MUST VERIFY ALL BUILDING  
DIMENSIONS, EQUIPMENT, FURNITURE PLACEMENT,  
UTILITY LOCATIONS, AND CONDITIONS AT THE JOB SITE.

THE GENERAL CONTRACTOR MUST NOTIFY FCC  
COMMERCIAL FURNITURE OF ALL DISCREPANCIES  
AND/OR REQUIRED ADJUSTMENTS PRIOR TO STARTING  
WORK.

FCC COMMERCIAL FURNITURE HAS PREPARED THESE  
DOCUMENTS AS ACCURATELY AS POSSIBLE WITH THE  
ARCHITECTURAL INFORMATION PROVIDED. DUE TO LACK  
OF ACCURATE AND COMPLETE DIMENSIONED  
ARCHITECTURAL PLANS, OWNER UNDERSTANDS THAT  
ADJUSTMENTS TO THE FINAL LOCATIONS OF EQUIPMENT  
AND/OR FURNITURE PLACEMENT MAY BE REQUIRED AT  
THE OWNER'S EXPENSE DUE TO DISCREPANCIES BASED  
ON ACTUAL JOB SITE DIMENSIONS AND CONDITIONS.

REFER TO ARCHITECTURAL OR ENGINEER DRAWINGS  
FOR COMPLETE AND ACCURATE DIMENSIONS OF  
BUILDING STRUCTURE.

THESE CONTRACT DOCUMENTS AND THE INFORMATION  
THEY CONTAIN ARE THE PROPERTY OF FCC COMMERCIAL  
FURNITURE INC., ROSEBURG, OREGON, 97470.

ALL PREPARED CONTRACT DOCUMENTS MAY NOT BE  
COPIED, REPRODUCED, USED OR IMPLEMENTED IN ANY  
WAY, IN PART OR IN WHOLE, WITHOUT THE EXPRESS  
WRITTEN CONSENT OF FCC COMMERCIAL FURNITURE INC.

ANY UNAUTHORIZED USE OF THESE PLANS WILL RESULT  
IN PAYMENT DUE FOR SERVICES RENDERED BY FCC  
COMMERCIAL FURNITURE INC.

ANY DEVIATIONS FROM THESE DRAWINGS FOR ANY  
REASON SHALL NOT BE DONE WITHOUT CONSENT OF FCC  
COMMERCIAL FURNITURE INC. IN ADVANCE. IN WRITING.  
FCC COMMERCIAL FURNITURE IS NOT RESPONSIBLE FOR  
DEVIATIONS, CHANGES, ADDITIONS, OR DELETIONS NOT  
REVIEWED AND APPROVED IN ADVANCE BY FCC  
COMMERCIAL FURNITURE INC.

THESE DOCUMENTS REFLECT SPECIFIC SEATING AND  
DECOR EQUIPMENT ORDERED OF DATE SHOWN BELOW.

CLIENT:



Burger King #15499  
13049 N Main St.  
Jacksonville, FL 32218  
Decor: Garden Grill  
Building Type: Custom

CUSTOMER  
Premier King

SHEET TITLE:  
VERIFICATION PLAN

WORK ORDER NUMBER:

FINALS BY:

DRAWN BY:  
JOSHUA LONG  
SCALE:  
NTS

ORIGINAL DATE:  
June 4, 2019

PLOT DATE:  
June 12, 2019

PROJECT #:  
**20383-001**

SHEET #:  
**D9.1**