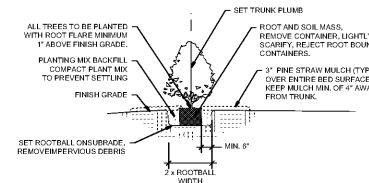
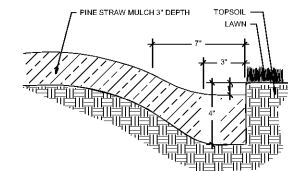


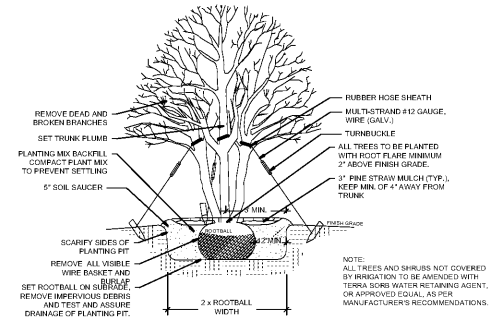
4 TYPICAL STAGGERED ROW SPACING
NOT TO SCALE



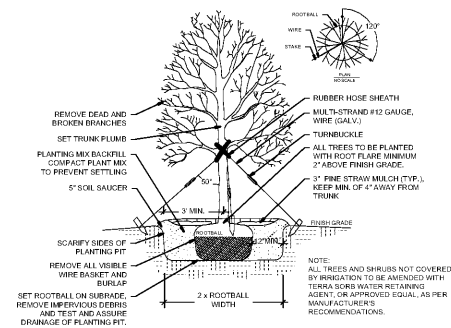
5 TYPICAL CONTAINER SHRUB PLANTING DETAIL
NOT TO SCALE



6 TRENCH EDGE FOR ALL PLANT BEDS
NOT TO SCALE



2 MULTI TRUNK TREE PLANTING DETAIL
NOT TO SCALE



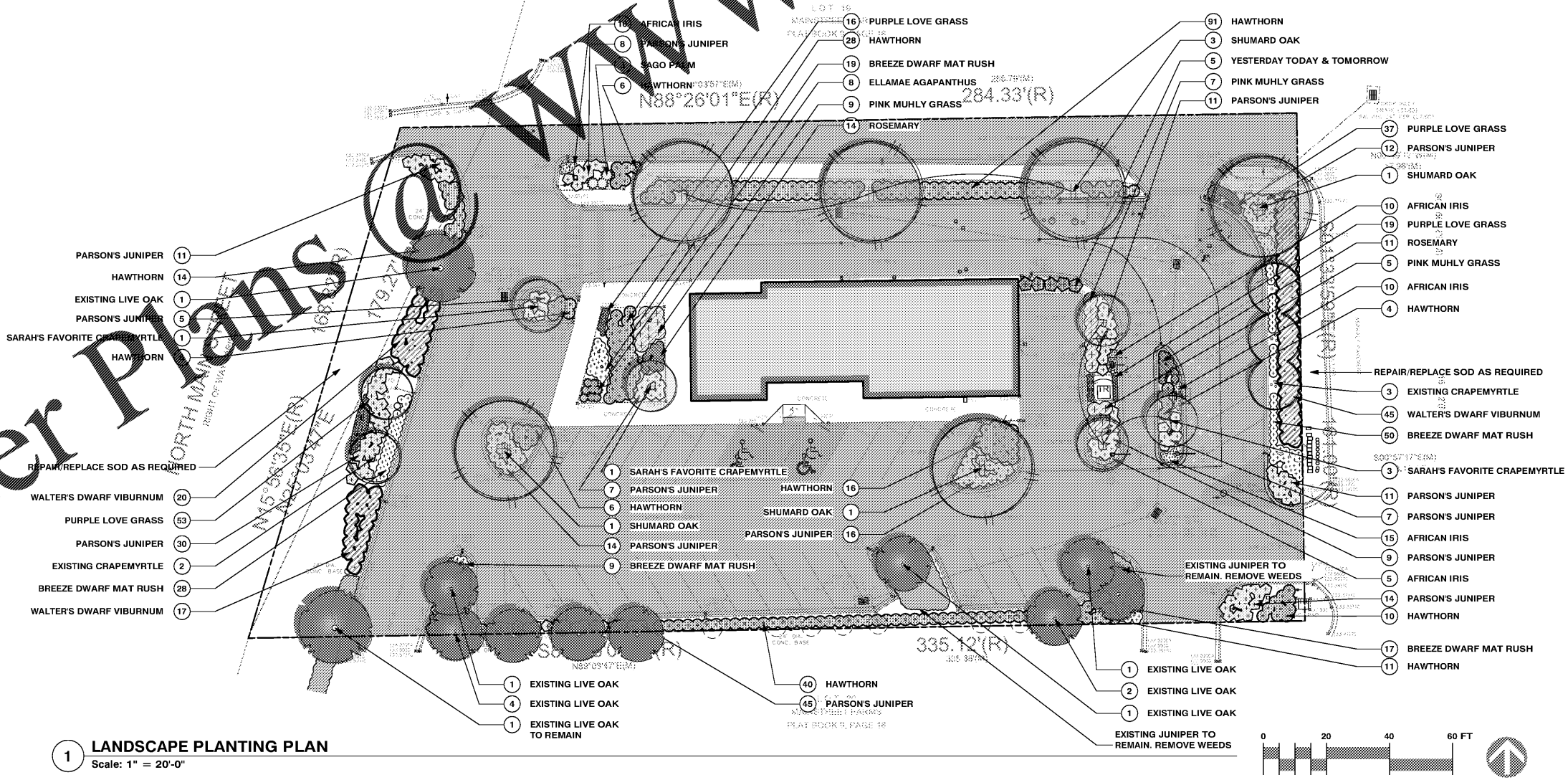
3 TYPICAL TREE PLANTING AND GUYING DETAIL
NOT TO SCALE

GENERAL NOTES

- CONTRACTOR SHALL BE RESPONSIBLE FOR THE SITE INSPECTION PRIOR TO LANDSCAPE CONSTRUCTION AND INSTALLATION IN ORDER TO ACQUAINT HIMSELF WITH EXISTING CONDITIONS.
- THE LOCATION OF ALL SURFACE AND UNDERGROUND STRUCTURES AND UTILITIES SHALL BE VERIFIED BY THE CONTRACTOR AT GROUND BREAK. THE CONTRACTOR SHALL BE RESPONSIBLE FOR PROTECTING ALL EXISTING STRUCTURES AND UTILITIES TO REMAIN FROM DAMAGE AS REQUIRED DURING CONSTRUCTION, AND TO REPAIR ANY DAMAGE WHICH SHOULD OCCUR TO THE SATISFACTION OF THE OWNER AND/OR DAMAGED PARTY
- CONTRACTOR SHALL VERIFY PLANT COUNT FROM PLAN AND REPORT DIFFERENCES PRIOR TO CONSTRUCTION.
- ALL PLANTING AREAS SHALL BE FREE OF OBSTRUCTIONS LARGER THAN 1 1/2" IN SIZE.
- ALL TREE SAND SPECIMEN PLANT MATERIAL SHALL BE LOCATED BY THE CONTRACTOR AT APPROVED NURSERIES OR THEIR EQUAL APPROVED PRIOR TO BIDDING.
- ALL PLANT MATERIALS ARE SUBJECT TO APPROVAL OR REFUSAL BY THE LANDSCAPE ARCHITECT AT THE JOB SITE.
- THE LOCATION OF ALL TREES SHALL BE APPROVED BY THE LANDSCAPE ARCHITECT BEFORE THE PREPARATION OF BEDS. PLANTING SHALL BE LOCATED WHERE SHOWN ON THE DRAWINGS OR WHERE FIELD LOCATED BY THE LANDSCAPE ARCHITECT.
- THE LOCATION OF ALL PLANTING BEDS SHALL BE APPROVED BY LANDSCAPE ARCHITECT BEFORE THE PREPARATION OF BEDS PLANTING SHALL BE LOCATED WHERE SHOWN ON THE DRAWINGS OR WHERE FIELD LOCATED BY LANDSCAPE ARCHITECT A MINIMUM 72 HOUR NOTICE SHOULD BE GIVEN AND ANTICIPATED BY THE CONTRACTOR FOR THIS REVIEW.
- MINIMIZE ALL ROOT DISTURBANCE WITHIN THE DRIP LINE OF EXISTING TREES.
- CONTRACTOR SHALL SUPPLY AND SPREAD 6" TOPSOIL IN SHRUB BEDS AND ALL AREAS TO BE SEEDED, UNLESS OTHERWISE NOTED IN SPECIFICATIONS.
- THE LANDSCAPE CONTRACTOR SHALL PROVIDE APPROVED TOPSOIL TO PERFORM INCIDENTAL GRADING WORK.
- CONTRACTOR SHALL BE RESPONSIBLE FOR PROVIDING POSITIVE DRAINAGE IN ALL PLANT AREAS.
- PLANTS SHALL BE WELL-FORMED, VIGOROUS, GROWING SPECIMENS WITH GROWTH TYPICAL OF VARIETIES SPECIFIED, AND SHALL BE FREE FROM INJURY, INSECTS, AND DISEASES. PLANTS SHALL EQUAL OR SURPASS QUALITY AS DEFINED IN THE CURRENT ISSUE OF "AMERICAN STANDARDS FOR NURSERY STOCK" AS PUBLISHED BY AMERICANHORT.ORG.
- ALL PLANT MATERIAL SHALL BE BALLED AND BURLAPPED OR CONTAINER GROWN.
- ALL SHRUBS, TREES, AND GROUNDCOVERS SHALL BE PLANTED WITH A SOIL MIXTURE CONSISTING OF 50% TOPSOIL AND ORGANIC MATERIAL AND PER SPECIFICATIONS.
- FRONT ROW OF SHRUBS SHALL BE PLANTED MINIMUM 24" BEHIND BEDLINE AT LAWNS OR WALKS, AND MINIMUM 36" FROM BACK OF CURB AT PARKING AREAS.
- BACK ROW OF SHRUB PLANTING SHALL BE PLANTED AT 36" OFF FACE OF BUILDING WALL. GROUNDCOVERS SHALL BE 12" OUT FROM BUILDING WALL AS REQUIRED BY PLANT SPECIFICATIONS.
- EXCAVATE EDGE OF ALL PLANTING BEDS TO 4" DEPTH TO FORM NEAT, CRISP DEFINITION.
- ALL PLANTING BEDS AND TREE PITS SHALL BE MULCHED WITH A 3" SETTLED LAYER OF PINESTRAW.
- MULCH ALL AREAS OF ANNUALS AND SPREADING GROUNDCOVERS HAS PLANTING WITH 3" OF DOUBLE-HAMMERED BROWN MULCH.
- GRASS: ALL AREAS TO BE GRASSED SHALL BE TYPED AND GRADED TO A DEPTH OF 6". SLAG OF LIME SHALL BE APPLIED AT A RATE OF 100 POUNDS PER 1,000 SQ. FT. ADD TOP DRESSING (12-5-8 SLOW RATE) AT A RATE OF 50 POUNDS PER 1,000 SQ. FT. SEEDED AREAS SHALL BE COVERED WITH A THIN LAYER OF WHEAT STRAW.
- ALL DISTURBED AREAS NOT PLANTED WITH SHRUBS, TREES, OR SOD, SHALL BE SEEDED.
- GRADE ALL AREAS FOR APPROVAL BY LANDSCAPE ARCHITECT BEFORE SODDING.
- SEASONAL COLOR SHALL BE PLANTED IN FLOWERING STATE.
- CONTRACTOR SHALL GUARANTEE ALL PLANT MATERIAL, INCLUDING GRASS, FOR ONE FULL YEAR FROM DATE OF SUBSTANTIAL COMPLETION.
- REMOVE ALL GUY WIRES AND STAKE AT END OF GUARANTEE PERIOD.
- WHEN TREES ARE PLANTED THE MONTHS OF MARCH THROUGH OCTOBER, THE LANDSCAPE CONTRACTOR SHALL AMEND THE SOIL MIX WITH A MOISTURE RETENTION AGENT (TERRA-SORB OR EQUAL) FOR EACH TREE INSTALLATION.
- ALL TREES AND SHRUBS NOT COVERED BY IRRIGATION TO BE AMENDED WITH "TERRA-SORB" WATER RETAINING AGENT, OR APPROVED EQUAL, PER MANUFACTURER'S RECOMMENDATIONS.

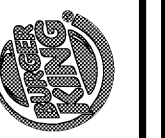
PLANTING SCHEDULE

Trees						
Quantity	Botanical Name	Common Name	Root	Scheduled Size	Spacing	Comments
5	Lagerstroemia indica x fauriei 'Sarah's Favorite'	SARAH'S FAVORITE CRAPEMYRTLE	B&B	2 1/2 - 3" cal.	10' o.c.	Match existing
6	Quercus shumardii	SHUMARD OAK	B&B	2 1/2 - 3" cal.	10' o.c.	Match existing
Palms & Cycads						
Quantity	Botanical Name	Common Name	Root	Scheduled Size	Spacing	Comments
3	Cycas revoluta	SAGO PALM	Cont.	24" spread	10' o.c.	
Shrubs						
Quantity	Botanical Name	Common Name	Root	Scheduled Size	Spacing	Comments
5	Brunfelsia pauciflora 'Floribunda'	YESTERDAY TODAY & TOMORROW	Cont.	18"-24" spread	40' o.c.	
200	Juniperus chinensis Parsonii	PARSON'S JUNIPER	Cont.	15"-18" spread	30' o.c.	
232	Rhaphiolepis indica 'Monart'	HAWTHORN	Cont.	15"-18" spread	30' o.c.	
25	Rosmarinus officinalis 'Roman Beauty'	ROSEMARY	Cont.	1 gal.	20' o.c.	Full containers
82	Viburnum obovatum 'Densa'	WALTERS DWARF VIBURNUM	Cont.	15"-18" spread	36' o.c.	Full containers
Groundcovers, Ornamental Grasses & Turfgrass						
Quantity	Botanical Name	Common Name	Root	Scheduled Size	Spacing	Comments
8	Agapanthus 'Ellamae' P.P.# 7297	ELLAMAE AGAPANTHUS	Cont.	18"-24" spread	26' o.c.	
50	Dieris iridioides	AFRICAN IRIS	Cont.	1 gal.	13" o.c.	Full containers
125	Fragrostis spectabilis	PURPLE LOVE GRASS	Cont.	1 gal.	10" o.c.	Full containers
123	Lomandra longifolia 'P.P.# 15420'	BREEZE DWARF MAT RUSH	Cont.	1 gal.	20" o.c.	Full containers
21	Muhlybergia capillaris	PINK MUHLY GRASS	Cont.	1 gal.	36' o.c.	Full containers
	Match existing	Match existing	Sod			Sod any disturbed areas not otherwise shown to receive plant material



1 LANDSCAPE PLANTING PLAN
Scale: 1" = 20'-0"

DATE	02/29/19
REVISION	
BY	
CHECKED BY	ENH
DRAWN BY	MLJ



PREMIER KINGS, INC.
5227 CARRIAGE RD.
JACKSONVILLE, FL 32217
PHONE: (321) 312-0889

2126 Morris Avenue
Burlington, NC 27223
Phone: (704) 322-1251
Fax: (704) 322-1778
email: info@huckestein.com
www.huckestein.com

huckestein architects, PC
architecture • planning • interior design

PROJECT #19202.03
IMAGE 2020 - DECEMBER 2016 STANDARDS
BURGER KING - RENOVATION
13049 MAIN STREET N
JACKSONVILLE, FL 32218