

LANDSCAPE COMPLIANCE WORKSHEET					
CITY OF JACKSONVILLE, FLORIDA					
Authority: Chapter 656 Zoning Code, Part 12 Landscape and Buffer Regulations, Subpart C					
LOT AREA	49865.725 sq ft	ZONING	CCG-2 Community Commercial/General		
BUILDING AREA	3628.893 sq ft	USE	Fast Food Restaurant		
VEHICULAR USE AREA 80646.719 sq ft					
VUA PERIMETER - ROW	158,976 lin ft	REQ'D 1 TREE PER	50 lin ft	= 4 trees*	656.1215
	REQ'D PERIMETER AREA	10 sq ft / lin ft		1589.761 sq ft	
	PROVIDED PERIMETER AREA			1594.29 sq ft	
				SURPLUS/DEFICIT	4.529 sq ft
	PROVIDED TREES				
	PRESERVED TREES	2 10' ht. CRAPEMYRTLE		= 2 trees	credit x1
	PRESERVED TREES	2 6-7" LIVE OAK		= 6 trees	credit x3
VUA PERIMETER - SIDE	238.72 lin ft	REQ'D 1 TREE PER	50 lin ft	= 5 trees*	656.1215
	REQ'D PERIMETER AREA	5 sq ft / lin ft		1193.599 sq ft	
	PROVIDED PERIMETER AREA			1244.408 sq ft	
				SURPLUS/DEFICIT	50.808 sq ft
	PROVIDED TREES				
	PRESERVED TREES	4 4-5" LIVE OAK		= 8 trees	credit x2
VUA PERIMETER - REAR	104.538 lin ft	REQ'D 1 TREE PER	50 lin ft	= 3 trees*	656.1215
	REQ'D PERIMETER AREA	5 sq ft / lin ft		522.69 sq ft	
	PROVIDED PERIMETER AREA			506.594 sq ft	
				SURPLUS/DEFICIT	-16.095 sq ft
	PROVIDED TREES				
	PRESERVED TREES	3 10' ht. CRAPEMYRTLE		= 3 trees	credit x1
REQ'D PARKING	One space for each 4 seats, plus 1 space per two peak shift employees				656.604
PARKING PROVIDED	31 spaces				
REQUIRED INTERIOR LANDSCAPE AREA	10%	8064.672 sq ft			656.1214
PROVIDED INTERIOR LANDSCAPE AREA		7994.636 sq ft			
				SURPLUS/DEFICIT	-70.036 sq ft
TREE REQUIREMENTS					
1 TREE PLANTED OR PRESERVED PER	8000 sq ft	OF LOT AREA		= 7 trees	656.1211
1 INTERIOR TREE PER	4000 sq ft	OF VUA		= 21 trees*	656.1214
* may be counted toward lot area tree requirement					
	TOTAL TREES REQUIRED			= 28 trees	
	PRESERVED TREE CREDITS			= 25 trees	
	PROVIDED TREES			= 11 trees	
	EFFECTIVE TREES PROVIDED			= 36 trees	
PRESERVED TREES - PERIMETER					
Common name	Size	Quantity	Credit		
EXISTING CRAPEMYRTLE	8'-10' ht.	5	1		
EXISTING LIVE OAK	7" cal.	2	3		
EXISTING LIVE OAK	5-6" cal.	6	2		
PRESERVED TREES - INTERIOR					
Common name	Size	Quantity	Credit		
EXISTING LIVE OAK	5-6" cal.	3	2		
PROVIDED TREES - VUA INTERIOR					
Common name	Size	Quantity			
SHUMARD OAK	2 1/2 - 3" cal.	6			
SARAH'S FAVORITE CRAPE	2 1/2 - 3" cal.	5			
At least 50% of trees shall be shade trees.					
Trees shall be distributed so that all portions of the VUA are within a 55' radius of a tree.					

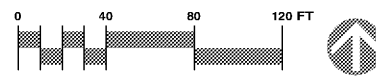
LANDSCAPE DEMOLITION AND TREE PROTECTION NOTES

1. PROTECT EXISTING TREES TO REMAIN FROM DAMAGE USING TREE PROTECTION FENCING OR OTHER MEANS APPROVED BY LANDSCAPE ARCHITECT.
2. TREE POSITIONS DETERMINED FROM AERIAL AND STREET VIEW PHOTOGRAPHY. VERIFY POSITIONS OF EXISTING TREES. VERIFY TREES NOTED TO BE REMOVED ARE ON OWNER'S PROPERTY. NOTIFY LANDSCAPE ARCHITECT OF ANY DISCREPANCIES.
3. REMOVE EXISTING SHRUBS COMPLETELY, INCLUDING ROOT MATERIAL. GRADE PLANTING AREAS AND ADD TOPSOIL AS REQUIRED TO PRODUCE POSITIVE DRAINAGE.
4. REPAIR EXISTING IRRIGATION SYSTEM, IF PRESENT, TO RETURN TO OPERATIONAL STATE FOLLOWING CURB AND PAVING RENOVATIONS. PROVIDE ADDITIONAL HEADS AS REQUIRED TO ACHIEVE COVERAGE OF PLANTED AREAS.

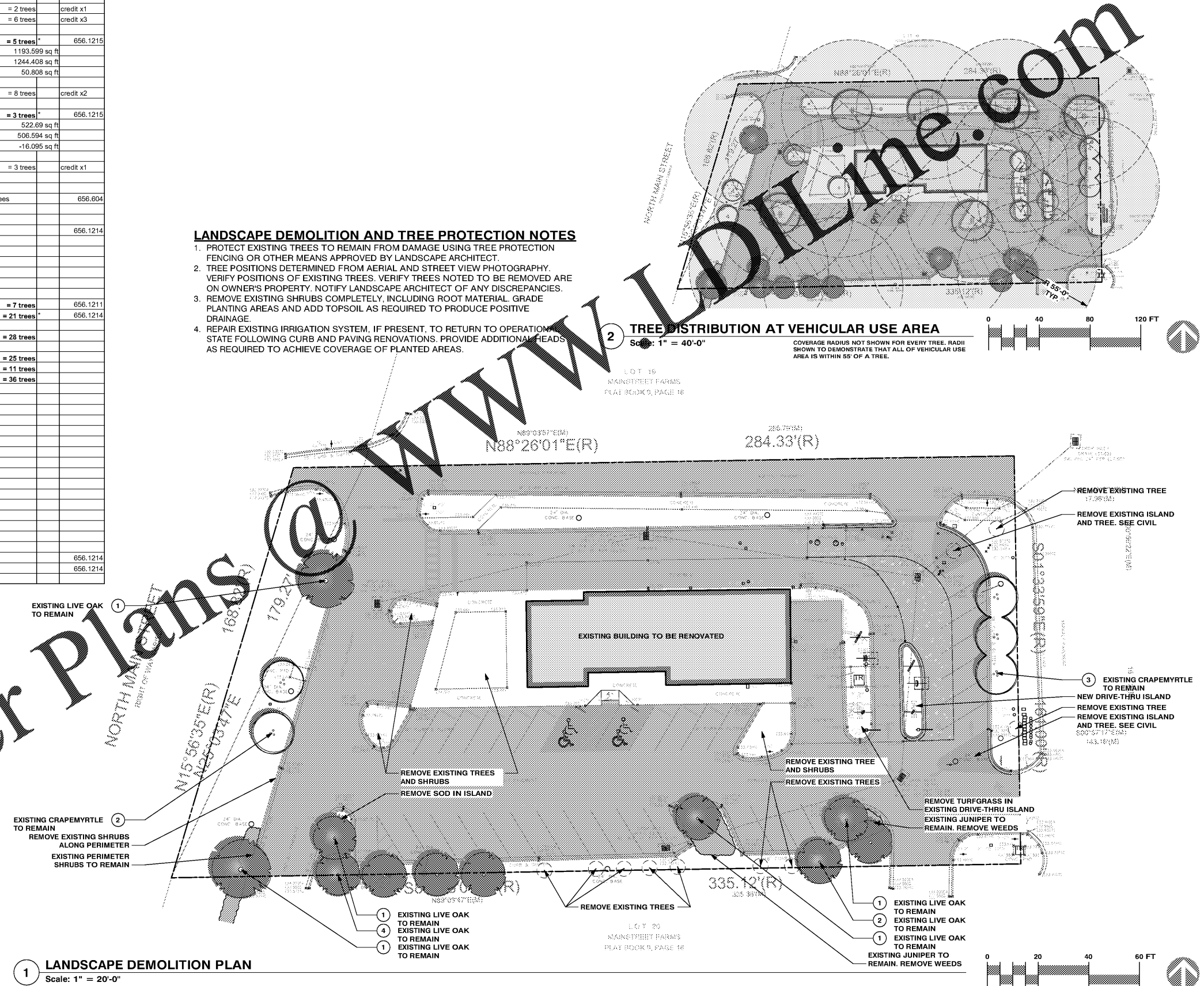
2 TREE DISTRIBUTION AT VEHICULAR USE AREA

Scale: 1" = 40'-0"

COVERAGE RADIUS NOT SHOWN FOR EVERY TREE. RADIUS SHOWN TO DEMONSTRATE THAT ALL OF VEHICULAR USE AREA IS WITHIN 55' OF A TREE.



Order Plans @



NO.	DATE	BY	REVISION

PREMIER KINGS, INC.
5297 CARRACREAR RD
JACKSONVILLE, FL 32217
PHONE: (321) 312-0889

2126 Morris Avenue
Birmingham, AL 35203
Phone: (205) 322-1251
Fax: (205) 322-1778
Email: info@huckestein.com
www.huckestein.com

huckestein architects, pc
architecture • planning • interior design

PROJECT #19202.03
IMAGE 2020 - DECEMBER 2016 STANDARDS

BURGER KING - RENOVATION
13049 MAIN STREET N
JACKSONVILLE, FL 32218

LANDSCAPE DEMOLITION PLAN

L1.0