

THE FOLLOWING INFORMATION HAS BEEN TAKEN FROM THE 2010 ADA STANDARDS FOR ACCESSIBLE DESIGN AND THE ICC 117.1-2009. PLEASE REFER TO THESE DOCUMENT FOR REMAINING SECTIONS.

**302 - FLOOR OR GROUND SURFACES**

**SECTION 302.2 - CARPET**

A. CARPET OR CARPET TILE SHALL BE SECURELY ATTACHED AND SHALL HAVE A FIRM CUSHION, PAD, OR BACKING OR NOT CUSHION OR PAD. CARPET OR CARPET TILE SHALL HAVE A LEVEL LOOP, ISOTURE LOOP, LEVEL CUT TILE OR LEVEL CUT/JUNCT PILE TEXTURE. PILE HEIGHT SHALL BE 1/2" MAXIMUM. EXPOSED JOISTS OF CARPET SHALL BE FASTENED TO FLOOR SURFACES AND SHALL HAVE TRIM ON THE ENTIRE LENGTH OF THE EXPOSED JOIST. CARPET EDGE TRIM SHALL COMPLY WITH 303.



FIGURE 302.2 CARPET PILE HEIGHT

**SECTION 302.3 - OPENINGS**

OPENINGS IN FLOOR OR GROUND SURFACES SHALL NOT ALLOW PASSAGE OF A SPHERE MORE THAN 1/2" DIAMETER EXCEPT AS ALLOWED IN 407.4.3, 409.4.3, 403.4.3, 403.5.3, 410.2.3. ELONGATED OPENINGS SHALL BE PLACED SO THAT THE LONG DIMENSION IS PERPENDICULAR TO THE DOMINANT DIRECTION OF TRAVEL.

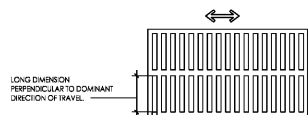


FIGURE 302.3 ELONGATED OPENINGS IN FLOOR OR GROUND SURFACES

**303 - CHANGES IN LEVEL**

**SECTION 303.2 - VERTICAL**

CHANGES IN LEVEL OF 1/4" HIGH MAXIMUM SHALL BE PERMITTED TO BE VERTICAL.

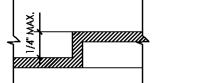


FIGURE 303.2 VERTICAL CHANGE IN LEVEL

**SECTION 303.3 - BEVELED**

CHANGES IN LEVEL BETWEEN 1/4" HIGH MINIMUM AND 1/2" HIGH MAXIMUM SHALL BE BEVELED WITH A SLOPE NOT STEEPER THAN 1:2. ADVISORY 303.3 BEVELED: A CHANGE IN LEVEL OF 1/2" IS PERMITTED TO BE 1/4" VERTICAL PLUS 1/4" BEVELED. HOWEVER, IN NO CASE MAY BE COMBINED CHANGE IN LEVEL EXCEED 1/2". CHANGES IN LEVEL EXCEEDING 1/2" MUST COMPLY WITH 405.3(RAMPS) OR 406 (CURB RAMPS).

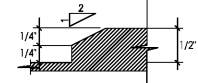
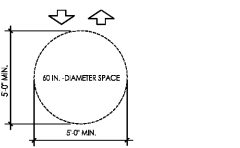


FIGURE 303.3 BEVELED CHANGE IN LEVEL

**304 - TURNING SPACE**

**SECTION 304.3.1 - CIRCULAR SPACE**

THE TURNING SPACE SHALL BE A SPACE OF 60" DIAMETER MINIMUM. THE SPACE SHALL BE PERMITTED TO INCLUDE KNEE AND TOE CLEARANCE COMPLYING WITH 306.



**SECTION 304.3.2 - T-SHAPED SPACE**

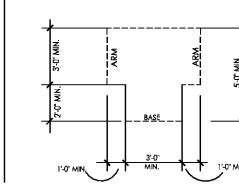
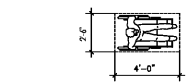


FIGURE 304.3.2 T-SHAPED TURNING SPACE

**305 - CLEAR FLOOR OR GROUND SPACE**

**SECTION 305.3 - SIZE**

THE CLEAR FLOOR OR GROUND SPACE SHALL BE 30" MINIMUM BY 48" MINIMUM.



CLEAR FLOOR SPACE

**SECTION 305.5 - POSITION**

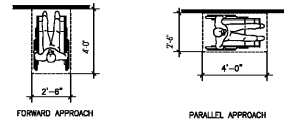
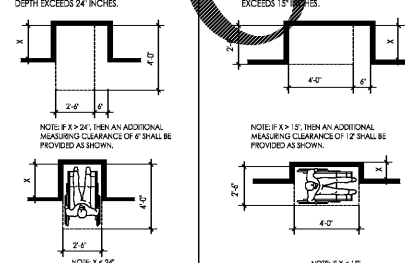


FIGURE 305.5 POSITION OF CLEAR FLOOR OR GROUND SPACE

**SECTION 305.7 - MANEUVERING CLEARANCE**

305.7.1 FORWARD APPROACH: ALL APPROACHES SHALL BE 36" WIDE MIN WHERE DEPTH EXCEEDS 24" INCHES.

305.7.2 PARALLEL APPROACH: APPROACHES SHALL BE 48" WIDE MIN WHERE DEPTH EXCEEDS 12" INCHES.



NOTE: IF X < 36", THEN AN ADDITIONAL MEASURING CLEARANCE OF 6" SHALL BE PROVIDED AS SHOWN.

NOTE: IF X < 36", THEN AN ADDITIONAL MEASURING CLEARANCE OF 6" SHALL BE PROVIDED AS SHOWN.

**306 - KNEE AND TOE CLEARANCE**

**SECTION 306.1 - GENERAL**

WHERE SPACE BENEATH AN ELEMENT IS INCLUDED AS PART OF CLEAR FLOOR OR GROUND SPACE OR TURNING SPACE, THE SPACE SHALL COMPLY WITH 306. ADDITIONAL SPACE SHALL NOT BE PROHIBITED BENEATH AN ELEMENT BUT SHALL NOT BE CONSIDERED AS PART OF THE CLEAR FLOOR OR GROUND SPACE OR TURNING SPACE.

ADVISORY 306.1 GENERAL: CLEARANCES ARE MEASURED IN RELATION TO THE USABLE CLEAR FLOOR SPACE. NOT NECESSARILY TO THE VERTICAL SUPPORT OF AN ELEMENT. WHEN DETERMINING CLEARANCE UNDER AN OBJECT FOR REQUIRED TURNING OR MANEUVERING SPACE, CARE SHOULD BE TAKEN TO ENSURE THE SPACE IS CLEAR OF ANY OBSTRUCTIONS.

**SECTION 306.2 - TOE CLEARANCE**

SPACE UNDER AN ELEMENT BETWEEN THE FINISH FLOOR OR GROUND AND 9 INCHES ABOVE THE FINISH FLOOR OR GROUND SHALL BE CONSIDERED TOE CLEARANCE AND SHALL COMPLY WITH 306.2.

**SECTION 306.2.2 - MAXIMUM DEPTH**

TOE CLEARANCE SHALL EXTEND 25 INCHES MAXIMUM UNDER AN ELEMENT.

**SECTION 306.2.3 - MINIMUM REQUIRED DEPTH**

WHERE TOE CLEARANCE IS REQUIRED AS PART OF A CLEAR FLOOR SPACE, THE TOE CLEARANCE SHALL EXCEED 17 INCHES MINIMUM UNDER THE ELEMENT.

**SECTION 306.2.4 - ADDITIONAL CLEARANCE**

SPACE EXTENDING GREATER THAN 8 INCHES BEYOND THE AVAILABLE KNEE CLEARANCE AT 9 INCHES ABOVE THE FINISH FLOOR OR GROUND SHALL NOT BE CONSIDERED TOE CLEARANCE.

**SECTION 306.2.5 - WIDTH**

TOE CLEARANCE SHALL BE 30 INCHES WIDE MINIMUM.

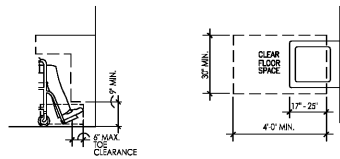


FIGURE 306.2 TOE CLEARANCE

**SECTION 306.3 - KNEE CLEARANCE**

**SECTION 306.3.1 - GENERAL**

SPACE UNDER AN ELEMENT BETWEEN 9 INCHES AND 27 INCHES ABOVE THE FINISH FLOOR OR GROUND SHALL BE CONSIDERED KNEE CLEARANCE AND SHALL COMPLY WITH 306.3.

**SECTION 306.3.2 - MAXIMUM DEPTH**

KNEE CLEARANCE SHALL EXTEND 25 INCHES MAXIMUM UNDER AN ELEMENT AT 9 INCHES ABOVE THE FINISH FLOOR OR GROUND.

**SECTION 306.3.3 - MINIMUM REQUIRED DEPTH**

WHERE KNEE CLEARANCE IS REQUIRED UNDER AN ELEMENT AS PART OF A CLEAR FLOOR SPACE, THE KNEE CLEARANCE SHALL BE 11 INCHES DEEP MINIMUM AT 9 INCHES ABOVE THE FINISH FLOOR OR GROUND, AND 9 INCHES DEEP MINIMUM AT 27 INCHES ABOVE THE FINISH FLOOR OR GROUND.

**SECTION 306.3.4 - CLEARANCE REDUCTION**

BETWEEN 9 INCHES AND 27 INCHES ABOVE THE FINISH FLOOR OR GROUND, THE KNEE CLEARANCE SHALL BE PERMITTED TO REDUCE AT A RATE OF 1 INCH IN DEPTH FOR 6 INCHES IN HEIGHT.

**SECTION 306.3.5 - WIDTH**

KNEE CLEARANCE SHALL BE 30 INCHES WIDE MINIMUM.

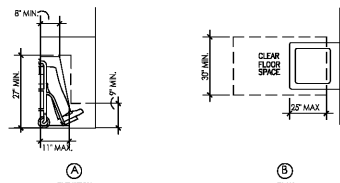


FIGURE 306.3 KNEE CLEARANCE

**307 - PROTRUDING OBJECTS**

**SECTION 307.2 - PROTRUSION LIMITS**

OBJECTS WITH LEADING EDGES BETWEEN 27" AND NOT MORE THAN 48" ABOVE THE FINISH FLOOR OR GROUND SHALL PROTRUDE A MAXIMUM HORIZONTALLY INTO THE CIRCULATION PATH. EXCEPTION: HANDRAILS SHALL BE PERMITTED TO PROTRUDE UP TO 17" MAXIMUM.

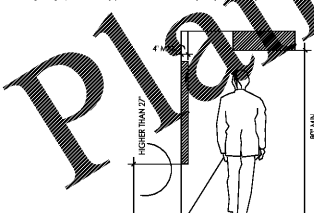


FIGURE 307.2 LIMITS OF PROTRUDING OBJECTS

**SECTION 307.3 - POST-MOUNTED OBJECTS**

FREE-STANDING OBJECTS MOUNTED ON POSTS OR PIPES SHALL OVERHANG CIRCULATION PATHS 12" MAX. WHEN LOCATED 27" MIN. AND 80" MAX. ABOVE THE FINISH FLOOR OR GROUND. WHERE A SIGN OR OTHER OBSTRUCTION IS MOUNTED BETWEEN POSTS OR PIPES AND THE CLEAR DISTANCE BETWEEN THE POSTS OR PIPES IS GREATER THAN 12", THE LOWEST EDGE OF SUCH SIGN OR OBSTRUCTION SHALL BE 27" MAX. OR 80" MAX. ABOVE THE FINISH FLOOR OR GROUND.

EXCEPTION: THE SLOPING PORTIONS OF HANDRAILS SERVING STAIRS AND RAMPS SHALL NOT BE REQUIRED TO COMPLY WITH 307.3.

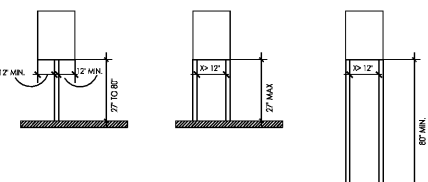


FIGURE 307.3 POST-MOUNTED PROTRUDING OBJECTS

**307 - PROTRUDING OBJECTS, CONTINUED**

**SECTION 307.4 - VERTICAL CLEARANCE**

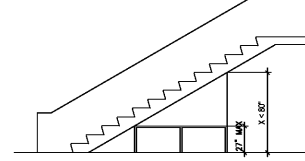


FIGURE 307.4 VERTICAL CLEARANCE

**308 - REACH RANGES**

**SECTION 308.1 - GENERAL**

REACH RANGES SHALL COMPLY WITH 308. ADVISORY 308.1 GENERAL: THE FOLLOWING TABLE PROVIDES GUIDANCE ON REACH RANGES FOR CHILDREN ACCORDING TO AGE WHERE BUILDING ELEMENTS SUCH AS COUNTERTOPS, LOCKERS, OR OPERABLE PARTS ARE DESIGNED FOR USE PRIMARILY BY CHILDREN. THESE DIMENSIONS APPLY TO EITHER FORWARD OR SIDE REACHS. ACCESSIBLE ELEMENTS AND OPERABLE PARTS DESIGNED FOR ADULT USE OR CHILDREN OVER AGE 12 CAN BE LOCATED OUTSIDE THESE RANGES BUT MUST BE WITHIN THE ADULT REACH RANGES REQUIRED BY 308.

CHILDREN'S REACH RANGES			
	AGES 3 AND 4	AGES 5 THR. 8	AGES 9 THR. 12
FORWARD OR SIDE REACH			
HIGH (MAX)	36 in	40 in	44 in
LOW (MAX)	20 in	18 in	16 in

**SECTION 308.2 - FORWARD REACH**

SECTION 308.2.1 - UNOBSTRUCTED

WHERE A FORWARD REACH IS UNOBSTRUCTED, THE HIGH FORWARD REACH SHALL BE 48" MAX. AND THE LOW REACH SHALL BE 15" MIN ABOVE THE FINISH FLOOR OR GROUND.

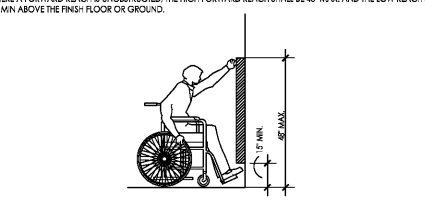


FIGURE 308.2.1 UNOBSTRUCTED FORWARD REACH

**SECTION 308.2.2 - OBSTRUCTED HIGH REACH**

WHERE A FORWARD REACH IS OVER AN OBSTRUCTION, THE CLEAR FLOOR SPACE SHALL EXTEND BENEATH THE OBSTRUCTION TO A DISTANCE NOT LESS THAN THE REQUIRED REACH DEPTH OVER THE OBSTRUCTION. THE HIGH FORWARD REACH SHALL BE 48" MAX. WHERE THE REACH DEPTH IS 30" MAX. WHERE THE REACH DEPTH EXCEEDS 30" THE HIGH FORWARD REACH SHALL BE 48" MAX. AND THE REACH DEPTH SHALL BE 24" MAX.

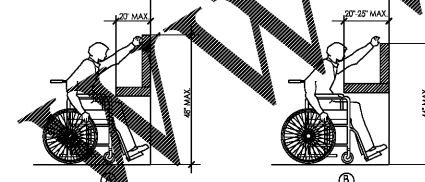


FIGURE 308.2.2 UNOBSTRUCTED HIGH FORWARD REACH

**SECTION 308.3 - SIDE REACH**

**SECTION 308.3.1 - UNOBSTRUCTED**

WHERE A CLEAR FLOOR OR GROUND SPACE ALLOWS A PARALLEL APPROACH TO AN ELEMENT AND THE SIDE REACH IS UNOBSTRUCTED, THE HIGH SIDE REACH SHALL BE 48" MAX. AND THE LOW SIDE REACH SHALL BE 15" MIN. ABOVE THE FINISH FLOOR OR GROUND.

EXCEPTION: 1. AN OBSTRUCTION SHALL BE PERMITTED BETWEEN THE CLEAR FLOOR OR GROUND SPACE AND THE ELEMENT WHERE THE DEPTH OF THE OBSTRUCTION IS 10" MAX. 2. OPERABLE PARTS OF FUEL DISPENSERS SHALL BE PERMITTED TO BE 54" MAX. MEASURED FROM THE SURFACE OF THE VEHICULAR WAY WHERE FUEL DISPENSERS ARE INSTALLED ON EXISTING CURBS.

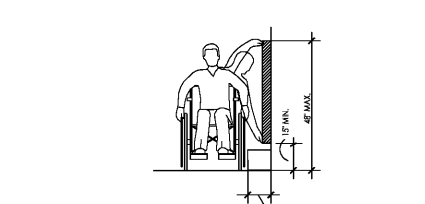


FIGURE 308.3.1 UNOBSTRUCTED SIDE REACH

**SECTION 308.3.2 - OBSTRUCTED HIGH REACH**

WHERE A CLEAR FLOOR OR GROUND SPACE ALLOWS A PARALLEL APPROACH TO AN ELEMENT AND THE HIGH SIDE REACH IS OVER AN OBSTRUCTION, THE HEIGHT OF THE OBSTRUCTION SHALL BE 34" MAX. AND THE DEPTH OF THE OBSTRUCTION SHALL BE 24" MAX. THE HIGH SIDE REACH SHALL BE 48" MAX. FOR A REACH DEPTH OF 10" MAX. WHERE THE REACH DEPTH EXCEEDS 10", THE HIGH SIDE REACH SHALL BE 48" MAX. FOR A REACH DEPTH OF 24" MAX.

EXCEPTIONS: 1. THE TOP OF FUELING MACHINES AND CLOTHES DRYERS SHALL BE PERMITTED TO BE 58" MAXIMUM ABOVE THE FINISH FLOOR. 2. OPERABLE PARTS OF FUEL DISPENSERS SHALL BE PERMITTED TO BE 54" MAX. MEASURED FROM THE SURFACE OF THE VEHICULAR WAY WHERE FUEL DISPENSERS ARE INSTALLED ON EXISTING CURBS.

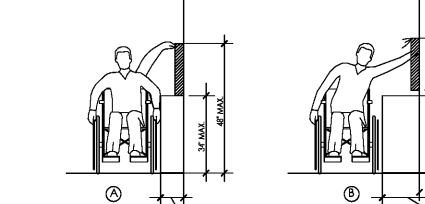


FIGURE 308.3.2 OBSTRUCTED HIGH SIDE REACH

**309 - OPERABLE PARTS**

**SECTION 309.2 - CLEAR FLOOR SPACE**

A CLEAR FLOOR OR GROUND SPACE COMPLYING WITH 305 SHALL BE PROVIDED.

**SECTION 309.4 - OPERATION**

OPERABLE PARTS SHALL BE OPERABLE WITH ONE HAND AND SHALL NOT REQUIRE TIGHT GRASPING, MACHING, OR TWISTING OF THE WRIST. THE FORCE REQUIRED TO ACTIVATE OPERABLE PARTS SHALL BE 5 POUNDS MAX.

**402-403 - ACCESSIBLE ROUTES**

**SECTION 402.2 - COMPONENTS**

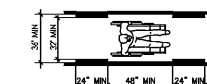
ACCESSIBLE ROUTES SHALL CONSIST OF ONE OR MORE OF THE FOLLOWING COMPONENTS: WALKING SURFACES WITH A RUNNING SLOPE NOT STEEPER THAN 1:20; DOORWAYS, RAMPS, CURB RAMPS INCLUDING THE FLARED SIDES, ELEVATORS, AND PLATFORM LIFTS. ALL COMPONENTS OF AN ACCESSIBLE ROUTE SHALL COMPLY WITH THE APPLICABLE REQUIREMENTS OF CHAPTER 4.

**SECTION 403.3 - SLOPE**

THE RUNNING SLOPE OF WALKING SURFACES SHALL NOT BE STEEPER THAN 1:20. THE CROSS SLOPE OF WALKING SURFACES SHALL NOT BE STEEPER THAN 1:48.

**SECTION 403.5.1 - CLEAR WIDTH**

EXCEPT AS PROVIDED IN 403.5.2 AND 403.5.3, THE CLEAR WIDTH OF WALKING SURFACES SHALL BE 36" MINIMUM. EXCEPTION: THE CLEAR WIDTH SHALL BE PERMITTED TO BE REDUCED TO 32" MIN. FOR A LENGTH OF 24" MAX. PROVIDED THAT THAT REDUCED WIDTH SEGMENTS ARE SEPARATED BY SEGMENTS THAT ARE 48" LONG MIN. AND 36" WIDE MIN.



**SECTION 403.5.3 - PASSING SPACES**

AN ACCESSIBLE ROUTE WITH A CLEAR WIDTH LESS THAN 60" SHALL PROVIDE PASSING SPACES AT INTERVALS OF 30 FEET. PASSING SPACES SHALL BE EITHER A SPACE 60" MIN. BY 80" MIN. OR AN INTERSECTION OF TWO WALKING SURFACES PROVIDING A T-SHAPED SPACE COMPLYING WITH 304.3.2 WHERE THE BASE AND ARMS OF THE T-SHAPE SHALL BE EXTENDED 12" MIN. BEYOND THE INTERSECTION.

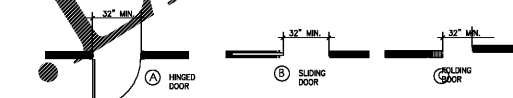
**404 - DOORS, DOORWAYS AND GATES**

**SECTION 404.2.2 - DOUBLE LEAF DOORS AND GATES**

AT LEAST ONE OF THE ACTIVE LEAVES OF DOORWAYS AND GATES SHALL COMPLY WITH 404.2.3 AND 404.2.4.

**SECTION 404.2.3 - CLEAR WIDTH**

DOOR OPENINGS SHALL PROVIDE A CLEAR WIDTH OF 32" MIN. THE OPENINGS OF DOORWAYS WITH SWINGING DOORS SHALL BE MEASURED FROM THE FACE OF THE DOOR AND THE WIDTH WITH THE DOOR OPEN 90 DEGREES. OPENINGS MORE THAN 24" DEEP SHALL HAVE A CLEAR OPENING OF 38" MIN. THERE SHALL BE NO PROJECTIONS INTO THE REQUIRED CLEAR OPENING WIDTH LESS THAN 34" AND 80" ABOVE THE FINISH FLOOR OR GROUND SHALL NOT EXCEED 4". EXCEPTIONS: 1. ALL PROJECTIONS SHALL BE PERMITTED TO EXCEED 4" FROM THE CLEAR WIDTH MEASUREMENT FOR 2. DOOR CLOSERS AND STOPS SHALL BE PERMITTED TO BE 78" MIN. ABOVE FINISH FLOOR OR GROUND.

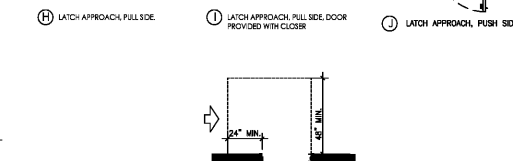
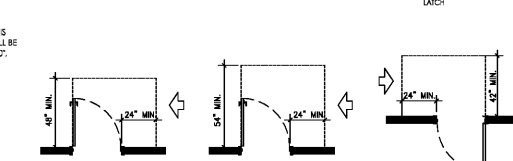
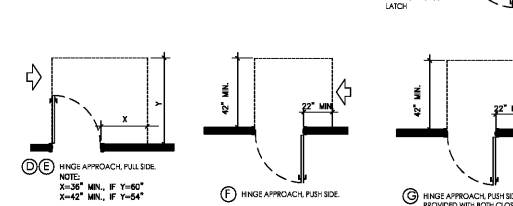
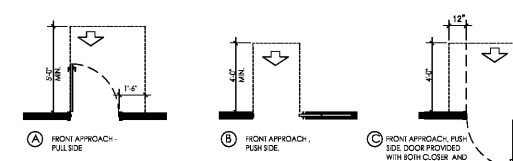


**SECTION 404.2.4 - MANEUVERING CLEARANCES**

MINIMUM MANEUVERING CLEARANCES AT DOORS AND GATES SHALL COMPLY WITH 404.2.4. MANEUVERING CLEARANCES SHALL EXTEND THE FULL WIDTH OF THE DOORWAY AND THE REQUIRED LATCH SIDE OR HINGE SIDE CLEARANCE. EXCEPTION: ENTRY DOORS TO HOSPITAL PATIENT ROOMS SHALL NOT BE REQUIRED TO PROVIDE THE CLEARANCE BEYOND THE LATCH SIDE OF THE DOOR.

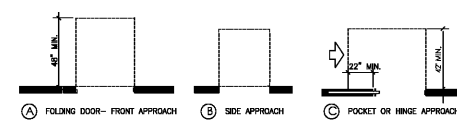
**SECTION 404.2.4.1 - MANEUVERING CLEARANCE**

APPROACH DIRECTION	DOOR SIDE	PERPENDICULAR TO DOORWAY	PARALLEL TO DOORWAY
FROM FRONT	PULL	60"	18"
FROM FRONT	PUSH	48"	0"
FROM HINGE SIDE	PULL	60"	36"
FROM HINGE SIDE	PUSH	54"	42"
FROM LATCH SIDE	PULL	48"	24"
FROM LATCH SIDE	PUSH	42"	24"



**404 - DOORS, DOORWAYS AND GATES, CONTINUED**

**SECTION 404.2.4.2 - DOORWAYS WITHOUT DOORS OR GATES, AND FOLDING DOORS**

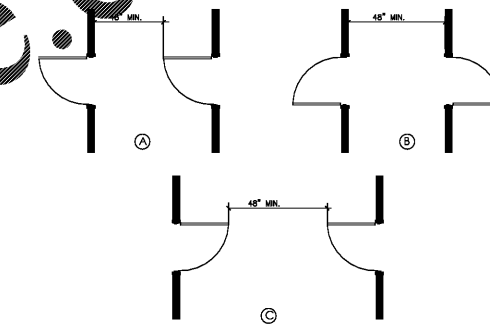


**SECTION 404.2.5 - THRESHOLDS**

THRESHOLDS, IF PROVIDED AT DOORWAYS, SHALL BE 1/2" HIGH MAX. RAISED THRESHOLDS AND CHANGES IN LEVEL AT DOORWAYS SHALL COMPLY WITH 302.2 AND 303.

**SECTION 404.2.6 - DOOR SERIES AND GATES IN SERIES**

THE DISTANCE BETWEEN TWO UNOBSTRUCTED DOORS IN SERIES AND GATES SHALL BE 48" MINIMUM PLUS THE WIDTH OF THE DOORS OR GATES SWINGING INTO THE SPACE.



**SECTION 404.2.7 - DOOR AND GATE HARDWARE**

HANDLES, PULLS, LATCHES, LOCKS, AND OTHER OPERATING PARTS ON DOORS AND GATES SHALL COMPLY WITH 309.4. OPERABLE PARTS OF SUCH HARDWARE SHALL BE 34" MIN. AND 48" MAX. ABOVE THE FINISH FLOOR OR GROUND. WHERE SLIDING DOORS ARE IN THE FULLY OPEN POSITION, OPERATING HARDWARE SHALL BE EXPOSED AND USABLE FROM BOTH SIDES.

**SECTION 404.2.8.1 - DOOR AND GATE CLOSERS**

DOOR CLOSERS AND GATE CLOSERS SHALL BE ADJUSTED SO THAT FROM AN OPEN POSITION OF 90 DEGREES, THE TIME REQUIRED TO MOVE THE DOOR TO A POSITION OF 12 DEGREES FROM THE LATCH IS 5 SECONDS MINIMUM.

**SECTION 404.2.9 - DOOR OPENING FORCE**

FIRE DOORS SHALL HAVE A MINIMUM OPENING FORCE ALLOWABLE BY THE APPROPRIATE ADMINISTRATIVE AUTHORITY. THE FORCE FOR PUSHING OR PULLING OPEN A DOOR OR GATE OTHER THAN FIRE DOORS SHALL BE AS FOLLOWS:

- INTERIOR HINGED DOORS AND GATES: 5 POUNDS MAX.
- SLIDING OR FOLDING DOORS: 5 POUNDS MAX.

THESE FORCES DO NOT APPLY TO THE FORCE REQUIRED TO RETRACT LATCH BOLTS OR DISENGAGE OTHER DEVICES THAT HOLD THE DOOR IN A CLOSED POSITION.

**SECTION 404.2.11 - VISION LIGHTS**

DOORS, GATES, AND SLIDING JOISTS ADJACENT TO DOORS OR GATES, CONTAINING ONE OR MORE GLAZING PANELS THAT PERMIT VIEWING THROUGH THE PANELS SHALL HAVE THE BOTTOM OF AT LEAST ONE GLAZED PANEL LOCATED 43" MAXIMUM ABOVE THE FINISH FLOOR.

**405- RAMPS**

**SECTION 405.1 - GENERAL**

GENERAL RAMPS ON ACCESSIBLE ROUTES SHALL COMPLY WITH 405

**SECTION 405.2 SLOPE**

RAMPS RUNS SHALL HAVE A RUNNING SLOPE NOT STEEPER THAN 1:12. EXCEPTION: IN EXISTING BUILDINGS AND FACILITIES, RAMPS SHALL BE PERMITTED TO HAVE RUNNING SLOPES STEEPER THAN 1:12 COMPLYING WITH TABLE 405.2 WHERE SUCH SLOPES ARE NECESSARY DUE TO SPACE LIMITATIONS.

**SECTION 405.3 - CROSS SLOPE**

CROSS SLOPE RAMP RUNS SHALL NOT BE STEEPER THAN 1:48

**SECTION 405.4 - FLOOR OR GROUND SURFACES**

FLOOR OR GROUND SURFACES OF RAMP RUNS SHALL COMPLY WITH 302. CHANGES IN LEVEL OTHER THAN THE RUNNING SLOPE AND CROSS SLOPE ARE NOT PERMITTED ON RAMP RUNS.

**SECTION 405.5 - CLEAR WIDTH**

THE CLEAR WIDTH OF A RAMP RUN AND, WHERE HANDRAILS ARE PROVIDED, THE CLEAR WIDTH BETWEEN HANDRAILS SHALL BE 36" MIN.

**SECTION 405.6 - RISE**

THE RISE FOR ANY RAMP RUN SHALL BE 30" MAX.

**SECTION 405.7 - LANDINGS**

RAMPS SHALL HAVE LANDINGS AT THE TOP AND THE BOTTOM OF EACH RAMP RUN. LANDINGS SHALL COMPLY WITH 405.7

**SECTION 405.7.1 - SLOPE**

LANDINGS SHALL COMPLY WITH 302. CHANGES IN LEVEL ARE NOT PERMITTED.

**SECTION 405.7.2 - WIDTH**

THE LANDING CLEAR WIDTH SHALL BE AT LEAST AS WIDE AS THE WIDEST RAMP RUN LEADING TO THE LANDING

**SECTION 405.7.3 - LENGTH**