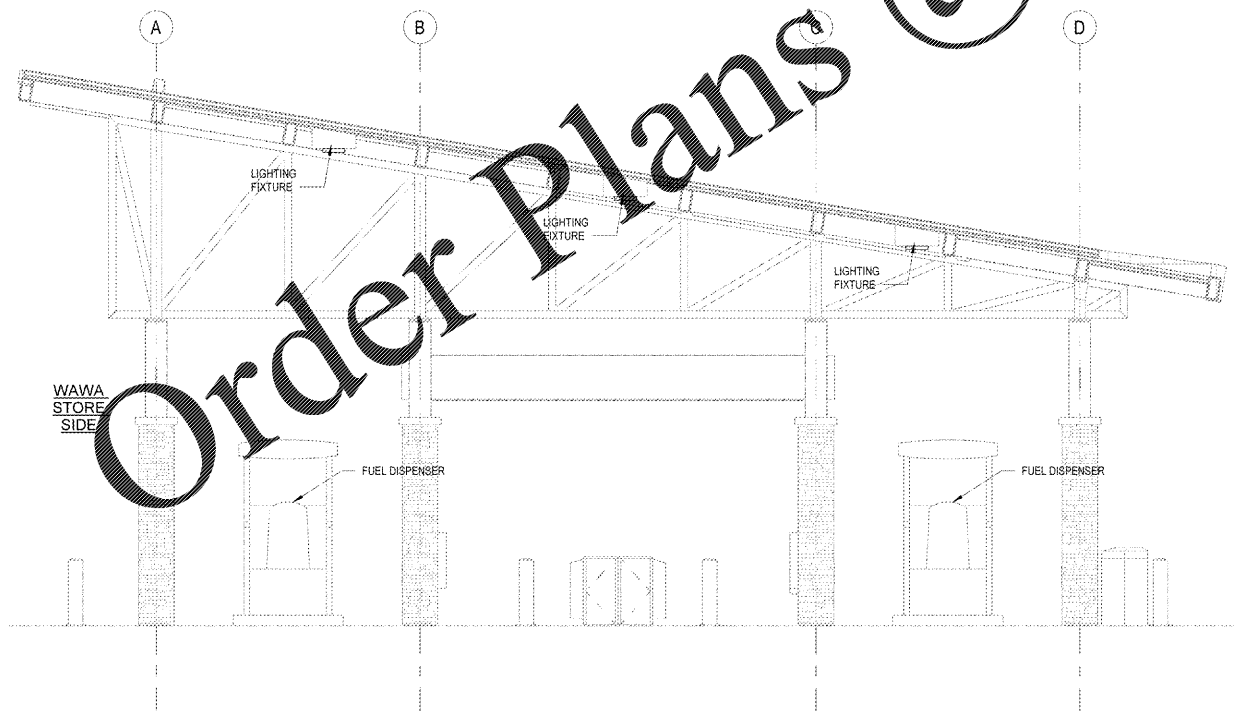


1 CANOPY ELECTRICAL REFLECTED CEILING PLAN  
1/8" = 1'-0"

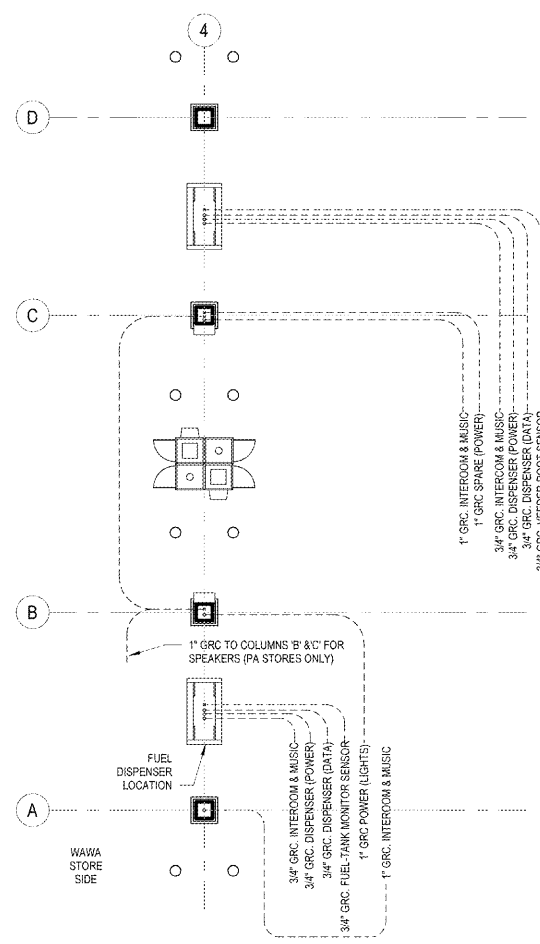
Lighting Fixture Schedule

TYPE	MANUF	CATALOG NO.	QUANT.	WATTS / LAMP	LAMPS / FIXTURE	MGT.
LED	RECY MOUNT	SLIDER ADAPTED	24	114 W	1	SURFACE

ALL LIGHT FIXTURES AND LAMPS SUPPLIED BY WAWA, INSTALLED BY G.C.  
COORDINATE FIXTURE COUNT, LOCATIONS AND LAMP OUTPUT WITH SITE LIGHTING ENGINEERING DRAWINGS



2 CANOPY SIDE ELEVATION  
1/4" = 1'-0"



4 CANOPY FLOOR PLAN - ELEC - Callout 1  
3/16" = 1'-0"

**ELECTRICAL NOTES**

- ALL FIXTURES AND COMPONENTS SHALL BE GROUNDED BY A SEPARATE #10 GROUND WIRE.
- PETROLEUM CONTRACTOR TO PULL WIRING FOR INTERCOM AT CANOPY (SUPPLIED BY OTHERS).
- THE CONDUIT FOR THE "FD" FIXTURES TO RUN ALONG THE GUTTER PAN AND RUN TO THE FIXTURES IN THE FLUTES OF THE DECKING. NO CONDUIT SHOULD BE VISIBLE FROM BELOW THE CANOPY.
- FOR DISPENSER DATA, FUEL-TANK MONITOR AND INTERCOMMUSIC PROVIDE CONDUCTORS AND CONNECTIONS AS REQUIRED. COORDINATE WITH WAWA CONSTRUCTION MANAGER.
- USE THIS CIRCUIT TO PROVIDE POWER TO 300 VOLT ILLUMINATED SIGN AT THIS LOCATION BETWEEN CANOPY COLUMNS AT APPROXIMATELY 12' AFG.
- ELECTRICAL CONTRACTOR TO COORDINATE WITH PETROLEUM CONTRACTOR AND GENERAL CONTRACTOR TO MAKE SURE THAT SEAL OFF FITTINGS AS REQUIRED ARE PROVIDED FOR CONDUITS ENTERING THE FUEL DISPENSERS AND THAT THE ELECTRICAL INSTALLATION AT THE GAS CANOPY AND FUEL TANKS IS IN ACCORDANCE WITH NEC ARTICLE 514.
- FOR BRANCH CIRCUITS OUT TO CANOPY AREA, IF CIRCUIT LENGTH EXCEEDS 100 FEET WIRE/CONDUIT MUST BE UPSIZED PER CODE TO PREVENT EXCESSIVE VOLTAGE DROP.
- LIGHT FIXTURES PROVIDED BY WAWA AND INSTALLED BY CANOPY VENDOR. E.C. RESPONSIBLE FOR CONDUIT, WIRING AND FINAL CONNECTION.
- WAWA GOOSE SIGN, E.C. TO VERIFY EXACT LOCATION WITH G.C. AND ARCHITECTURAL DRAWINGS, E.C. TO RUN WIRING, CONDUIT AND CONNECT TO LOCAL CIRCUITRY.

**TANKS AND CANOPY CONDUIT AND CONDUCTOR NOTES:**

THE GENERAL CONTRACTOR SHALL FURNISH AND INSTALL ALL GRC CONDUIT, ASSOCIATED FITTINGS AND WIRE NECESSARY TO PROVIDE A COMPLETE ELECTRICAL SYSTEM FOR THE GAS CANOPY, FUEL TANKS, MUSIC AND INTERCOM SYSTEM.

HOWEVER, THE FOLLOWING CONDUIT SHALL BE PROVIDED AND INSTALLED BY THE CONTRACTOR INDICATED BELOW.

**FUEL TANKS:**  
PETROLEUM CONTRACTOR SHALL FURNISH AND INSTALL THE CONDUIT FROM THE EDGE OF THE FUEL TANK CONCRETE PAD AND TERMINATE AT THE TANK EQUIPMENT.

**GAS CANOPY:**  
PETROLEUM CONTRACTOR SHALL FURNISH AND INSTALL THE CONDUIT FROM THE EDGE OF THE CONCRETE CANOPY PAD TO THE BASE OF THE CANOPY COLUMNS WHERE THEY WILL MAKE A THREADED CONNECTION. (REFER TO DETAIL 4(ICE1) CANOPY FABRICATOR. SHALL FURNISH AND INSTALL THE THREADED CONNECTOR (MN 5 EXPOSED THREADS) AT THE BASE OF THE CANOPY COLUMN AND CONTINUE UP THROUGH THE COLUMN TO A SEAL OFF AND J-BOX AT 2'-4" THEN CONTINUE WITH RIGID CONDUIT TO THE BOTTOM OF THE CANOPY WHERE IT WILL TRANSITION INTO SEALTIGHT CONDUIT AND TERMINATE AT THE FIRST ROW OF LIGHTS. GO SHALL CONNECT INTO THE FIRST ROW OF LIGHTS AND COMPLETE THE ELECTRICAL CANOPY LIGHTING.

PETROLEUM CONTRACTOR SHALL ALSO INSTALL THE CONDUIT FROM THE EDGE OF THE CONCRETE CANOPY PAD TO THE TERMINATION POINT FOR THE MUSIC AND INTERCOM SYSTEMS.

**GASOLINE CONDUIT REQUIREMENTS:**

- (1) 1" GRC TO CANOPY COLUMN FOR INTERCOMMUSIC.
- (1) 1" GRC TO CANOPY COLUMN FOR LIGHTING.
- (3) 1" GRC TO EACH DISPENSER. (1) POWER, 1) DATA, 1) MUSIC.
- (1) 3/4" GRC TO EACH DISPENSER. (FUEL TANK MONITOR SENSOR).
- (2) 1" GRC TO EACH TANK CONTAINMENT UNIT. (F.E. PETRO POWER (1) POWER, 1) SPARE).
- (1) 3/4" GRC TO EACH TANK CONTAINMENT UNIT. (FUEL TANK MONITOR MAGNETOSTRICTIVE PROBE).
- (1) 3/4" GRC TO EACH TANK CONTAINMENT UNIT. (FUEL TANK MONITOR SENSOR).
- (1) 3/4" GRC TO EACH TANK CONTAINMENT UNIT. (FUEL TANK MONITOR MULTI-PORT FILL SUMP).
- (1) 3/4" GRC TO EACH TANK CONTAINMENT UNIT. (FUEL TANK MONITOR BRINE INTERSTITIAL RESERVOIR).
- (1) 1" GRC TO OVERFILL ALARM. (ON VENT STACK).
- (1) 1" GRC TO VENT STACK (SPARE).
- (1) 1" GRC TO CANOPY COLUMN FOR SPEAKER (PA STORE ONLY).
- (1) 1" GRC TO CANOPY COLUMN FOR SPARE.

Order Plans @

WWW.LDILLING.COM

1925 Prospect Ave.  
Orlando, FL 32814  
P (407) 661-9100  
F (407) 661-9101  
[www.c.p.com](http://www.c.p.com)

**Chulaci & Peterson**  
Architects Engineers Planners

---

CLIENT NAME: **WAWA**  
260 W. BALTIMORE PIKE  
WAWA, PA 19063

PROJECT NAME: **STACKED 8 GAS CAN. 2018.01-MA**  
STORE #8668-SUD  
10891 DAVIDSON PLACE  
MANASSAS, VA 20109

REVISION SCHEDULE

No.	Description	Date
1	PERMIT SET	01/04/2019
1	PERMIT COMMENTS	03/15/2019
	BID SET	09/27/2019

PROJECT NO. 2170584  
DATE 01/04/2019  
DRAWN M.L.B.  
CHECKED J.P.M.

**CE1**

ELECTRICAL CANOPY PLANS, DETAILS, SCHEDULES