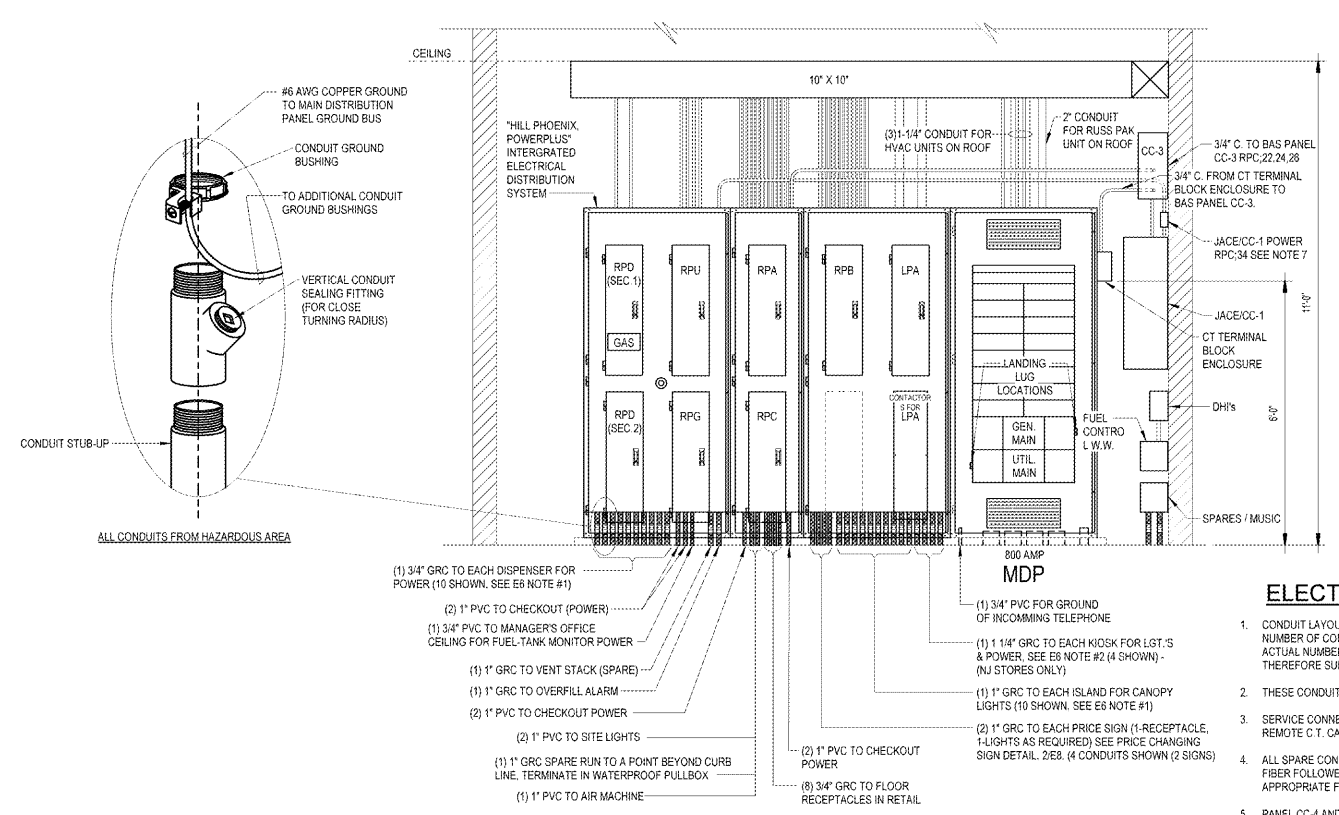


Revision Schedule	No.	Description	Date
PERMIT SET	1	PERMIT COMMENTS	01/04/2019
BID SET	1	BID SET	03/15/2019
			06/27/2019

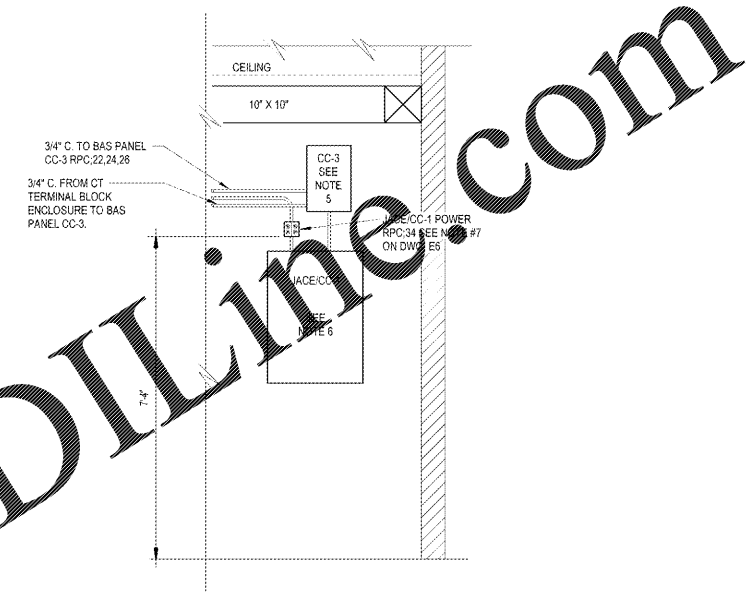
PROJECT NO.	2170584
DATE	01/04/2019
DRAWN	M.B.
CHECKED	JPM



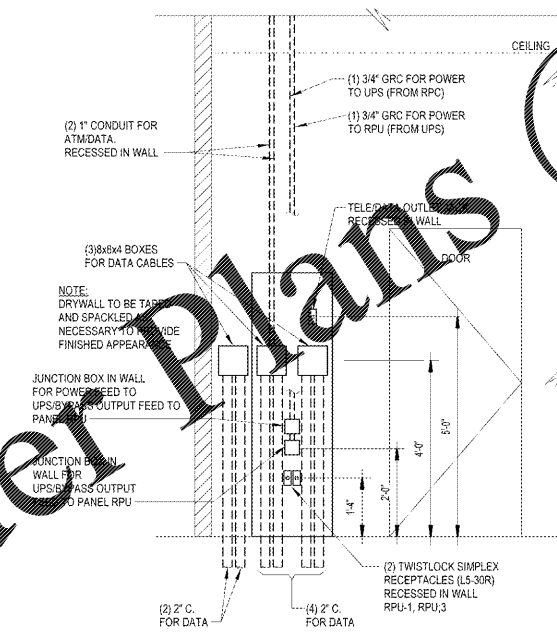
1 ELECTRICAL ROOM ELEVATION
E7 1/2" = 1'-0"

ELECTRICAL ROOM ELEVATION NOTES:

- CONDUIT LAYOUT PLAN SHOWN ON PLAN HAS PROVISIONS FOR 10 DISPENSERS. THE ACTUAL NUMBER OF CONDUITS REQUIRED WILL BE DEPENDENT ON THE CANOPY CONFIGURATION AND ACTUAL NUMBER OF DISPENSERS INSTALLED. IF FEWER DISPENSERS ARE INSTALLED, AND THEREFORE SUFFICIENT SPACE EXISTS, THE CONDUITS ARE TO BE INSTALLED IN A SINGLE ROW.
- THESE CONDUITS REQUIRE ONLY AT STORES WITH KIOSK (TYPICALLY NJ STORES ONLY).
- SERVICE CONNECT AND METER CABINET ARE SHOWN FOR ILLUSTRATIVE PURPOSES ONLY. REMOVE C.T. CABINET AS INDICATED ON SINGLE LINE DIAGRAM IS PREFERRED INSTALLATION.
- ALL SPARE CONDUITS WHICH TRAVERSE THE HAZARDOUS AREA SHOULD BE PACKED WITH MINERAL FIBER FOLLOWED WITH DUCT SEAL, AND THEN SEALED WITH A THREADED PLUG OR CAP APPROPRIATE FOR THE SPECIFIC CONFIGURATION AT EACH END OF THE CONDUIT.
- PANEL CC-4 AND REQUIRED CONDUITS WILL BE PROVIDED BY THE CONTRACTOR.
- PANEL JACE AND REQUIRED CONDUIT SHALL BE PROVIDED BY THE CONTRACTOR.
- JUNCTION BOX, RECEPTACLES AND ASSOCIATED CONDUIT TO HILL PHOENIX PANEL SHALL BE PROVIDED BY ELECTRICAL CONTRACTOR. JUNCTION BOX SHALL BE SURFACE MOUNTED.
- PROVIDE LABEL ON ALL RPS AND RPS STATING "GASOLINE EQUIPMENT ONLY. DO NOT INSTALL ANY ADDITIONAL CIRCUITS".
- PROVIDE A LABEL ON PANEL RPU STATING "IT EQUIPMENT ONLY. DO NOT INSTALL ANY ADDITIONAL CIRCUITS".

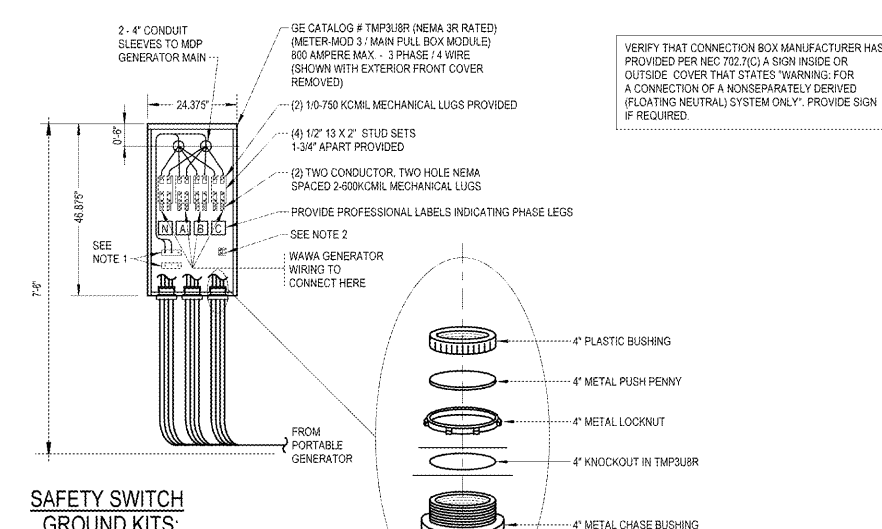


2 ELECTRICAL ROOM BAS PANEL ELEVATION
E7 1/2" = 1'-0"



NOTE:
THE CONDUITS THAT RUN OUTSIDE BUILDING TO SITE AND DO NOT TRAVERSE HAZARDOUS AREAS COORDINATE WITH NOTE 1E6 MAYBE PVC IF PERMITTED BY GOVERNING MUNICIPALITY. ALL CONDUITS THAT RUN TO CANOPY AND TANK FIELD TO BE GRC. (PVC NOT PERMITTED BY WAWA)

3 ELECTRICAL ROOM COMPUTER SERVER ELEVATION
E7 1/2" = 1'-0"



SAFETY SWITCH GROUND KITS:

- (2) TGL6 (3) #2-250. SAFETY SWITCH GROUND KIT
- (1) TWO CONDUCTOR, TWO HOLE NEMA 2-600KCMIL MECHANICAL LUGS

4 GENERATOR CONNECTION BOX ELEVATION
E7 1/2" = 1'-0"

Order plans @ www.wawadirect.com