

SHEET GENERAL NOTES

- SEE GENERAL NOTES AND SPECIFICATIONS FOR ADDITIONAL REQUIREMENTS NOT SHOWN HERE TO INCLUDE PAINTING / COATING REQUIREMENTS.
- DETAILS FOR CONNECTIONS ARE SCHEMATIC. STEEL FABRICATOR SHALL PROVIDE FINAL CONNECTION DESIGN. LIGHT GAUGE METAL SUPPLIER SHALL ADOPT REQUIRED COMPONENTS AS SHOWN IN THE DETAILS AND ADJUST TO SPECIFIC FIELD CONDITIONS.

EXTERIOR COLD FORM FRAMING NOTES

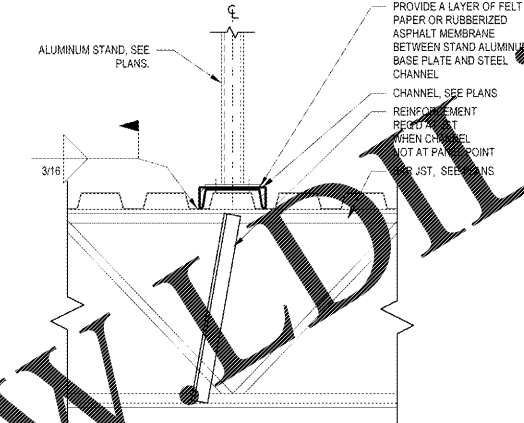
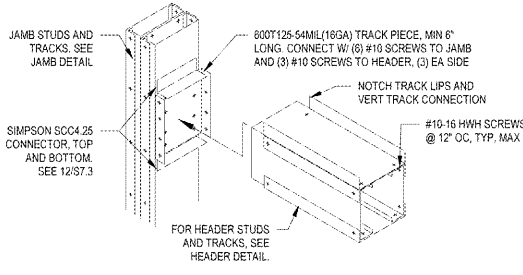
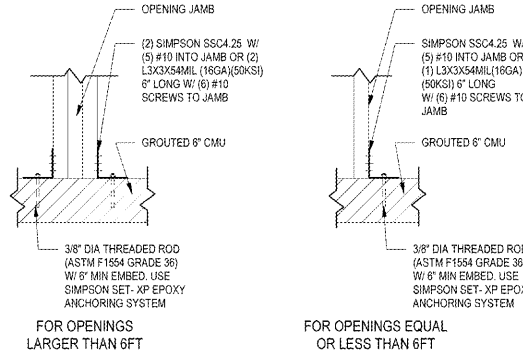
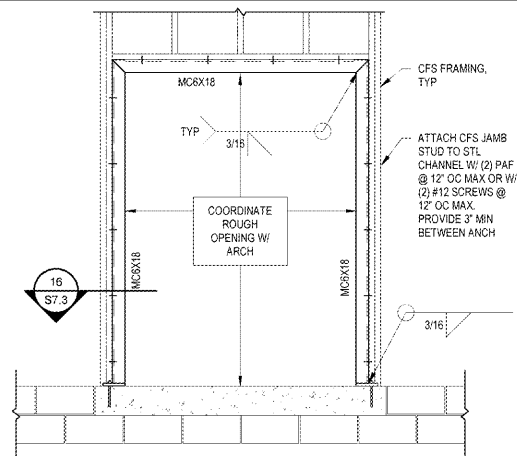
ITEM	NOTES	COMMENTS
6\"/>		

16
S7.3
1 1/2\"/>

12
S7.3
1 1/2\"/>

8
S7.3
3\"/>

4
S7.3
1 1/2\"/>



15
S7.3
1 1/2\"/>

11
S7.3
1\"/>

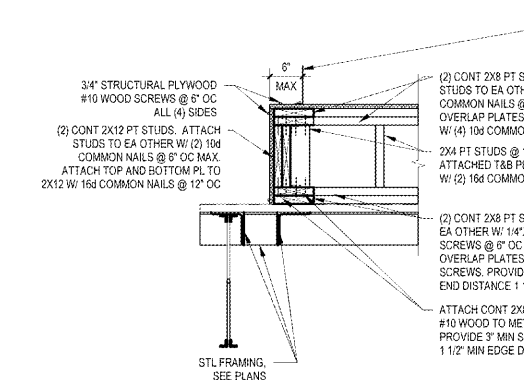
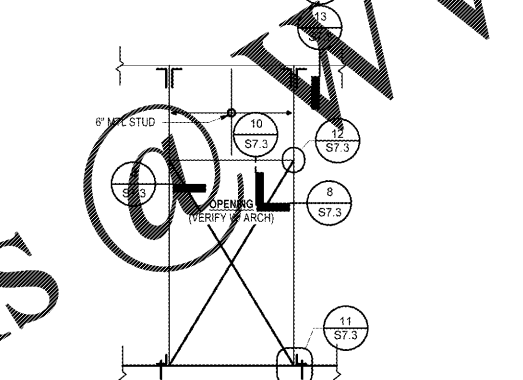
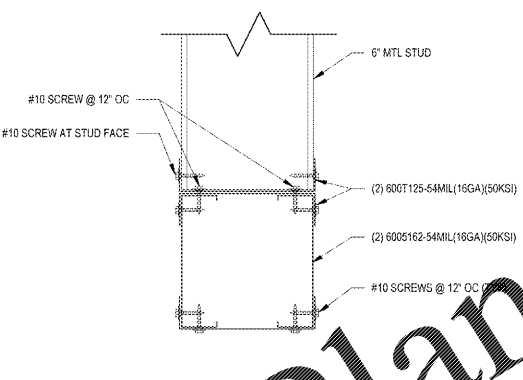
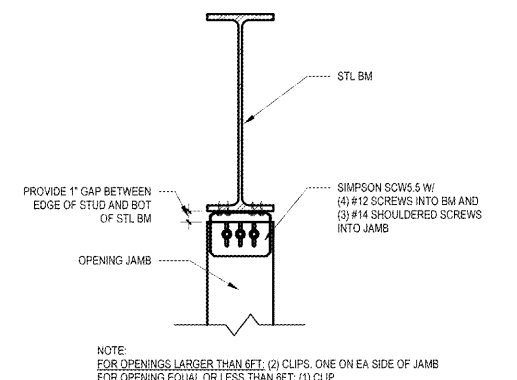
7
S7.3
3/4\"/>

3
S7.3
1 1/2\"/>

COLD FORM CONNECTOR NOTES

FASTENER TYPE	FASTENER INFORMATION	APPLICATION	COMMENTS
PNEUMATIC FASTENERS	KNORR PNEUMATIC SERIES PNEUMATIC FASTENERS	EXTERIOR WALL SHEATHING TO METAL STUDS	2\"/>
PAF	PNEUMATIZED - 0.157\"/>		
PAF	0.157\"/>		
#10 SCREW	#10 SELF-DRILLING SCREW	COLD FORM STEEL TO METAL DECK	16 THREADS PER INCH, #1 DRILL POINT
#10 SCREW	#10 SELF-DRILLING SCREW	COLD FORM STEEL TO COLD FORM STEEL (18GA OR THICKER)	16 THREADS PER INCH, #3 DRILL POINT
#10 SCREW	#10 SELF-DRILLING SCREW	COLD FORM STEEL TO STRUCTURAL STEEL	24 THREADS PER INCH, #3 DRILL POINT
#12 SCREW	#12 SELF-DRILLING SCREW	COLD FORM STEEL TO COLD FORM STEEL (18GA OR THICKER)	14 THREADS PER INCH, #3 DRILL POINT
#12 SCREW	#12 SELF-DRILLING SCREW	COLD FORM STEEL TO STRUCTURAL STEEL	14 THREADS PER INCH, #5 DRILL POINT
#14 SHOULDERED SCREW	SIMPSON XLSH7881414 SHOULDERED SCREW	COLD FORM STEEL JAMB TO HEAD OF WALL CONNECTION	

NOTES:
 1. SEE SHEET S1 FOR APPROVED FASTENERS.
 2. GALVANIZED FASTENERS REQUIRED AT ALL EXTERIOR CONNECTIONS.
 3. CONSULT MANUFACTURER PRODUCT DATA FOR DRILL POINT REQUIRED FOR BASE MATERIAL.

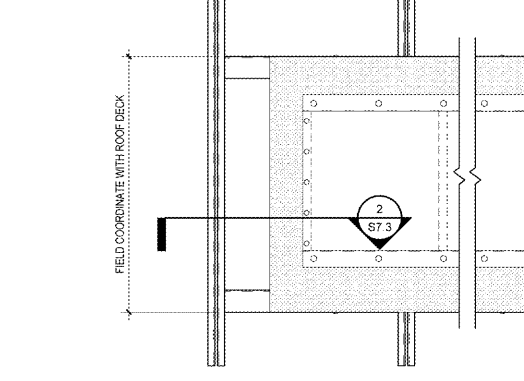
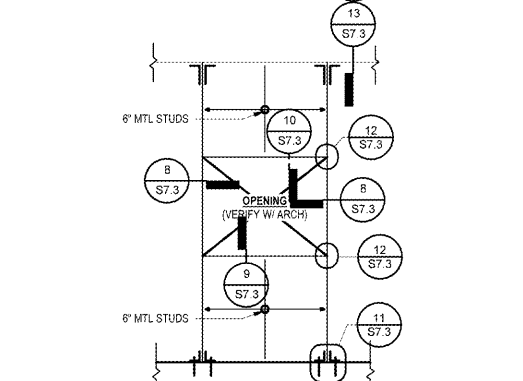
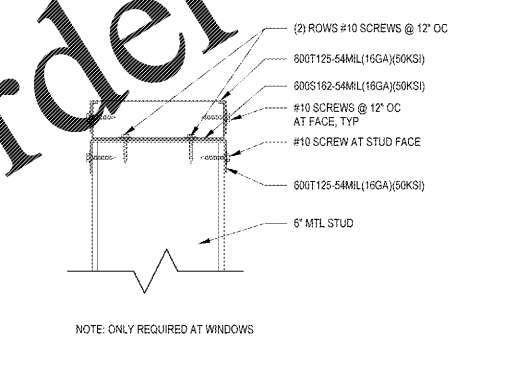
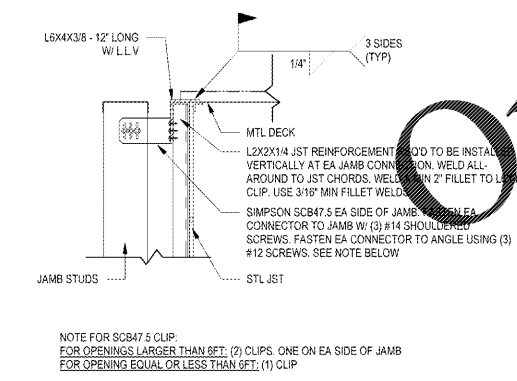


14
S7.3
1 1/2\"/>

10
S7.3
3\"/>

6
S7.3
1 1/2\"/>

2
S7.3
3/4\"/>



13
S7.3
1\"/>

9
S7.3
3\"/>

5
S7.3
1 1/2\"/>

1
S7.3
3/4\"/>

Order Plans

1925 Prospect Ave.
 Orlando, FL 32814
 P (407) 661-9100
 F (407) 661-9101
www.c&p.com

WAWA
 280 W. BALTIMORE PIKE
 WAWA, PA 19083

PROJECT NAME: W50FB-VA 2018.01-MA
 STORE #6668-SUD
 10891 DAVIDSON PLACE
 MANASSAS, VA 20109
 SHEET TITLE: FRAMING DETAILS

No.	Description	Date
1	PERMIT SET	01/04/2019
1	PERMIT COMMENTS	03/15/2019
	BID SET	08/27/2019

S7.3