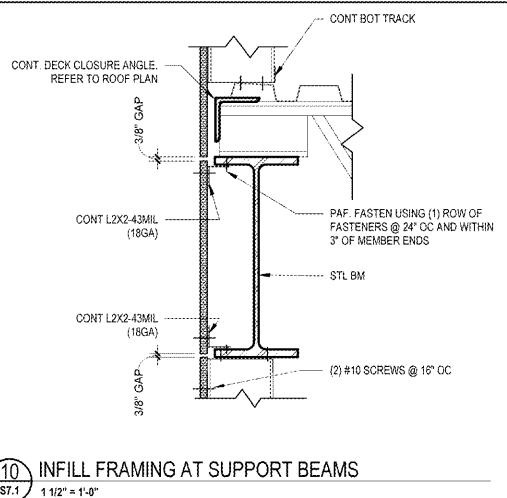
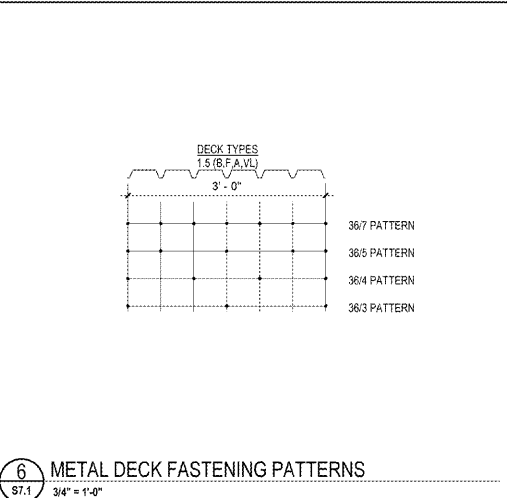


14  
S7.1  
1 1/2" x 1'-0"



10  
S7.1  
1 1/2" x 1'-0"

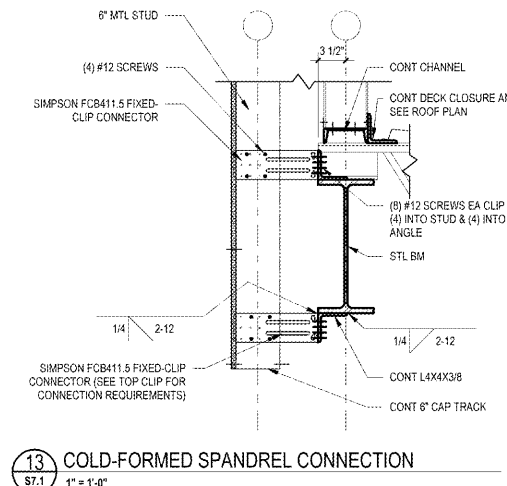


6  
S7.1  
3/4" x 1'-0"

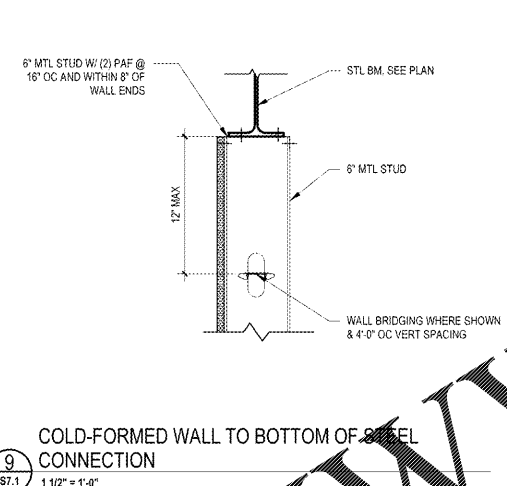
SHEET GENERAL NOTES

- SEE GENERAL NOTES AND SPECIFICATIONS FOR ADDITIONAL REQUIREMENTS NOT SHOWN HERE TO INCLUDE PAINTING / COATING REQUIREMENTS.
- DETAILS FOR CONNECTIONS ARE SCHEMATIC. STEEL FABRICATOR SHALL PROVIDE FINAL CONNECTION DESIGN. LIGHT GAUGE METAL SUPPLIER SHALL ADOPT REQUIRED COMPONENTS AS SHOWN IN THE DETAILS AND ADJUST TO SPECIFIC FIELD CONDITIONS.

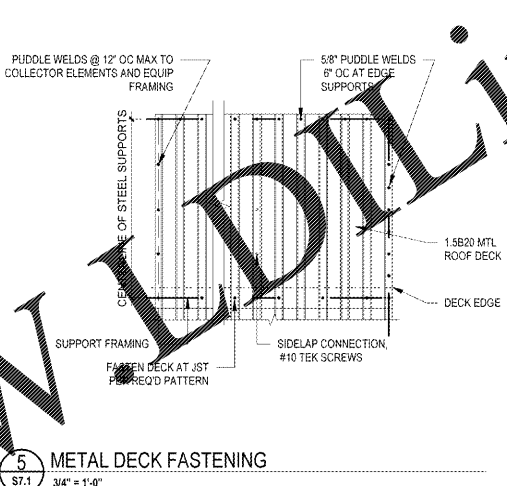
EXTERIOR COLD FORM FRAMING NOTES		
ITEM	NOTES	COMMENTS
6\"/>		



13  
S7.1  
1" x 1'-0"



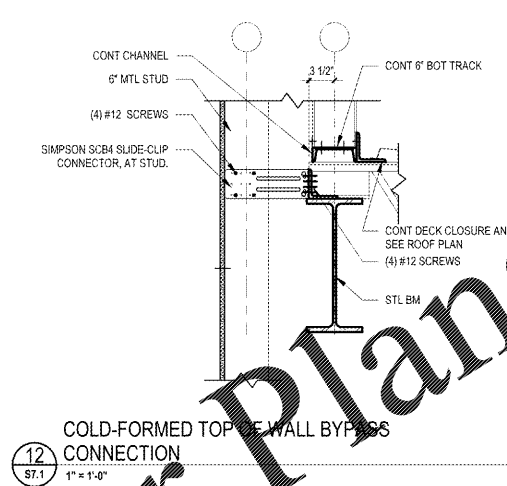
9  
S7.1  
1 1/2" x 1'-0"



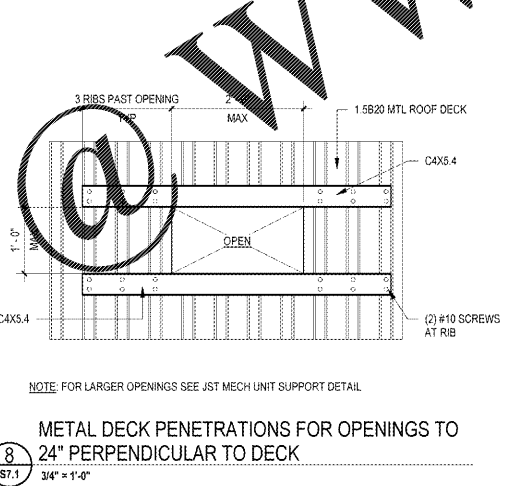
5  
S7.1  
3/4" x 1'-0"

COLD FORM CONNECTOR NOTES

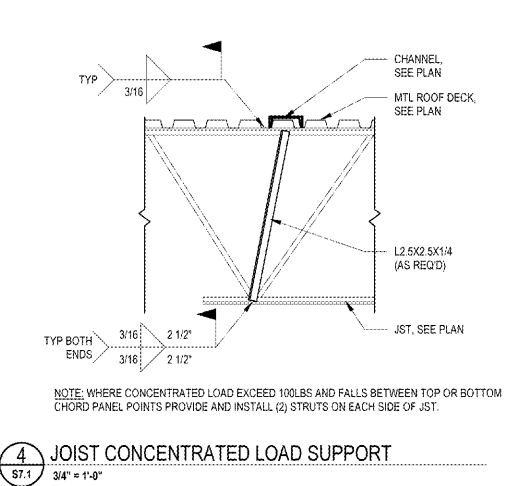
FASTENER TYPE	FASTENER INFORMATION	APPLICATION	COMMENTS
PAF	0.157\"/>		



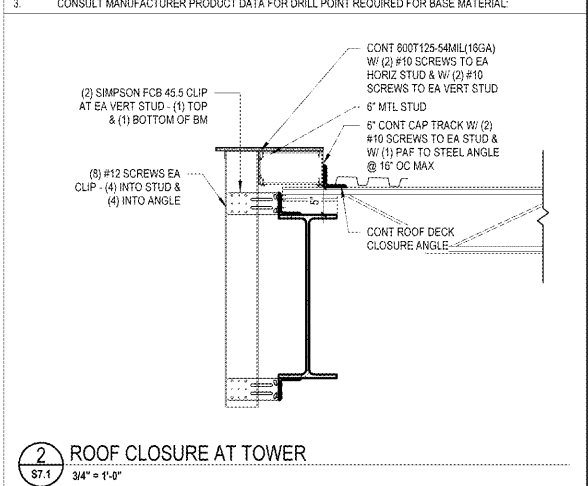
12  
S7.1  
1" x 1'-0"



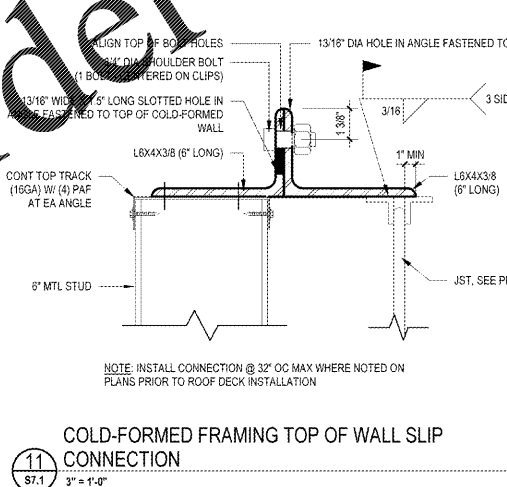
8  
S7.1  
3/4" x 1'-0"



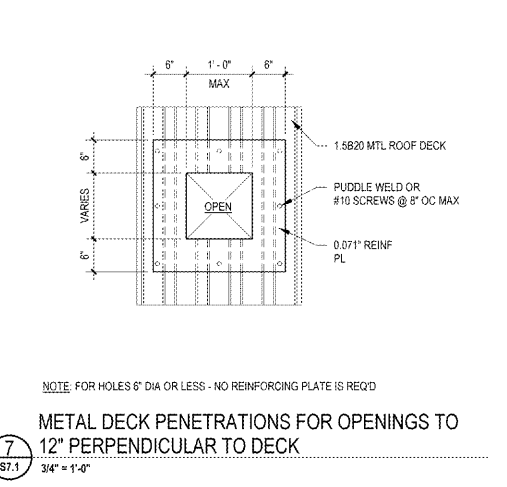
4  
S7.1  
3/4" x 1'-0"



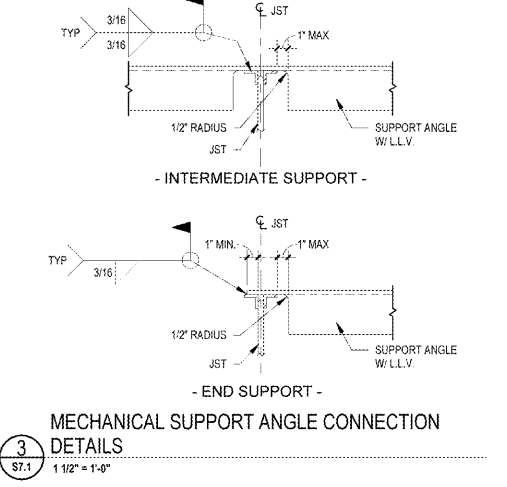
2  
S7.1  
3/4" x 1'-0"



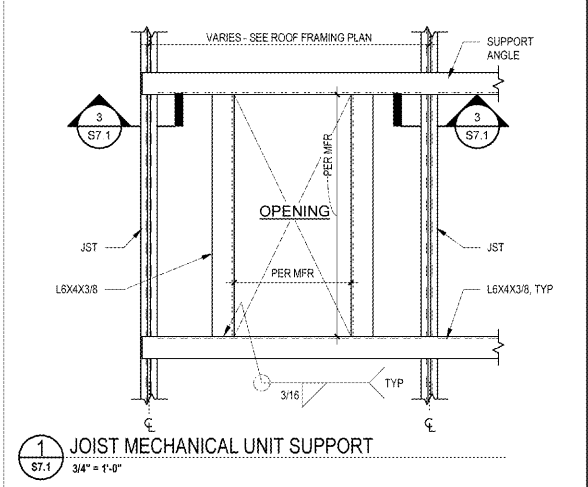
11  
S7.1  
3" x 1'-0"



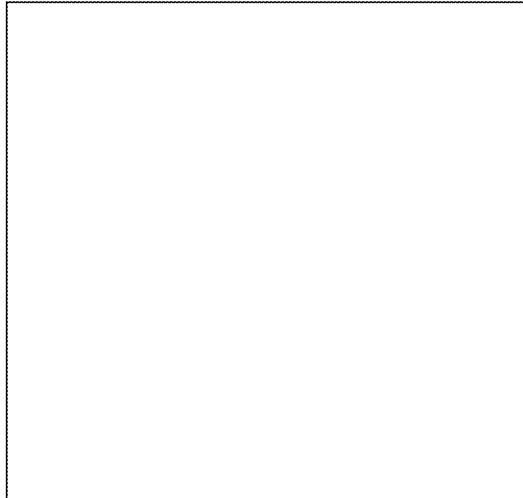
7  
S7.1  
3/4" x 1'-0"



3  
S7.1  
1 1/2" x 1'-0"



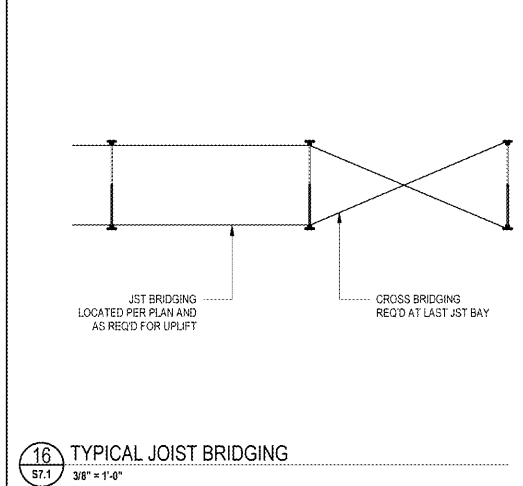
1  
S7.1  
3/4" x 1'-0"



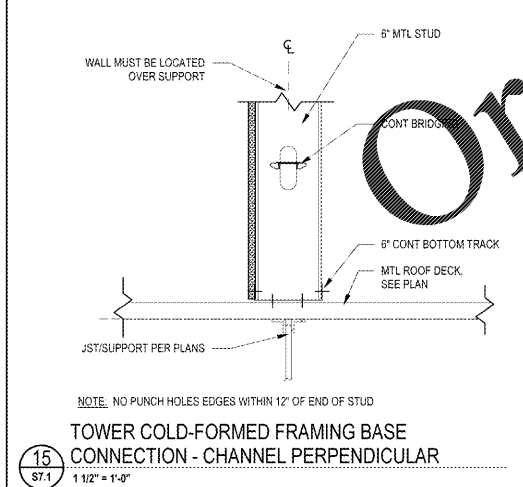
15  
S7.1  
1 1/2" x 1'-0"



16  
S7.1  
3/8" x 1'-0"



17  
S7.1  
3/8" x 1'-0"



15  
S7.1  
1 1/2" x 1'-0"

Order Plans

WWW.LDLINE.COM

FASTENER INFORMATION

FASTENER TYPE	FASTENER INFORMATION	APPLICATION	COMMENTS
PAF	0.157\"/>		

1925 Prospect Ave.  
Orlando, FL 32814  
P (407) 661-9100  
F (407) 661-9101  
www.ldline.com

**Chidaci & Peterson**  
Architects Engineers Planners  
ORLANDO • PHILADELPHIA

CLIENT NAME  
**WAWA**  
260 W. BALTIMORE PIKE  
WAWA, PA 19063

PROJECT NAME  
W50FB-VA 2018.01-MA  
STORE #8668-SUD  
10891 DAVIDSON PLACE  
MANASSAS, VA 20109

DATE  
01/04/2019  
PERMIT SET  
03/15/2019  
PERMIT COMMENTS

NO. 1  
DATE 01/04/2019  
DRAWN RC  
CHECKED JJ

2170584

S7.1