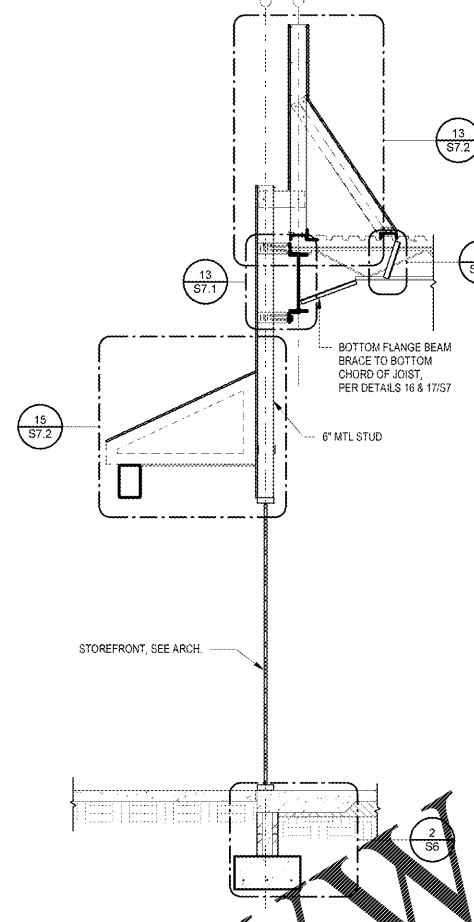
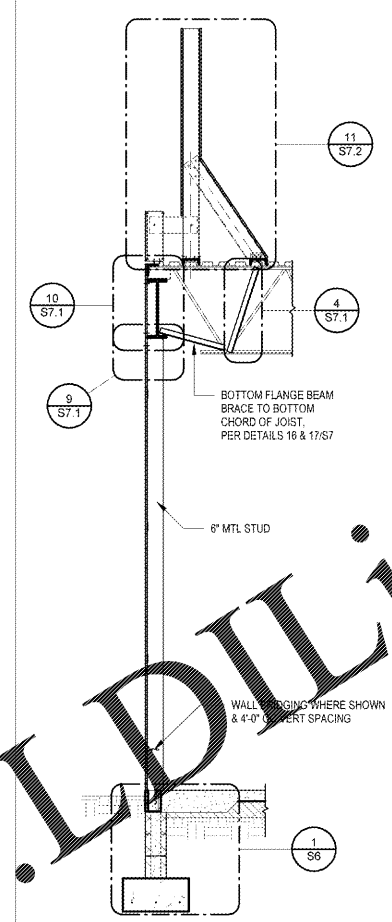


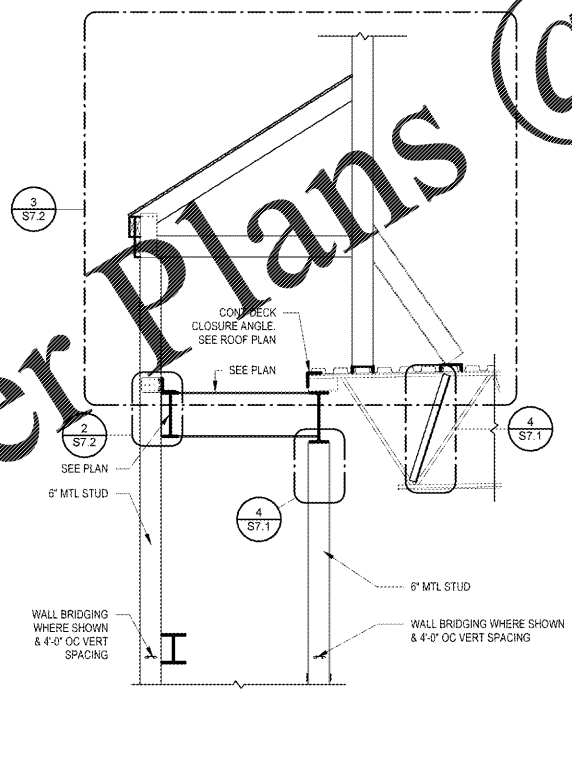
6 FRONT TOWER FRAMING SECTION
1/2" = 1'-0"



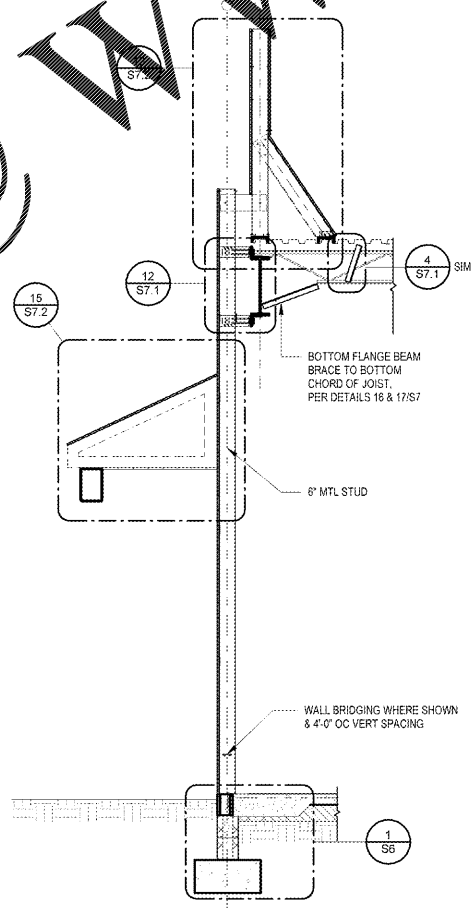
4 FRONT WALL SECTION WITH WINDOWS
3/8" = 1'-0"



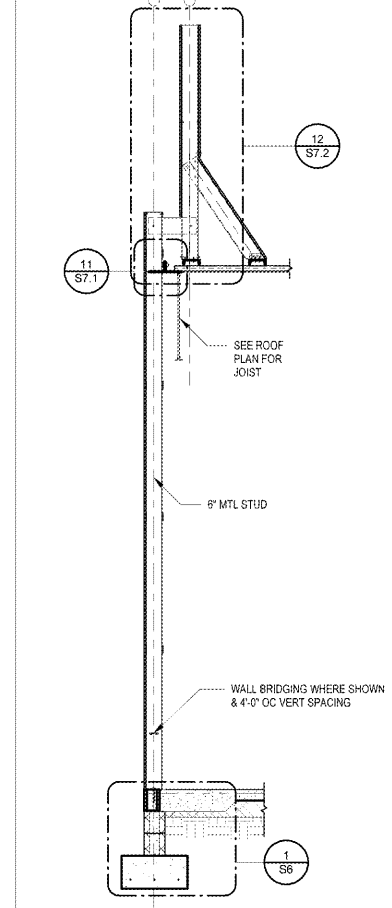
2 BACK WALL SECTION
3/8" = 1'-0"



5 REAR TOWER FRAMING SECTION
1/2" = 1'-0"



3 FRONT WALL SECTION
3/8" = 1'-0"



1 SIDE WALL SECTION
3/8" = 1'-0"

SHEET GENERAL NOTES

- SEE GENERAL NOTES AND SPECIFICATIONS FOR ADDITIONAL REQUIREMENTS NOT SHOWN HERE TO INCLUDE PAINTING / COATING REQUIREMENTS.
- DETAILS FOR CONNECTIONS ARE SCHEMATIC. STEEL FABRICATOR SHALL PROVIDE FINAL CONNECTION DESIGN. LIGHT GAUGE METAL SUPPLIER SHALL ADOPT REQUIRED COMPONENTS AS SHOWN IN THE DETAILS AND ADJUST TO SPECIFIC FIELD CONDITIONS.

EXTERIOR COLD FORM FRAMING NOTES

ITEM	NOTES	COMMENTS
6" WALL STUDS	600S182-54ML(16GA)(50KS) PUNCHED STUD SPACED @ 16" OC MAX	ALL EXTERIOR WALLS
6" CONT TOP TRACK @ ROOF DECK	CONT 600T125-54ML(16GA)(50KS) W/ (2) #10 SCREWS TO EA STUD	
6" CONT BOT TRACK @ ROOF DECK	CONT 600T125-54ML(16GA)(50KS) W/ (2) #10 SCREWS TO EA STUD & (2) #8 SCREWS TO ROOF DECK @ 12" OC AND AT EA END OF TRACK	
6" CONT BOT TRACK @ STL CHANNELS	CONT 600T125-54ML(16GA)(50KS) W/ (2) 0.157" DIA PAF TO STL CHANNEL 12" OC AND AT END OF TRACK	
6" CONT BOT TRACK TO FOUNDATION WITHIN WALLS	SIMPSON TITEN HD 1/2" DIA X 12" L SCREWS TO FOUNDATION @ 16" OC & WITHIN WALLS	
CONT BRIDGING	CONT COLD ROLLED (U-CHANNEL) & SIMPSON STRONG-TIE SUBH3 25 W/ (1) #10 SCREW TO CONT CHANNEL	4'-0" OC VERT SPACING & 12" FROM EA END OF STUD

COLD FORM CONNECTOR NOTES

FASTENER TYPE	FASTENER INFORMATION	APPLICATION	COMMENTS
ET&F PANELFAST FASTENERS	ET&F PANELFAST KNURLED AGS-100 SERIES PNEUMATIC FASTENERS	EXTERIOR WALL SHEATHING TO METAL STUDS	2" OC AT SHEATHING PANEL EDGES (AT STRAPPING) & 12" OC IN FIELD
PAF	GALVANIZED - 0.157" DIA POWDER ACTUATED FASTENER	EXTERIOR APPLICATIONS	SIMPSON PDPA OR HLTIX-UPAF
PAF	0.157" DIA POWDER ACTUATED FASTENER	INTERIOR APPLICATIONS	SIMPSON PDPA OR HLTIX-UPAF
#10 SCREW	#10 SELF-DRILLING SCREW	COLD FORM STEEL TO METAL DECK	16 THREADS PER INCH, #1 DRILL POINT
#10 SCREW	#10 SELF-DRILLING SCREW	COLD FORM STEEL TO COLD FORM STEEL (18GA OR THICKER)	16 THREADS PER INCH, #3 DRILL POINT
#10 SCREW	#10 SELF-DRILLING SCREW	COLD FORM STEEL TO STRUCTURAL STEEL	24 THREADS PER INCH, #3 DRILL POINT
#12 SCREW	#12 SELF-DRILLING SCREW	COLD FORM STEEL TO COLD FORM STEEL (18GA OR THICKER)	14 THREADS PER INCH, #3 DRILL POINT
#12 SCREW	#12 SELF-DRILLING SCREW	COLD FORM STEEL TO STRUCTURAL STEEL	14 THREADS PER INCH, #5 DRILL POINT
#14 SHOULDERED SCREW	SIMPSON XLSH781414 SHOULDERED SCREW	COLD FORM STEEL JAMB TO HEAD OF WALL CONNECTION	

- NOTES:
- SEE SHEET S1 FOR APPROVED FASTENERS
 - GALVANIZED FASTENERS REQUIRED AT ALL EXTERIOR CONNECTIONS
 - CONSULT MANUFACTURER PRODUCT DATA FOR DRILL POINT REQUIRED FOR BASE MATERIAL

Order Plans @

WWW.LDILINE.COM

1925 Prospect Ave.
Orlando, FL 32814
P (407) 661-9100
F (407) 661-9101
www.c-p.com

Chalaci & Peterson
Architects Engineers Planners

CLIENT NAME
WAWA
280 W. BALTIMORE PIKE
WAWA, PA 19063

PROJECT NAME
W50FB-VA 2018.01-MA
STORE #8668-SUD
10891 DAVIDSON PLACE
MANASSAS, VA 20109

Revision Schedule	No.	Description	Date
	1	PERMIT SET	01/04/2019
	A	REVISION 1	02/05/2019
	1	PERMIT COMMENTS	03/15/2019
		BID SET	06/27/2019

PROJECT NO.
2170584
DATE
01/04/2019
DRAWN
RC
CHECKED
JJ

S5

COLD FORMED FRAMING SECTIONS