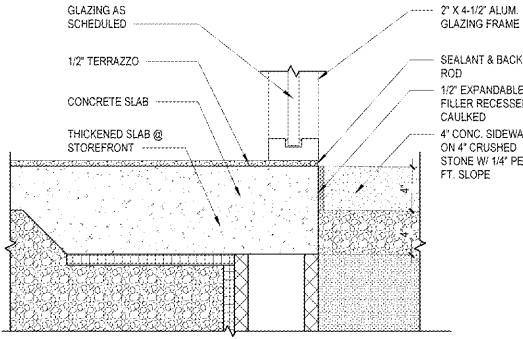
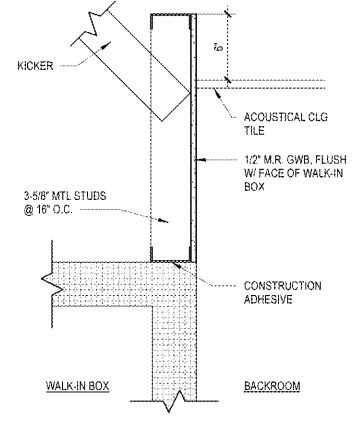


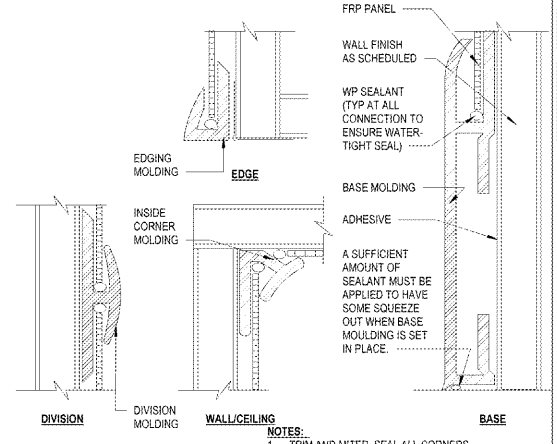
5 SURGE TANK SHELF DETAIL
A11 1/2" = 1'-0"



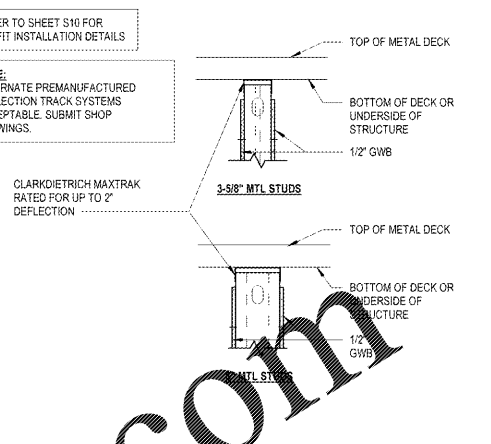
4 SECTION @ STOREFRONT GLAZING
A11 1 1/2" = 1'-0"



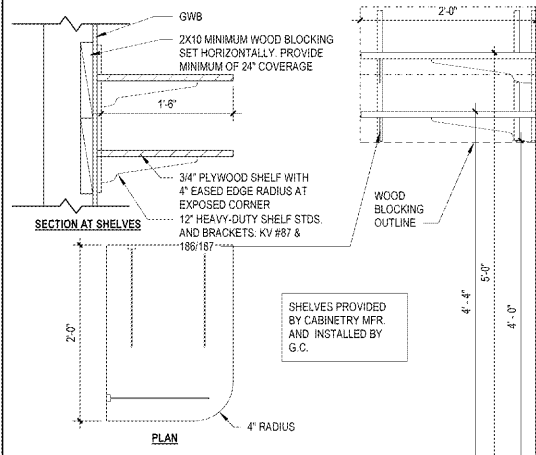
3 FASCIA AT WALK-IN REFRIGERATOR / FREEZER
A11 1 1/2" = 1'-0"



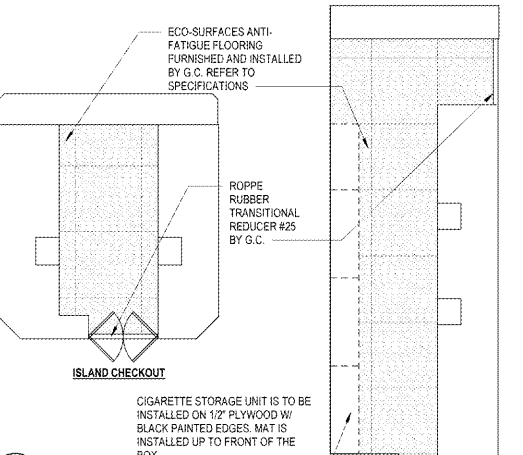
2 FRP DETAILS
A11 1/2" = 1'-0"



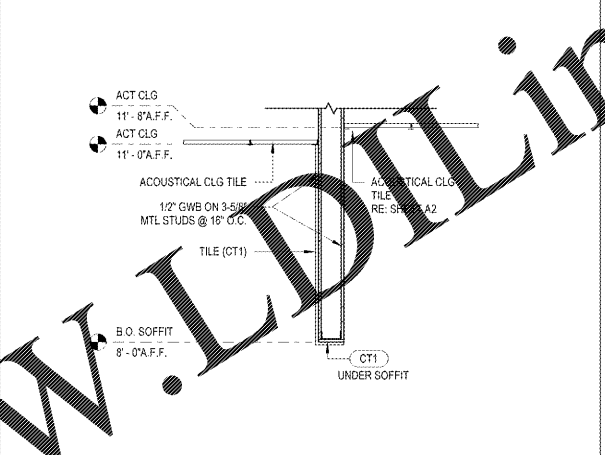
1 DEFLECTION TRACK @ INT. WALL
A11 1/2" = 1'-0"



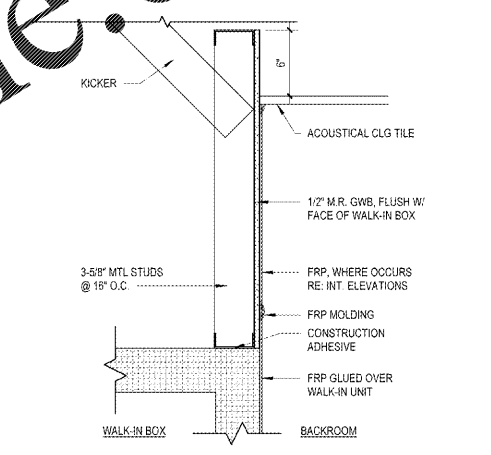
10 OFFICE SHELVING DETAIL
A11 1" = 1'-0"



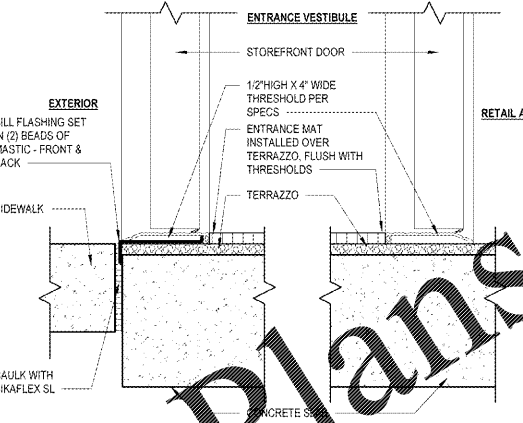
9 CHECKOUT FLOORING DETAIL
A11 1/4" = 1'-0"



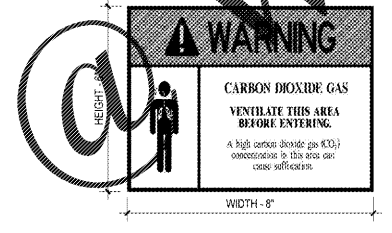
7 FOOD SERVICE SOFFIT
A11 3/4" = 1'-0"



6 FASCIA AT WALK-IN BOX
A11 1 1/2" = 1'-0"



14 ENTRANCE MAT DETAIL
A11 3" = 1'-0"



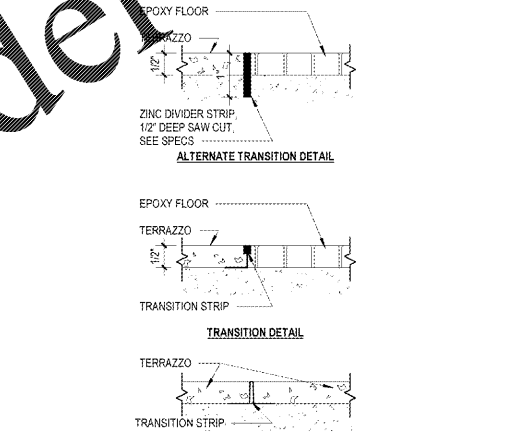
13 CO2 WARNING SIGNAGE
A11 N.T.S.

GLAZING NOTES:

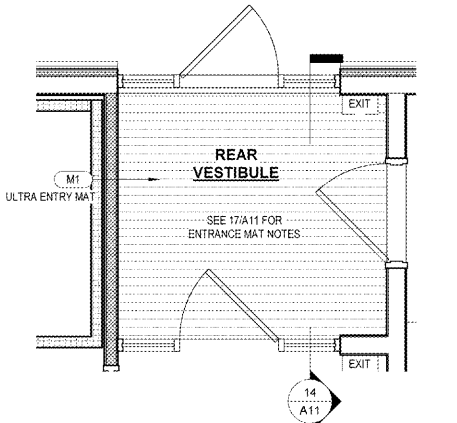
- ALL GLAZING AT VESTIBULE TO BE SAFETY RATED WITH PERMANENT IDENTIFICATION MARK ISSUED BY AN APPROVED AGENCY.
- FOR ADA GRAPHIC LOCATION ON THE VESTIBULE REFER TO SHEET A10.1, VESTIBULE ELEVATIONS.

ENTRANCE MAT NOTES:

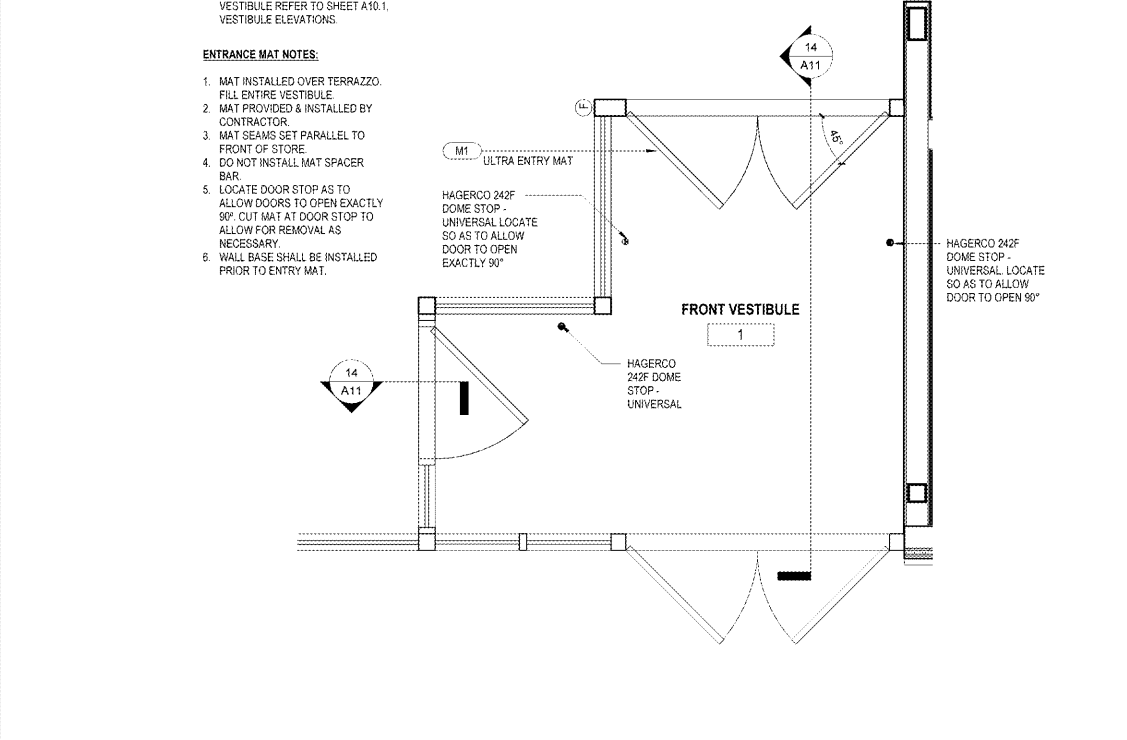
- MAT INSTALLED OVER TERRAZZO. FILL ENTIRE VESTIBULE.
- MAT PROVIDED & INSTALLED BY CONTRACTOR.
- MAT SEAMS SET PARALLEL TO FRONT OF STORE.
- DO NOT INSTALL MAT SPACER BAR.
- LOCATE DOOR STOP AS TO ALLOW DOORS TO OPEN EXACTLY 90°. CUT MAT AT DOOR STOP TO ALLOW FOR REMOVAL AS NECESSARY.
- WALL BASE SHALL BE INSTALLED PRIOR TO ENTRY MAT.



19 TERRAZZO DETAILS
A11 6" = 1'-0"



18 VESTIBULE MAT-REAR
A11 3/8" = 1'-0"



17 VESTIBULE MAT-FRONT
A11 1/2" = 1'-0"

Order Plans

WWW.LDLINE.COM

1925 Prospect Ave.
Orlando, FL 32814
P (407) 661-9100
F (407) 661-9101
www.l-d.com

LD
Chiaci & Peterson
Architects Engineers Planners

CLIENT NAME
WAWA
280 W. BALTIMORE PIKE
WAWA, PA 19063

PROJECT NAME
W50FB-VA 2018.01-MA STORE #6688-SUD
10081 DAVIDSON PLACE
MANASSAS, VA 20109

Revision Schedule	No.	Description	Date
	1	PERMIT SET	01/04/2019
	1	PERMIT COMMENTS	03/15/2019
		BID SET	08/27/2019

PROJECT NO.
2-70594
DATE
01/04/2019
DRAWN
LVA
CHECKED
[Signature]

A11