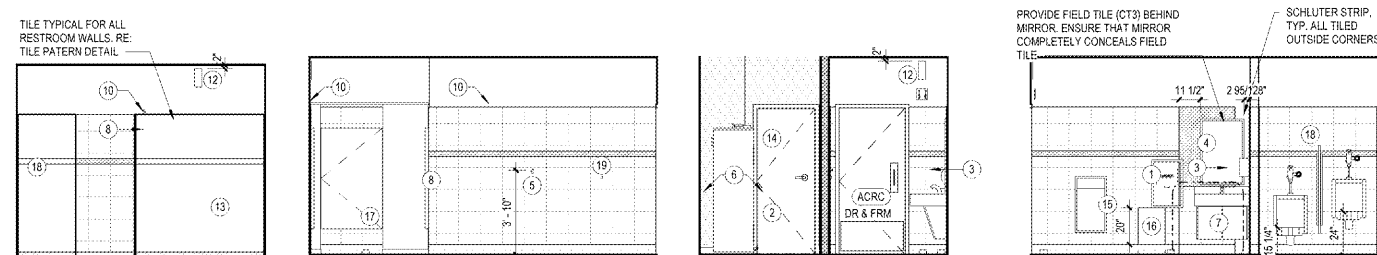
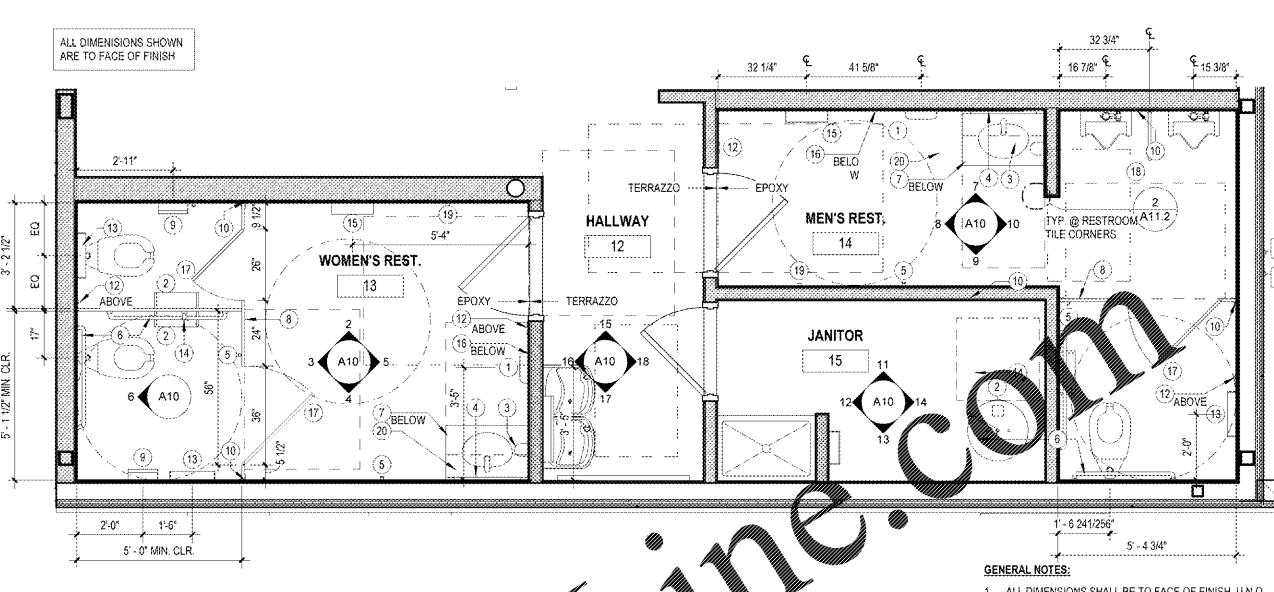


6 WOMEN'S ELEVATION A10 1/4" = 1'-0"
 5 WOMEN'S ELEVATION A10 1/4" = 1'-0"
 4 WOMEN'S ELEVATION A10 1/4" = 1'-0"
 3 WOMEN'S ELEVATION A10 1/4" = 1'-0"
 2 WOMEN'S ELEVATION A10 1/4" = 1'-0"

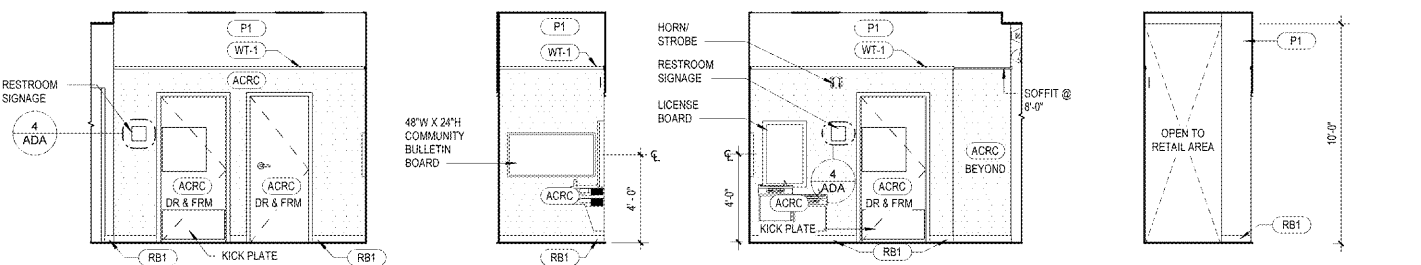


10 MEN'S ELEVATION A10 1/4" = 1'-0"
 9 MEN'S ELEVATION A10 1/4" = 1'-0"
 8 MEN'S ELEVATION A10 1/4" = 1'-0"
 7 MEN'S ELEVATION A10 1/4" = 1'-0"

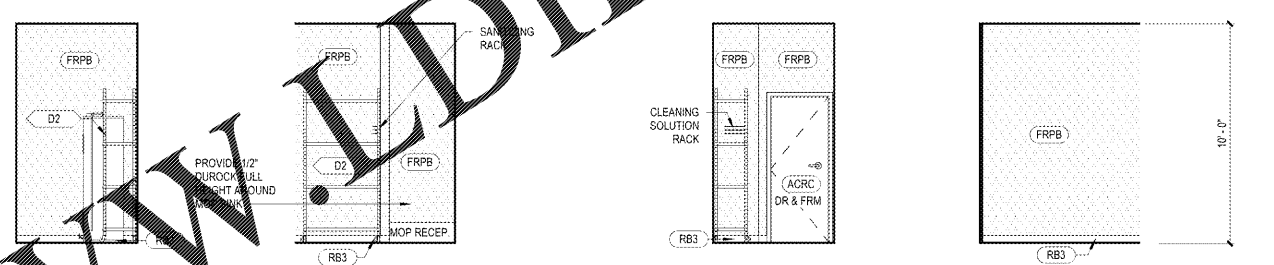


1 PUBLIC RESTROOM PLAN A10 3/8" = 1'-0"

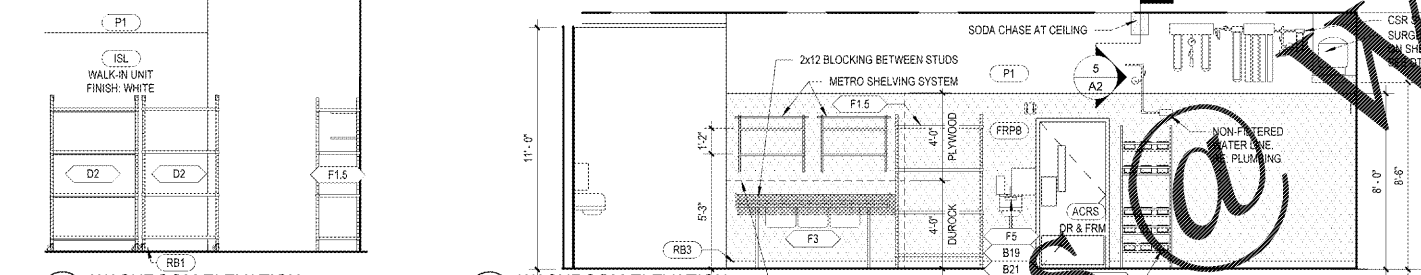
GENERAL NOTES:
 1. ALL DIMENSIONS SHALL BE TO FACE OF FINISH, U.N.O.
 2. INSTALL A BEAD OF CLEAR SILICONE AROUND ALL TOILET SENSORS AND ESCUTCHEON RINGS



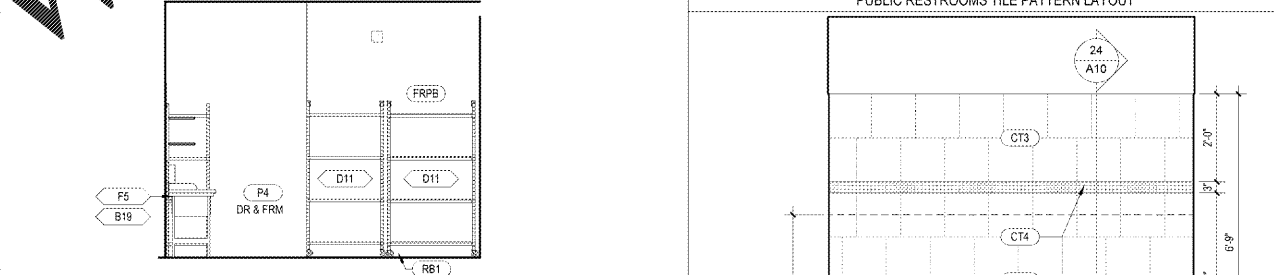
18 HALLWAY ELEV. A10 1/4" = 1'-0"
 17 HALLWAY ELEV. A10 1/4" = 1'-0"
 16 HALLWAY ELEV. A10 1/4" = 1'-0"
 15 HALLWAY ELEV. A10 1/4" = 1'-0"



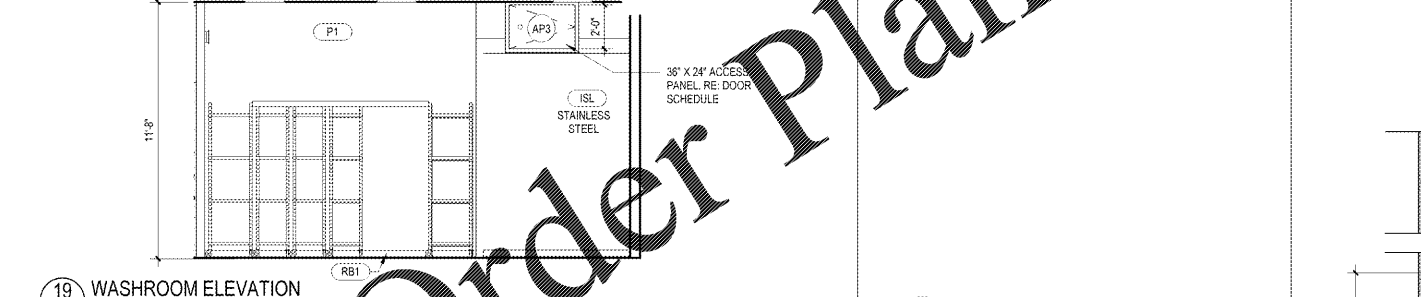
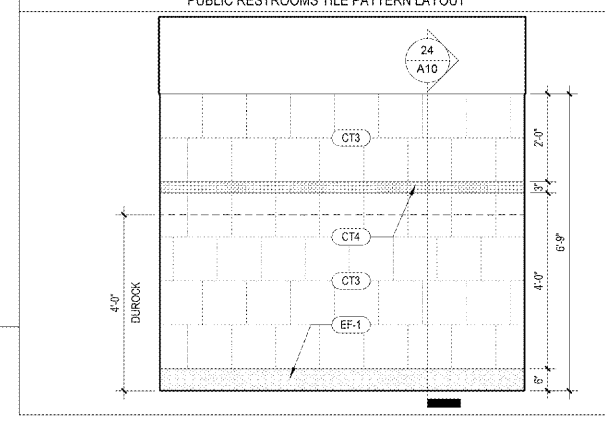
14 JANITOR ELEV. A10 1/4" = 1'-0"
 13 JANITOR ELEV. A10 1/4" = 1'-0"
 12 JANITOR ELEV. A10 1/4" = 1'-0"
 11 JANITOR ELEV. A10 1/4" = 1'-0"



22 WASHROOM ELEVATION A10 1/4" = 1'-0"
 21 WASHROOM ELEVATION A10 1/4" = 1'-0"

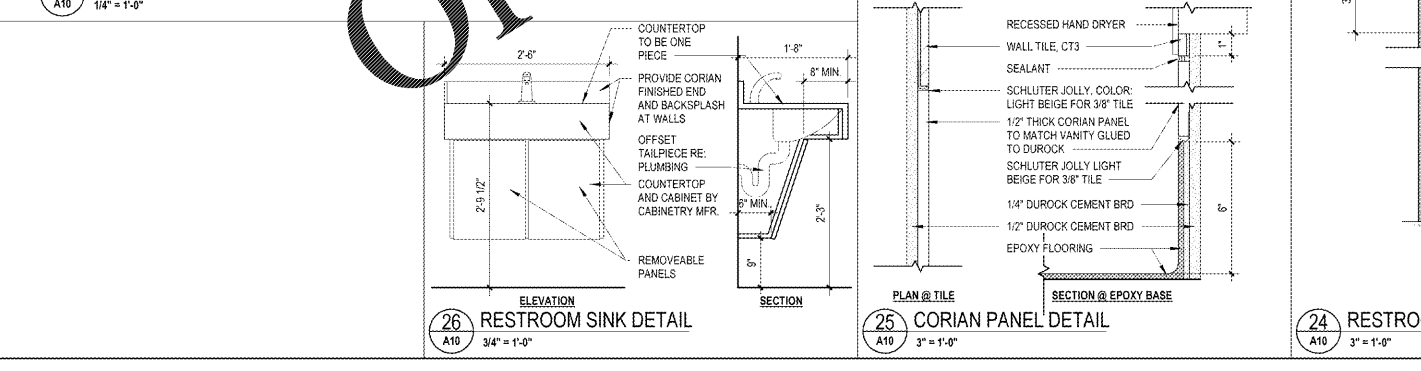


20 WASHROOM ELEVATION A10 1/4" = 1'-0"



19 WASHROOM ELEVATION A10 1/4" = 1'-0"

RESTROOM ACCESSORIES SCHEDULE					ALL ACCESSORIES SUPPLIED BY WAWA VENDOR INSTALLED BY G.C. UNLESS NOTED OTHERWISE
#	ITEM	MFR.	MODEL #	REMARKS	SUPPLIED BY
1	ELECTRONIC HAND DRYER	EXCEL DRYER INC.	XLERATOR XL-C	CHROME ELECTRONIC HAND DRYER WITH RECESSED KIT	HJC
2	T.P. HOLDER			7" MIN. - 9" MAX. IN FRONT OF W.C. SUPPLIED BY WAWA	HJC
3	SOAP DISPENSER	TORK	571608 BLACK	TOUCHLESS ELECTRONIC SOAP DISPENSER - BATTERY OPERATED	HJC
4	MIRROR	BRADLEY	780-2438	24" X 36" MIRROR W/ S.S. FRAME IN SATIN FINISH. BOTTOM @ 3'-2" A.F.F.	HJC
5	COAT HOOK	BOBRICK	B-233	STAINLESS STEEL WITH SATIN FINISH MOUNT @ 48" A.F.F. PROVIDE (1) PER RESTROOM (1) IN ACCESSIBLE STALL	HJC
6	GRAB BAR	BRADLEY	812-00142	STAINLESS STEEL WITH SATIN FINISH. MOUNT HORIZ. RAILS @ 34 1/2" A.F.F. BOTH RAILS 42" IN LENGTH	HJC
7	LAV CABINET			CABINET BELOW LAVATORY SUPPLIED AND INSTALLED BY CABINET VENDOR. COORDINATED BY G.C.	CABINET
7A	LAV SHIELD	TRUEBRO	2018-AS-L	FOR AMERICAN STANDARD "LUCERNE" LAVATORY	HJC
8	TOILET PARTITION	BRADLEY	BRADMAR-M244 CANYON GRANITE	SOLID PLASTIC PARTITIONS (NO SITE LINES) W/ S.S. PRIVACY SLATS. PROVIDE PULLS ON BOTH SIDES OF ADA STALL DOOR.	HJC
9	NAPKIN DISPOSAL UNIT	BRADLEY	4722-15	STAINLESS STEEL WITH SATIN FINISH. WOMEN'S ROOM ONLY	HJC
10	PARTITION WALL BRACKET	BRADLEY		MOUNT ON TOP RAIL WHERE PARTITIONS MEET WALL	HJC
12	ECONOMIZER DISPENSER	MICROBURST	8000 401375	TWO UNITS PER RESTROOM SCREW TO WALLS, ONE NEAR DOOR AND OTHER ON OPPOSITE WALL. TOP 2" MIN. FROM CEILING	WAWA
13	TOILET SEAT COVER DISP.			ONE PER STALL - FURNISHED BY WAWA. INSTALLED BY G.C.	HJC
14	GRAB BAR	BRADLEY	812-00118	STAINLESS STEEL FINISH. MOUNT BAR VERTICALLY 41" OFF BACK WALL TO CNTR. & 39" FROM FL. TO BOTTOM	HJC
15	WASTE RECEPT	BOBRICK	B-3644	RECESSED INTO WALL - 4" RECESS REQUIRED. 4" PROTRUDING BIN	HJC
16	SOLID SURFACE PANEL	DUPONT CORIAN		COLOR: COTTAGE LANE 1/2" THICK, 14 3/4" WIDE X 20" HIGH PANEL MOUNTED 8" A.F.F. LOCATED BELOW HAND DRYER. SUPPLIED BY CABINET VENDOR. INSTALLED BY G.C.	CABINET
17	DOOR STOP (PARTITION)	BRADLEY		SUPPLIED BY TOILET PARTITION MANUFACTURER. LOCATE AT BOTTOM OUTSIDE CORNER OF DOOR	HJC
18	URINAL SCREEN	BRADLEY	18" WIDE WALL MTD.	BRADMAR PLASTIC PARTITIONS. COLOR: CANYON GRANITE	HJC
19	DOOR STOP	HAGER	236W	FOR R.R. ENTRY DOOR. COORDINATE W/ DOOR HARDWARE. SUPPLIED BY DOOR HARDWARE VENDOR	GC
20	SOLID SURFACE COUNTERTOP	DUPONT CORIAN		COLOR: COTTAGE LANE COUNTERTOP, BACKSPLASH AT WALLS, HIGH GLOSS FINISH	CABINET



26 RESTROOM SINK DETAIL A10 3/4" = 1'-0"
 25 CORIAN PANEL DETAIL A10 3" = 1'-0"
 24 RESTROOM COVE BASE A10 3" = 1'-0"

Order Plans @

WWW.IDIline.com

1925 Prospect Ave.
 Orlando, FL 32814
 P (407) 661-9100
 F (407) 661-9101
 www.c-p.com

Chiacri & Peterson
 Architects Engineers Planners

CLIENT NAME
WAWA
 280 W. BALTIMORE PIKE
 WAWA, PA 19063

PROJECT NAME
WS0FB-VA 2018.01-MA
STORE #6658-SUD
 10691 DAVIDSON PLACE
 MANASSAS, VA 20109

REVISION SCHEDULE

No.	Description	Date
1	PERMIT SET	01/04/2019
1	PERMIT COMMENTS	03/15/2019
	BID SET	08/27/2019

PROJECT NO.
 277054

DATE	DRAWN	C-P	CHECKED
01/04/2019			

A10

INTERIOR ELEVATIONS