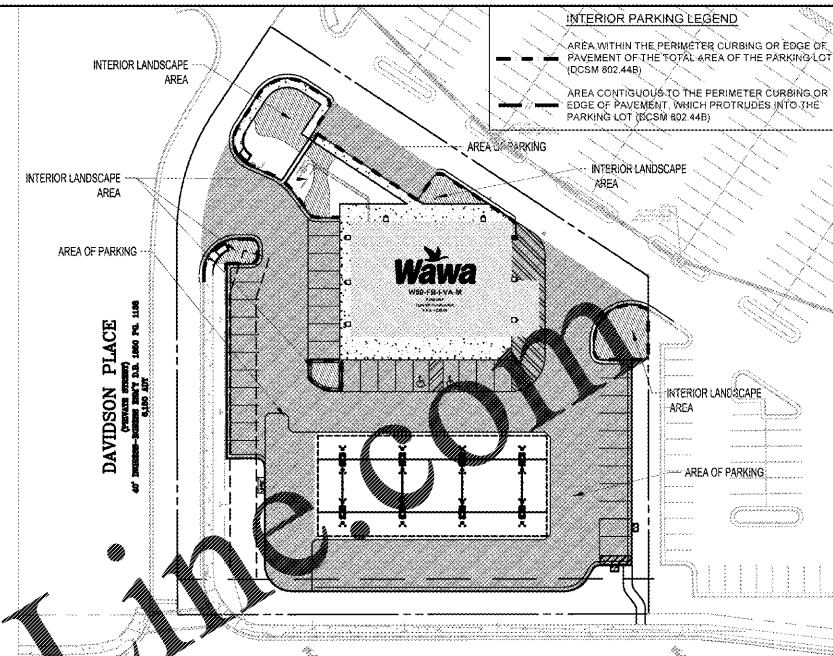
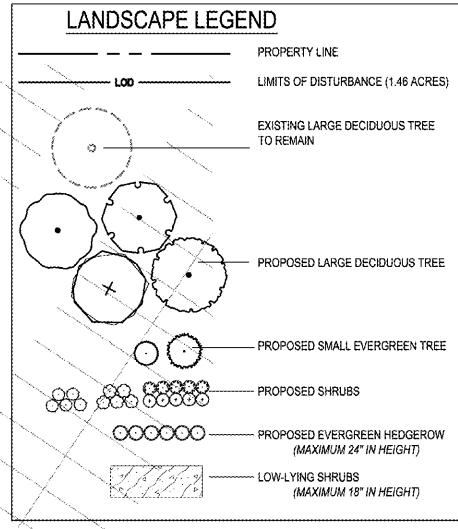
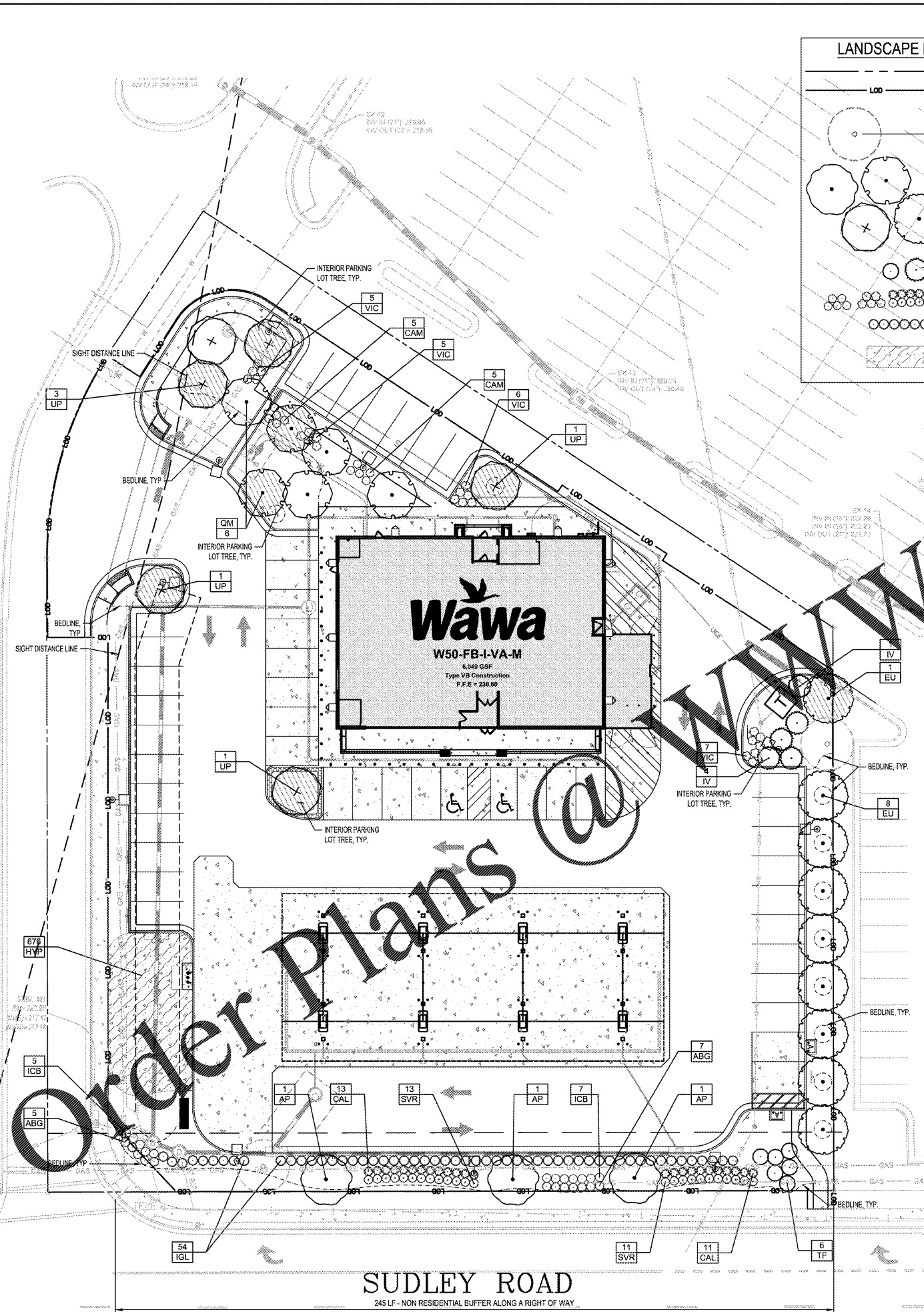


DAVIDSON PLACE
(PRIVATE STREET)
40' INGRESS-EGRESS ESM'T D.B. 1860 PG. 1138
6,150 ADT



SUDLEY ROAD
INTERIOR PARKING KEY PLAN
SCALE: 1" = 50'

SCHEDULE B - NONRESIDENTIAL LANDSCAPING ALONG RIGHT OF WAY (DCSM 802.42)

LINEAR FEET ALONG FRONTAGE: 245 LF
(80 Plant Units per 100 LF)

PLANT UNITS	REQUIRED		PROVIDED	
	QTY	PLANT UNITS	QTY	PLANT UNITS
Existing Large Deciduous Trees	2	10	2	20
Proposed Deciduous Tree	3	10	3	30
Proposed Shrubs	126	2	126	252
Total Plant Units Provided:				302

SCHEDULE C - PARKING LOT INTERIOR PLANTING

AREA OF PARKING: 31,085 SF

INTERIOR LANDSCAPE AREA (SF and %)	REQUIRED		PROVIDED	
	QTY	PLANT UNITS	QTY	PLANT UNITS
LARGE/MEDIUM TREES	8	5%	8	9.55%

PROPOSED LANDSCAPE MATERIAL BREAKDOWN

Proposed Large Deciduous Trees	QTY
Proposed Large Deciduous Trees	8

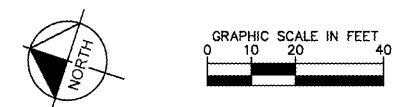
SCHEDULE D - TREE COVER CALCULATIONS

TOTAL SITE AREA: 72,745 SF

TREE COVER CANOPY (SF and %)	REQUIRED		PROVIDED	
	QTY	PLANT UNITS	QTY	PLANT UNITS
Existing Large Deciduous Trees	2	250	2	500 SF
Proposed Large Deciduous Trees	24	250	24	6,000 SF
Proposed Compact Evergreen Trees	11	75	11	825 SF
Total Canopy Provided:				7,325 SF

PLANT SCHEDULE

EVERGREEN TREES	QTY	BOTANICAL NAME	COMMON NAME	CONT	CALIPER	HEIGHT	REMARKS
IV	5	Ilex vomitoria	Yaupon Holly	B & B	3" Cal	6' HT MIN.	
TF	6	Taxus baccata 'Fastigata'	Fastiga English Yew	B & B	3" Cal	6' HT MIN.	
LARGE DECIDUOUS TREES	QTY	BOTANICAL NAME	COMMON NAME	CONT	CALIPER	HEIGHT	REMARKS
AP	3	Acer pseudoplatanus	Sycamore Maple	B & B	3" Cal	24' HT MIN.	
EU	9	Eucommia ulmoides	Hardy Rubber Tree	B & B	3" Cal	24' HT MIN.	
QM	6	Quercus michauxii	Swamp Chestnut Oak	B & B	3" Cal	24' HT MIN.	
UP	6	Ulmus americana 'Princeton'	American Elm	B & B	3" Cal	24' HT MIN.	
SHRUBS	QTY	BOTANICAL NAME	COMMON NAME	CONT	HEIGHT	REMARKS	
ABG	12	Abelia x grandiflora 'Sunshine Daydream'	Variegated Abelia	Cont.	24" HT MIN.		
CAM	10	Callicarpa americana	American Beautyberry	Cont.	24" HT MIN.		
CAL	24	Clethra alnifolia	Summersweet Clethra	Cont.	24" HT MIN.		
ICB	12	Ilex cornuta 'Burfordii Nana'	Dwarf Burford Holly	Cont.	24" HT MIN.		
IGL	54	Ilex glabra	Inkberry Holly	Cont.	24" HT MIN.		
SVR	24	Spirea x vanhouttei 'Renaissance'	Vanhouttei Spirea	Cont.	24" HT MIN.		
VIC	23	Viburnum carlesii	Korean Spice Viburnum	Cont.	24" HT MIN.		
GROUND COVERS	QTY	BOTANICAL NAME	COMMON NAME	CONT	SPACING	REMARKS	
HYP	670	Hypericum calycinum	Creeping St. John's Wort	1 gal	18" o.c.		



Kimley»Horn
© 2018 KIMLEY-HORN AND ASSOCIATES, INC.
11400 COMMERCE PARK DR., SUITE 400, RESTON, VA 20191
PHONE: 703-674-1300 FAX: 703-674-1300
WWW.KIMLEY-HORN.COM

COMMONWEALTH OF VIRGINIA
W. Davis Walker
Lic. No. 0406001891
01/08/2019
LANDSCAPE ARCHITECT

KHA PROJECT: 110499001
DATE: 02/06/2019
SCALE: AS SHOWN
DESIGNED BY: WDW
DRAWN BY: WDW
CHECKED BY: WDW

LANDSCAPE PLAN

WAWA - SUDLEY ROAD
PREPARED FOR FRONTIER DEVELOPMENT
PRINCE WILLIAM COUNTY, VA

SHEET NUMBER: C-600

NO.	DATE	REVISIONS	BY
1	09/10/2018	PWC COMMENTS - 1ST ROUND	
2	11/02/2018	PWC COMMENTS - 2ND ROUND	
3	02/06/2019	PWC COMMENTS - SIGNATURE SET	
4	07/23/2019	UTILITY REVISIONS	