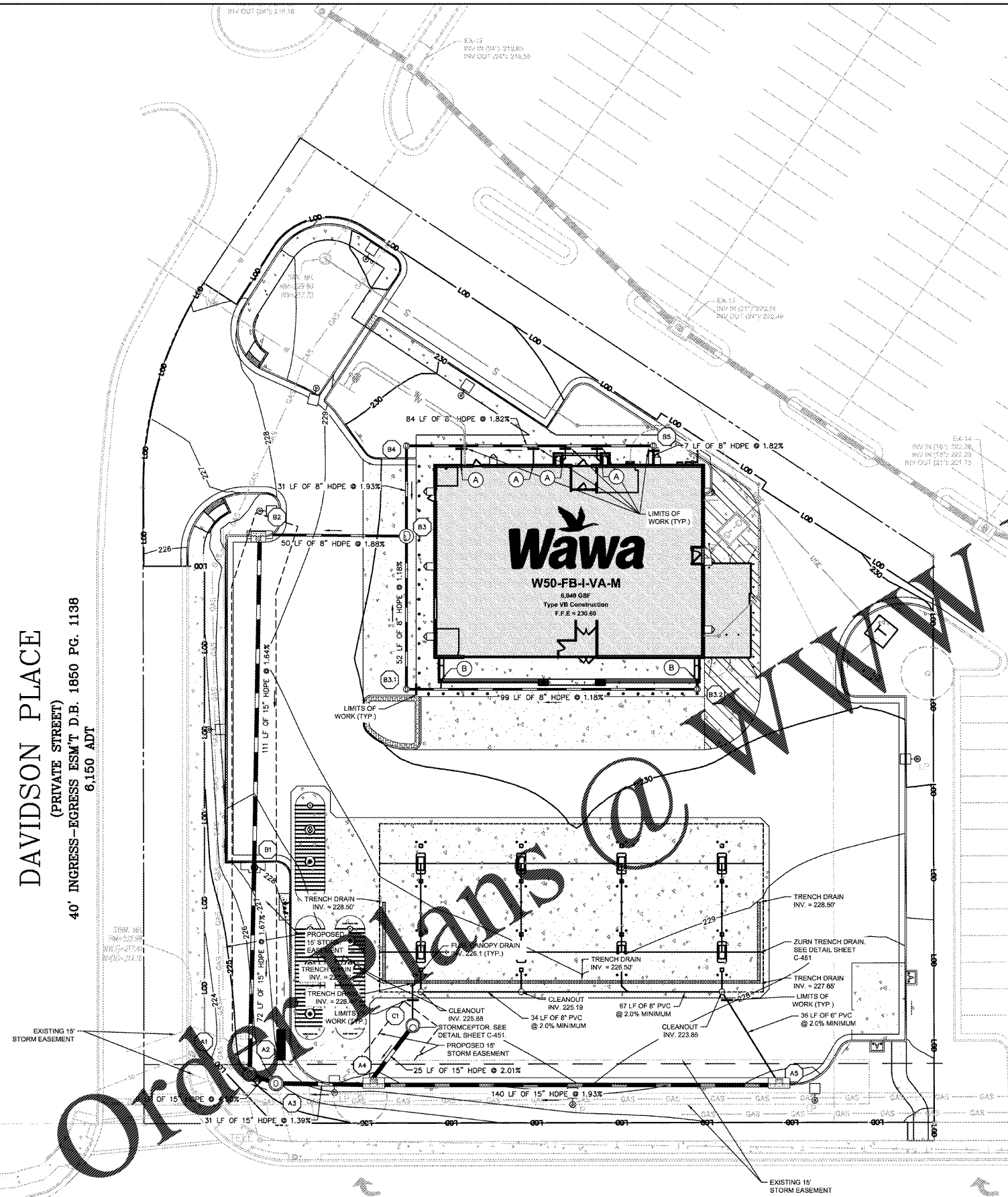


DAVIDSON PLACE
(PRIVATE STREET)
40' INGRESS-EGRESS ESM'T D.B. 1850 PG. 1138
6,150 ADT



LEGEND

	PROPERTY LINE/LEGAL ROW
	PROPERTY SETBACK
	LIMITS OF DISTURBANCE (1.46 AC)
	EXISTING STORM PIPE
	EXISTING STORM STRUCTURE
	PROPOSED HDPE STORM PIPE
	PROPOSED PVC STORM PIPE
	PROPOSED STORM STRUCTURE

- NOTES**
- REFERENCE SHEET C-450 AND C-451 FOR DRAINAGE DETAILS.
 - VDOT INLET SHAPING IS-1 SHALL BE INSTALLED ON ALL PROPOSED MANHOLES AND INLETS.

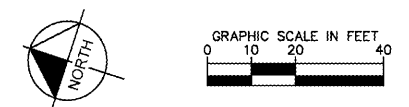
BUILDING ROOF CONNECTIONS LEGEND

	6" HDPE, INV = 228.00, MIN SLOPE = 1%, CONNECT TO 8" HDPE PIPE WITH INSERTA-TEE
	PVC, INV = 228.00, MIN SLOPE = 1%, CONNECT TO 8" HDPE PIPE WITH INSERTA-TEE

STRUCTURE TABLE

STRUCTURE NAME:	DETAILS:	PIPES IN:	PIPES OUT:
A1	EX CURB INLET RIM: 223.09 INV IN: 217.41 INV OUT: 217.16	FROM A2, 15" RCP INV IN: 217.41 @ 4.90%	TO EX-2, 18" RCP INV OUT: 217.16 @ 2.58%
A2	MH, IS-1 RIM: 225.10 INV IN: 218.43 INV IN: 218.43 INV OUT: 218.43	FROM A3, 15" HDPE INV IN: 218.43 @ 4.90% FROM B1, 15" HDPE INV IN: 220.98 @ 1.67%	TO A1, 15" RCP INV OUT: 218.43 @ 4.90%
A3	MH, IS-1 RIM: 225.84 INV IN: 219.75 INV OUT: 218.89	FROM A4, 15" HDPE INV IN: 219.75 @ 1.39%	TO A2, 15" HDPE INV OUT: 218.89 @ 4.90%
A4	DI-2C, 8" THROAT, IS-1 RIM: 227.32 INV IN: 220.28 INV IN: 221.00 INV OUT: 220.18	FROM A5, 15" HDPE INV IN: 220.28 @ 1.93% FROM C1, 15" HDPE INV IN: 221.00 @ 2.01%	TO A3, 15" HDPE INV OUT: 220.18 @ 1.39%
A5	DI-2C, 8" THROAT, IS-1 RIM: 227.25 INV OUT: 223.00		TO A4, 15" HDPE INV OUT: 223.00 @ 1.93%
B1	DI-3C, 6" THROAT, IS-1 RIM: 228.05 INV IN: 222.18 INV OUT: 222.18	FROM B2, 15" HDPE INV IN: 222.18 @ 1.64%	TO A2, 15" HDPE INV OUT: 222.18 @ 1.67%
B2	DI-2B, 4" THROAT, IS-1 RIM: 228.74 INV IN: 224.58 INV OUT: 224.00	FROM B3, 8" HDPE INV IN: 224.58 @ 1.88%	TO B1, 15" HDPE INV OUT: 224.00 @ 1.64%
B3	MH, IS-1 RIM: 230.38 INV IN: 225.69 INV IN: 225.52 INV OUT: 225.52	FROM B3.1, 8" HDPE INV IN: 225.69 @ 1.18% FROM B4, 8" HDPE INV IN: 225.52 @ 1.93%	TO B2, 8" HDPE INV OUT: 225.52 @ 1.88%
B3.1	24" DIA NYLOPLAST SOLID COVER RIM: 230.38 INV IN: 226.30 INV OUT: 226.30	FROM B3.2, 8" HDPE INV IN: 226.30 @ 1.18%	TO B3, 8" HDPE INV OUT: 226.30 @ 1.18%
B3.2	24" DIA NYLOPLAST SOLID COVER RIM: 230.44 INV IN: 227.46 INV OUT: 227.46	FROM , 8" HDPE INV IN: 227.46 @ 1.18%	TO B3.1, 8" HDPE INV OUT: 227.46 @ 1.18%
B4	24" DIA NYLOPLAST SOLID COVER RIM: 230.59 INV IN: 226.11 INV OUT: 226.11	FROM B5, 8" HDPE INV IN: 226.11 @ 1.82%	TO B3, 8" HDPE INV OUT: 226.11 @ 1.93%
B5	24" DIA NYLOPLAST SOLID COVER RIM: 230.59 INV IN: 227.63 INV OUT: 227.63	FROM , 8" HDPE INV IN: 227.63 @ 1.82%	TO B4, 8" HDPE INV OUT: 227.63 @ 1.82%
C1	OIL WATER SEPARATOR RIM: 227.66 INV OUT: 221.50		TO A4, 15" HDPE INV OUT: 221.50 @ 2.01%
EX-2	EX CURB INLET RIM: 222.75 INV IN: 216.25	FROM A1, 18" RCP INV IN: 216.25 @ 2.58%	

SUDLEY ROAD
(R/W VARIES)
POSTED SPEED: 45 MPH, DESIGN SPEED: 45 MPH
URBAN MINOR ARTERIAL
22,000 ADT



Kimley»Horn
© 2018 KIMLEY-HORN AND ASSOCIATES, INC.
11400 COMMERCE PARK DR., SUITE 400, RESTON, VA 20191
PHONE: 703-674-1300 FAX: 703-674-1350
WWW.KIMLEY-HORN.COM

COMMONWEALTH OF VIRGINIA
ROSS STEVENS
Lic. No. 047498
02/06/2019

KHA PROJECT: 110499001
DATE: 02/06/2019
SCALE: AS SHOWN
DESIGNED BY: CAH
DRAWN BY: CAH
CHECKED BY: RSS

WAWA - SUDLEY ROAD
PREPARED FOR:
FRONTIER DEVELOPMENT VA

DRAINAGE PLAN

SHEET NUMBER
C-400

NO.	REVISIONS	DATE	BY
1	PVC COMMENTS - 1ST ROUND	09/10/2018	CAH
2	PVC COMMENTS - 2ND ROUND	11/02/2018	CAH
3	PVC COMMENTS - SIGNATURE SET	02/06/2019	CAH
4	UTILITY REVISIONS	07/23/2019	CAH