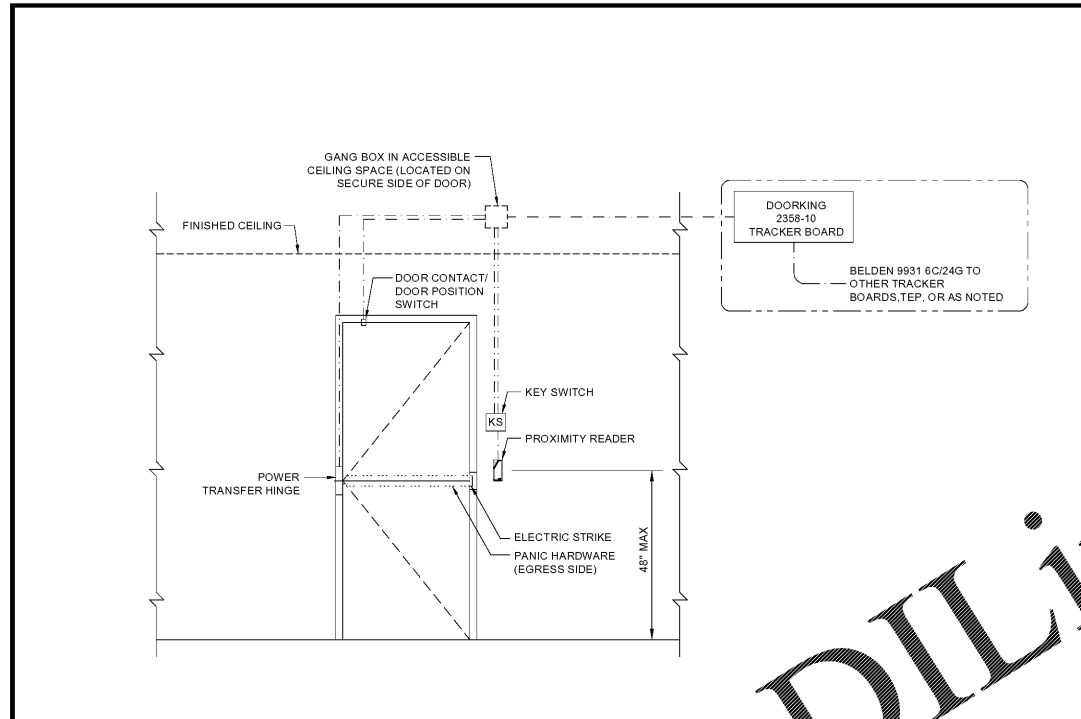
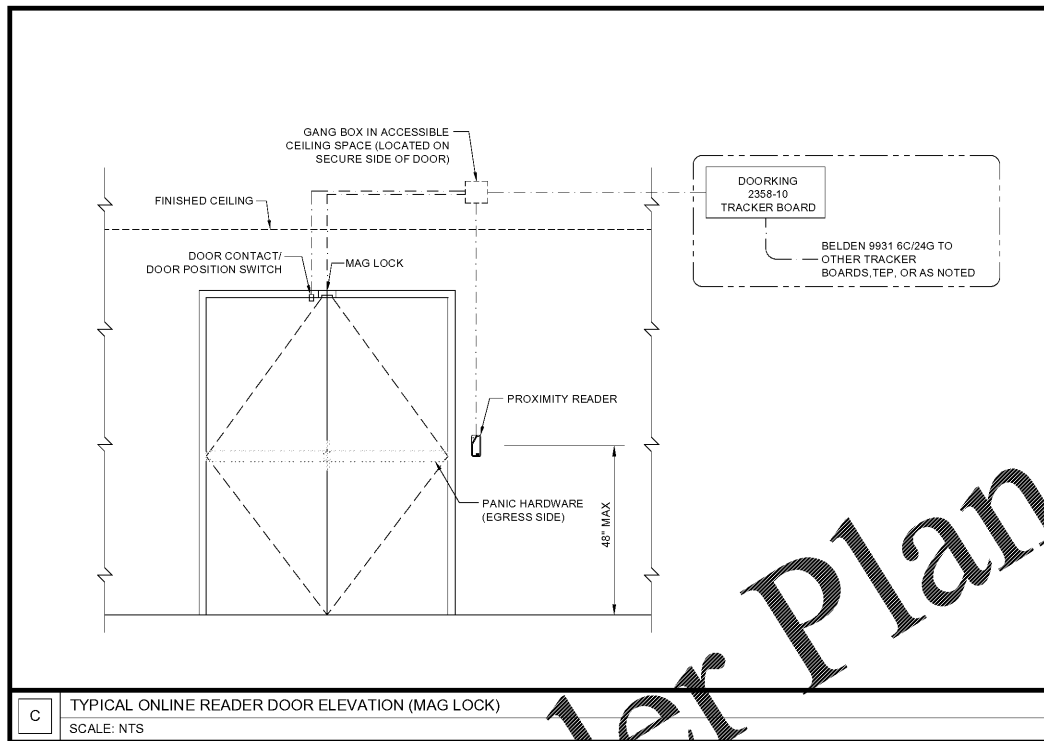


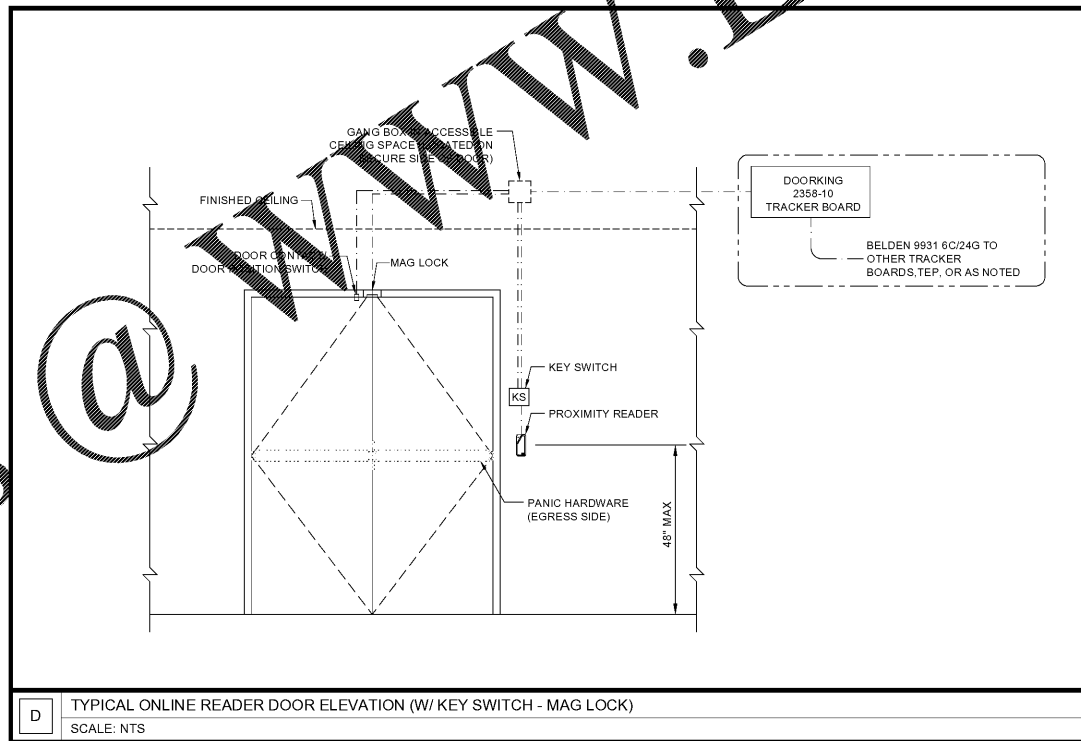
A TYPICAL ONLINE READER DOOR ELEVATION (ELEC. STRIKE)
SCALE: NTS



B TYPICAL ONLINE READER DOOR ELEVATION (W/ KEY SWITCH - ELEC. STRIKE)
SCALE: NTS



C TYPICAL ONLINE READER DOOR ELEVATION (MAG LOCK)
SCALE: NTS



D TYPICAL ONLINE READER DOOR ELEVATION (W/ KEY SWITCH - MAG LOCK)
SCALE: NTS

CABLE SPECIFICATIONS

MAXIMUM DISTANCE	CABLE TYPE
AC Power Transformer Cabling	
100 Feet	2c #16 AWG
200 Feet	2c #14 AWG
Tracker Board and Elevator Control Cabling	
500 Feet (Total)	Belden 9931 - 6c #24AWG Shielded cable or Consolidated 5-6c #24AWG Shielded cable
Weigand Reader Cabling	
500 Feet	Belden 9931FE - 4c #24AWG Shielded cable shielded distance and lighted readers Belden 9931 - 6c #24AWG Shielded cable or Consolidated 5-6c #24AWG Shielded cable
Door Cabling	
800 Feet	Category 6 cable
1600 Feet	1pr #22 AWG (twisted)
Over 1600 Feet	Use Optical Fiber and Media Converters Contact InfiniSys for details.
Door Strike Cabling (see Manufacturers' Specifications)	
100 Feet	2c #16 AWG
Over 100 Feet	2c #14 AWG
Over 1600 Feet	Not Recommended

INFINISYS
MULTIFAMILY TECHNOLOGY
 1825 Business Park Blvd, Suite 204
 Daytona Beach, FL 32114 USA
 386.236.1500
 E-Mail: info@infisys.com
 NOTES: This drawing is the property of INFINISYS. All information that is not generally known shall be confidential except to the extent the information has been previously established. This drawing may not be reproduced, copied, or used as the basis for manufacture or sale without written permission. This design is an architectural CAD drawing provided by charlan brock associates for this project and are used with their permission.
 Copyright 2019 InfiniSys. All rights reserved.

Lyric at Norton Commons
 Prospect, Kentucky
 Bristol Development Group
 381 Mallory Station Rd, Suite 204
 Franklin, TN 37067

charlan • brock
associates
 architects • planners
 1770 fennell street
 maitland florida 32751 7208
 407.660.8900 f:407.875.9948
 www.cbaarchitects.com

LOW VOLTAGE
 THIRD FLOOR
 PLAN

date: 01-11-2019
 job no: 3789.15
 drawn by: G.UBIENSKI
 reviewed by: T.STENDER
 issue history:
 Δ Date

Order Plans

WWW.IDIline.com