


Common North, Prospect, KY



Architect Name
Charlan Brock & Associates, A/C000798

INFINISYS
MULTIFAMILY TECHNOLOGY

1825 Business Park Blvd, Suite C
Daytona Beach, FL 32114 USA
386.235.1500
E-Mail: cag@infm.com

NOTES: This drawing is the property of INFINISYS. All information that is not generally known shall be confidential except to the extent the information has been previously established. This drawing may not be reproduced, copied, or used as the basis for manufacture or sale without written permission. This design uses architectural CAD drawings provided by charlan brock associates for this project and are used with their permission.
Copyright 2019 InfnSys. All rights reserved.

Lyric at Norton Commons
Prospect, Kentucky

Bristol Development Group
381 MacIlroy Station Rd, Suite 204
Franklin, TN 37067

c b a
charlan • brock
associates

architects • planners

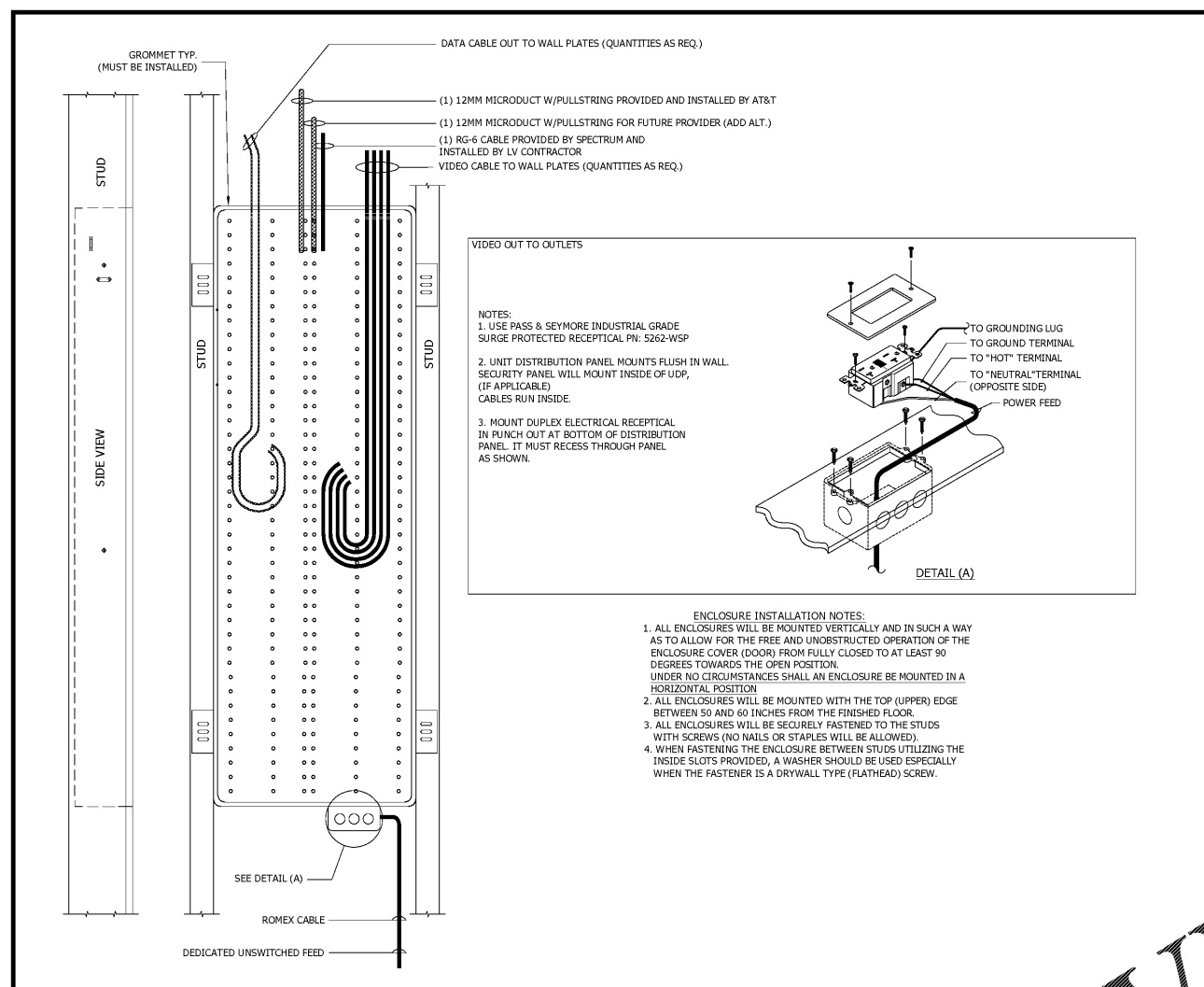
1770 fennell street
mafland florida 32751-7208
407.660.8900 | f:407.875.9948
www.cbaarchitects.com

LOW VOLTAGE
AMENITY PLANS

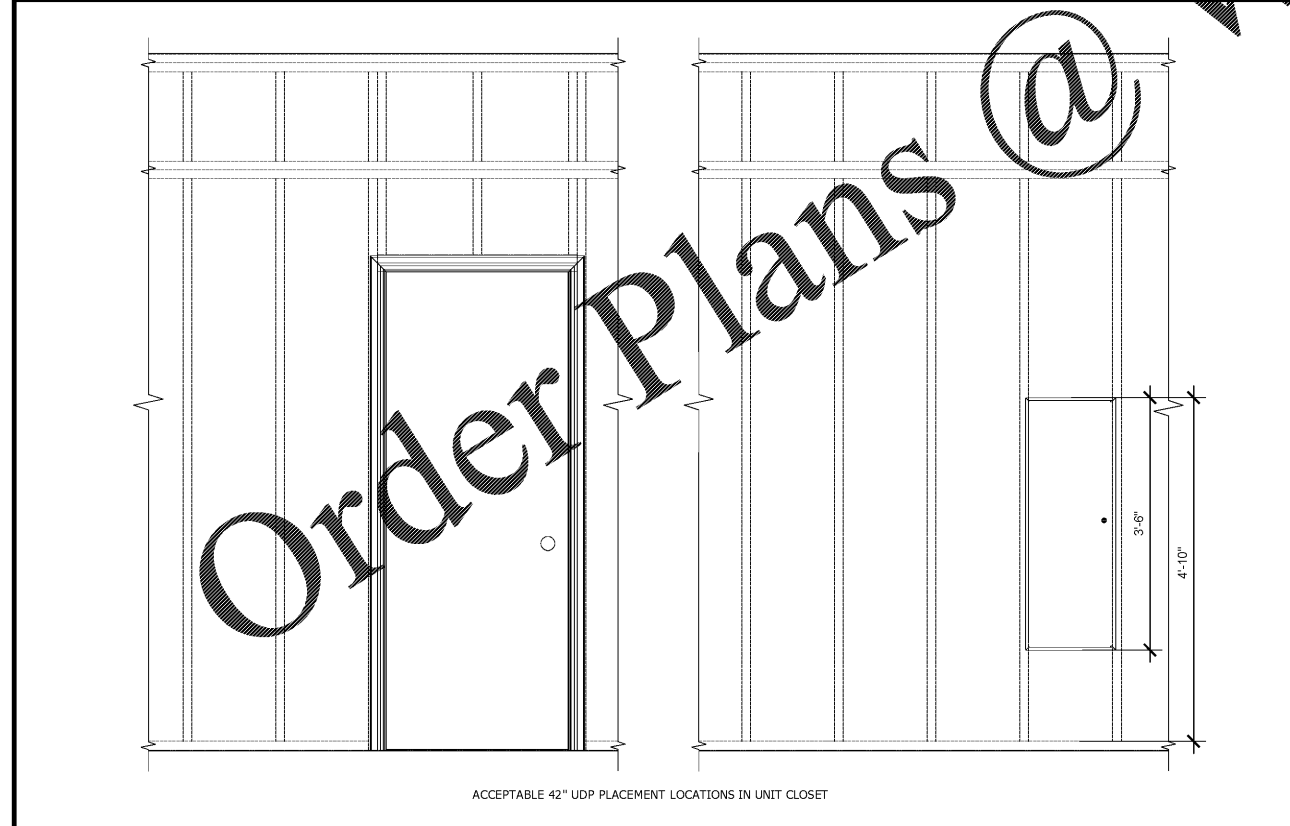
date: 01-11-2019
job no: 3789.15
drawn by: G.UBIENSKI
reviewed by: T.STENDER
issue history:
Δ Date

SCHEMATIC SET

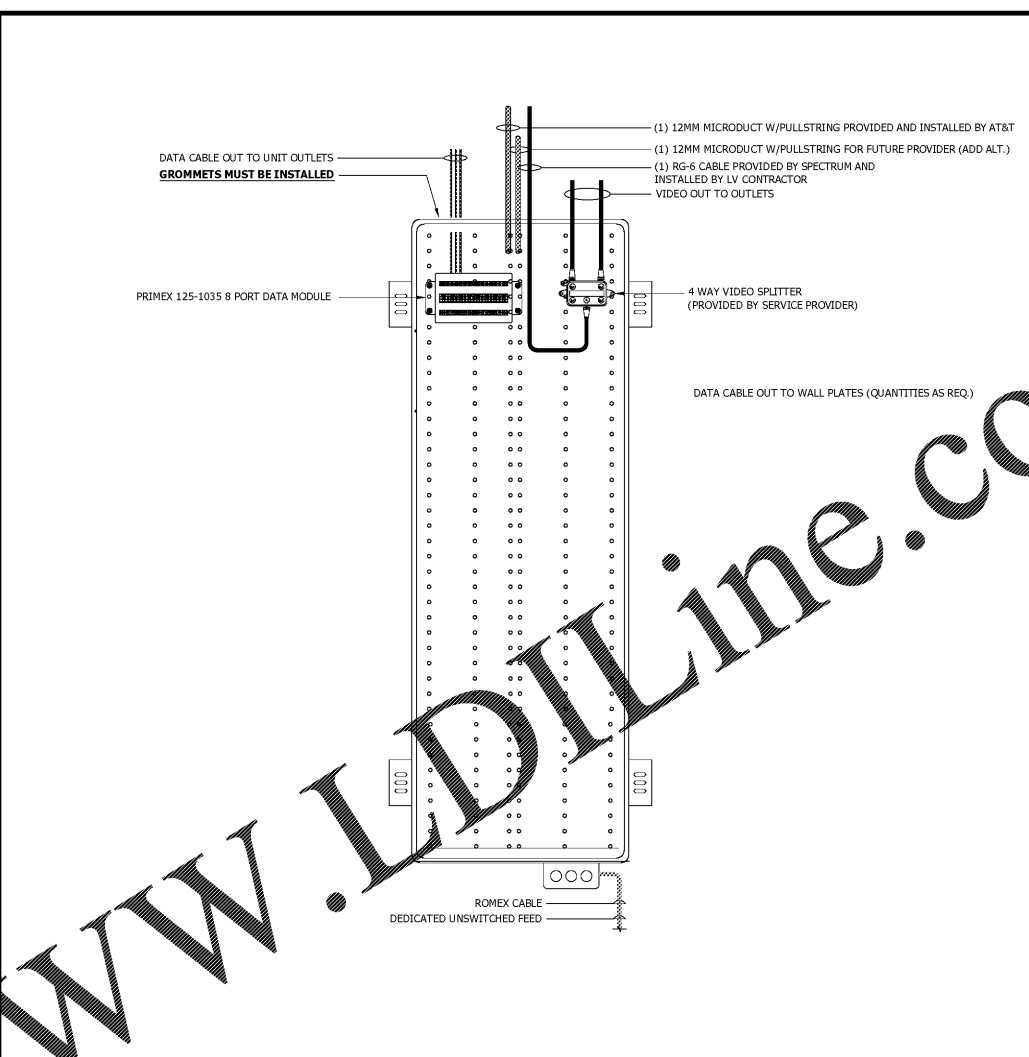
T-112



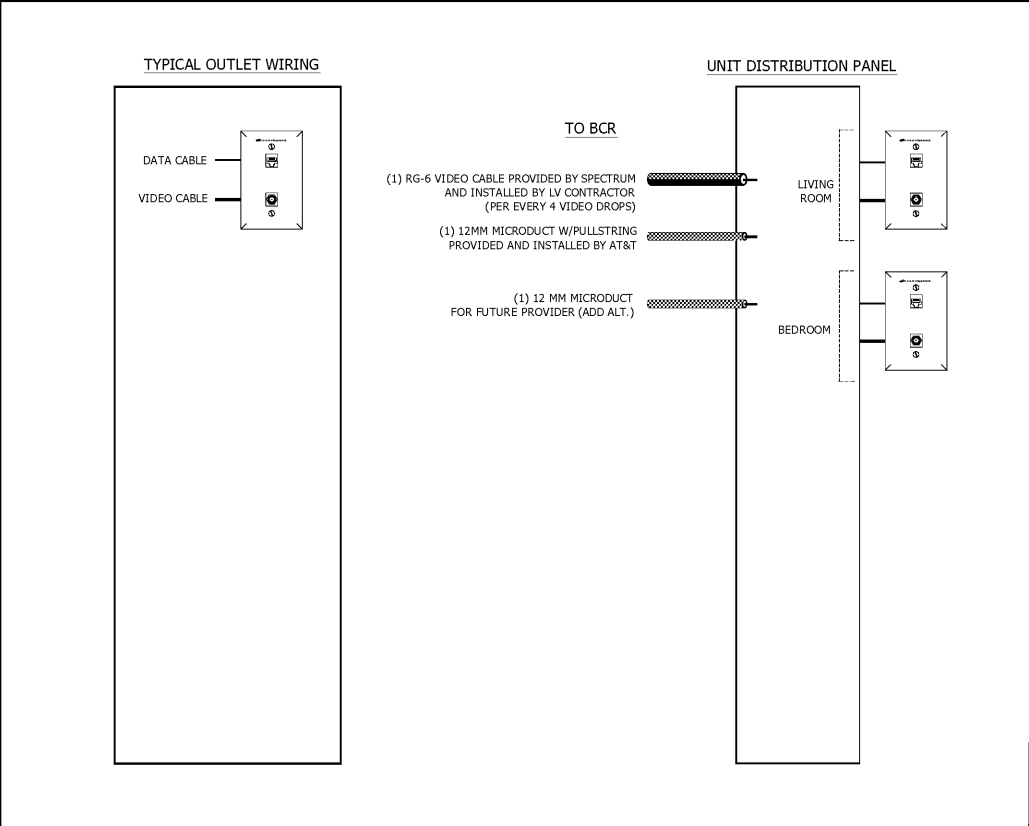
1 UDP ROUGH-IN (42" COMPOSITE PRIMEX ENCLOSURE)



3 42" UDP PLACEMENT LOCATIONS IN CLOSETS



2 UDP TRIM OUT (42" COMPOSITE PRIMEX ENCLOSURE)



4 UNIT BLOCK DIAGRAM

WWW.IDILine.com

Order Plans @