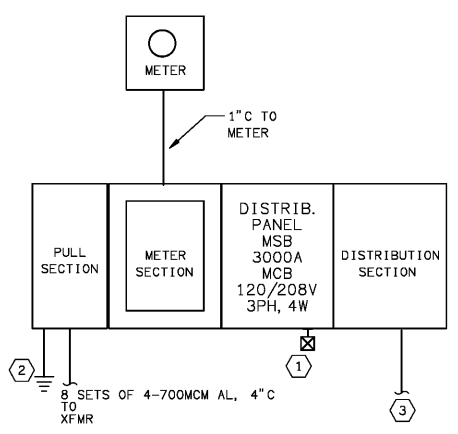
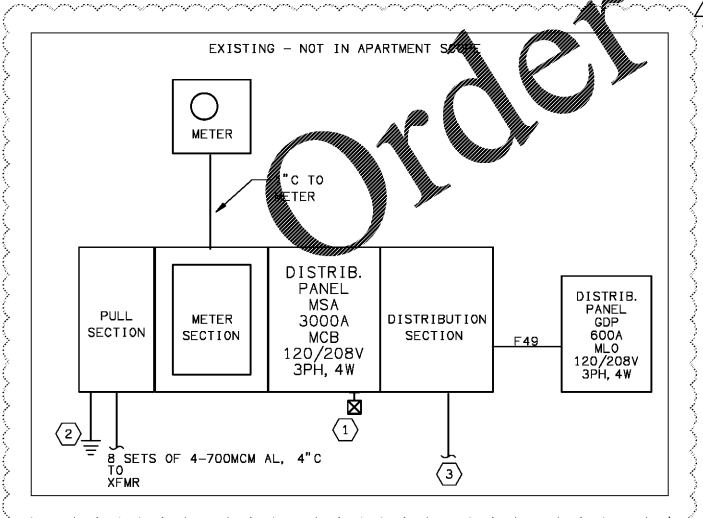
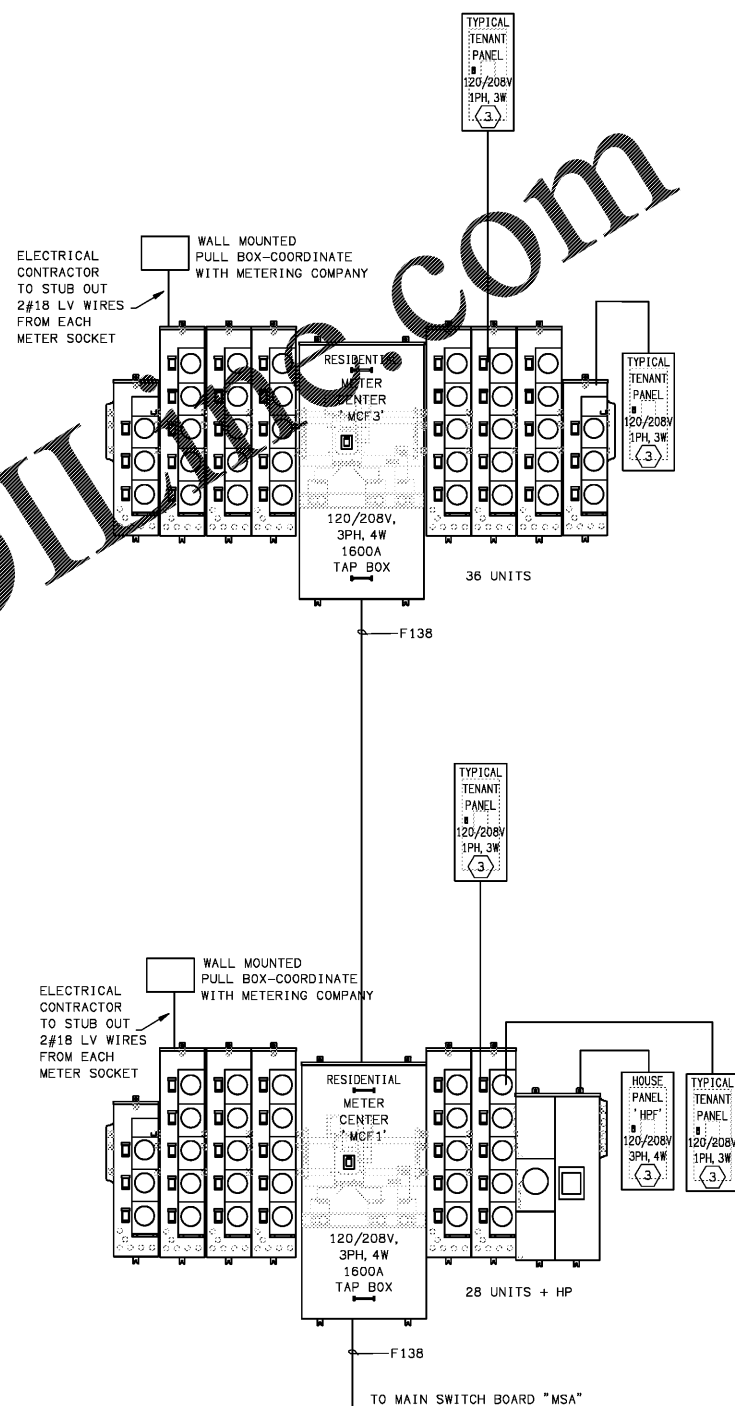
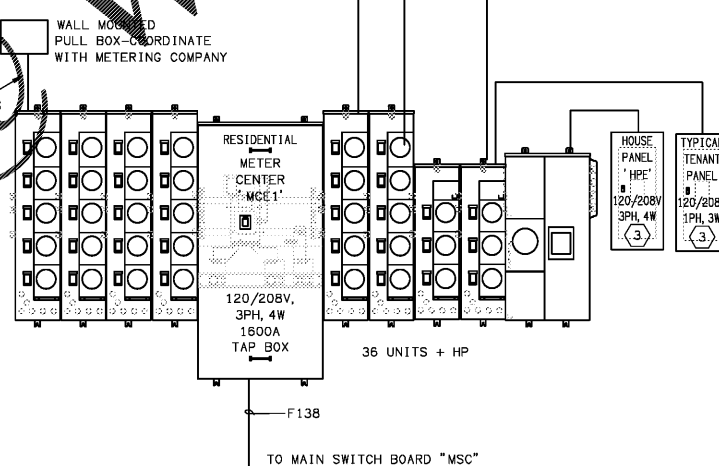
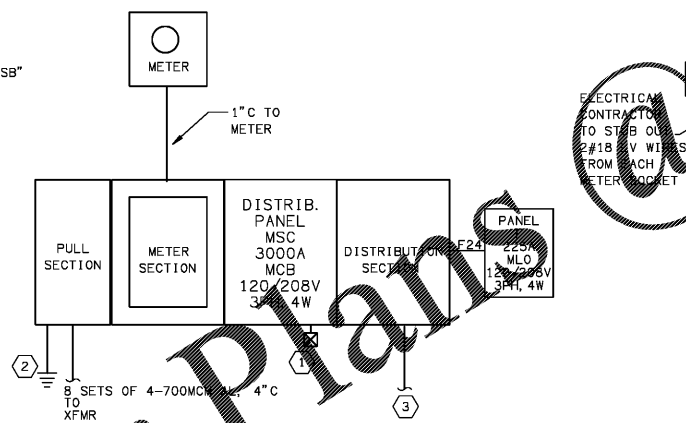


PROVIDE REQUIRED SIGNAGE AT THE SERVICE STATING THE MAXIMUM AVAILABLE FAULT CURRENT AND THE DATE THE CALCULATION WAS PERFORMED PER NEC 110.24.

PROVIDE SIGNAGE IDENTIFYING LOCATION OF ALL SERVICES SUPPLYING THIS BUILDING PER NEC 230.2(E).

SIGNAGE SHALL BE ENGRAVED, LAMINATED ACRYLIC OR MELAMINE LABEL, PUNCHED OR DRILLED FOR MECHANICAL FASTENERS WITH WHITE LETTERS ON A BLACK BACKGROUND MINIMUM 1/16 INCH THICK. MINIMUM LETTER HEIGHT SHALL BE 1/2 INCH. ATTACH INSTRUCTIONAL SIGNAGE WITH MECHANICAL FASTENERS APPROPRIATE TO THE LOCATION AND SUBSTRATE.



- ELECTRICAL SHEET NOTES**
- LIGHTNING ARRESTER. INSTALL PER MANUFACTURERS RECOMMENDATIONS. (BASIS OF DESIGN - EATON SPD SERIES)
 - PROVIDE GROUNDING ELECTRODE AND CONDUCTOR PER GROUNDING DETAIL ON THIS SHEET. BOND ALL SERVICES TOGETHER WITH #3/D.
 - ROUTE FUTURE RETAIL CONDUITS TOWARDS FUTURE RETAIL SHOPS.