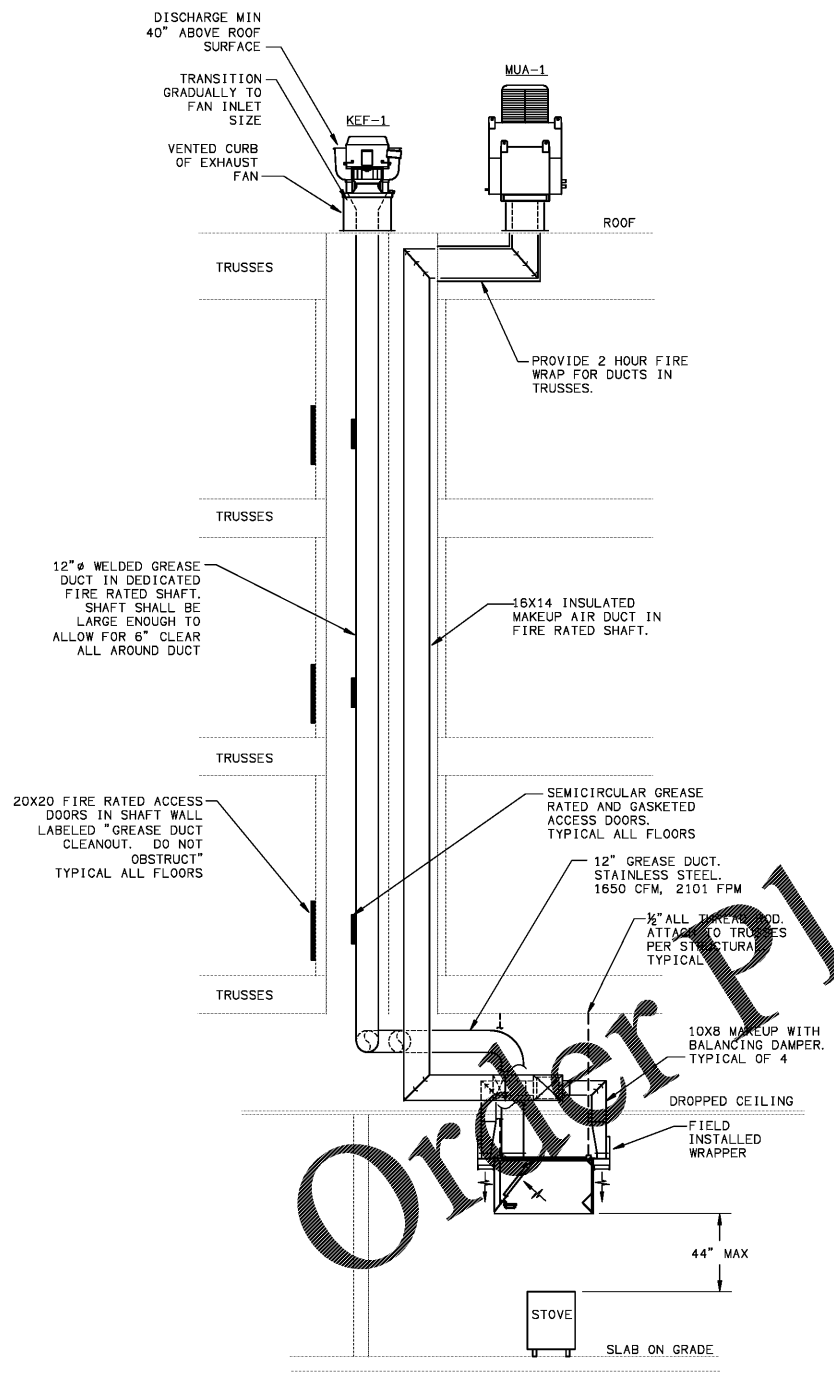
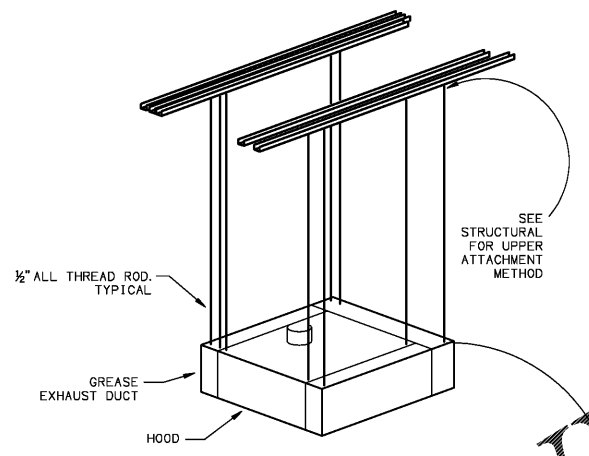


KITCHEN AIR BALANCE:	
AHU-1 OUTSIDE AIR:	+190 CFM
KITCHEN HOOD EXHAUST:	-1650 CFM
TEMPERED KITCHEN HOOD MAKEUP:	+1400 CFM
NET:	-60 CFM

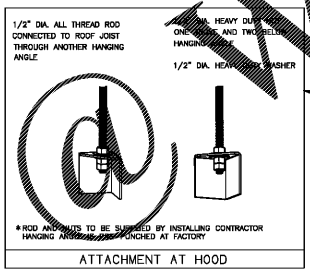
- KITCHEN SPECIFIC NOTES:
- PROVIDE AN INDEPENDENT TEST AND BALANCE REPORT FOR THE COOKING AREA BEFORE CO PER 507.6 OF THE IMC.
 - PROVIDE CAPTURE AND CONTAINMENT TEST BEFORE CO PER 507.6.1 OF THE IMC. PERFORM THIS TEST UNDER WITNESS OF THE BUILDING OFFICIAL. THIS WILL BE A VISUAL VERIFICATION OF THE PATH OF SMOKE AND VAPORS WITH THE COOKING EQUIPMENT UNDER THE HOOD AT OPERATING TEMPERATURE.
 - PROVIDE HOOD MAKEUP AIR DUCTS AS EXTERNALLY INSULATED GALV STEEL. R-VALUE OF 4



B KITCHEN HOOD SECTION VIEW
SCALE: N. T. S.

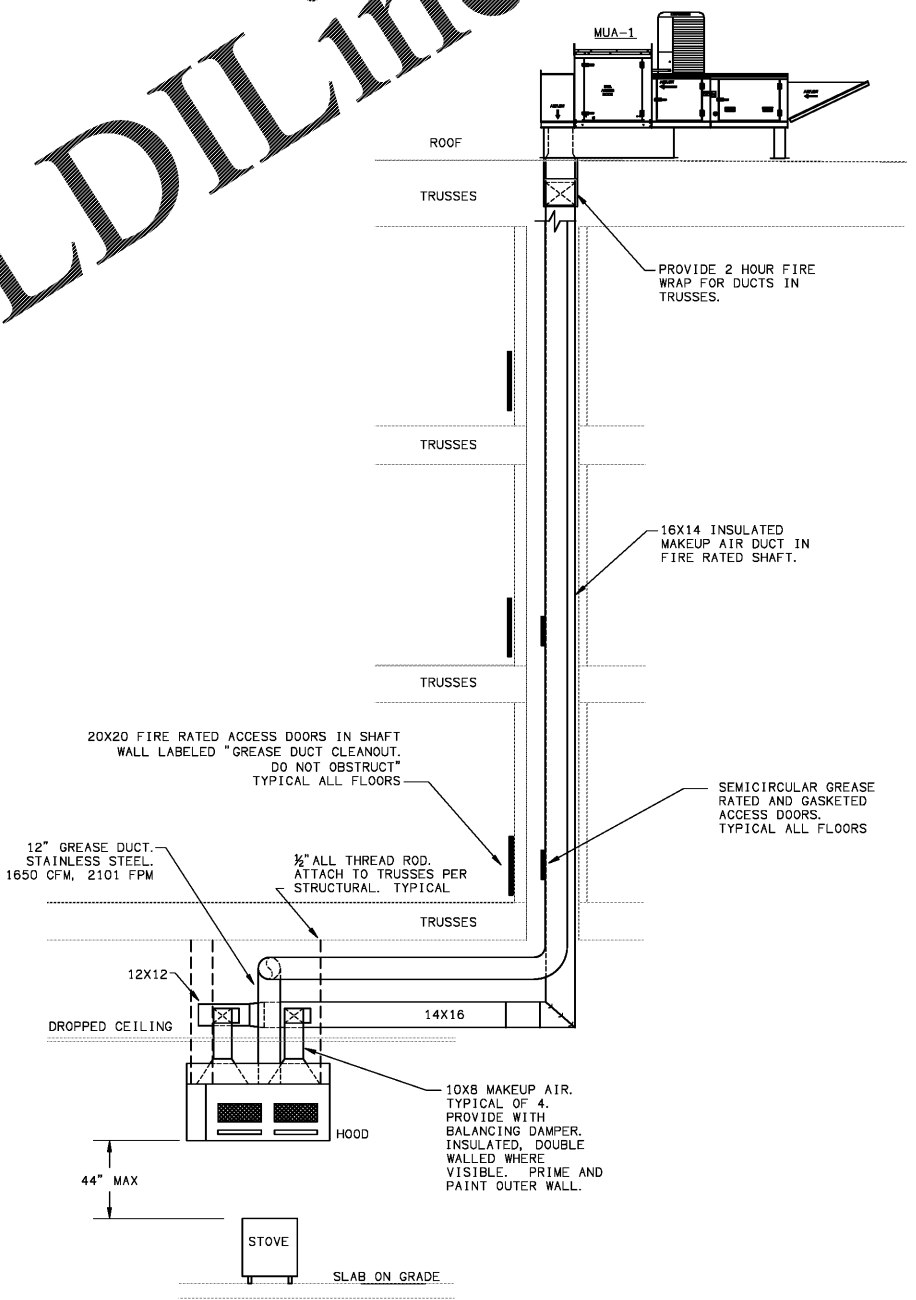


HOOD HANGING DETAIL
SCALE: N. T. S.

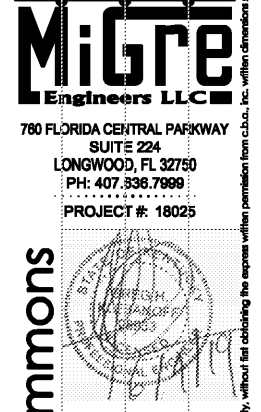


REQUIREMENTS FOR GREASE DUCT

- CONSTRUCT DUCTS OF CARBON STEEL NOT LESS THAN 16 GA. IN THICKNESS OR STAINLESS STEEL NOT LESS THAN 18 GA. IN THICKNESS. SS REQUIRED WHERE VISIBLE.
- ALL SEAMS, JOINTS, PENETRATIONS, AND DUCT TO HOOD COLLAR CONNECTIONS SHALL HAVE A LIQUIDTIGHT CONTINUOUS EXTERNAL WELD, UNLESS THE EXCEPTIONS IN 506.3.2. OF THE IMC ARE ADHERED TO.
- USE OVERLAPPING DUCT CONNECTIONS OF EITHER THE TELESCOPING OR THE BELL TYPE FOR WELDED FIELD JOINTS. NOT BUTT-WELD CONNECTIONS. THE INSIDE SECTION SHALL ALWAYS BE UPHILL OF THE OUTSIDE DUCT SECTION. THE DIFFERENCE BETWEEN INSIDE DIMENSION OF OVERLAPPING SECTIONS SHALL NOT EXCEED 0.25 IN. THE OVERLAP SHALL NOT EXCEED 2 IN.
- TAKE MEASURES TO PREVENT PHYSICAL DAMAGE TO ANY MATERIAL OR PRODUCT USED FOR THE PURPOSE OF REDUCING CLEARANCES.
- INSTALL GREASE DUCT WITHOUT FORMING DIPS OR TRAPS AND USE RADIUS TURNS WITHOUT VANES OR FASTENERS IN AIR STREAM.
- SLOPE HORIZONTAL PART OF DUCT DOWN AT NOT LESS THAN 0.25\" PER FOOT TOWARD THE HOOD.
- FOR DUCTS THAT SLOPE LESS THAN 45\" TO THE HORIZONTAL, PROVIDE CLEANOUT OPENINGS AT THE SIDES OR AT THE TOP OR BOTTOM OF THE DUCT, WHICHEVER IS MORE ACCESSIBLE, AND AT CHANGES OF DIRECTION, AND AT INTERVALS OF NO MORE THAN 20 FEET. SIDE MOUNTED OPENINGS SHALL BE NOT LESS THAN 1.5 INCHES FROM THE BOTTOM OF THE DUCT, AND NOT LESS THAN 1\" FROM THE TOP OF THE DUCT. MINIMUM SIZE 12X12. IF THAT SIZE CANNOT BE ACHIEVED, THEN THE OPENING CAN BE AT THE TOP OR BOTTOM OF THE DUCT. IF AT THE TOP OR BOTTOM, OPENING SHALL BE NOT LESS THAN 1\" FROM THE EDGES OF THE DUCT. IF AT THE BOTTOM, THE OPENING SHALL HAVE A DAM. OPENINGS SHALL BE AT LEAST 1\" FROM WELDED SEAMS. ACCESS PANEL SHALL BE OF THE SAME MATERIAL AND THICKNESS AS THE DUCT AND SHALL HAVE A GASKET OR SEALANT THAT IS RATED FOR 1500 F AND SHALL BE GREASETIGHT. PLACE A SIGN ON ALL GREASE ACCESS PANELS STATING THE FOLLOWING: "ACCESS PANEL-DO NOT OBSTRUCT" IN LETTERS AT LEAST 1 INCH HIGH.
- MAINTAIN CLEARANCE OF 18 INCHES TO COMBUSTIBLE MATERIAL AND 3 INCHES TO LIMITED COMBUSTIBLE MATERIAL, AND 6\" FROM SHAFT WALLS.
- FOR HOODS WITH DAMPERS ON THE EXHAUST OR SUPPLY COLLAR, PROVIDE AN ACCESS PANEL IN THE DUCT FOR CLEANING AND INSPECTION, UNLESS SAID DAMPER CAN BE ACCESSED FROM THE HOOD SIDE.
- PROVIDE FLANGE AND GASKET AT CONNECTION TO GREASE FAN



A KITCHEN HOOD SECTION VIEW
SCALE: N. T. S.



Lyric at Norton Commons
 Prospect, Kentucky
 Bristol Development Group
 381 Mallory Station Rd, Suite 204
 Franklin, TN 37067

architects • planners
 1770 fennell street
 maitland florida 32751-7208
 407.660.8900 • 407.875.9948
 www.cbaarchitects.com

HVAC
 SCHEDULES
 AND DETAILS

date: 06-04-2019
 job no: 3789.15
 drawn by: GMK
 reviewed by: GMK
 file: 18025-H-SCHEDS
 issue history:

H6.10

charlan brock associates, inc. hereby certifies that the design, calculations, and other data shown on these drawings were prepared by a duly licensed professional engineer, architect, or other qualified person under the supervision and control of the professional engineer, architect, or other qualified person named on these drawings. The professional seal of the engineer, architect, or other qualified person is placed on these drawings in accordance with the applicable laws and regulations of the state of florida.