

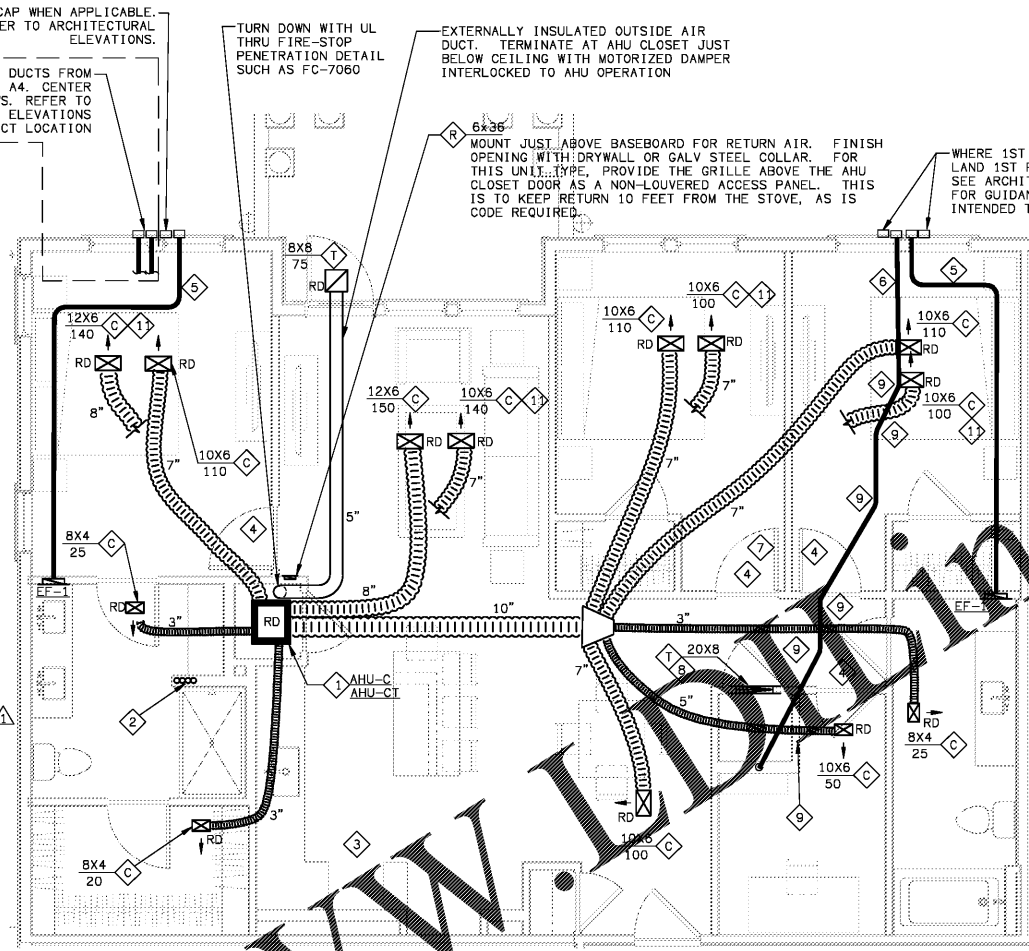
Order Plans @ www.lordline.com

MAX DRYER VENT LENGTH C1	
HORIZONTAL	27FT
VERTICAL	22FT
1 90° HARD ELBOW	1 IN FLEX

THIS DRYER VENT EXCEEDS 35 FEET CODE EQUIVALENT. THEREFORE, PROVIDE A DRYER SUCH AS THE MODEL SUGGESTED BELOW PRIOR TO OCCUPANCY WHICH IS CAPABLE OF VENTING THROUGH THE LENGTH INSTALLED, AND SUBMIT INSTALLATION INSTRUCTIONS TO THE CODE INSPECTOR PRIOR TO COVERING UP THE DRYER DUCT.

SUGGESTED DRYER: SEE SHEET H4.01 FOR 1ST FLOOR NON COURTYARD, AND H4.09 OTHERWISE

AIR FLOWS ARE INDICATED FOR THE LARGER AHU-CT. BALANCE EACH SUPPLY PROPORTIONALLY LOWER WHERE AHU-B IS USED.

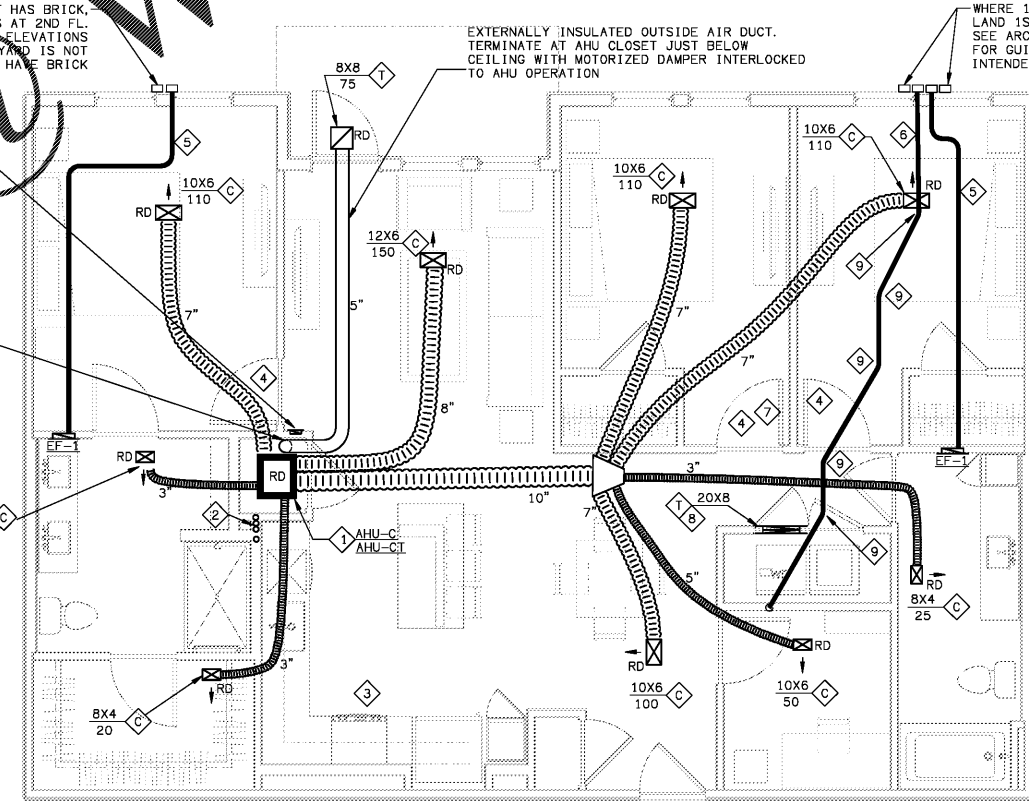


MAX DRYER VENT LENGTH C1-A	
HORIZONTAL	27FT
VERTICAL	22FT
1 90° HARD ELBOW	1 IN FLEX

THIS DRYER VENT EXCEEDS 35 FEET CODE EQUIVALENT. THEREFORE, PROVIDE A DRYER SUCH AS THE MODEL SUGGESTED BELOW PRIOR TO OCCUPANCY WHICH IS CAPABLE OF VENTING THROUGH THE LENGTH INSTALLED, AND SUBMIT INSTALLATION INSTRUCTIONS TO THE CODE INSPECTOR PRIOR TO COVERING UP THE DRYER DUCT.

SUGGESTED DRYER: SEE SHEET H4.01 FOR 1ST FLOOR NON COURTYARD, AND H4.09 OTHERWISE

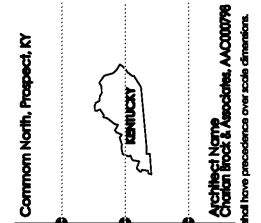
AIR FLOWS ARE INDICATED FOR THE LARGER AHU-CT. BALANCE EACH SUPPLY PROPORTIONALLY LOWER WHERE AHU-B IS USED.



HVAC SHEET NOTES

- MOUNT AHU PER DETAIL ON SHEET H6.01. SEE HEAT PUMP SCHEDULE ON SHEET H6.01.
- REFRIGERANT LINES TO CU'S ON ROOF. PROVIDE THRU FIRESTOP PENETRATION ASSEMBLY AT TRUSS PENETRATIONS. WHERE REFRIGERANT LINES ENTER TRUSSES FROM ACCESSIBLE AREAS OUTSIDE OF WALLS OR CAVITIES, PROVIDE THRU PENETRATION WITH A 1-HOUR F-RATING AS WELL AS A 1-HOUR F-RATING.
- UL LISTED DUCTLESS VENTILATING DEVICE FOR ABOVE.
- UNDERCUT DOOR 1" ABOVE FINISHED FLOOR.
- ROUTE ROUND BATH EXHAUST PER BATH EXHAUST DETAIL ON SHEET H6.05. 4" UNLESS OTHERWISE NOTED.
- ROUTE 4" DRYER VENT PER DRYER VENTING DETAIL ON SHEET H6.05.
- AVOID ROUTING DUCT OVER ELECTRICAL PANEL IN THIS AREA.
- PROVIDE GRILLE ON BOTH SIDES OF WALL ABOVE DOOR FOR DRYER MAKEUP OR RETURN AIR TRANSFER. CONNECT WITH GALVANIZED STEEL COLLAR. CENTER OVER THE DOOR. ANGLE GRILLE BLADES UP.
- PROVIDE ELBOW AS LESS THAN 45° SO AS TO KEEP THE TOTAL DRYER VENT LENGTH AS SHORT AS POSSIBLE.
- VENT TO ROOF WHERE THIS UNIT TYPE APPEARS ABOVE THE CLUBHOUSE OR ABOVE RETAIL ON THE FRONT FACE OF THE BUILDING. WALL VENTS ARE ACCEPTABLE ON THE COURTYARD SIDE. PROVIDE AS 4" AND 26 GAGE GALV STEEL, AND OTHERWISE COMPLY WITH THE REQUIREMENTS OF THE EXCEPTION OF SECTION 607.6.1 OF THE MECHANICAL CODE. TERMINATE WITH CURBED ROOF CAP. PROVIDE BIOSCREEN FOR BATH EXHAUST. PROVIDE BACKDRAFT DAMPER AND NO SCREEN FOR DRYER VENT.
- USE THIS ALTERNATE WHEN C1 UNIT IS ON END OF BUILDING AND HAS 2 EXTRA WINDOWS IN THE MASTER BEDROOM.

THE EXACT POSITION OF THE EXHAUST CAPS IS IMPORTANT. USUALLY CENTERED ABOVE WINDOWS. SEE ARCHITECTURAL ELEVATIONS



MiGre
Engineers LLC

780 FLORIDA CENTRAL PARKWAY
SUITE 224
LONGWOOD, FL 32750
PH: 407.336.7999
PROJECT #: 18025



Lyric at Norton Commons
Prospect, Kentucky

Bristol Development Group
381 Maloney Station Rd, Suite 204
Franklin, TN 37067

charlan brock
associates

architects • planners
1770 fennell street
maitland florida 32751-7208
407.660.8900 • 407.875.9948
www.cbaarchitects.com

UNIT C1 AND C1-A
HVAC
PLANS

date: 06-04-2019
job no: 3789.15
drawn by: GNIK
reviewed by: GNIK
file: 18025-H-UNIT
issue history:
07-03-2019

H4.07