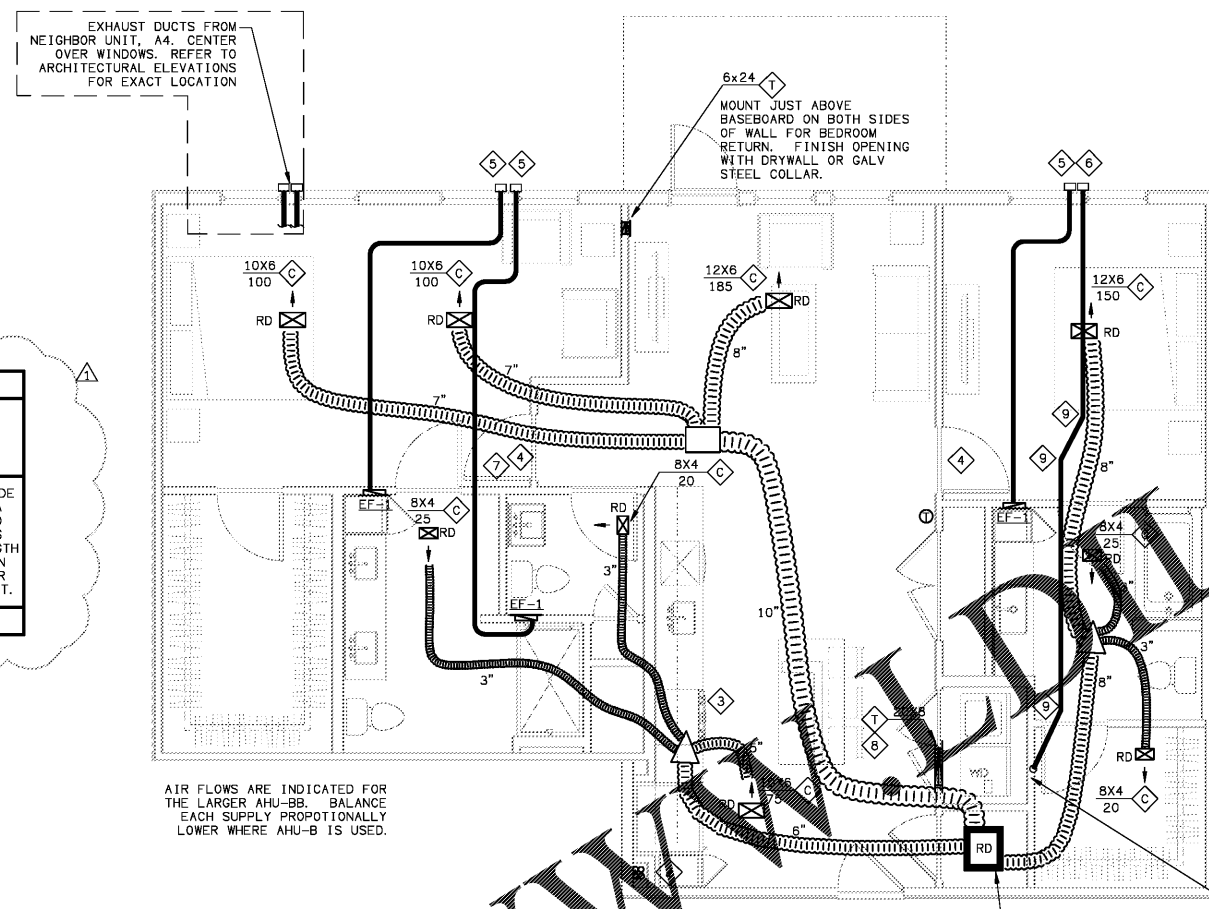


Order Plans @ [www.dynalines.com](http://www.dynalines.com)



MAX DRYER VENT LENGTH B5A

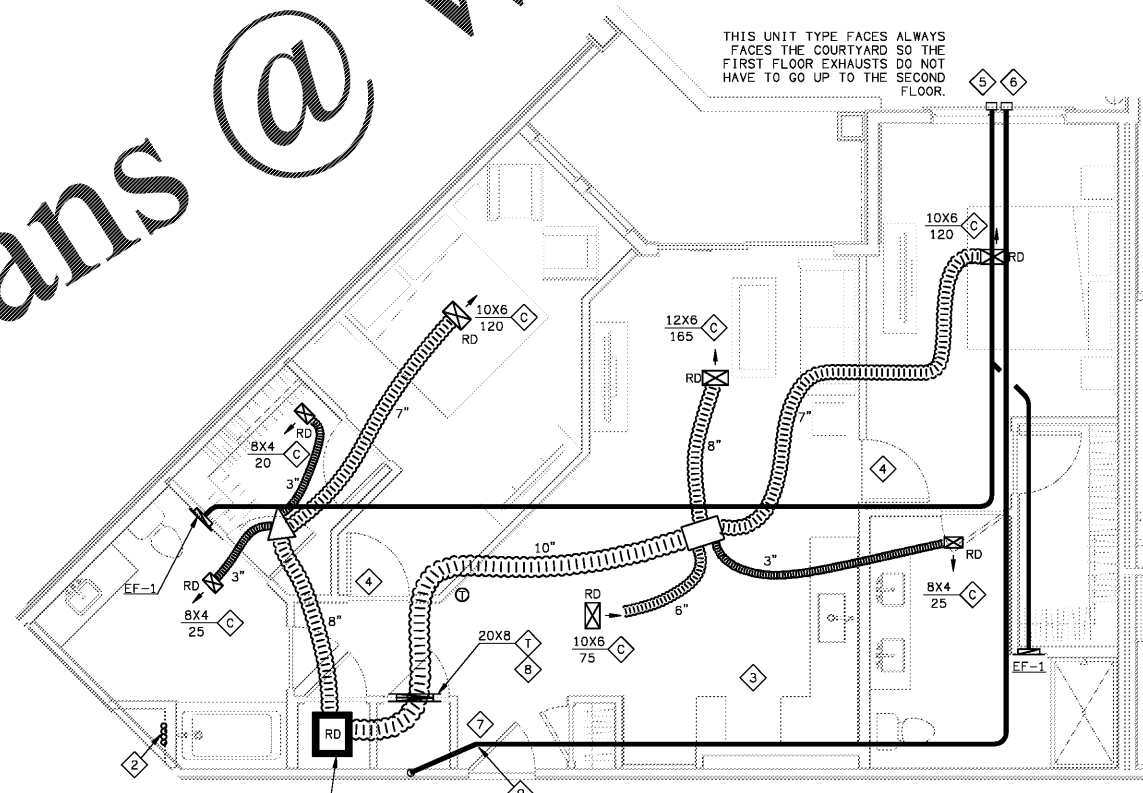
HORIZONTAL	27FT
VERTICAL	10FT
1 90° HARD ELBOW	
1 IN FLEX	

THIS DRYER VENT EXCEEDS 35 FEET CODE EQUIVALENT. THEREFORE, PROVIDE A DRYER SUCH AS THE MODEL SUGGESTED BELOW PRIOR TO OCCUPANCY WHICH IS CAPABLE OF VENTING THROUGH THE LENGTH INSTALLED, AND SUBMIT INSTALLATION INSTRUCTIONS TO THE CODE INSPECTOR PRIOR TO COVERING UP THE DRYER DUCT.

SUGGESTED DRYER: SEE SHEET H4.09

AIR FLOWS ARE INDICATED FOR THE LARGER AHU-BB. BALANCE EACH SUPPLY PROPORTIONALLY LOWER WHERE AHU-B IS USED.

1 UNIT B5-A HVAC PLAN  
SCALE: 1/4"=1'-0"  
18025-H-UNIT



MAX DRYER VENT LENGTH B6

HORIZONTAL	58FT
VERTICAL	10FT
2 90° HARD ELBOWS	
1 IN FLEX	

THIS DRYER VENT EXCEEDS 35 FEET CODE EQUIVALENT. THEREFORE, PROVIDE A DRYER SUCH AS THE MODEL SUGGESTED BELOW PRIOR TO OCCUPANCY WHICH IS CAPABLE OF VENTING THROUGH THE LENGTH INSTALLED, AND SUBMIT INSTALLATION INSTRUCTIONS TO THE CODE INSPECTOR PRIOR TO COVERING UP THE DRYER DUCT.

SUGGESTED DRYER: SEE SHEET H4.01

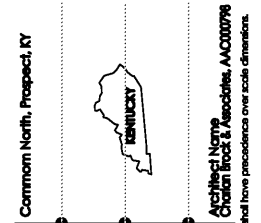
2 UNIT B6 - HVAC PLAN  
SCALE: 1/4"=1'-0"  
18025-H-UNIT

HVAC SHEET NOTES

- MOUNT AHU PER DETAIL ON SHEET H6.01. SEE HEAT PUMP SCHEDULE ON SHEET H6.01.
- REFRIGERANT LINES TO CU'S ON ROOF. PROVIDE THRU FIRESTOP PENETRATION ASSEMBLY AT TRUSS PENETRATIONS. WHERE REFRIGERANT LINES ENTER TRUSSES FROM ACCESSIBLE AREAS OUTSIDE OF WALLS OR CAVITIES, PROVIDE THRU PENETRATION WITH A 1-HOUR T-RATING AS WELL AS A 1-HOUR F-RATING.
- UNLISTED DUCTLESS VENTILATING DEVICE FOR SERVICE.
- UNDERCUT DOOR 1" ABOVE FINISHED FLOOR.
- ROUTE ROUND BATH EXHAUST PER BATH EXHAUST DETAIL ON SHEET H6.05. 4" UNLESS OTHERWISE NOTED.
- ROUTE 4" DRYER VENT PER DRYER VENTING DETAIL ON SHEET H6.05.
- AVOID ROUTING DUCT OVER ELECTRICAL PANEL IN THIS AREA.
- PROVIDE GRILLE ON BOTH SIDES OF WALL ABOVE DOOR FOR DRYER MAKEUP OR RETURN AIR TRANSFER. CONNECT WITH GALVANIZED STEEL COLLAR. CENTER OVER THE DOOR. ANGLE GRILLE BLADES UP.
- PROVIDE ELBOW AS LESS THAN 45° SO AS TO KEEP THE TOTAL DRYER VENT LENGTH AS SHORT AS POSSIBLE.
- VENT TO ROOF WHERE THIS UNIT TYPE APPEARS ABOVE THE CLUBHOUSE OR ABOVE RETAIL ON THE FRONT FACE OF THE BUILDING. WALL VENTS ARE ACCEPTABLE ON THE COURTYARD SIDE. PROVIDE AS 4" AND 26 GAGE GALV. STEEL, AND OTHERWISE COMPLY WITH THE REQUIREMENTS OF THE EXCEPTION OF SECTION 607.6.1 OF THE MECHANICAL CODE. TERMINATE WITH CURBED ROOF CAP. PROVIDE SIROSCREEN FOR BATH EXHAUST. PROVIDE BACKDRAFT DAMPER AND NO SCREEN FOR DRYER VENT.

PROVIDE 6" WALL

THE EXACT POSITION OF THE EXHAUST CAPS IS IMPORTANT. USUALLY CENTERED ABOVE WINDOWS. SEE ARCHITECTURAL ELEVATIONS



**MiGre**  
Engineers LLC

780 FLORIDA CENTRAL PARKWAY  
SUITE 224  
LONGWOOD, FL 32750  
PH: 407.336.7999  
PROJECT #: 18025



Lyric at Norton Commons  
Prospect, Kentucky

Bristol Development Group  
381 Maloney Station Rd, Suite 204  
Franklin, TN 37067

**charlan brock**  
associates

architects • planners

1770 fennell street  
maitland florida 32751-7208  
407.660.8900 • 407.875.9948  
www.cbarchitects.com

UNIT B5-A AND B6  
HVAC  
PLANS

date: 06-04-2019  
job no: 3789.15  
drawn by: GNIK  
reviewed by: GNIK  
file: 18025-H-UNIT  
issue history:  
07-03-2019

H4.06