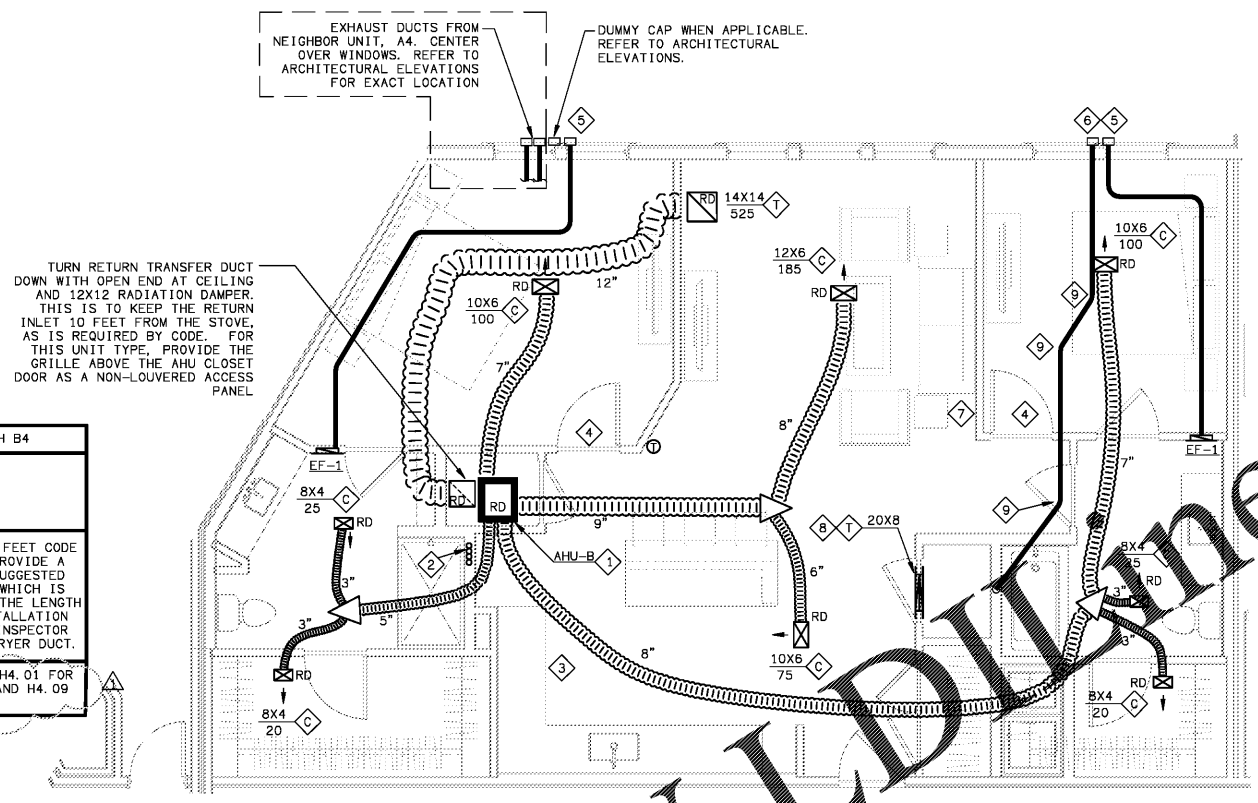


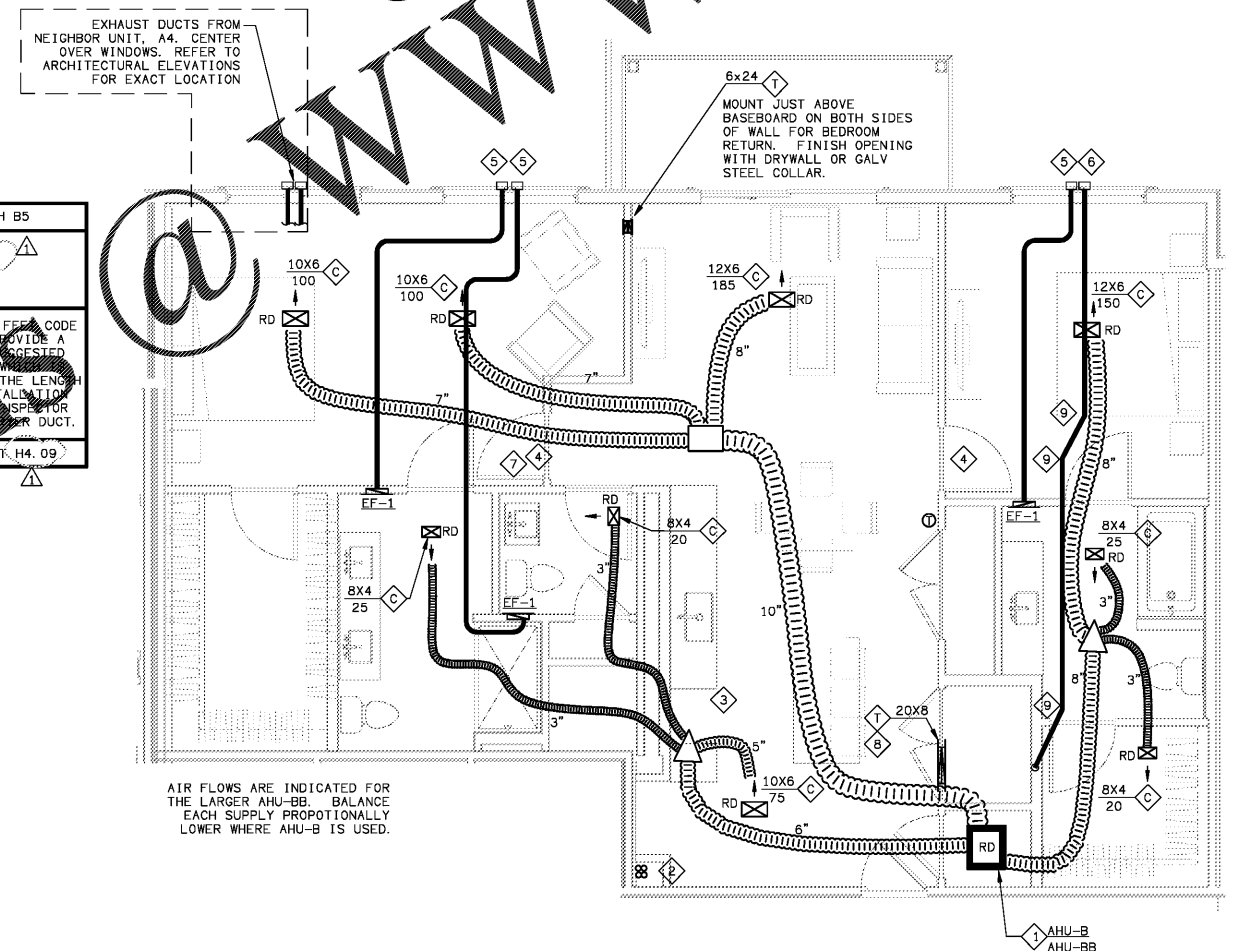
Order Plans

MAX DRYER VENT LENGTH B4	
HORIZONTAL	22FT
VERTICAL	22FT
1 90° HARD ELBOW 1 IN FLEX	
THIS DRYER VENT EXCEEDS 35 FEET CODE EQUIVALENT. THEREFORE, PROVIDE A DRYER SUCH AS THE MODEL SUGGESTED BELOW PRIOR TO OCCUPANCY WHICH IS CAPABLE OF VENTING THROUGH THE LENGTH INSTALLED, AND SUBMIT INSTALLATION INSTRUCTIONS TO THE CODE INSPECTOR PRIOR TO COVERING UP THE DRYER DUCT.	
SUGGESTED DRYER: SEE SHEET H4.01 FOR 1ST FLOOR NON COURTYARD, AND H4.09 OTHERWISE	

MAX DRYER VENT LENGTH B5	
HORIZONTAL	27FT
VERTICAL	10FT
1 90° HARD ELBOW 1 IN FLEX	
THIS DRYER VENT EXCEEDS 35 FEET CODE EQUIVALENT. THEREFORE, PROVIDE A DRYER SUCH AS THE MODEL SUGGESTED BELOW PRIOR TO OCCUPANCY WHICH IS CAPABLE OF VENTING THROUGH THE LENGTH INSTALLED, AND SUBMIT INSTALLATION INSTRUCTIONS TO THE CODE INSPECTOR PRIOR TO COVERING UP THE DRYER DUCT.	
SUGGESTED DRYER: SEE SHEET H4.09	



1 UNIT B4 - HVAC PLAN
 SCALE: 1/4"=1'-0"



2 UNIT B5 - HVAC PLAN
 SCALE: 1/4"=1'-0"

AIR FLOWS ARE INDICATED FOR THE LARGER AHU-BB. BALANCE EACH SUPPLY PROPORTIONALLY LOWER WHERE AHU-B IS USED.

HVAC SHEET NOTES

- 1 MOUNT AHU PER DETAIL ON SHEET H6.01. SEE HEAT PUMP SCHEDULE ON SHEET H6.01.
- 2 REFRIGERANT LINES TO CU'S ON ROOF. PROVIDE THRU FIRESTOP PENETRATION ASSEMBLY AT TRUSS PENETRATIONS. WHERE REFRIGERANT LINES ENTER TRUSSES FROM ACCESSIBLE AREAS OUTSIDE OF WALLS OR CAVITIES, PROVIDE THRU PENETRATION WITH A 1-HOUR T-RATING AS WELL AS A 1-HOUR F-RATING.
- 3 UNLIMITED DUCTLESS VENTILATING DEVICE FOR STOVE.
- 4 UNDERCUT DOOR 1" ABOVE FINISHED FLOOR.
- 5 ROUTE ROUND BATH EXHAUST PER BATH EXHAUST DETAIL ON SHEET H6.05. 4" UNLESS OTHERWISE NOTED.
- 6 ROUTE 4" DRYER VENT PER DRYER VENTING DETAIL ON SHEET H6.05.
- 7 AVOID ROUTING DUCT OVER ELECTRICAL PANEL IN THIS AREA.
- 8 PROVIDE GRILLE ON BOTH SIDES OF WALL ABOVE DOOR FOR DRYER MAKEUP OR RETURN AIR TRANSFER. CONNECT WITH GALVANIZED STEEL COLLAR. CENTER OVER THE DOOR. ANGLE GRILLE BLADES UP.
- 9 PROVIDE ELBOW AS LESS THAN 45° SO AS TO KEEP THE TOTAL DRYER VENT LENGTH AS SHORT AS POSSIBLE.
- 10 VENT TO ROOF WHERE THIS UNIT TYPE APPEARS ABOVE THE CLUBHOUSE OR ABOVE RETAIL ON THE FRONT FACE OF THE BUILDING. WALL VENTS ARE ACCEPTABLE ON THE COURTYARD SIDE. PROVIDE AS 4" AND 26 GAGE GALV STEEL, AND OTHERWISE COMPLY WITH THE REQUIREMENTS OF THE EXCEPTION OF SECTION 607.6.1 OF THE MECHANICAL CODE. TERMINATE WITH CURBED ROOF CAP. PROVIDE BIRDSCREEN FOR BATH EXHAUST. PROVIDE BACKDRAFT DAMPER AND NO SCREEN FOR DRYER VENT.

THE EXACT POSITION OF THE EXHAUST CAPS IS IMPORTANT. USUALLY CENTERED ABOVE WINDOWS. SEE ARCHITECTURAL ELEVATIONS

Common North, Prospect, KY

MiGre
 Engineers LLC

780 FLORIDA CENTRAL PARKWAY
 SUITE 224
 LONGWOOD, FL 32750
 PH: 407.336.7999
 PROJECT #: 18025

Lyric at Norton Commons
Prospect, Kentucky

Bristol Development Group
381 Maloney Station Rd, Suite 204
Franklin, TN 37067

charlan • brock
 associates

architects • planners

1770 fennell street
 maitland florida 32751-7208
 407.660.8900 • 407.875.9948
 www.cbaarchitects.com

UNIT B4 AND B5
HVAC
PLANS

date: 06-04-2019
 job no: 3789.15
 drawn by: GNIK
 reviewed by: GNIK
 file: 18025-H-UNIT
 issue history:

07-03-2019

H4.05

charlan brock associates, inc. hereby reserves its copyright in, and title to, these plans, ideas, and designs. These plans, ideas, and designs are not to be reproduced, changed or copied in any form or manner whatsoever, nor are they to be assigned to any third party, without first obtaining the express written permission from charlan brock associates, inc. within dimensions and have precedence over scale dimensions.