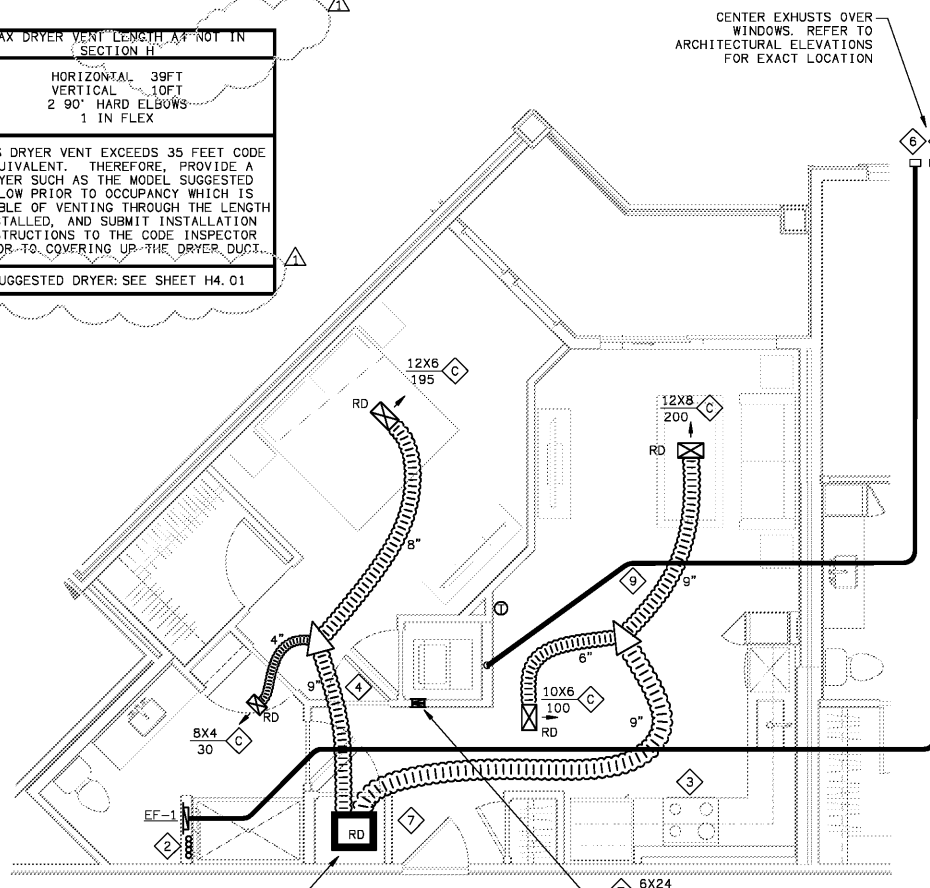


MAX DRYER VENT LENGTH A4-NOT IN SECTION H

HORIZONTAL 39FT
VERTICAL 10FT
2 90° HARD ELBOWS
1 IN FLEX

THIS DRYER VENT EXCEEDS 35 FEET CODE EQUIVALENT. THEREFORE, PROVIDE A DRYER SUCH AS THE MODEL SUGGESTED BELOW PRIOR TO OCCUPANCY WHICH IS CAPABLE OF VENTING THROUGH THE LENGTH INSTALLED, AND SUBMIT INSTALLATION INSTRUCTIONS TO THE CODE INSPECTOR PRIOR TO COVERING UP THE DRYER DUCT.

SUGGESTED DRYER: SEE SHEET H4.01



2 UNIT A4 - HVAC PLAN
SCALE: 1/4"=1'-0"

MAX DRYER VENT LENGTH A4 SECTION H

HORIZONTAL 60FT
VERTICAL 22FT
3 90° HARD ELBOWS
1 45° HARD ELBOWS
1 90° IN FLEX

THIS DRYER VENT EXCEEDS 35 FEET CODE EQUIVALENT. THEREFORE, PROVIDE A DRYER SUCH AS THE MODEL SUGGESTED BELOW PRIOR TO OCCUPANCY WHICH IS CAPABLE OF VENTING THROUGH THE LENGTH INSTALLED, AND SUBMIT INSTALLATION INSTRUCTIONS TO THE CODE INSPECTOR PRIOR TO COVERING UP THE DRYER DUCT.

SUGGESTED DRYER: SEE SHEET H4.01

MAX DRYER VENT LENGTH A3.1

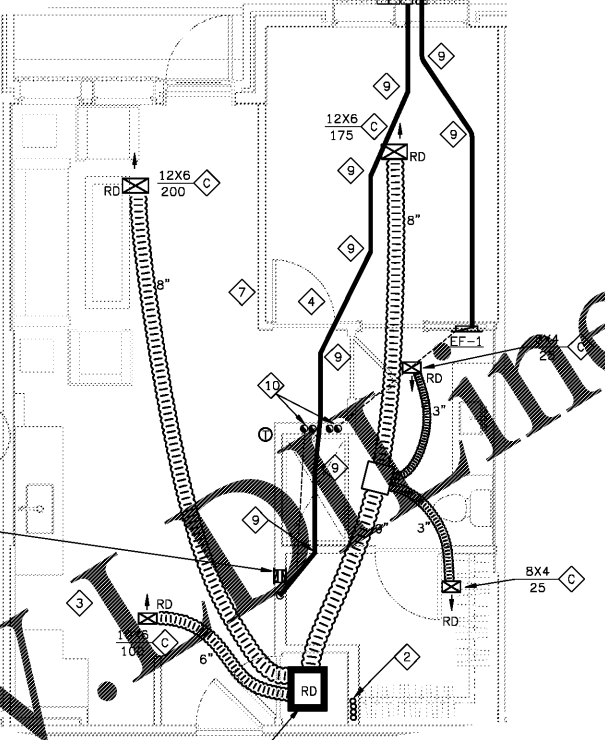
HORIZONTAL 29FT
VERTICAL 22FT
1 90° HARD ELBOW
1 IN FLEX

THIS DRYER VENT EXCEEDS 35 FEET CODE EQUIVALENT. THEREFORE, PROVIDE A DRYER SUCH AS THE MODEL SUGGESTED BELOW PRIOR TO OCCUPANCY WHICH IS CAPABLE OF VENTING THROUGH THE LENGTH INSTALLED, AND SUBMIT INSTALLATION INSTRUCTIONS TO THE CODE INSPECTOR PRIOR TO COVERING UP THE DRYER DUCT.

SUGGESTED DRYER: SEE SHEET H4.01 FOR 2ND FLOOR NON COURTYARD, H4.01 FOR 3RD FLOOR NON-COURTYARD OVER RETAIL AND CLUBHOUSE, AND H4.09 OTHERWISE

6X24
MOUNT JUST ABOVE BASEBOARD FOR DRYER MAKEUP AIR. FINISH OPENING WITH DRYWALL OR GALV STEEL COLLAR.

WHERE 1ST FL UNIT HAS BRICK, LAND 1ST FL CAPS AT 2ND FL. SEE ARCHITECTURAL ELEVATIONS FOR GUIDANCE. COURTYARD IS NOT INTENDED TO HAVE BRICK



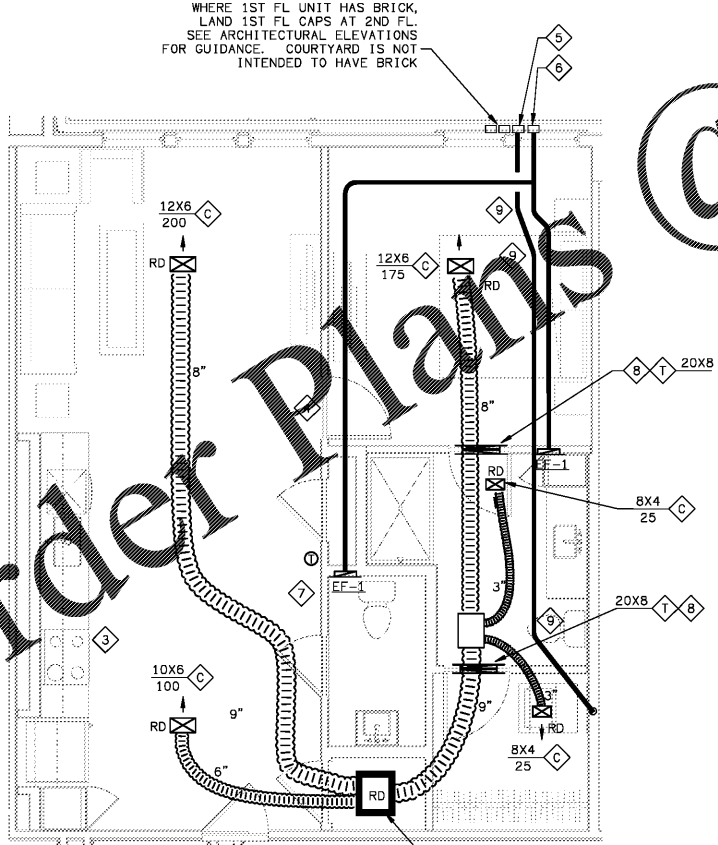
1 UNIT A3.1 - HVAC PLAN
SCALE: 1/4"=1'-0"

MAX DRYER VENT LENGTH A5

HORIZONTAL 29FT
VERTICAL 22FT
1 90° HARD ELBOW
1 IN FLEX

THIS DRYER VENT EXCEEDS 35 FEET CODE EQUIVALENT. THEREFORE, PROVIDE A DRYER SUCH AS THE MODEL SUGGESTED BELOW PRIOR TO OCCUPANCY WHICH IS CAPABLE OF VENTING THROUGH THE LENGTH INSTALLED, AND SUBMIT INSTALLATION INSTRUCTIONS TO THE CODE INSPECTOR PRIOR TO COVERING UP THE DRYER DUCT.

SUGGESTED DRYER: SEE SHEET H4.01 FOR 1ST FLOOR NON COURTYARD, AND H4.09 OTHERWISE



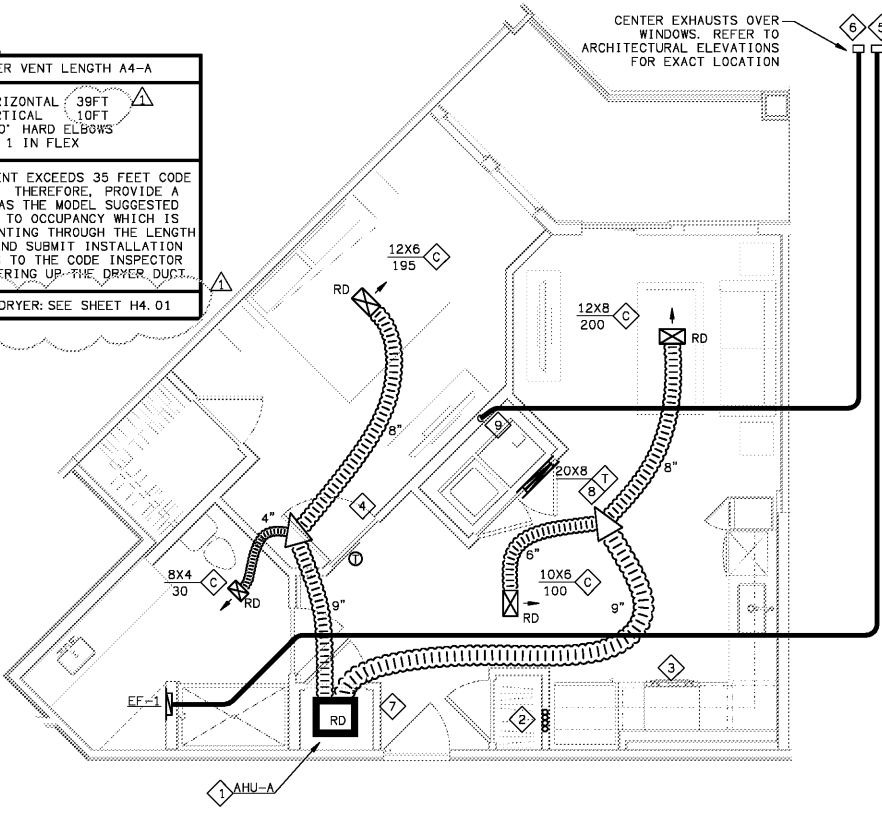
4 UNIT A5 - HVAC PLAN
SCALE: 1/4"=1'-0"

MAX DRYER VENT LENGTH A4-A

HORIZONTAL 39FT
VERTICAL 10FT
2 90° HARD ELBOWS
1 IN FLEX

THIS DRYER VENT EXCEEDS 35 FEET CODE EQUIVALENT. THEREFORE, PROVIDE A DRYER SUCH AS THE MODEL SUGGESTED BELOW PRIOR TO OCCUPANCY WHICH IS CAPABLE OF VENTING THROUGH THE LENGTH INSTALLED, AND SUBMIT INSTALLATION INSTRUCTIONS TO THE CODE INSPECTOR PRIOR TO COVERING UP THE DRYER DUCT.

SUGGESTED DRYER: SEE SHEET H4.01



3 UNIT A4-A - HVAC PLAN
SCALE: 1/4"=1'-0"

HVAC SHEET NOTES

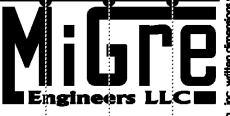
- 1 MOUNT AHU PER DETAIL ON SHEET H6.01. SEE HEAT PUMP SCHEDULE ON SHEET H6.01.
- 2 REFRIGERANT LINES TO CU'S ON ROOF. PROVIDE THRU FIRESTOP PENETRATION ASSEMBLY AT TRUSS PENETRATIONS. WHERE REFRIGERANT LINES ENTER TRUSSES FROM ACCESSIBLE AREAS OUTSIDE OF WALLS OR CAVITIES, PROVIDE THRU PENETRATION WITH A 1-HOUR T-RATING AS WELL AS A 1-HOUR F-RATING.
- 3 UNLIMITED DUCTLESS VENTILATING DUCTS FOR SERVICE.
- 4 UNDERCUT DOOR 1" ABOVE FINISHED FLOOR.
- 5 ROUTE ROUND BATH EXHAUST PER BATH EXHAUST DETAIL ON SHEET H6.05. 4" UNLESS OTHERWISE NOTED.
- 6 ROUTE 4" DRYER VENT PER DRYER VENTING DETAIL ON SHEET H6.05.
- 7 AVOID ROUTING DUCT OVER ELECTRICAL PANEL IN THIS AREA.
- 8 PROVIDE GRILLE ON BOTH SIDES OF WALL ABOVE DOOR FOR DRYER MAKEUP OR RETURN AIR TRANSFER. CONNECT WITH GALVANIZED STEEL COLLAR. CENTER OVER THE DOOR. ANGLE GRILLE BLADES UP.
- 9 PROVIDE ELBOW AS LESS THAN 45° SO AS TO KEEP THE TOTAL DRYER VENT LENGTH AS SHORT AS POSSIBLE.
- 10 VENT TO ROOF WHERE THIS UNIT TYPE APPEARS ABOVE THE CLUBHOUSE OR ABOVE RETAIL ON THE FRONT FACE OF THE BUILDING. WALL VENTS ARE ACCEPTABLE ON THE COURTYARD SIDE. PROVIDE AS 4" AND 26 GAGE GALV STEEL, AND OTHERWISE COMPLY WITH THE REQUIREMENTS OF THE EXCEPTION OF SECTION 607.6.1 OF THE MECHANICAL CODE. TERMINATE WITH CURBED ROOF CAP. PROVIDE BIRSOREEN FOR BATH EXHAUST. PROVIDE BACKDRAFT DAMPER AND NO SCREEN FOR DRYER VENT.

THE EXACT POSITION OF THE EXHAUST CAPS IS IMPORTANT. USUALLY CENTERED ABOVE WINDOWS. SEE ARCHITECTURAL ELEVATIONS

Order Plans @

WWW.WORKLINE.COM

Common North, Prospect, KY



780 FLORIDA CENTRAL PARKWAY
SUITE 224
LONGWOOD, FL 32750
PH: 407.336.7999
PROJECT #: 18025



Lyric at Norton Commons
Prospect, Kentucky

Bristol Development Group
381 Maloney Station Rd, Suite 204
Franklin, TN 37067



1770 fennell street
maitland florida 32751-7208
407.660.8900 : 407.875.5948
www.cbaarchitects.com

UNIT A3.1, A4, A4-A AND A5
HVAC
PLANS

date: 06-04-2019
job no: 3789.15
drawn by: GNIK
reviewed by: GNIK
file: 18025-H-UNIT
issue history:
07-03-2019

H4.03

Architects, Engineers, Planners, etc. hereby represent their consent for copyright and other rights in these plans, ideas, and information and their use are not to be reproduced, changed or copied in any form or manner whatsoever, nor are they to be assigned to any third party, without first obtaining the express written permission from C.B.A., Inc. within dimensions and have precedence over actual dimensions.