

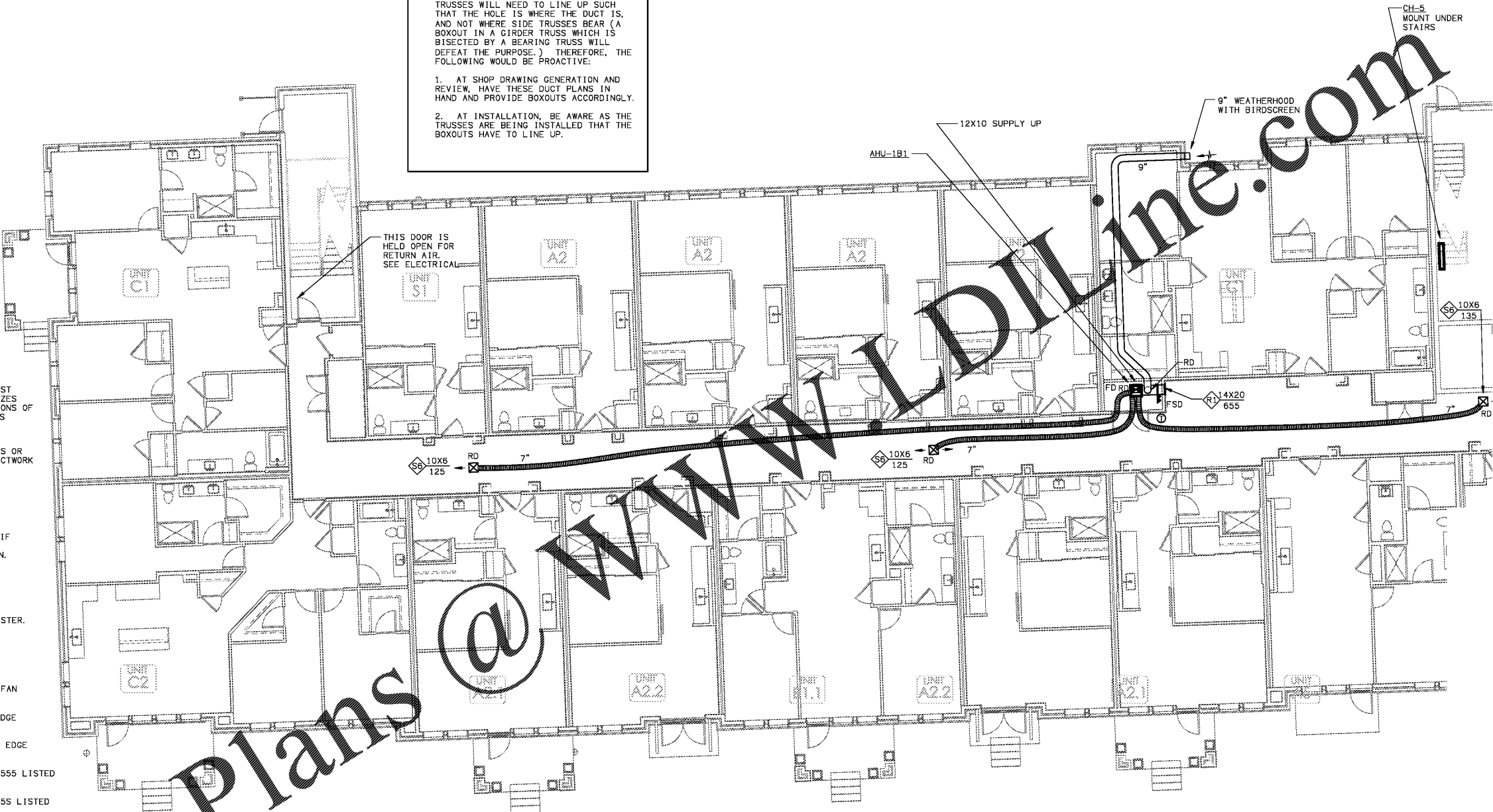
**GENERAL CONTRACTOR  
AND STRUCTURAL TEAM**

THE CORRIDOR HVAC SUPPLY DUCTS WILL BE ROUTED IN THE TRUSSES. THIS WILL REQUIRE A BOXOUT CLOSE TO THE CENTER SPAN OF THE TRUSSES. THESE BOXOUTS MUST LINE UP FROM TRUSS TO TRUSS TO PREVENT EXCESSIVE JOGGING OF THE DUCT. THUS, TRUSSES OF DIFFERENT LENGTHS WILL REQUIRE THE BOXOUT IN DIFFERENT POSITIONS ALONG THE TRUSS. IN ADDITION, BOXOUTS IN GIRDER TRUSSES WILL NEED TO LINE UP SUCH THAT THE HOLE IS WHERE THE DUCT IS, AND NOT WHERE SIDE TRUSSES BEAR (A BOXOUT IN A GIRDER TRUSS WHICH IS BISECTED BY A BEARING TRUSS WILL DEFEAT THE PURPOSE.) THEREFORE, THE FOLLOWING WOULD BE PROACTIVE:

1. AT SHOP DRAWING GENERATION AND REVIEW, HAVE THESE DUCT PLANS IN HAND AND PROVIDE BOXOUTS ACCORDINGLY.
2. AT INSTALLATION, BE AWARE AS THE TRUSSES ARE BEING INSTALLED THAT THE BOXOUTS HAVE TO LINE UP.

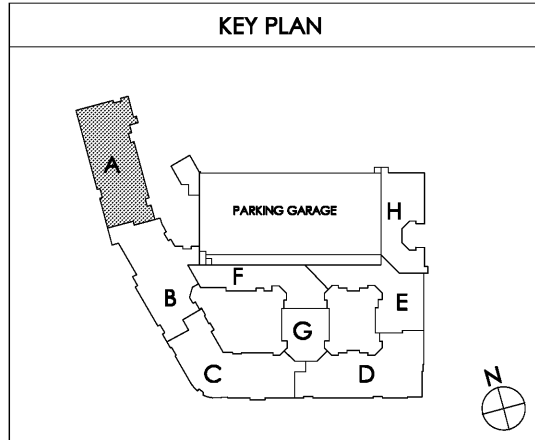
**HVAC LEGEND**

- DUCT SIZE IN INCHES. FIRST FIGURE IS SIDE SHOWN. SIZES SHOWN ARE INSIDE DIMENSIONS OF INSULATION IF DUCTWORK IS INTERNALLY INSULATED.
- ONE SIDED DUCT EXPANSIONS OR CONTRACTION WITH FLEX DUCTWORK AND SPIN-IN FITTING
- ELBOW & TURNING VANES
- CEILING MOUNTED SUPPLY. IF OTHER THAN 4-WAY, ARROWS INDICATE AIR FLOW PATTERN.
- CEILING RETURN.
- WALL-MOUNTED SUPPLY REGISTER.
- WALL-MOUNTED RETURN.
- CEILING MOUNTED EXHAUST FAN
- THERMOSTAT. MOUNT TOP EDGE LESS THAN 48" AFF
- DEHUMIDISTAT. MOUNT TOP EDGE LESS THAN 48" AFF
- DYNAMIC FIRE DAMPER, UL 555 LISTED
- FIRE/SMOKE DAMPER, UL 555S LISTED
- RADIATION DAMPER, UL 555C LISTED
- PIPE DOWN
- PIPE UP
- VOLUME DAMPER
- MOTORIZED DAMPER
- DUCT ELBOW WITH INNER RADIUS EQUAL TO DUCT W
- RETURN OR OUTSIDE AIR DUCT TURN DOWN TO SIDEWALL REGISTER
- CUT THRU SUPPLY DUCT
- CUT THRU RETURN OR OUTSIDE AIR DUCT
- CUT THRU EXHAUST DUCT
- LINEAR DIFFUSER X FEET LONG, WITH Y NUMBER OF SLOTS AT Z WIDTH IN INCHES



Order Plans @ WWW.DIline.com

**1 PARTIAL BUILDING PLAN A - (00) BASEMENT - HVAC PLAN**  
SCALE: 1/8" = 1'-0"



Charlan Brock Associates, Inc. hereby reserves its copyright in, and title to, these plans, specifications, and other documents. These documents are the property of Charlan Brock Associates, Inc. and shall remain the property of Charlan Brock Associates, Inc. until they are specifically released in writing. No part of these documents may be reproduced, stored in a retrieval system, or transmitted in any form or by any means, electronic, mechanical, photocopying, recording, or by any information storage and retrieval system, without the prior written permission of Charlan Brock Associates, Inc.