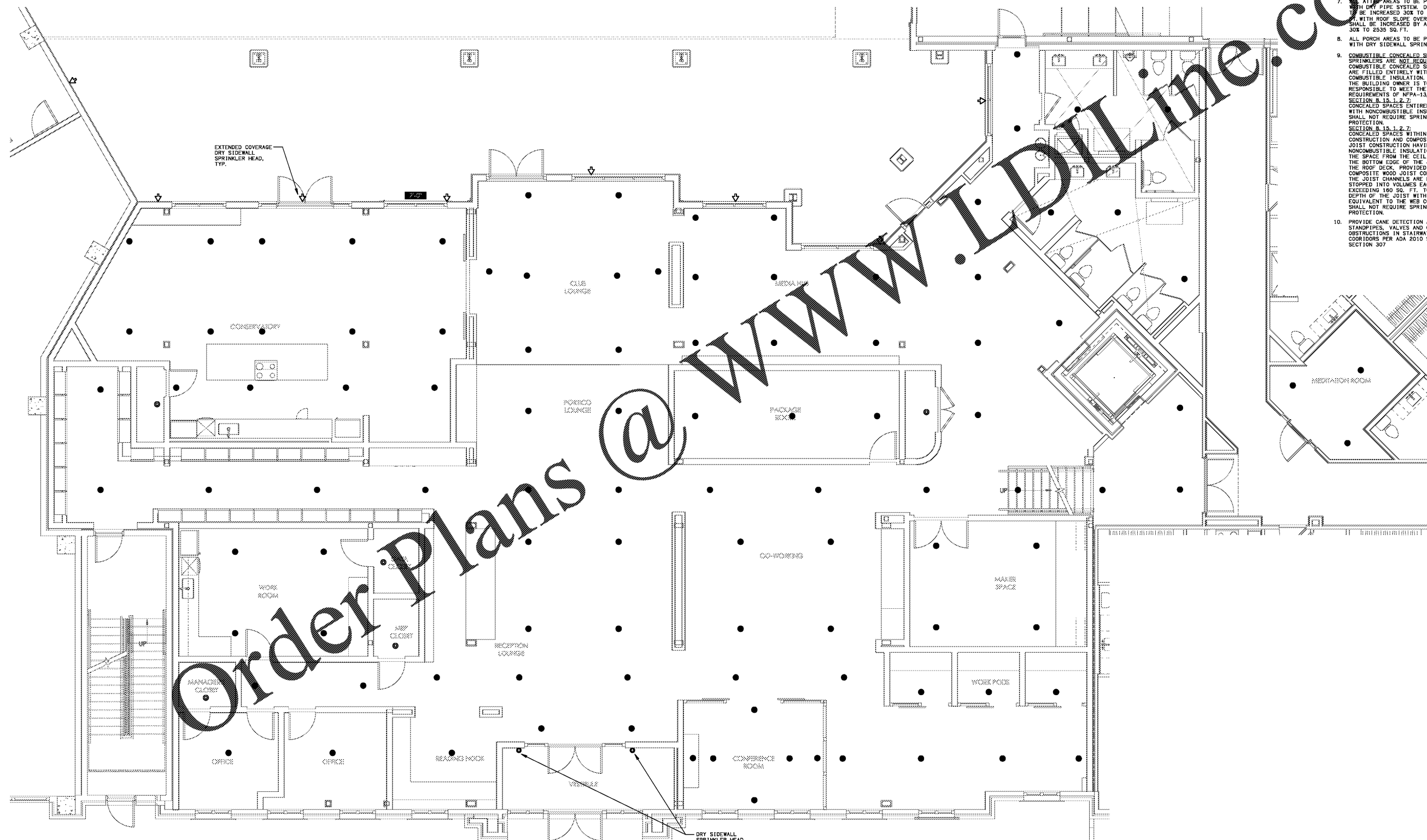


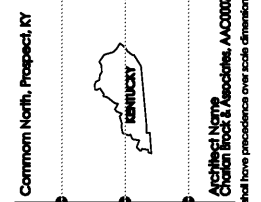
FIRE PROTECTION GENERAL NOTES - NFPA 13 SYSTEM - CLUBHOUSE ONLY

1. THE INTENT OF THESE DRAWINGS IS TO SHOW SPRINKLER HEAD LOCATIONS THAT HAVE BEEN COORDINATED WITH OTHER ENGINEERING TRADES (ELECTRICAL AND HVAC). THE INSTALLING CONTRACTOR IS RESPONSIBLE FOR COMPLETING FULLY COORDINATED DRAWINGS THAT INCLUDE THE PIPING LAYOUT AND HYDRAULIC CALCULATIONS.
2. ALL FIRE SPRINKLER SYSTEMS SHALL BE MONITORED BY AN APPROVED SUPERVISING STATION IN ACCORDANCE WITH NFPA 72.
3. THIS BUILDING TO BE PROTECTED IN ACCORDANCE WITH NFPA-13 2013 EDITION.
4. SPRINKLER SYSTEMS TO BE DESIGNED IN ACCORDANCE WITH NFPA-13, 2013 EDITION.
5. ALL UNDERGROUND MAINS TO BE DESIGNED IN ACCORDANCE WITH NFPA-13 2013 EDITION.
6. DESIGN DEMANDS FOR MECHANICAL OR ELECTRICAL SPACES TO BE ORDINARY HAZARD GROUP 1, 1500 WITH ROOF AREA NOT TO EXCEED 130 SQ. FT. DESIGN DEMAND TO BE 250 GPM.
7. ALL ATTIC AREAS TO BE PROTECTED WITH DRY PIPE SYSTEM. DESIGN AREA SHALL BE INCREASED 30% TO 1950 SQ. FT. WITH ROOF SLOPE OVER 2% DESIGN SHALL BE INCREASED BY ADDITIONAL 30% TO 2535 SQ. FT.
8. ALL PORCH AREAS TO BE PROTECTED WITH DRY SIDEWALL SPRINKLERS.
9. **COMBUSTIBLE CONCEALED SPACES:** SPRINKLERS ARE NOT REQUIRED IN ALL COMBUSTIBLE CONCEALED SPACES THAT ARE FILLED ENTIRELY WITH NON COMBUSTIBLE INSULATION. THE BUILDING OWNER IS TO BE RESPONSIBLE TO MEET THE REQUIREMENTS OF NFPA-13, SECTION 8.15.1.2.2. CONCEALED SPACES ENTIRELY FILLED WITH NONCOMBUSTIBLE INSULATION SHALL NOT REQUIRE SPRINKLER PROTECTION. SECTION 8.15.1.2.2. CONCEALED SPACES WITHIN WOOD JOIST CONSTRUCTION AND COMPOSITE WOOD JOIST CONSTRUCTION HAVING NONCOMBUSTIBLE INSULATION FILLING THE SPACE FROM THE CEILING UP TO THE BOTTOM EDGE OF THE JOIST OF THE ROOF DECK, PROVIDED THAT IN COMPOSITE WOOD JOIST CONSTRUCTION THE JOIST CHANNELS ARE FIRE STOPPED INTO VOLUMES EACH NOT EXCEEDING 160 SQ. FT. TO THE FULL DEPTH OF THE JOIST WITH MATERIAL EQUIVALENT TO THE WEB CONSTRUCTION, SHALL NOT REQUIRE SPRINKLER PROTECTION.
10. PROVIDE CANE DETECTION AT STANDPIPES, VALVES AND OTHER OBSTRUCTIONS IN STAIRWAYS AND CORRIDORS PER ADA 2010 STDS SECTION 307.



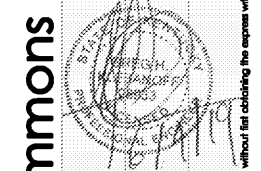
1 CLUBHOUSE - FIRE PROTECTION PLAN
SCALE: 3/16"=1'-0"

18025-F-CLUB



MiGre
Engineers LLC

780 FLORIDA CENTRAL PARKWAY
SUITE 224
LONGWOOD, FL 32750
PH: 407.336.7999
PROJECT #: 18025



Lyric at Norton Commons
Prospect, Kentucky

Bristol Development Group
381 Maloney Station Rd, Suite 204
Franklin, TN 37067

charlan • brock
associates
architects • planners

1770 fennell street
maitland florida 32751-7208
407.660.8900 • 407.875.5948
www.cbaarchitects.com

CLUBHOUSE
FIRE PROTECTION
PLAN

date: 06-04-2019
job no: 3789.15
drawn by: GNIK
reviewed by: GNIK
file: 18025-F-CLUB
issue history:

F4.40

Charlan Brock Associates, Inc. hereby reserves its copyright in, and other rights in, these drawings, ideas, and designs. These drawings, ideas, and designs are not to be reproduced, changed or copied in any form or manner whatsoever, nor are they to be assigned to any third party, without first obtaining the express written permission from C.B.A., Inc. within dimensions and have precedence over scale dimensions.