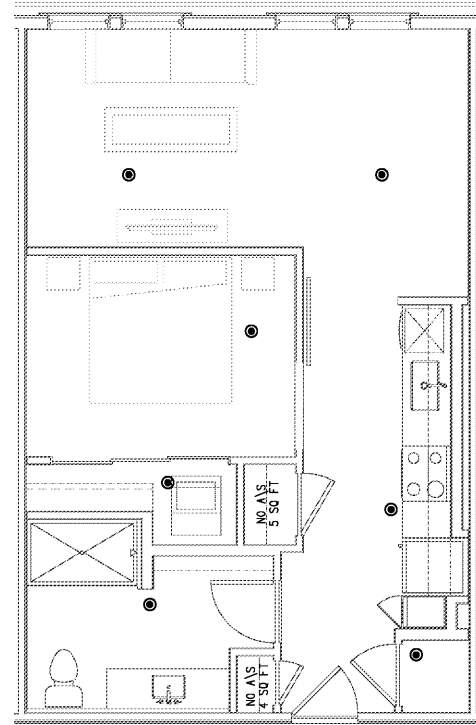
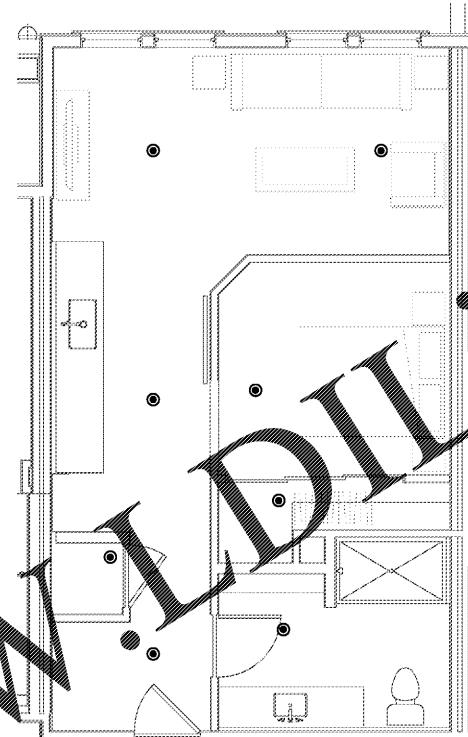


FIRE PROTECTION GENERAL NOTES – NFPA 13 SYSTEM

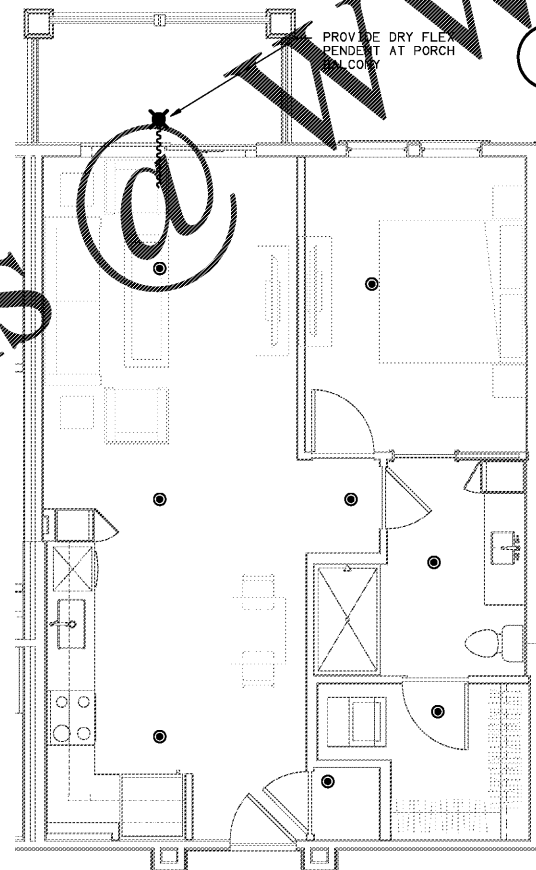
1. THE INTENT OF THESE DRAWING IS TO SHOW SPRINKLER HEAD LOCATIONS THAT HAVE BEEN COORDINATED WITH OTHER ENGINEERING TRADES (ELECTRICAL AND HVAC). IT IS THE INSTALLING CONTRACTOR THAT IS RESPONSIBLE COMPLETING FULLY COORDINATED DRAWINGS THAT INCLUDE THE PIPING LAYOUT AND HYDRAULIC CALCULATIONS.
2. ALL FIRE SPRINKLER SYSTEMS SHALL BE MONITORED BY AN APPROVED SUPERVISING STATION IN ACCORDANCE WITH NFPA 72
3. THIS BUILDING TO BE PROTECTED IN ACCORDANCE WITH NFPA-13 2013 EDITION AND 2012 IBC AND 2012 IFC
4. ALL DWELLING UNITS TO BE HYDRAULICALLY DESIGNED TO PROVIDE 0.05 DENSITY GROUP 1.5 ADJUSTED SPRINKLERS WITH A CONSTRUCTION CREATING THE GREATEST HYDRAULIC DEMAND USING 5" 150 LB. 2K HORIZONTAL SIDEWALL SPRINKLERS OR 4.9K PENDANT SPRINKLERS SPACED IN ACCORDANCE WITH THEIR LISTING.
SPRINKLERS MAY BE OMITTED IN THE FOLLOWING AREAS IN ACCORDANCE WITH:
 - A. BATHROOMS UNDER 55 SQ. FT.
 - B. CLOTHES, LINEN CLOSETS AND PANTRIES UNDER 12 SQ. FT.
 - C. ATTICS, CRAWL SPACES, FLOOR/CEILING SPACES AND ALL OTHER CONCEALED SPACES THAT ARE NOT USED OR INTENDED FOR LIVING PURPOSES OR STORAGE.
6. ALL SOFFITS THAT ARE 8" OR GREATER IN WIDTH SHALL BE PROTECTED BELOW BY PENDANT SPRINKLERS, WITH A SIDEWALL SPRINKLER INSTALLED ON THE FACE OF THE SOFFIT TO WITHIN 4"-6" OF THE CEILING. IF THE SOFFIT IS LESS THAN 8" IN WIDTH, THEN SPRINKLERS BENEATH CAN BE OMITTED.
7. SPRINKLERS ARE REQUIRED ON ALL PORCHES, OR BALCONIES, THAT ARE OPEN AND ATTACHED.
8. COMBUSTIBLE CONCEALED SPACES: SPRINKLERS ARE NOT REQUIRED IN ALL COMBUSTIBLE CONCEALED SPACES THAT ARE FILLED ENTIRELY WITH NON COMBUSTIBLE INSULATION. THE BUILDING OWNER IS TO BE RESPONSIBLE TO MEET THE REQUIREMENTS OF NFPA-13, SECTION 8.15.1.2.7: CONCEALED SPACES ENTIRELY FILLED WITH NONCOMBUSTIBLE INSULATION SHALL NOT REQUIRE SPRINKLER PROTECTION.
SECTION 8.15.1.2.7: CONCEALED SPACES WITHIN WOOD JOIST CONSTRUCTION AND COMPOSITE WOOD JOIST CONSTRUCTION HAVING NONCOMBUSTIBLE INSULATION FILLING THE SPACE FROM THE CEILING UP TO THE BOTTOM EDGE OF THE JOIST OF THE ROOF DECK, PROVIDED THAT IN COMPOSITE WOOD JOIST CONSTRUCTION THE JOIST CHANNELS ARE FIRE STOPPED INTO VOLUMES EACH NOT EXCEEDING 160 SQ. FT. TO THE FULL DEPTH OF THE JOIST WITH MATERIAL EQUIVALENT TO THE WEB CONSTRUCTION, SHALL NOT REQUIRE SPRINKLER PROTECTION.



2 UNIT A2 – FIRE PROTECTION PLAN
SCALE: 1/4"=1'-0" 18025-F-UNIT



1 UNIT A1 – FIRE PROTECTION PLAN
SCALE: 1/4"=1'-0" 18025-F-UNIT



3 UNIT A3 – FIRE PROTECTION PLAN
SCALE: 1/4"=1'-0" 18025-F-UNIT

Order Plans @

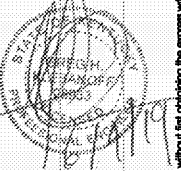
WWW.DIline.com

Common North, Prospect, KY



MiGre
Engineers LLC

780 FLORIDA CENTRAL PARKWAY
SUITE 224
LONGWOOD, FL 32750
PH: 407.336.7999
PROJECT #: 18025



Lyric at Norton Commons
Prospect, Kentucky

Bristol Development Group
381 Maloney Station Rd, Suite 204
Franklin, TN 37067

charlan • brock
associates

architects • planners
1770 fennell street
maitland florida 32751-7208
407.660.8900 • 407.875.9948
www.cbaarchitects.com

UNIT A1, A2 AND A3
FIRE PROTECTION
PLANS

date: 06-04-2019
job no: 3789.15
drawn by: GNIK
reviewed by: GNIK
file: 18025-F-UNIT
issue history:

F4.02