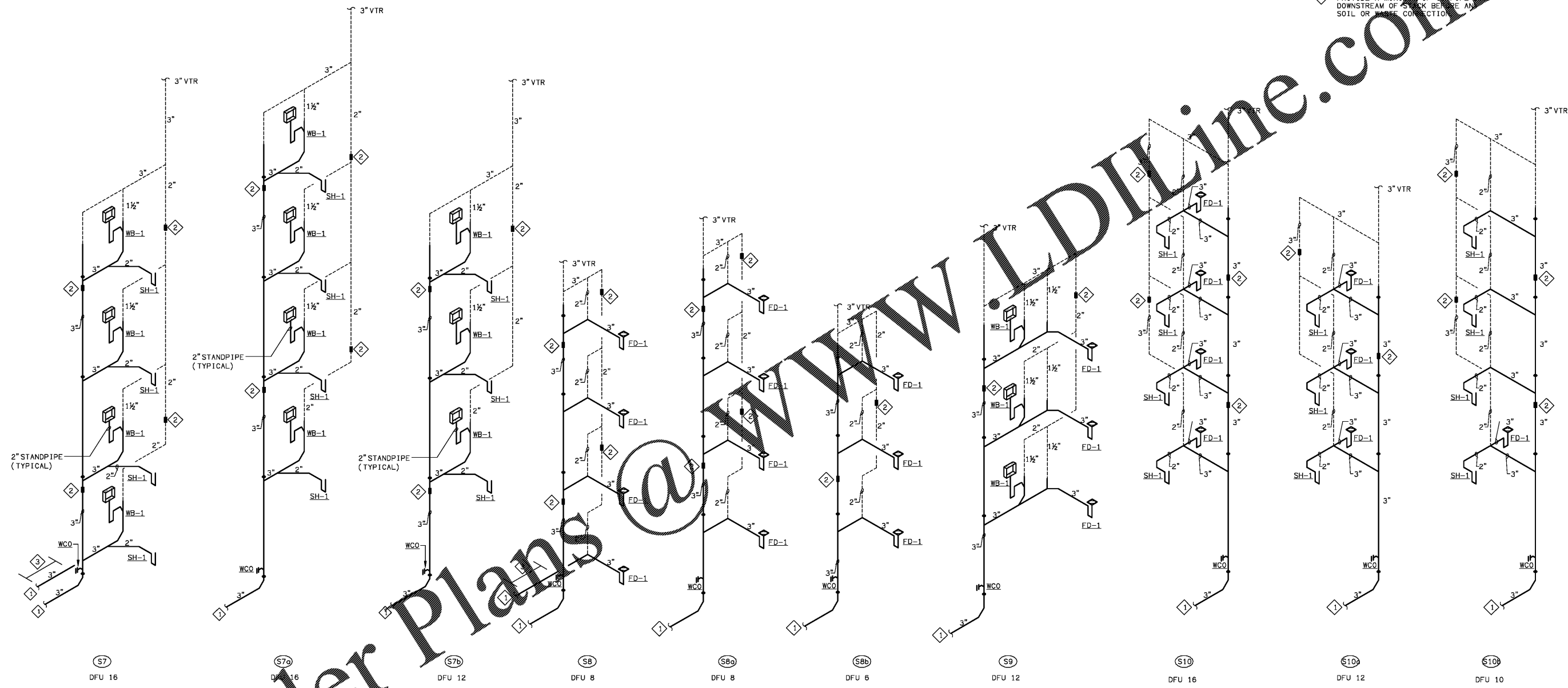


Water Engineers, LLC - 14000 N. W. 14th St., Suite 100, Ft. Lauderdale, FL 33309



SANITARY RISER NOTES

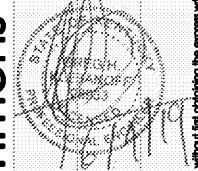
- 1 SANITARY WASTE PIPING BELOW SLAB. REFER TO PLUMBING BUILDING PLANS FOR CONTINUATION.
- 2 PROVIDE EXPANSIONS JOINTS EVERY 30 FEET EQUAL TO FERROCEMENT EXPANSION JOINT. PROVIDE ACCESS PANEL WHERE INSTALLED. IN LIEU OF MECHANICAL EXPANSION JOINTS, PROVIDE 90 DEGREE OFFSETS WITH 24".
- 3 PROVIDE A MINIMUM OF 12" PIPE BELOW DOWNSTREAM OF STACK BEFORE ANY SOIL OR WASTE CONNECTION.

Common North, Prospect, KY



MiGre
Engineers LLC

780 FLORIDA CENTRAL PARKWAY
SUITE 224
LONGWOOD, FL 32750
PH: 407.336.7999
PROJECT #: 18025



Lyric at Norton Commons
Prospect, Kentucky

Bristol Development Group
381 Mallory Station Rd, Suite 204
Franklin, TN 37067



architects • planners
1770 fennell street
maitland florida 32751-7208
407.660.8900 • 407.875.9948
www.cbaarchitects.com

PLUMBING
SCHEDULES
AND DETAILS

date: 06-04-2019
job no: 3789.15
drawn by: GNIK
reviewed by: GNIK
file: 18025-P-SCH205
issue history:

P6.05

This document is the property of Water Engineers, LLC. It is to be used only for the project and location specified. It is not to be reproduced, changed or copied in any form or manner whatsoever, nor are they to be assigned to any third party, without first obtaining the express written permission from Water Engineers, LLC. All dimensions and notes are in feet unless otherwise noted. © 2019 Water Engineers, LLC. AEC000796