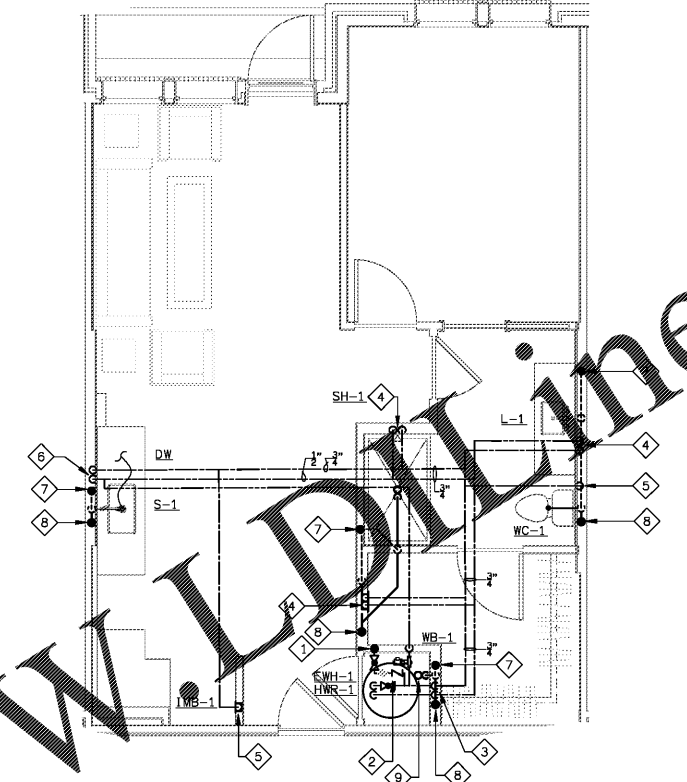
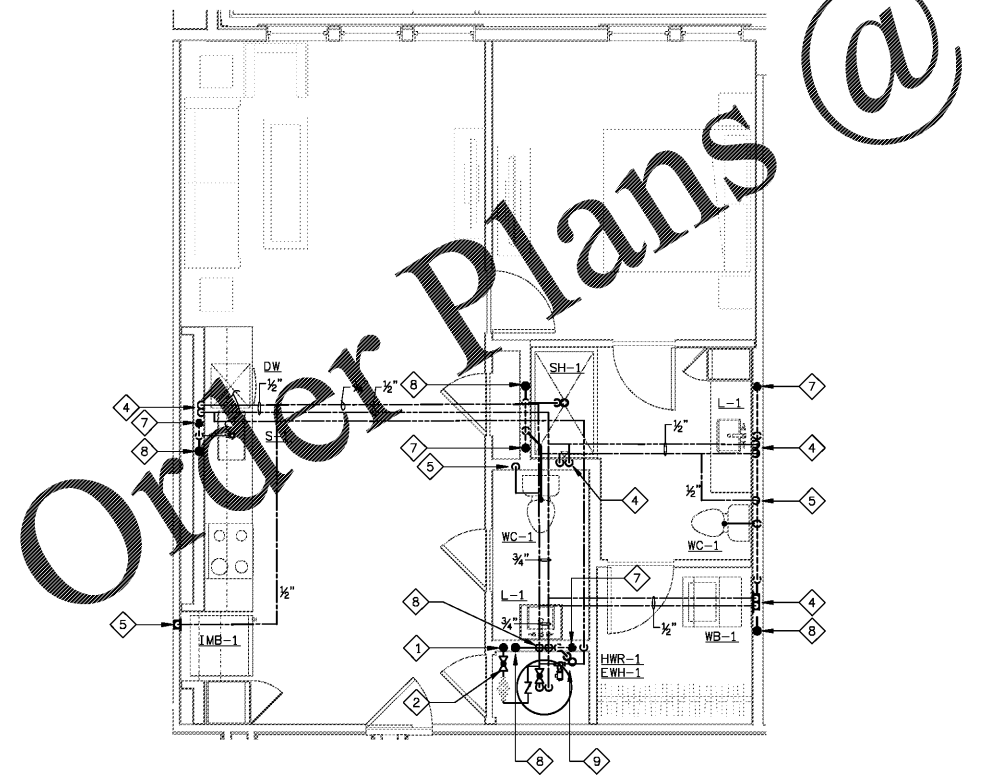


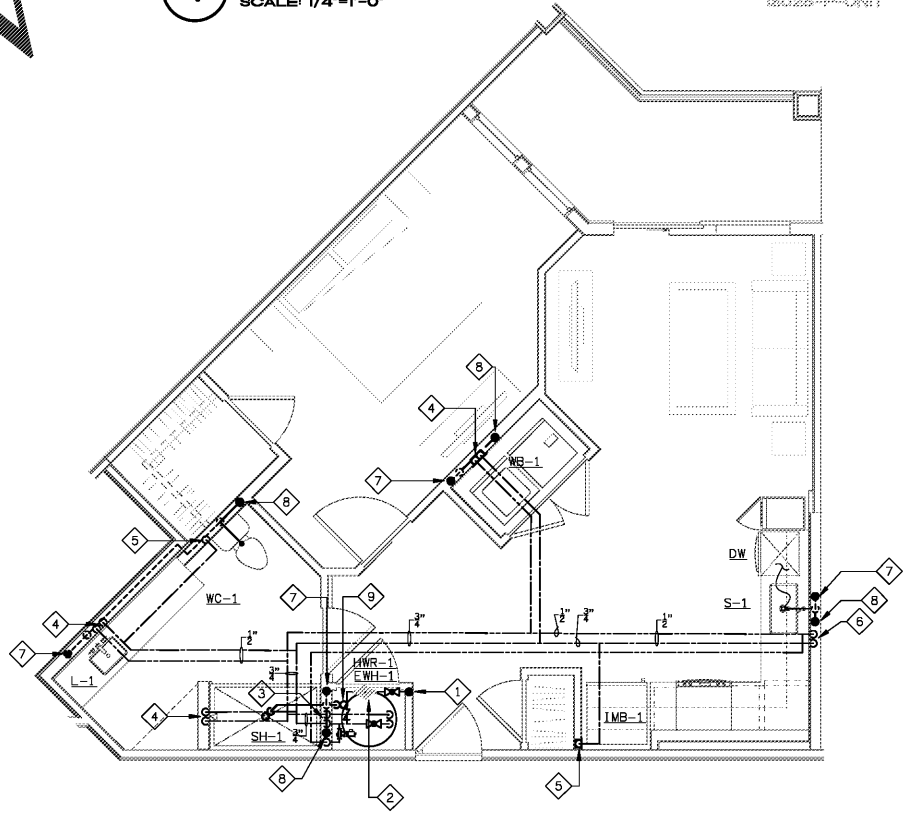
**2 UNIT A4 - PLUMBING PLAN**  
SCALE: 1/4"=1'-0" 180325-P4-UNIT



**1 UNIT A3.1 - PLUMBING PLAN**  
SCALE: 1/4"=1'-0" 180325-P4-UNIT



**4 UNIT A5 - PLUMBING PLAN**  
SCALE: 1/4"=1'-0" 180325-P4-UNIT



**3 UNIT A4-A - PLUMBING PLAN**  
SCALE: 1/4"=1'-0" 180325-P4-UNIT

**PLAN NOTES**

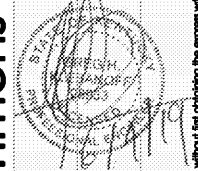
- 1 UNIT'S WATER SERVICE.
- 2 UNITS DOMESTIC WATER SHUT-OFF VALVE, REMOTE READ METER, AND CHECK-VALVE.
- 3 3/4" CW & HW DOWN TO AND UP FROM WATER HEATER.
- 4 1/2" HW & CW PIPING DOWN IN WALL CONNECT TO PLUMBING FIXTURE(S).
- 5 1/2" CW DOWN IN WALL CONNECT TO PLUMBING FIXTURE(S).
- 6 1/2" HW & CW PIPING DOWN IN WALL TO SINK AND DISHWASHER.
- 7 VENT RISER.
- 8 SANITARY RISER.
- 9 2" HUB DRAIN FOR SINK, PAN AND CONDENSATE. PROVIDE TRAP PRIMER.

Common North, Prospect, KY



**MiGre**  
Engineers LLC

780 FLORIDA CENTRAL PARKWAY  
SUITE 224  
LONGWOOD, FL 32750  
PH: 407.336.7999  
PROJECT #: 18025



Lyric at Norton Commons  
Prospect, Kentucky

Bristol Development Group  
381 Mallory Station Rd, Suite 204  
Franklin, TN 37067

**charlan • brock**  
associates

architects • planners  
1770 fennell street  
maitland florida 32751-7208  
407.660.8900 • 407.875.9948  
www.cbaarchitects.com

UNIT A3.1, A4, A4-A AND A5

PLUMBING  
PLANS

date: 06-04-2019  
job no: 3789.15  
drawn by: GNIK  
reviewed by: GNIK  
file: 18035-P-UNIT  
issue history:

**P4.03**

MiGre Engineers, LLC - 18035-P4-UNIT.dwg - PL, EIT - 06/04/2019 - 10:00 AM - 10/10/2019 - 10:00 AM

These plans, designs, and drawings are not to be reproduced, changed or copied in any form or manner whatsoever, nor are they to be assigned to any third party, without first obtaining the express written permission from C.B.A., Inc. within dimensions and have precedence over scale dimensions.