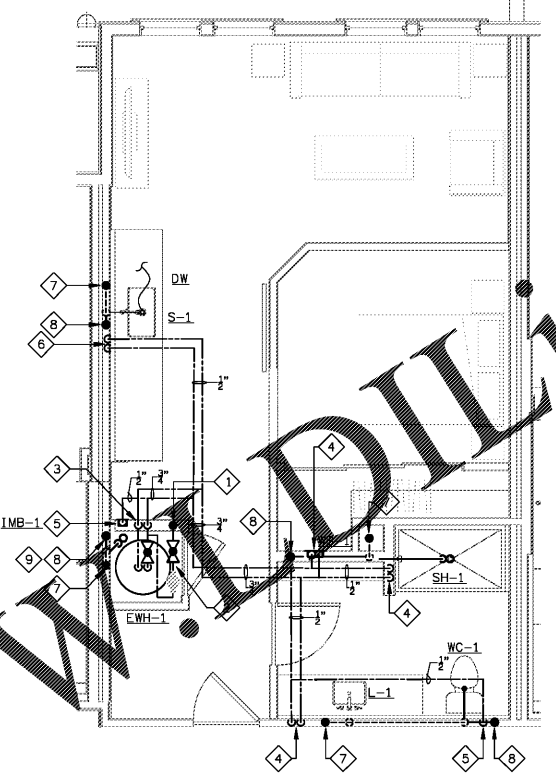
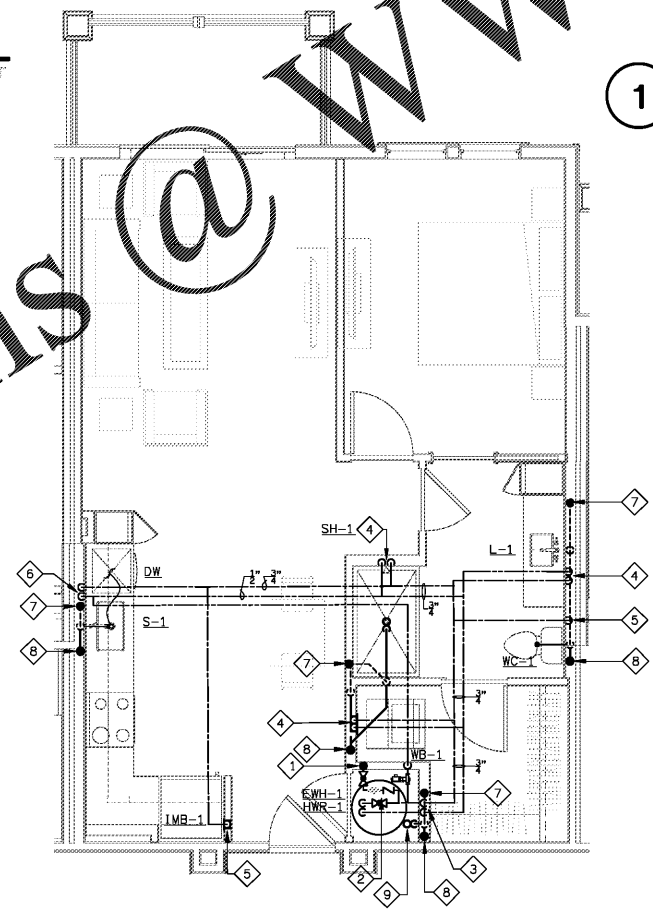


2 UNIT A2 - PLUMBING PLAN
SCALE: 1/4"=1'-0" 18025-P-UNIT



1 UNIT A1 - PLUMBING PLAN
SCALE: 1/4"=1'-0" 18025-P-UNIT



3 UNIT A3 - PLUMBING PLAN
SCALE: 1/4"=1'-0" 18025-P-UNIT

PLAN NOTES

- 1 UNIT'S WATER SERVICE.
- 2 UNITS DOMESTIC WATER SHUT-OFF VALVE, REMOTE READ METER, AND CHECK-VALVE.
- 3 3/4" CW & HW DOWN TO AND UP FROM WATER HEATER.
- 4 1/2" HW & CW PIPING DOWN IN WALL CONNECT TO PLUMBING FIXTURE(S).
- 5 1/2" CW DOWN IN WALL CONNECT TO PLUMBING FIXTURE(S).
- 6 1/2" HW & CW PIPING DOWN IN WALL TO SINK AND DISHWASHER.
- 7 VENT RISER.
- 8 SANITARY RISER.
- 9 2" HUB DRAIN FOR SLOPE PAN AND CONDENSATE. PROVIDE TRAP PRIMER.

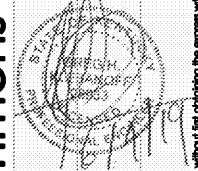
Order Plans @ WWW.DIline.com

Common North, Prospect, KY



MiGre
Engineers LLC

780 FLORIDA CENTRAL PARKWAY
SUITE 224
LONGWOOD, FL 32750
PH: 407.336.7999
PROJECT #: 18025



Lyric at Norton Commons
Prospect, Kentucky

Bristol Development Group
381 Mallory Station Rd, Suite 204
Franklin, TN 37067

charlan • brock
associates

architects • planners
1770 fennell street
maitland florida 32751-7208
407.660.8900 • 407.875.9948
www.cbaarchitects.com

UNIT A1, A2 AND A3
PLUMBING
PLANS

date: 06-04-2019
job no: 3789.15
drawn by: GNIK
reviewed by: GNIK
file: 18025-P-UNIT
issue history:

P4.02

The design, drawings, specifications, and other documents prepared by the engineer herein are for the use of the contractor only. The contractor shall be responsible for obtaining all necessary permits and for complying with all applicable laws, codes, and regulations. The engineer's liability is limited to the professional services rendered and does not extend to construction or other activities. The contractor shall indemnify and hold the engineer harmless from and against all claims, damages, and expenses, including reasonable attorneys' fees, arising out of or from the performance of the contract by the contractor or its subcontractors, regardless of whether or not such claims, damages, or expenses are caused in whole or in part by the negligence of the contractor or its subcontractors.