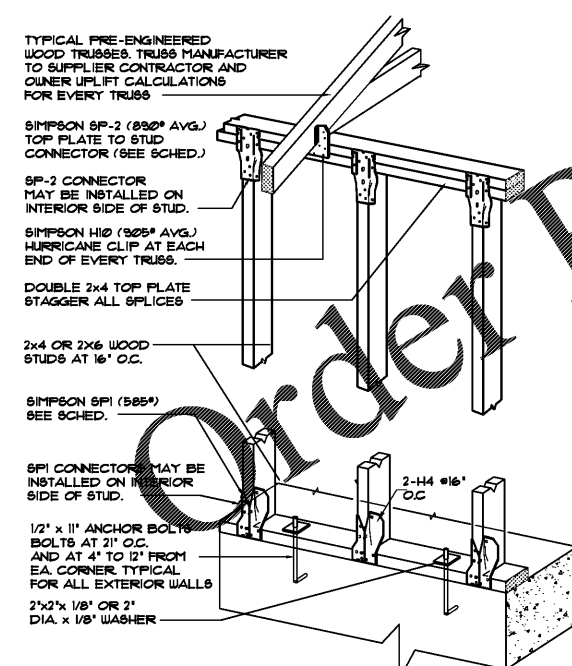
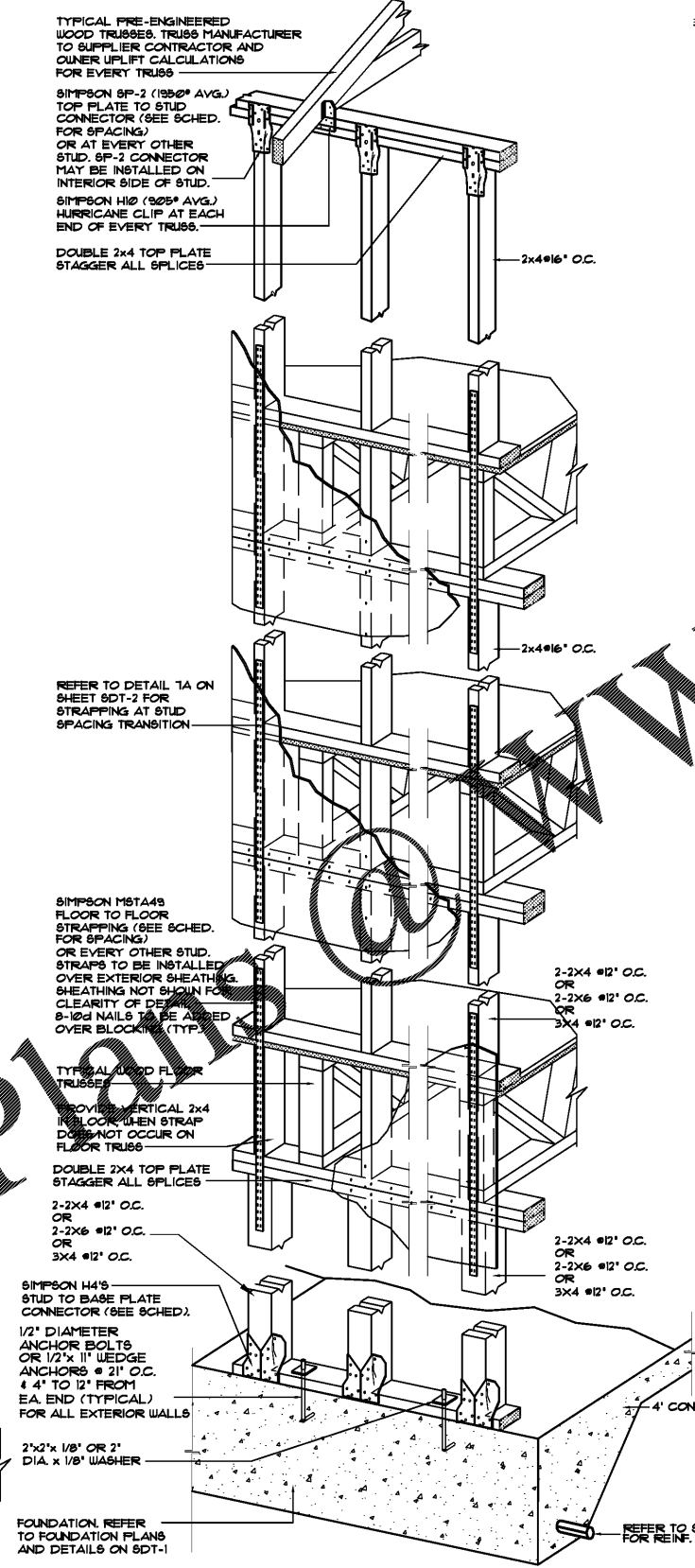


0:\USERS\CHARTAN\PROJECTS\NORTON COMMONS NORTH - APARTMENTS - STRUCTURAL - SHEETS\SDT-6.dwg
 Monday, June 03, 2014
 0:\USERS\CHARTAN\PROJECTS\NORTON COMMONS NORTH - APARTMENTS - STRUCTURAL - SHEETS\SDT-6.dwg

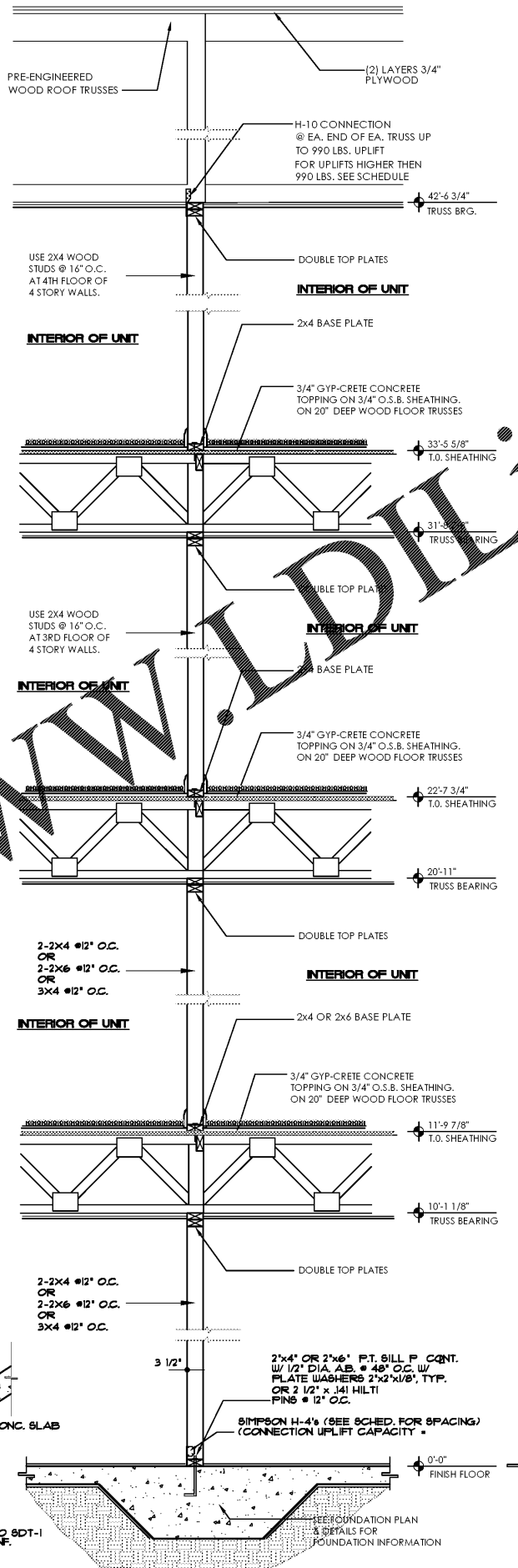
44 TYP. EXTERIOR LOAD PATH
ONE STORY CONDITION N.T.S.



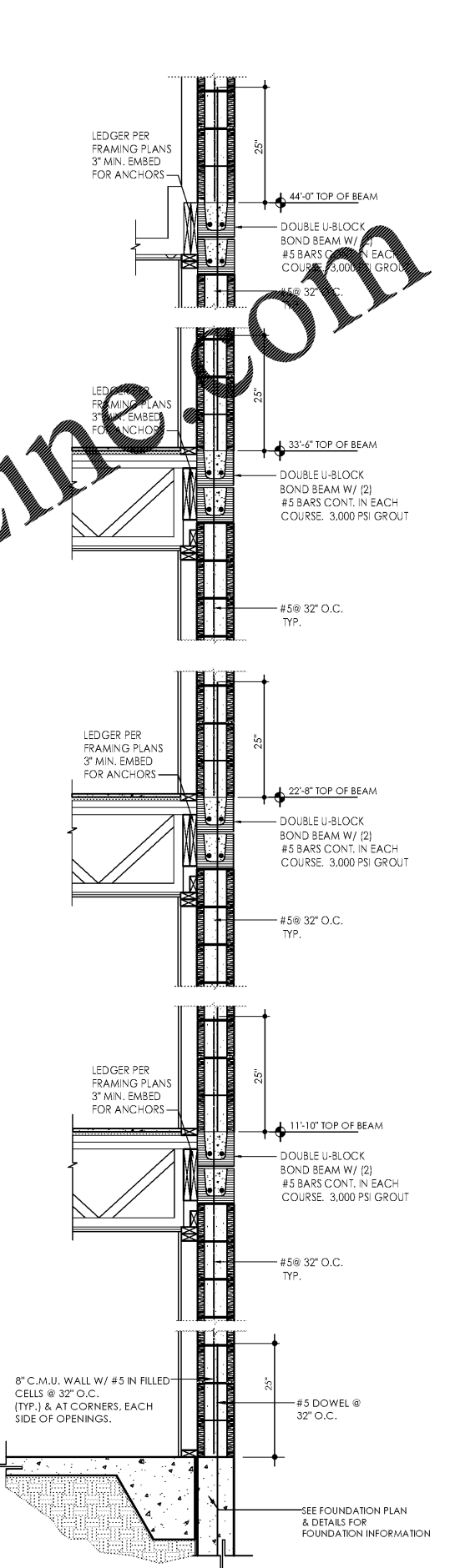
39 TYP. EXTERIOR LOAD PATH
FOUR STORY SCALE: 3/4"=1'-0"



40 TYPICAL INTERIOR BEARING WALL
FOUR STORY CONDITION SCALE: 3/4"=1'-0"



43 CMU SHAFT WALL
FOUR STORY CONDITION SCALE: 3/4"=1'-0"



Permit Set - 06/04/2019

date: 06-04-2019
 job no: 3789.15
 drawn by: CDG
 reviewed by: NHJ
 file: 3789SDT-6
 issue history:

WALL SECTIONS

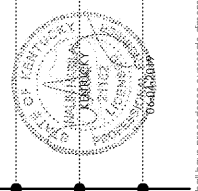
1770 fennell street
 maitland florida 32751-7208
 407.660.8900 f: 407.875.8948
 www.cbaarchitects.com



Prospect, Kentucky
 Bristol Development Group
 381 Mallory Station Rd. Suite 204
 Franklin, TN 37067

Norton Commons North - Apartments
NALIN H. JOSHI, P.E.
 4321 MAYWOOD DRIVE
 JACKSONVILLE, FLORIDA 32277
 NALIN.H.JOSHI@AOL.COM
 (904) 744-6133

Common North, Prospect, KY



charlan, brock & associates, inc. hereby reserves its common law copyright and other proprietary rights in these plans, ideas, and designs. these ideas, designs, and plans are not to be reproduced, changed or copied in any form or manner whatsoever, nor are they to be assigned to any third party, without first obtaining the express written permission from c.b.a., inc. written dimensions shall have precedence over scale dimensions.