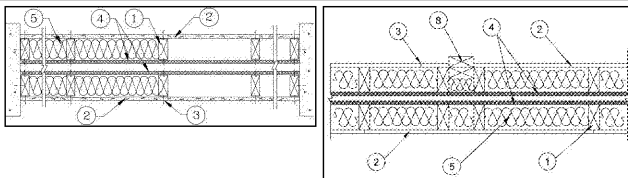


UL DESIGN U341

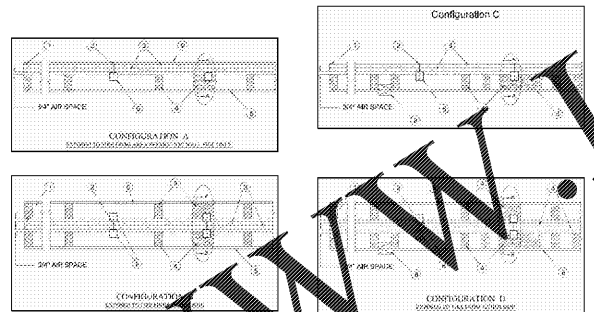


Design No. U341
April 15, 2019
Bearing Wall Rating - 1 Hr.
Finish Rating - Min 20 min.
This design was evaluated using a load design method other than the Limit States Design Method (e.g., Working Stress Design Method)...

UL DESIGN U341 (CONT.)

7. Wall and Partition Facings and Accessories* - (Optional, Not Shown) - Nominal 1/2 in. thick, 4 ft wide panels, for optional use as an additional layer on one or both sides of the wall...

UL DESIGN U347

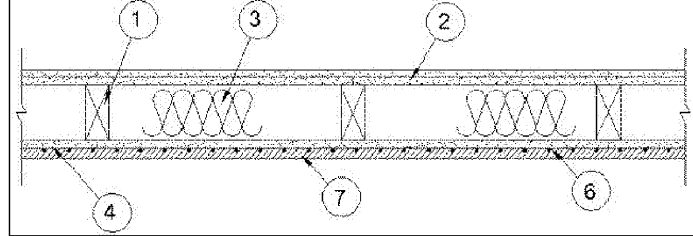


Design No. U347
January 11, 2019
Nonbearing Wall Rating - 2 Hr (See Items 4, 4A and 4B) (Separation Bearing Wall Rating - 1 Hr. (Protected Wall, See Items 4 and 4A)
Finish Rating - 120 min (See Item 4)
SIC Rating - 61, 69, 70 (See Items 7 - 7B)
Indicates such products shall bear the UL or cUL Certification Mark for jurisdictions employing the UL or cUL Certification (such as Canada), respectively.

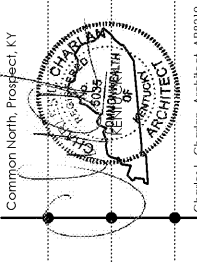
UL DESIGN U347 (CONT.)

6C. Clip placement for separation walls up to 66 ft high: Space clips as described in Item 6A for upper 24 ft, space clips as described in Item 6B for middle 30 ft. Remaining wall area below requires clips spaced a max of 39 in. OC vertically between wood or steel framing and "H" studs.

UL DESIGN U371



Design No. U371
November 19, 2018
Bearing Wall Rating - 2 Hr.
Finish Rating - 41 Min.
This design was evaluated using a load design method other than the Limit States Design Method (e.g., Working Stress Design Method)...



Lyric at Norton Commons
Prospect, Kentucky
Bristol Development Group
381 Mabury Station Rd, Suite 204
Franklin, TN 37067



1770 fennell street
maifland florida 32751-7208
407 660 8900
www.cbarchitects.com

FIRE RATED ASSEMBLIES

VERTICAL RATINGS

date: 06-04-2019
job no: 3789.15
drawn by: JHB
reviewed by: CBA
file: 3789-A8.13
issue history:

A8.13