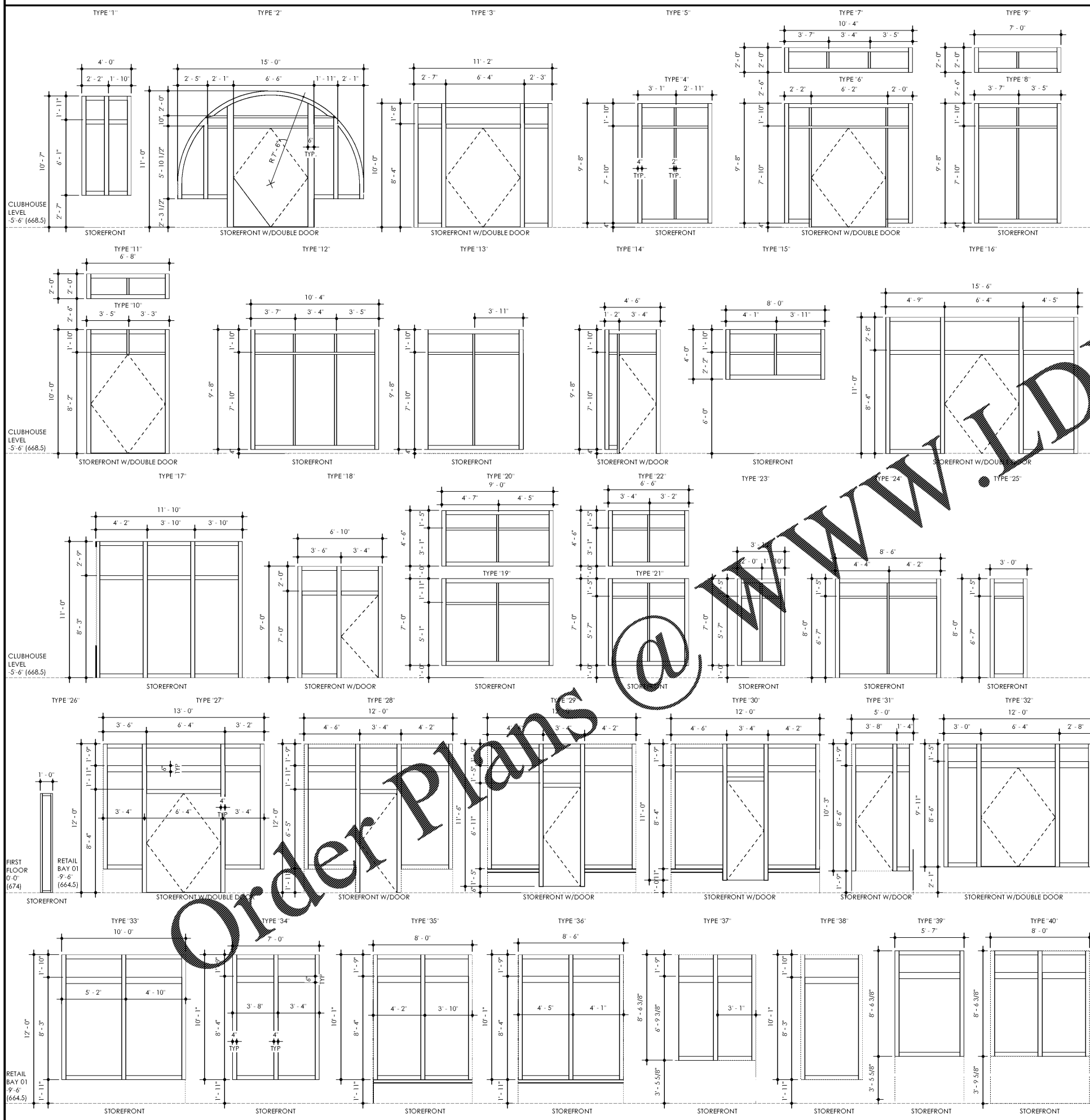


STOREFRONT WINDOW TYPES



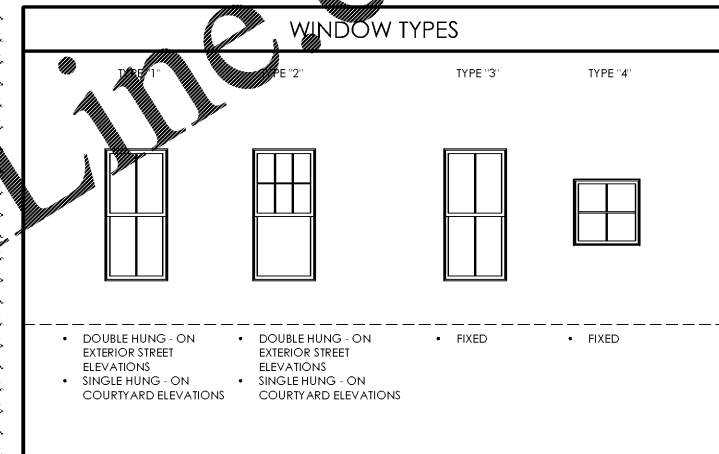
GENERAL WINDOW NOTES

1. ALL WINDOW ATTACHMENT REQUIREMENTS TO MEET OR EXCEED CODE REQUIREMENTS FOR DESIGN PRESSURES. REFER TO MANUFACTURER'S SPECIFICATIONS.
2. MINIMUM ENERGY RATING: SHGC: 0.35 U-FACTOR: 0.35
3. EXTERIOR GLAZING IS REQUIRED TO BE CLEAR GLASS
4. AT LEAST 10% OF WINDOWS SUBJECT TO FIELD WATER TESTING
5. OPERABLE WINDOWS TO INCLUDE WINDOW OPENING CONTROL DEVICES AS REQUIRED BY 2015 IBC 1015.8 AND 1015.8.1
6. REFER TO UNIT PLANS FOR LOCATIONS OF REQUIRED TEMPERED GLASS.

7/3/19

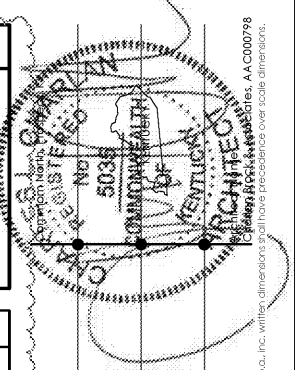
WINDOW SCHEDULE

MARK	WIDTH	HEIGHT	WIND. TYPE	WIND. FRAME MTL.	REMARKS (NOTES)
A	2'-10"	6'-0"	1	VINYL	
B	2'-4"	6'-0"	1	VINYL	
C	2'-10"	6'-0"	2	VINYL	
D	2'-10"	5'-0"	1	VINYL	
E	2'-10"	6'-0"	3	VINYL	
F	3'-0"	3'-0"	4	VINYL	



STOREFRONT WINDOW SCHEDULE

MARK	WIDTH	HEIGHT	WIND. TYPE	WIND. FRAME MTL.	FIRE RATING	REMARKS (NOTES)
AA	4'-0"	8'-0"	1	ALUM		
AB	15'-0"	9'-0"	2	ALUM		
AC	11'-2"	10'-0"	3	ALUM		
AD	6'-0"	10'-0"	4	ALUM		
AE	10'-4"	10'-0"	6	ALUM		
AG	10'-4"	2'-0"	7	ALUM		
AH	7'-0"	9'-8"	8	ALUM		
AI	7'-0"	2'-0"	9	ALUM		
AJ	6'-8"	10'-0"	10	ALUM		
AK	6'-8"	2'-0"	11	ALUM		
AL	10'-4"	9'-8"	12	ALUM		
AM	8'-0"	9'-8"	13	ALUM		
AN	4'-6"	10'-0"	14	ALUM		
AO	8'-0"	4'-0"	15	ALUM		
AP	15'-8"	11'-0"	16	ALUM		
AQ	11'-10"	11'-0"	17	ALUM		
AR	6'-10"	9'-0"	18	ALUM		
AS	9'-0"	7'-0"	19	ALUM		
AT	9'-0"	4'-6"	20	ALUM		
AU	6'-6"	7'-0"	21	ALUM		
AV	6'-6"	4'-6"	22	ALUM		
AW	3'-10"	7'-0"	23	ALUM		
AX	8'-6"	8'-0"	24	ALUM		
AY	3'-0"	8'-0"	25	ALUM		
AZ	1'-0"	8'-0"	26	ALUM		
BA	13'-0"	12'-0"	27	ALUM		
BB	7'-0"	10'-1"	34	ALUM		
BC	10'-0"	10'-1"	33	ALUM		
BD	5'-0"	10'-1"	38	ALUM		
BE	12'-0"	12'-0"	28	ALUM		
BF	4'-6"	10'-1"	38	ALUM		
BG	8'-0"	10'-1"	35	ALUM		
BH	12'-0"	11'-6"	29	ALUM		
BI	8'-6"	10'-1"	37	ALUM		
BJ	12'-0"	11'-0"	30	ALUM		
BK	5'-0"	10'-3"	31	ALUM		
BL	5'-7"	8'-6"	11/32	39	ALUM	
BM	8'-6"	11/32	37	ALUM		
BN	12'-0"	9'-11"	32	ALUM		
BO	8'-0"	8'-6"	11/32	40	ALUM	



Lyric at Norton Commons
Prospect, Kentucky

Bristol Development Group
381 Mallory Station Rd, Suite 204
Franklin, TN 37067

charlan • brock associates
architects • planners

1770 fennell street
maitland florida 32751-7208
407.660.8900 f:407.875.9948
www.cbarchitects.com

WINDOW SCHEDULES

date: 06/04/2019
job no: 3789.15
drawn by: EGR JAC, TQT
reviewed by: CBA
issue history:
Δ Date 1 07/03/19

A7.02

7/3/2019 10:54:24 AM C:\CELL\Custom\Project\3789.15\CD\NOTES\CD\MARKINGS_R186.rvt

Charlan Brock Associates, Inc. hereby represents its common law copyright and other proprietary rights in these plans, ideas, and designs. These ideas, designs, and plans are not to be reproduced, changed or copied in any form or manner whatsoever, nor are they to be assigned to any third party, without first obtaining the express written permission from C.B.A., Inc. All window dimensions shall have precedence over scale dimensions. AA CDD0798